

The background features a large, light blue watermark of the letters "USDA" in a serif font, spanning across the top half of the slide.

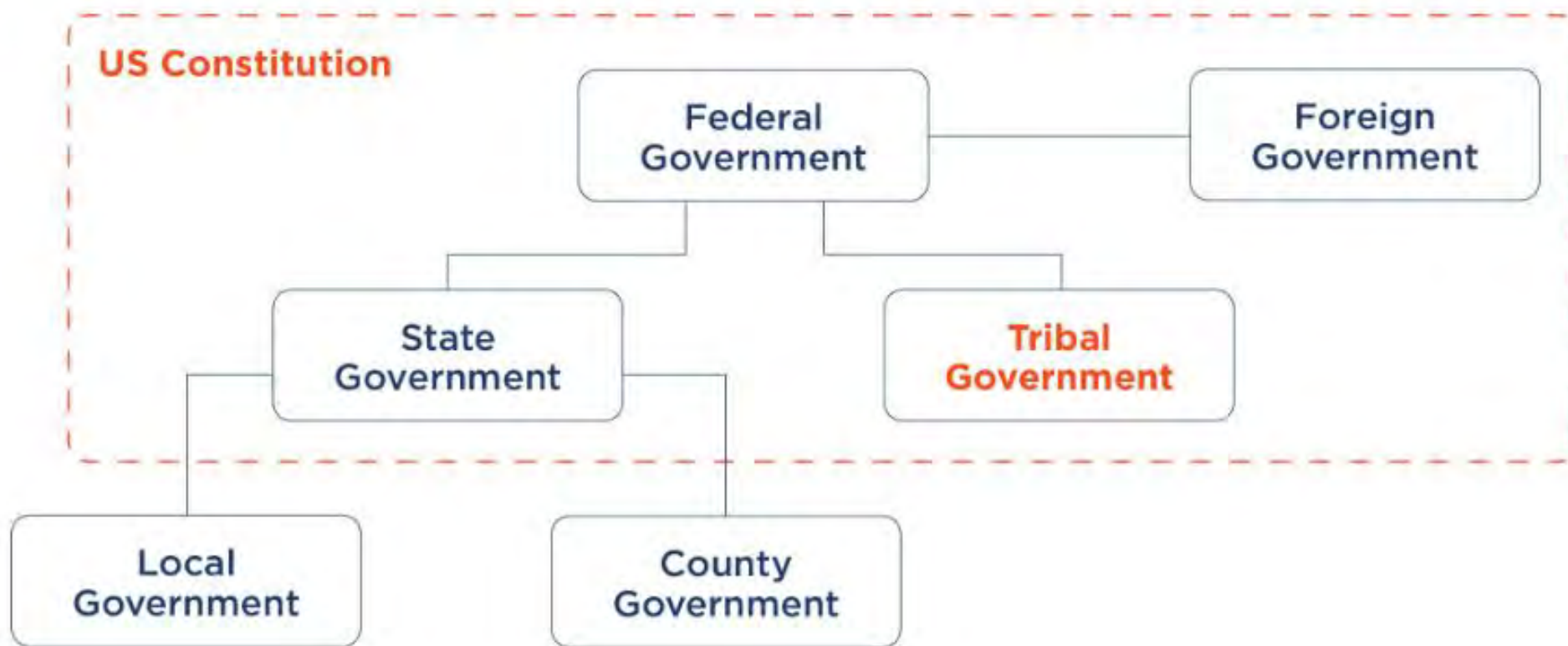
# Emergency Support Function 11 Agriculture and Natural Resources Tribal Brief

***YOUR NAME: Everet Sterling***

**USDA APHIS ESF 11 Coordinator for FEMA Region 10**

# Tribal Nations are Recognized Sovereigns

The US Constitution explicitly recognizes four sovereigns:



**Tribal Coordination and  
Collaboration**

**Federal: ESF #11 collaborates with federal agencies such as the Federal Emergency Management Agency (FEMA), the Department of the Interior (DOI), and others to provide comprehensive support.**

**Tribal: Close coordination with tribal governments is essential. ESF #11 works directly with tribal emergency management agencies and relevant tribal authorities to tailor response efforts to the specific needs and priorities of each tribe.**

**State and Local: Partnerships with state and local governments ensure that response efforts are cohesive and that tribal needs are integrated into broader regional emergency management strategies.**

**Non-Governmental Organizations (NGOs): Collaboration with NGOs helps leverage additional resources and expertise, particularly in areas like food distribution and animal welfare.**

# Emergency Support (ESF) #11 Agricultural and Natural Resources

- ESF #11 organizes and coordinates Federal support for the protection of the Nation's agricultural and natural and cultural resources during national emergencies. ESF #11 works during actual and potential incidents to:
  - Provide nutrition assistance
  - Respond to animal and agricultural health issues
  - Provide technical expertise, coordination and support of animal and agricultural emergency management
  - Ensure the safety and defense of the Nation's supply of meat, poultry, and processed egg products
  - Ensure the protection of natural and cultural resources and historic properties.



National Response

USD

USDA has aligned ESF#11 Coordinators to match FEMA's Regional structure to provide greatest disaster interoperability

The screenshot shows the FEMA website page titled "Regions, States and Territories". It features a map of the United States with 10 regions numbered 1 through 10. Below the map is a table with the following data:

Region	States/Territory
Region 1	Connecticut   Maine   Massachusetts   New Hampshire   Rhode Island   Vermont
Region 2	New Jersey   New York   Puerto Rico   Virgin Islands
Region 3	Delaware   Maryland   Pennsylvania   Virginia   District of Columbia   West Virginia
Region 4	Alabama   Florida   Georgia   Kentucky   Mississippi   North Carolina   South Carolina   Tennessee
Region 5	Illinois   Indiana   Michigan   Minnesota   Ohio   Wisconsin
Region 6	Arkansas   Louisiana   New Mexico   Oklahoma   Texas
Region 7	Iowa   Kansas   Missouri   Nebraska
Region 8	Colorado   Montana   North Dakota   South Dakota   Utah   Wyoming
Region 9	Arizona   California   Hawaii   Nevada   Guam   American Samoa   Commonwealth of Northern Mariana Islands   Republic of Marshall Islands   Federated States of Micronesia
Region 10	Alaska   Idaho   Oregon   Washington

<https://www.fema.gov/about/organization/regions>



The screenshot shows the USDA website page titled "ESF #11 Coordinator Contacts". It lists the following regions and their corresponding states/territories:

- National Capital Region
- FEMA Region 1 - Connecticut, Maine, Massachusetts, New Hampshire, Rhode Island, Vermont
- FEMA Region 2 - New Jersey, New York, Puerto Rico, U.S. Virgin Islands
- FEMA Region 3 - Delaware, District of Columbia, Maryland, Pennsylvania, Virginia, West Virginia
- FEMA Region 4 - Alabama, Florida, Georgia, Kentucky, Mississippi, North Carolina, South Carolina, Tennessee
- FEMA Region 5 - Illinois, Indiana, Michigan, Minnesota, Ohio, Wisconsin
- FEMA Region 6 - Arkansas, Louisiana, New Mexico, Oklahoma, Texas
- FEMA Region 7 - Iowa, Kansas, Missouri, Nebraska
- FEMA Region 8 - Colorado, Montana, North Dakota, South Dakota, Utah, Wyoming
- FEMA Region 9 - American Samoa, Arizona, California, CNMI (Mariana Islands), Guam, Hawaii, Nevada
- FEMA Region 10 - Alaska, Idaho, Oregon, Washington

<https://www.aphis.usda.gov/aphis/ourfocus/emergencyresponse/esf11-contacts/esf11-contacts>

# ESF #11 Coordinator Role

- Serves as the single point of contact and liaison for ESF #11 within the respective region, to:
- FEMA
- the ESF #11 Partner Agency Programs (Animal and Plant Health Inspection Service (APHIS),
- Food and Nutrition Service (FNS),
- Food Safety and Inspection Service (FSIS), and the
- Department of the Interior (DOI);
- Other Federal Agencies (OFA);
- the States, Tribes, Territories, Non-Governmental Organizations, and key stakeholders.

**\*\*\*We Are Not the Subject Matter Experts\*\*\***



ESF #11 Coordinator  
Responsibilities



**Preparedness**

Assist and support all regional stakeholders with emergency preparedness efforts including: the review and development of plans and procedures; conduct exercise design, facilitation and evaluation; and develop and conduct trainings.

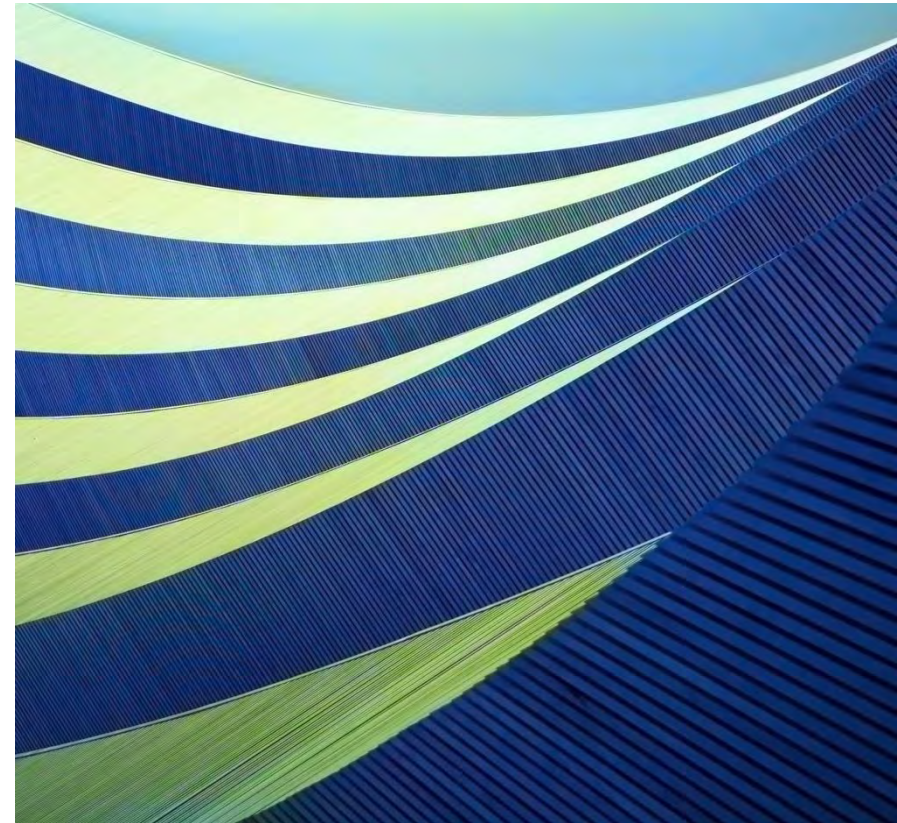


### Preparedness (cont.)



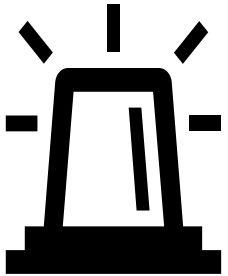
### Planning Support

- Review and comment on Federal, State, Local All-Hazards Plans
- Make sure the documents reflect the correct ESF #11 information
- Verify any inconsistencies with ESF#11 Partner Agency Points of Contact



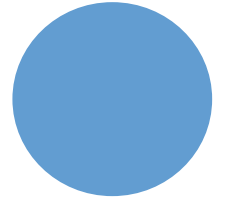


## Preparedness (Cont.)



### **FEMA Radiological Preparedness (REP)**

- Review Offsite Response Organization's (ORO) Plans
- Evaluate ORO exercise play for assigned REP Demonstration Criterion
- Provide structured, detailed write-ups of observations
- Provide a briefing to ORO exercise team on initial results at ENDEX
- Ingestion Pathway Exercises for our Agricultural and Animal-related backgrounds



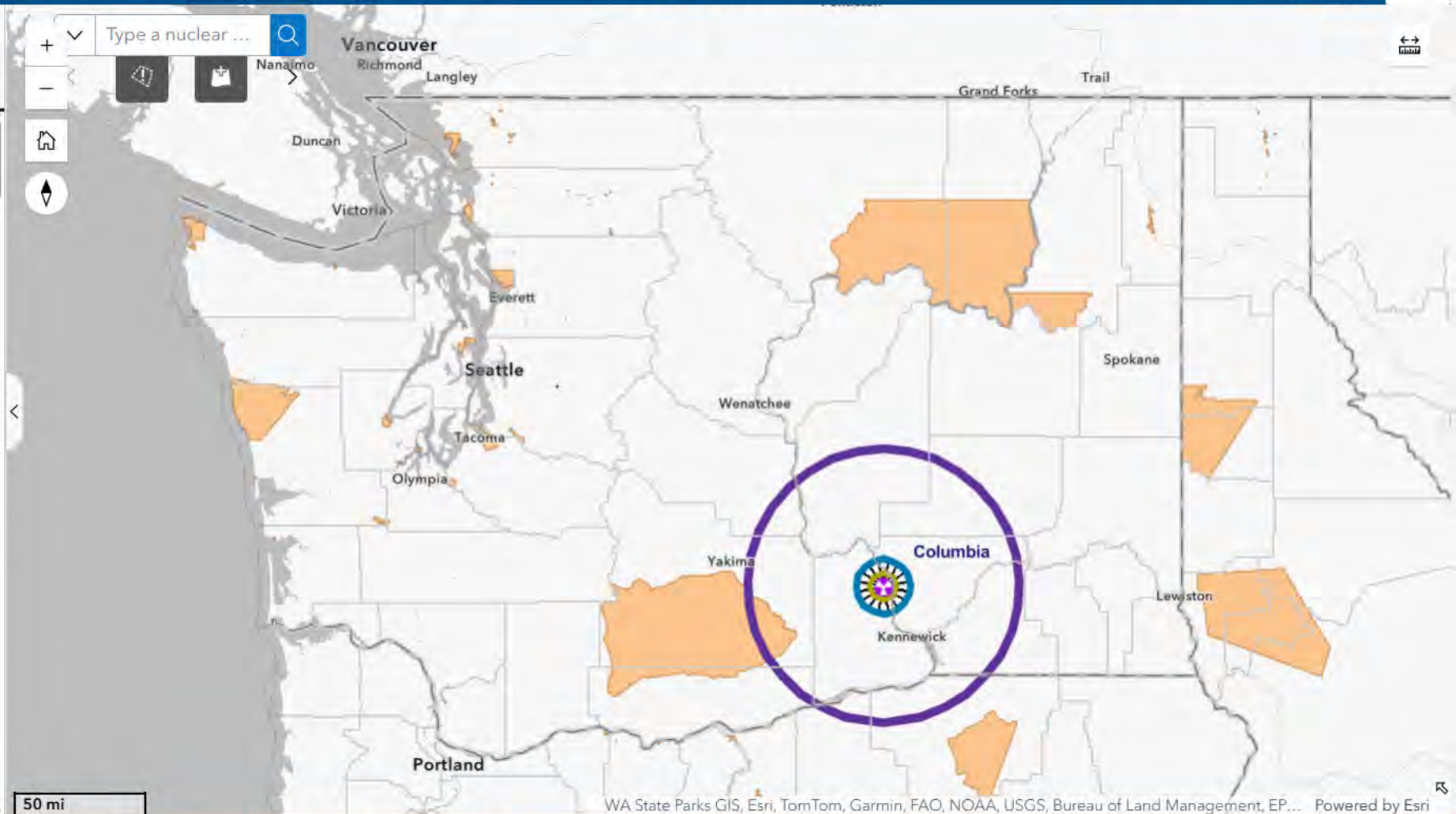
# FEMA Radiological Emergency Preparedness (REP) Public Information Map, Version 2.0

Thu, Apr 16, 2026 10:42:18 EDT  
9:42 am CDT  
7:42 am MST  
7:42 am PDT

### Layer List

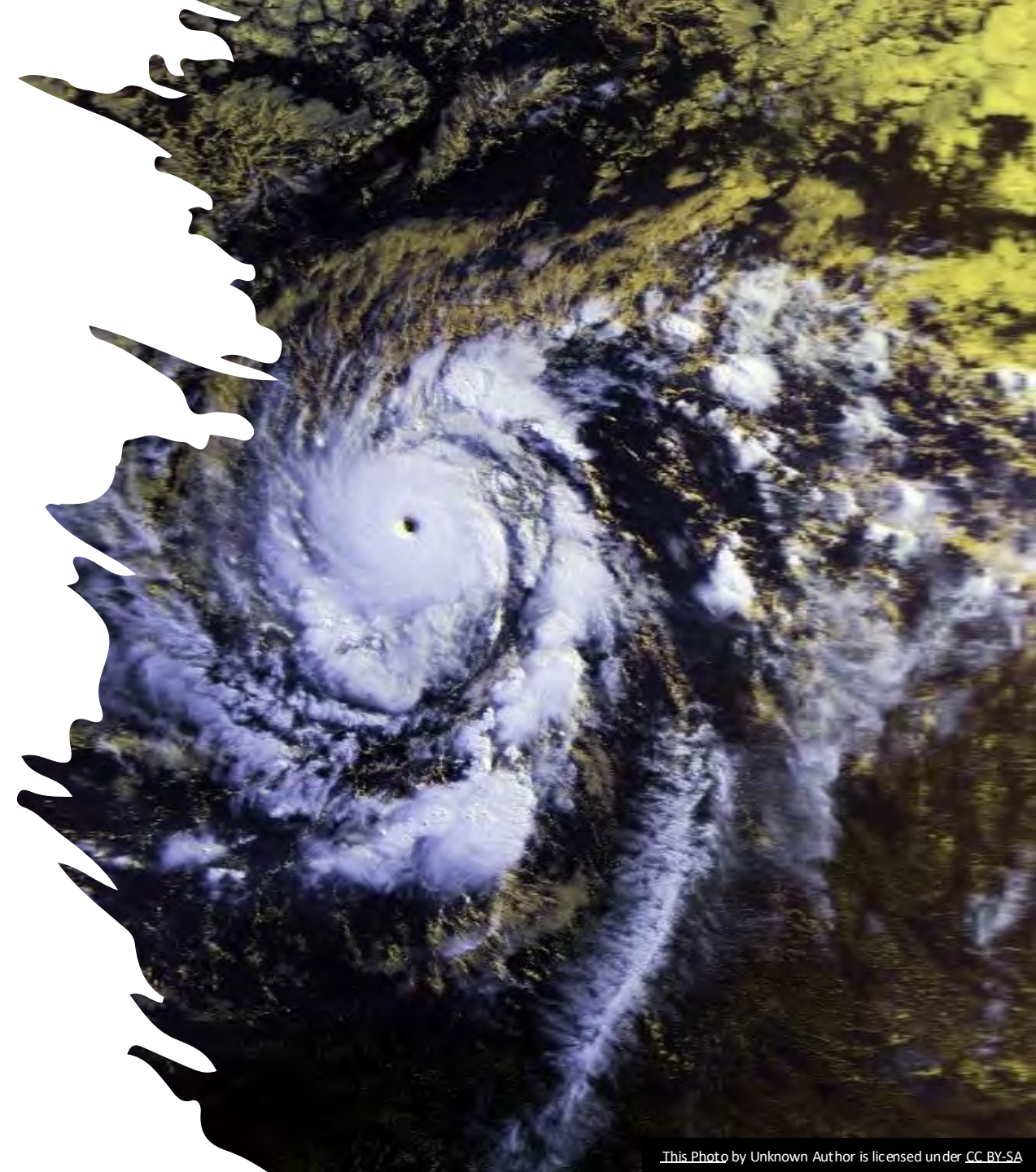
To show/hide layers, check or uncheck the box next to the layer name.

Layers	Search
<input type="checkbox"/> Nuclear Plant Power Reactor Power Status	...
<input checked="" type="checkbox"/> Operating Nuclear Power Plant Sites by Output (MWe)	...
<input type="checkbox"/> IAEA_World_Nuclear_Reactors	...
<input type="checkbox"/> States	...
<input checked="" type="checkbox"/> Counties	...
<input type="checkbox"/> County Subdivisions	...
<input type="checkbox"/> Active CSEPP Locations	...
<input type="checkbox"/> Canadian Nuclear Power Facility	...
<input type="checkbox"/> EPA Radiation Air Monitors (Gamma)	...
<input type="checkbox"/> Police Stations	...
<input type="checkbox"/> Prisons Correctional Facilities	...

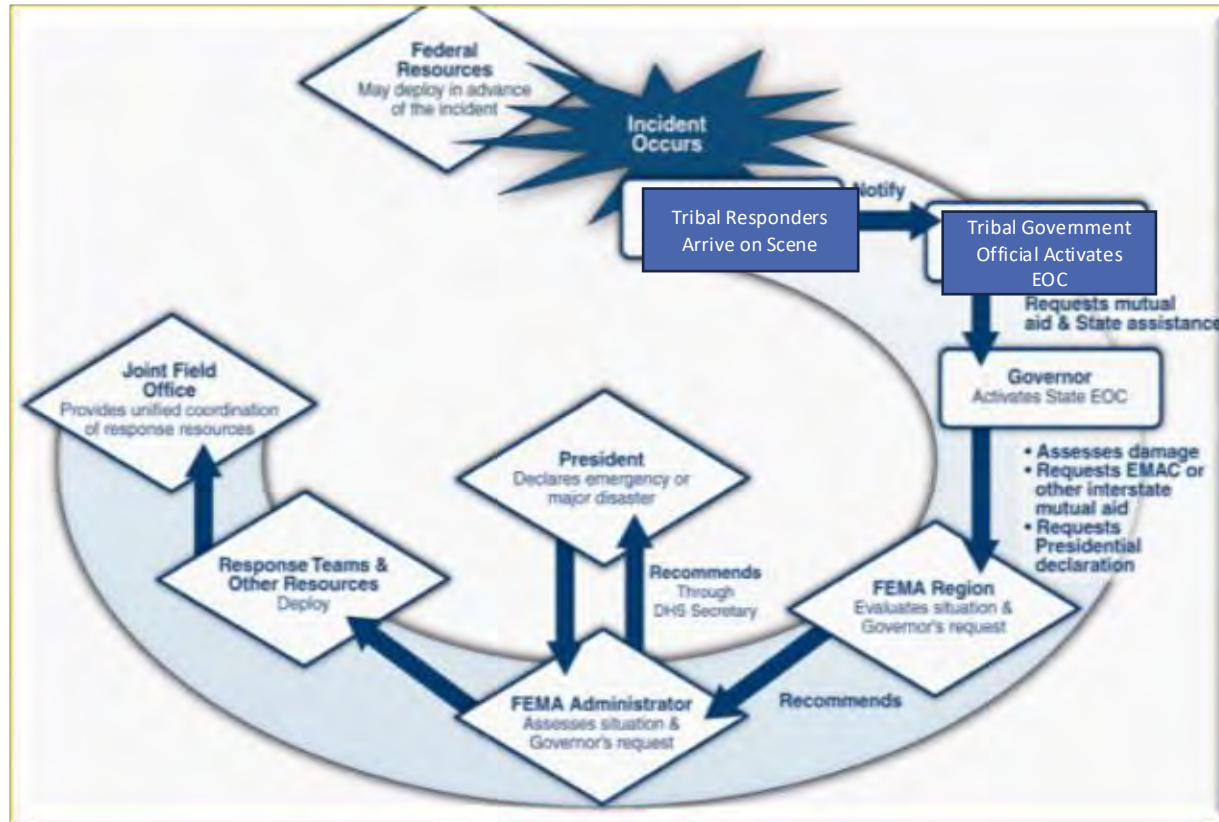


## Preparedness (Cont.)

- All ESF 11 Coordinators are engaged and collaborate with external stakeholder emergency responders/agencies throughout the region and national level.
- Some examples of the various regional/national level WG include VSNTPEP(National), RISC, ESFWG, Federal Executive Board, DCE (Defense Coordinating Element), Radiological Assistance Committee (RAC), RRT, and various other work groups.
- Provide USDA SME at JFO's, RRCC and NRCC during trainings, exercises, alerts, and activations.
- Work with State, Local and Tribal governments on Continuity of Operations Planning, Exercises, and ICS Training at the 300, 400, 402 and G 191 level. Your ESF 11 Coordinator can arrange for the training through the Emergency Management Branch.



# National Disaster Response Cycle Pre-2013



On January 29, 2013, President Obama signed the Sandy Recovery Improvement Act of 2013, which amended the Stafford Act. The Act included a provision to provide federally recognized Indian tribal governments the option to request a Presidential emergency or major disaster declaration independent of a state.

In 2014, FEMA sought input from tribal governments on the first draft of the pilot guidance. Through a series of extensive in-person meetings with tribal governments, FEMA received more than 1,000 comments on the pilot guidance from 220 tribal governments.

Tribal governments may still choose to seek assistance, as they have historically, under a state declaration request.



**FEMA**

## Fact Sheet

### TRIBAL DECLARATIONS PILOT GUIDANCE

#### **Background:**

The Sandy Recovery Improvement Act (SRIA) in 2013 included a provision amending the Stafford Act to provide federally recognized Indian tribal governments (tribal governments) the option to seek Stafford Act assistance independent of a state if they chose to do so. FEMA developed the Tribal Declarations Pilot Guidance after several rounds of consultation with tribal governments over the course of more than three years. SRIA amended the Stafford Act to allow tribal governments the **choice** to either request an emergency/major disaster declaration independently of a state **or** seek disaster assistance through a state declaration.

- As amended, the Stafford Act now better reflects the sovereignty of tribal governments and acknowledges FEMA's government-to-government relationship with tribal governments.
- The change also promotes tribal self-determination by allowing tribal governments to determine for themselves if they want to seek Stafford Act assistance either independently of a state or through a state declaration.

#### **Types of Stafford Act Declarations:**

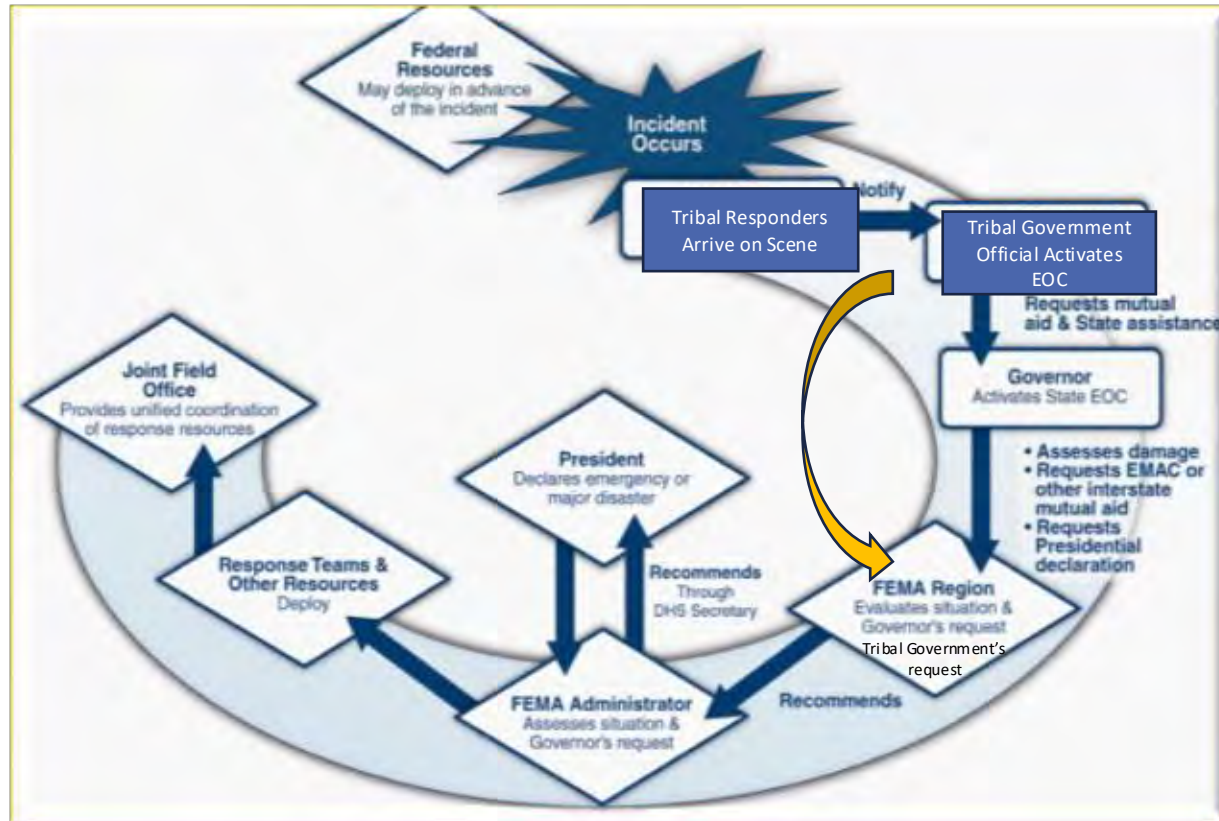
**Emergency Declarations:** The Tribal Chief Executive or Governor may request an emergency declaration through the appropriate Regional Administrator. The President can declare an emergency for any occasion or instance when the President determines federal assistance is needed. Emergency declarations may supplement tribal government efforts in providing emergency services, such as the protection of lives, property, public health, and safety, or to lessen or avert the threat of a catastrophe in any part of the United States.

**Requirements<sup>1</sup>:** The Chief Executive of the affected tribal government or Governor of a state may submit a request to the President, through the appropriate Regional Administrator, within 30 days of the occurrence of the incident. The request must be based upon a finding that the situation is beyond the capability of the tribal government and that supplemental federal emergency assistance is necessary to save lives and protect property, public health and safety, or to lessen or avert the threat of a disaster. In addition, the request must include:

- Confirmation that the Tribal Chief Executive or Governor has taken appropriate action under state or tribal law and directed the execution of the state or tribal emergency plan;
- A description of the state and local or tribal government efforts and resources utilized to alleviate the emergency;
- A description of other federal agency efforts and resources utilized in response to the emergency; and

<sup>1</sup> 44 C.F.R. §206.35

# National Disaster Response Cycle Post-2013





# Stafford Act Authority

Sec. 502. Federal  
Emergency  
Assistance (42  
U.S.C. 5192)

In any emergency,  
FEMA as designated  
by the President,  
may

**Direct** any Federal agency, with or without reimbursement, to utilize its authorities and the resources granted to it under Federal law (including personnel, equipment, supplies, facilities, and managerial, technical and advisory services) in support of State and local emergency assistance efforts to save lives, protect property and public health and safety, and lessen or avert the threat of a catastrophe, including precautionary evacuations

## ESF 11

The USDA Emergency Support Function (ESF) #11 provides federal assistance to tribal nations in managing and recovering from incidents that impact food and agriculture, natural and cultural resources, and the safety and well-being of animals. This brief outlines the roles and responsibilities of various USDA agencies involved with ESF #11, specifically focusing on their support to tribal nations.



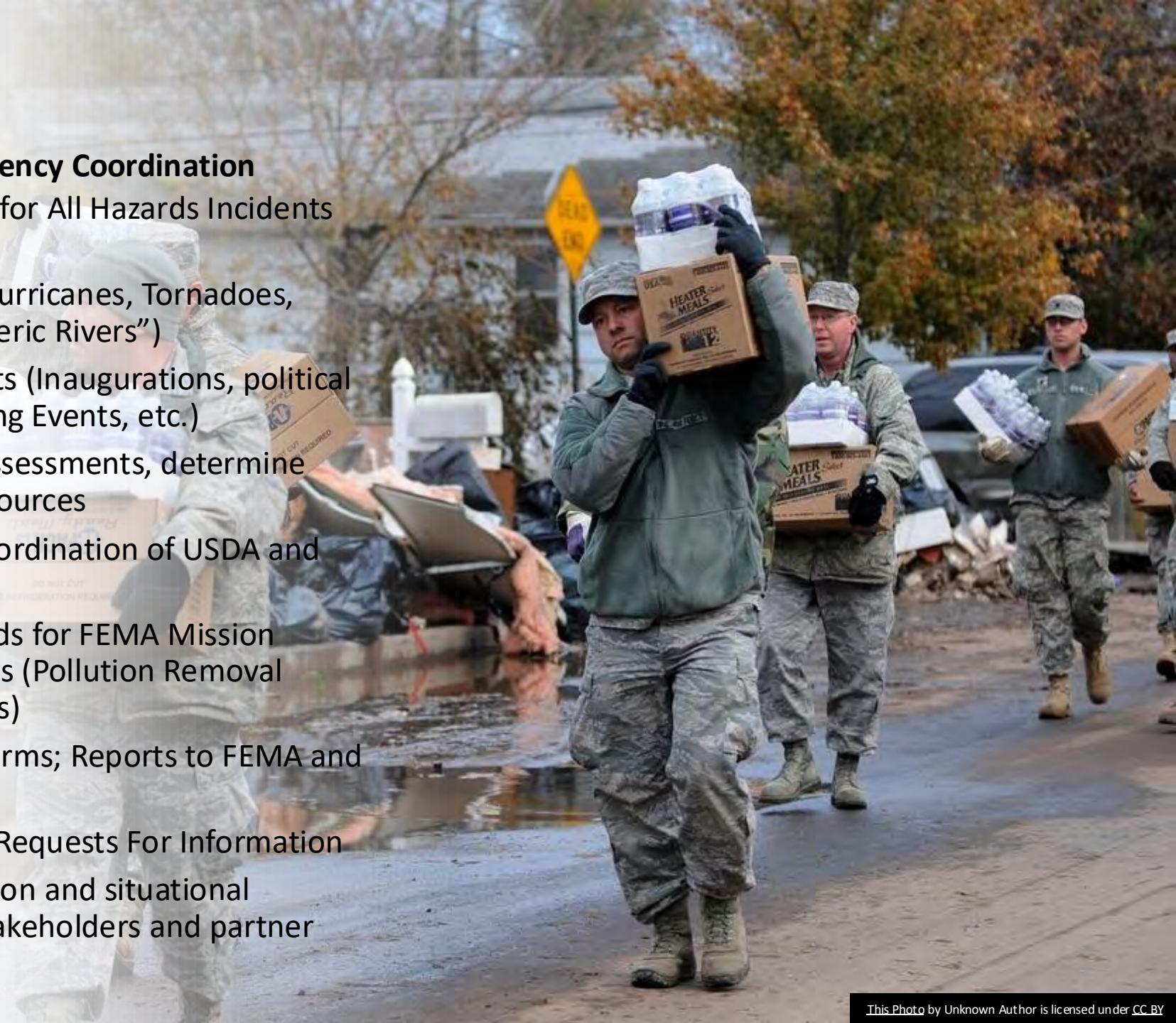
# Response

When activated by the FEMA Region, deploys to a designated coordination facility (Regional Response Coordination Center, Joint Field Office, Initial Operating Facility, State Emergency Operations Center, etc.) to provide a single point of contact for ESF #11 response coordination.

## Response Continued

### Small- and Large-Scale Emergency Coordination

- Serve as USDA Liaison for All Hazards Incidents and Events
  - Natural Disasters (Hurricanes, Tornadoes, Flooding, “Atmospheric Rivers”)
  - National Level Events (Inaugurations, political conventions, Sporting Events, etc.)
- Conduct Situational Assessments, determine needs and identify resources
- Provide emergency coordination of USDA and NGO Resources
- Manage work and funds for FEMA Mission Assignments and PRFAs (Pollution Removal Funding Authorizations)
- Submit SITREPs; ICS Forms; Reports to FEMA and USDA HQ
- Respond to high level Requests For Information
- Maintain communication and situational awareness with key stakeholders and partner agencies





**USDA APHIS**



**Who we are**

**Animal Care (AC)**

**Plant Protection and  
Quarantine (PPQ)**

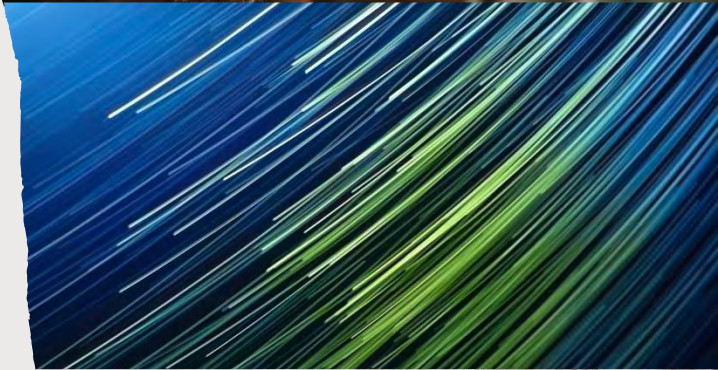
**Veterinary Services (VS)**

**Wildlife Services (WS)**

**Emergency and  
Regulatory Compliance  
Services (ERCS)**



**I will just touch briefly  
on each program as the  
other presenters will go  
more in depth as to  
their capabilities.**



# Animal Care (AC)

- Supports DHS/FEMA and ESF #6 (Mass Care, Emergency Assistance, Housing and Human Services), ESF #8 (Public Health and Medical Services), ESF #9 (Search and Rescue) and ESF #14 (Long-Term Community Recovery) to ensure an integrated response that provides for the safety and well-being of household pets
- Provides technical assistance and subject-matter expertise for activities including the evacuation, transportation, sheltering, husbandry, and veterinary care of affected household pets





## Pets Evacuation & Transportation Standards (PETS) Act

***DAP (Disaster Assistance Policy) 9523.19***

**Key Provisions:**



- **Defines “Household Pet” as:**

- Domesticated Animals (e.g., dogs, cats,
- birds, rabbits, rodents, or turtles)
- Traditionally kept in home for pleasure
- rather than commercial purposes
- Can travel in commercial carriers
- Can be housed in temporary facilities

- **Does not include:**

- Reptiles (except turtles)
- Amphibians
- Fish
- Insects/arachnids
- Farm Animals (including horses)
- Animals kept for racing purposes



# Plant Protection & Quarantine (PPQ)

- Addresses the potential for plant disease outbreaks
- Provides for control and eradication of an outbreak of a highly infective exotic plant disease, or economically devastating plant pest infestation
- Offers technical expertise for the inspection, quarantine enforcement, fumigation, disinfection, sanitation, pest extermination, and destruction of infected/contaminated plant material



# Veterinary Services (VS)

Animal diseases

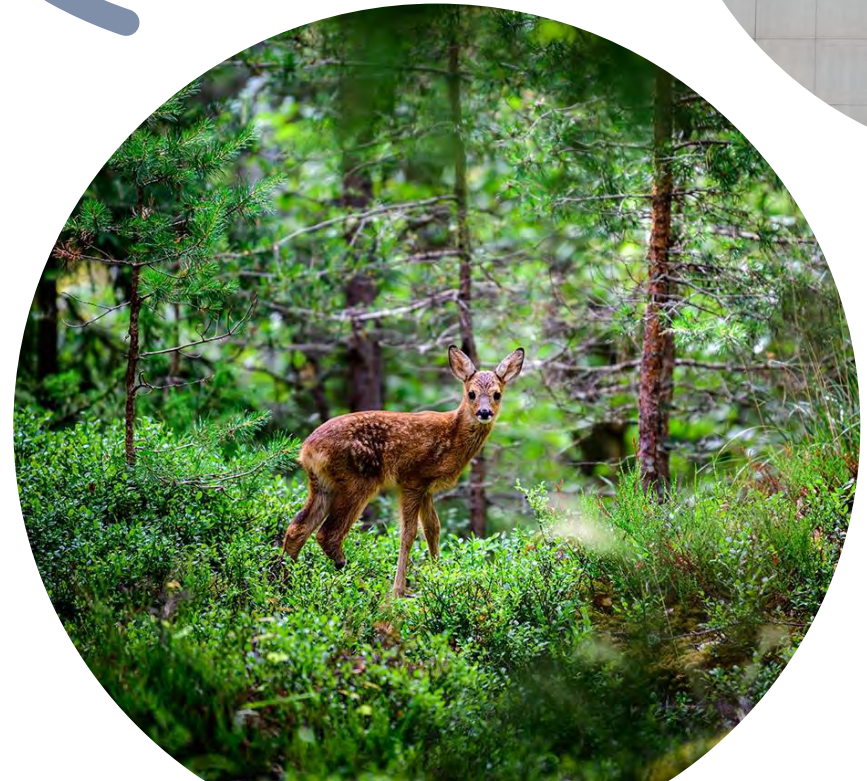
Livestock issues

National Veterinary Stockpile (contract companies for 3-D Programs: Depopulation, Disposal, Decontamination)



# Wildlife Services (WS)

- Provides technical expertise in wild or free roaming animal mitigation actions such as tracking, trapping, and removal
- Provides technical expertise in wildlife surveillance utilizing fixed or rotary wing aircraft & drones
- Coordinates with ESF #10 activities regarding oil/hazmat issues involving wildlife



# Food Safety & Inspection Services (FSIS)

Related to meat, poultry, and egg products:

Coordinates disposal of contaminated food products

Provides inspectors and laboratory services to affected areas

Assesses the operating status of inspected meat, poultry, and egg product processing, distribution, import, and retail facilities in the affected area

Suspends operations of meat, poultry, and egg processing plants as appropriate



## Food & Nutrition Services (FNS)

- Coordinates with State, local and voluntary organizations to:
- Provide food for shelters and other mass feeding sites.
- Distribute food packages directly to households in need in limited situations.
- Issue Disaster Supplemental Nutrition Assistance Program (D-SNAP) benefits.



# Food and Nutrition Service Programs (FNS)



- Child Nutrition Programs
- Child and Adult Care Food Program
- National School Lunch Program
- School Breakfast Program
- Supplemental Nutrition Assistance Program (SNAP)
- Special Supplemental Nutrition Program for Women, Infants, and Children (WIC)
- **Food Distribution Program on Indian Reservations**
- Commodity Supplemental Food Program
- The Emergency Food Assistance Program
- Disaster Supplemental Nutrition Assistance Program (D-SNAP)
- Disaster Household Distribution

This Photo by Unknown Author is licensed under [CC BY](#)



This Photo by Unknown Author is licensed under [CC BY](#)

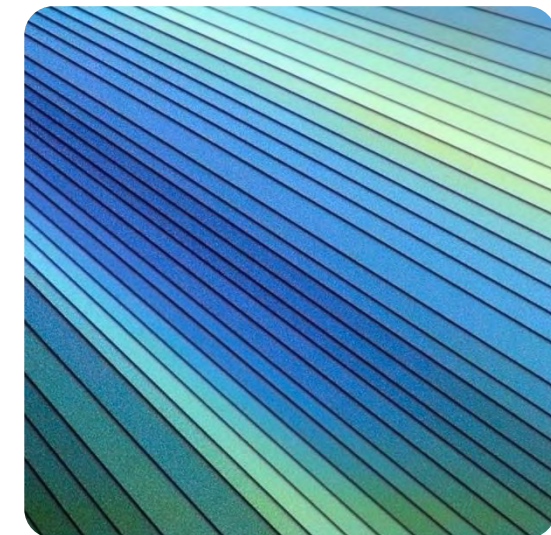


# Department of Interior (DOI) (Partner Agency)

Guidance on assessment, recovery and stabilization of historic sites, structures, and museum and archival collections, cultural resources

Historic preservation surveys

Threatened and endangered species consultations and wetlands surveys associated with installation of temporary housing facilities





# Department of Interior Program Offices

- Fish & Wildlife Services (FWS)
- National Parks Service (NPS)
- US Geological Services (USGS)
- Bureau of Land Management (BLM)
- Mineral Management Service (MMS)
- Bureau of Indian Affairs (BIA)
- Bureau of Reclamation (BOR)
- Office of Surface Mining (OSM)
- Bureau of Indian Education (BIE)



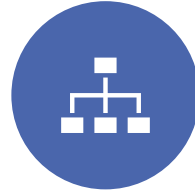
**FEMA OFTEN “COMES CALLING” TO ESF #11 ON ANYTHING REMOTELY RELATED TO AGRICULTURE, PETS, FOOD COMMODITIES, & NATURAL, CULTURAL AND HISTORIC RESOURCES:**



**CROP DAMAGE AND ECONOMIC IMPACT; LIVESTOCK INDEMNITY PROGRAM - FARM SERVICE AGENCY (FSA)**



**NATIONAL RESOURCES CONSERVATION SERVICE (NRCS)**



**RISK MANAGEMENT AGENCY (RMA)**



**HOUSING - RURAL DEVELOPMENT (RD)**



**POTENTIAL FOR SECRETARY OF AGRICULTURE’S DECLARATION**



**USDA ESF #11 IS COMMITTED TO PROVIDING CRITICAL SUPPORT TO TRIBAL NATIONS, ENSURING THAT THEY RECEIVE THE NECESSARY ASSISTANCE TO PROTECT THEIR FOOD SUPPLY, NATURAL AND CULTURAL RESOURCES**

# Other USDA Agencies with Disaster Related Response/Recovery Authorities



**The National Tribal Affairs Advisor is the point of contact between the FEMA Administrator, FEMA's Regional Tribal Liaisons, and tribal governments across the country.**

**Our Region Representative is:**

Ashley J. Zacherle

Tribal Affairs Advisor

FEMA Region 10

Mobile: (202) 316-1415

[ashley.zacherle@fema.dhs.gov](mailto:ashley.zacherle@fema.dhs.gov)

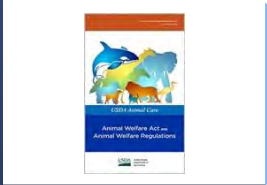
Jody Olney

Tribal Relations Specialist

FEMA Region 10

Mobile: (202) 615-7897

[Jody.Olney@fema.dhs.gov](mailto:Jody.Olney@fema.dhs.gov)



Questions?

Please feel free to contact