

# NPAIHB Weekly Update

March 12, 2024

Please sign in using the chat box:

Enter the tribe or organization you are representing  
and names of all people participating with you today



NORTHWEST PORTLAND AREA  
INDIAN HEALTH BOARD  
*Indian Leadership for Indian Health*

# Information for Today's Call

## Agenda

- Welcome & Introduction: Bridget Canniff
- Upcoming Indian Country ECHO Sessions
- Upcoming NPAIHB Weekly Update Sessions
- NWTEC Update: Victoria Warren-Mears
- IHS and/or State Partner Updates
- Questions & Comments

## Guidelines

- Please place yourself on mute unless speaking
- Sign in, using chat box, with your tribe/organization and names of all participants
- Use the chat box for questions, for Q&A after updates and announcements



# Upcoming Indian Country ECHO telehealth opportunities

- **Journey to Health ECHO** – 2<sup>nd</sup> & 4<sup>th</sup> Thursday of every month at 7am/12pm PT
  - Thursday, March 14<sup>th</sup> at 7am PT
  - Topic: *Trauma Informed Care in the Setting of Sexual Assault*
  - To learn more and join: <https://www.indiancountryecho.org/program/journey-to-health-echo-program/>
- **Cardiology ECHO** – 3<sup>rd</sup> Monday of every month at 11am PT
  - Monday, March 18<sup>th</sup> at 11am PT
  - Didactic Topic: *Narrow Complex Tachycardia*
  - To learn more and join: <https://www.indiancountryecho.org/program/cardiology-echo-program/>
- **emRIC ECHO**
  - Monday, March 18<sup>th</sup> at 8:30 am PT
  - Topic: *Regional Vector Borne Illness*
  - To learn more and join: <https://www.indiancountryecho.org/program/emergency-medicine-echo-program/>
- **Community Health Representative (CHR) ECHO** – 3<sup>rd</sup> Monday of every month at 12:00pm PT
  - Monday, March 18<sup>th</sup> at 12:00pm PT
  - Topic: *CHW/CHR Competency Overview, How to Track It and a Tool to Communicate*
  - To learn more and join: <https://www.indiancountryecho.org/program/community-health-series/>

# Weekly Update Schedule Preview: March-April

**March 19:** Public Health Update – NW Tribal Dental Support Center / Public Health Dentistry

**March 26:** Legislative & Policy Update

**April 2:** Public Health Update – Native CARS / Child Passenger Safety / Injury Prevention

**April 9:** NWTEC Epi/Data Update – Northwest AI/AN Opioid Overdose Mortality Data Brief

**April 16:** Public Health Update – OR Poison Control Center (tentative)

**April 23:** **No Update** – NPAIHB QBM Week

**April 30:** Legislative & Policy Update



NORTHWEST PORTLAND AREA  
INDIAN HEALTH BOARD  
*Indian Leadership for Indian Health*

# Northwest Tribal Dental Support Center & Northwest Tribal Elders Project

Join the training webinar and hear about Periodontal disease and association to  
development of Alzheimer's disease

March 14th, 2024  
12 pm- 1 pm PST



Presented by:

Northwest Portland Area Indian Health Board  
Northwest Tribal Dental Support Center &  
Northwest Tribal Elders Project

## Designed for:

- Oral Health/Dental Clinical providers and staff
- Dental Students
- Tribal Elder Services/programs
- Caregivers
- Senior Center Programs
- Community Health Representatives/Worker's
- Tribal Health Professionals
- Clinical Provides
- Social Workers

Trainer/Presenter: CAPT Dr. Eric Jewell,  
Indian Health Service National  
Periodontal Consultant

## Facilitators:

Ticey Mason, Project Director  
Northwest Tribal Dental Support Center  
Chandra Wilson, Project Director  
Northwest Tribal Elders Project  
Building Our Largest Dementia Network

## Register Here:



## Learning Objectives:

Links between oral health and dementia  
Risk Reduction – reducing the onset of  
dementia and importance of dental care  
who may have early symptoms.  
Periodontal Disease and chronic  
inflammation associated with Vascular  
Dementia







"Weaving oral health into healthy lives"

# Save The Date

## May 7th-9th, 2024



## 2024 Portland Area Dental Meeting

May 7th-9th, 2024, Salishan Coastal Lodge in Gleneden Beach, OR

*Inviting all dental staff! We strongly encourage Dental Directors/Supervisors, Prevention Coordinators and Health Directors to attend this meeting. You are welcome to invite other staff as well. Please make sure they register individually.*

Date:	Content:	Time:
Monday, May 6th, 2024	Early registration	3:00 pm – 5:00 pm
Tuesday, May 7th, 2024	Dental Director's Mtg NTDSC Orientation	8:30 am – 12:00 pm 1:00 pm – 3:30 pm
Wednesday, May 8th, 2024	Portland Area Dental Meeting Reception	8:30 am – 4:30 pm 6:00 pm – 9:00 pm
Thursday, May 9th, 2024	Portland Area Dental Meeting	8:30 am – 12:00 pm

**For online booking go to:**  
[Link to direct group reservation](#)  
Use Group ID: 21886

**For reservations by phone:**  
To make reservations, your attendees must call the Salishan Coastal Lodge Group Reservation Department at 541-764-3600 between the times of 7:00am – 7:00pm and identify themselves as participants of this event to receive the special rates quoted.

- Press #1 for Lodging Reservations
- Press #2 for Designated Group Reservations

Room Rate: \$131 + tax  
Salishan Coastal Lodge | 7760 North Highway 101  
Gleneden Beach, OR 97388  
(541) 764-3600 | [www.salishan.com](http://www.salishan.com)

Please contact Ticey Mason for details at [tmason@npaihb.org](mailto:tmason@npaihb.org)

## Registration:



Or visit [www.surveymonkey.com/r/2024\\_PADM](http://www.surveymonkey.com/r/2024_PADM)

**Reservations must be booked by April 6th 2024**



**NORTHWEST PORTLAND AREA  
INDIAN HEALTH BOARD**  
*Indian Leadership for Indian Health*

# Northwest Tribal Public Health Emergency Preparedness Conference

*June 10-12, 2024*

**Registration link:**

<https://bit.ly/TPHEP2024RegistrationLanding>

**Call for proposals due 4/12/24 use link below to submit proposal:**

<https://www.surveymonkey.com/r/TPHEP2024>

**All links are available on the NPAIHB events calendar at:**

[www.npaihb.org/npaihb-events/](http://www.npaihb.org/npaihb-events/)

## Spirit Mountain Casino

27100 SW Salmon River Hwy

Grand Ronde, OR 97347

<https://bit.ly/2024TPHEPHotelReservation>

**Tribal travel scholarships are available**

**Questions??** Contact the planning team @ NPAIHB at  
[tphep@npaihb.org](mailto:tphep@npaihb.org)

**Conference funded by:**

*Northwest Portland Area Indian Health Board  
Oregon Health Authority Public Health Division  
Washington State Department of Health  
Idaho Department of Health and Welfare*



Funding for this conference was made possible in part by Grant CDC-RFA-TP19-1901 from the Centers for Disease Control and Prevention (CDC). The views expressed in written conference materials or publications and by speakers and moderators do not reflect the official policies of the Idaho Department of Health and Welfare or the Centers for Disease Control and Prevention, nor does mention of trade names, commercial practices, or organizations imply endorsement by the US Government.

Victoria Warren-Mears, PhD, RDN, FAND  
Director, Northwest Tribal Epidemiology Center  
March 12, 2024

# NWTEC Update





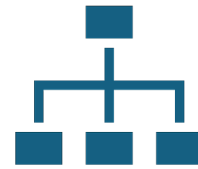
# Agenda



Discuss the structure  
of the NWTEC



Overview of Services  
to Tribes



Structuring of Public  
Health Service



Questions

# The Northwest Tribal Epicenter is

One of the Divisions of  
the NPAIHB

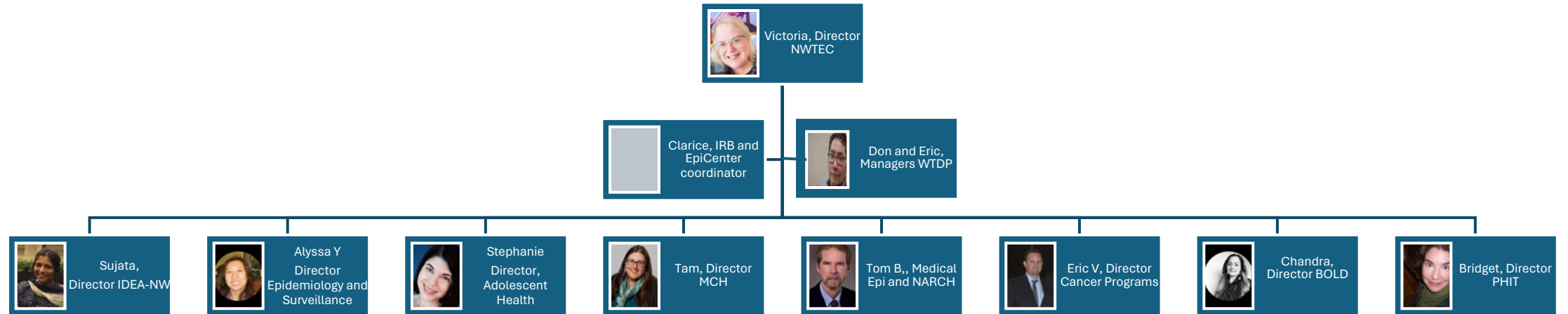
One of the 12 Tribal  
Epidemiology Centers  
funded by Indian  
Health Service.

The result of  
Legislation passed in  
1992 and implemented  
in 1997 for first funding  
of TECs.

Designated as a public  
health authority for  
data support to Tribes,  
through Legislation  
passed in 2010 IHCA.

A provider of training,  
technical assistance  
and data support.

# Organization of the NWTEC



+ Evaluation Core Rose James

# Our Services

- Data Science Support through
  - DRTA – Data Request for Technical Assistance found on the front page of the NPAIHB website.
  - Data Publications – found under the IDEA-NW Tab on the web site.
    - <https://www.npaihb.org/idea-nw/>
  - Data Hub – tribal access to data for PRCDA for each tribe.
    - COMING THIS SPRING/SUMMER!
  - Native Data - <https://natedata.npaihb.org/>
    - A data sharing resource for native people and organizations
  - Training upon request and through NARCH Summer Institute



# Our Services Continued

- Data Science Support
  - Western Tribal Diabetes Project
    - Training and Technical Assistance for the Diabetes Audit
    - In person 4 times per year; also available via Zoom

# Our Services Continued

- Adolescent Health
  - We R Native
    - A multimedia health resource for Native teens and young adults ([www.weRnative.org](http://www.weRnative.org)). The service includes an interactive website ([weRnative.org](http://weRnative.org)), a text messaging service (Text NATIVE to 97779), a Facebook page, a YouTube channel, a Twitter account, and print marketing materials.
  - Project Red Talon
  - Healthy Native Youth
    - A one-stop-shop for educators and health advocates who want to expand learning opportunities for AI/AN youth ([www.HealthyNativeYouth.org](http://www.HealthyNativeYouth.org)). The site contains curricula, quizzes, handouts and training tools needed to access and deliver effective, age-appropriate sexual health programs.
  - Tribal Youth Leadership and Delegates

# Our Services

- Maternal Child Health
  - Native Boost
  - Vacclnative
  - Child Passenger Safety Seat
  - Breastfeeding Promotion
- Good Health and Wellness in Indian Country (WEAVE-NW)
  - Cardiovascular Health
  - Commercial Tobacco Cessation
  - Tribal Food Sovereignty
  - Breast/Chest Feeding Promotion

---

## Our Services

- NW-NARCH
  - Resource Library
  - Applied Biostatistics and Data Science
  - Research Fellowships
  - Internship Experiences
  - Public Health Research Academy
    - For Native High School Students

# Summer Research

## TRAINING INSTITUTE

for American Indian and Alaska Native Health  
Professionals and Students

**SAVE THE DATE**

**JUNE 10 - 21, 2024**

**IN-PERSON**

**PORTLAND, OREGON**

NW NARCH

NPAIHB



# Our Services

- Cancer Prevention and Tobacco Prevention
  - In 1999 the NPAIHB was the first Tribal organization to receive a CDC Comprehensive Cancer Grant, from which the Northwest Tribal Comprehensive Cancer Program was created.
  - NTCCP provides technical assistance to tribes on tribal action plans for local cancer activities, resource information, Kiki the inflatable colon, cancer data and cancer education training.
  - Cancer Coalition: Interested in being part of the coalition? Sign up from this web page: <https://www.npaihb.org/ntccp-coalition-signup/>

# Our Services Continued

- Tobacco Project focuses on:
  - Commercial Tobacco Prevention and Cessation
  - Traditional Tobacco Use
  - Tribal Best Practices
  - Tobacco Policy
  - Training and Technical Assistance.

# Our Services Continued

- BOLD
  - Strengthen and foster the growth of dementia workforce at the tribal community-level
  - Support Northwest Tribes to promote Alzheimer's Disease and Related Dementias (ADRD) risk reduction, early detection and caregivers support strategies
  - Implement clinical and community-based prevention programs
  - Provide training and technical assistance
  - Provide ongoing education and awareness/learning opportunities for individuals needing care, caregivers, and clinical providers

# Our Services Continued

---

- Public Health Improvement and Training (PHIT)
  - Establish and implement a Public Health Accreditation Performance Management Office that will provide education, technical assistance, and support to tribally-based health departments and programs, to engage in continuous performance improvement using the Public Health Accreditation standards.
  - Increase the number of tribally-based health program staff trained in performance management across key areas using Quality Improvement (QI) methods, by facilitating their participation in available trainings and webinars.



# Our Services Continued

- Oregon Tribal Public Health Improvement and Training
  - Public Health Community Assessments
  - Assisted with CHP
  - Community of Practice
- Washington Tribal Public Health Improvement
  - Provide Data for Chronic Diseases
  - Training and outreach of topics of interest



**Tribal Public Health Emergency Preparedness Conference**  
*June 10-12, 2024*

**Registration link:**  
<https://bit.ly/TPHEP2024RegistrationLanding>

**Presenter Proposals:**  
<https://www.surveymonkey.com/r/TPHEP2024>

**Agenda:**  
<https://bit.ly/2024TPHEPdraftAgenda>

**Vendor applications**  
<https://www.surveymonkey.com/r/TPHEP2024vendor>

**Spirit Mountain Casino**  
27100 SW Salmon River Highway  
Grand Ronde, OR 97347

Reduced rate \$107.00 rooms available until **May 10, 2024** either click the button  
or call 800-760-7977 and ask for group code 4984 TPHEP Attendee Room Block [Hotel Reservations](#)

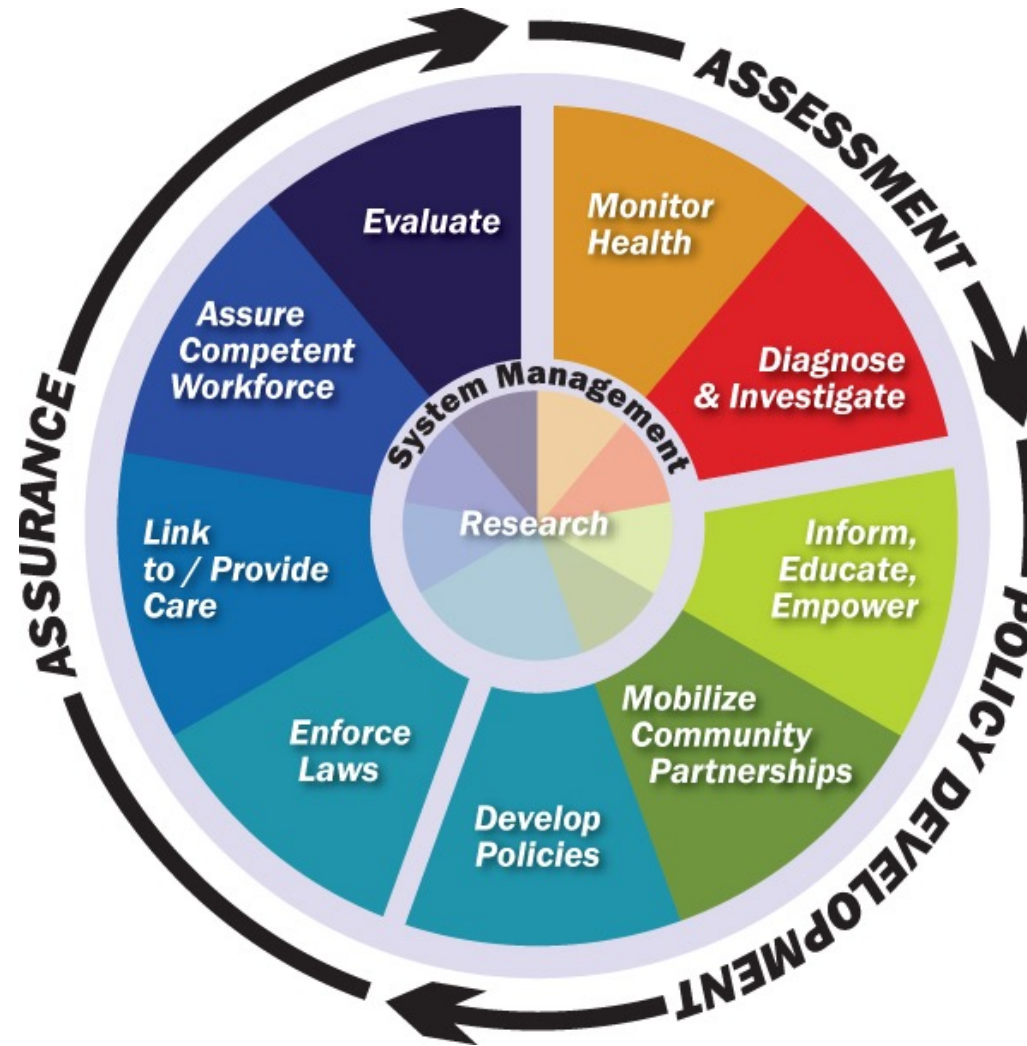
**Questions??** Contact the planning team @ NPAIHB at [tphep@npaihb.org](mailto:tphep@npaihb.org)

**Conference funded by:**  
Northwest Portland Area Indian Health Board Oregon Health Authority  
Public Health Division Washington State Department of Health  
Idaho Department of Health and Welfare



Funding for this conference was made possible in part by Grant CDC-RFA-TP19-1901 from the Centers for Disease Control and Prevention (CDC). The views expressed in written conference materials or publications and by speakers and moderators do not reflect the official policies of the Idaho Department of Health and Welfare or the Centers for Disease Control and Prevention, nor does mention of trade names, commercial practices, or organizations imply endorsement by the US Government.

# 10 Essential Functions of Public Health



# Structuring of Public Health Services

Which Public Health Functions are most important to your community?

Which services are you already performing?

Do you need all services locally or is there opportunity to share services?

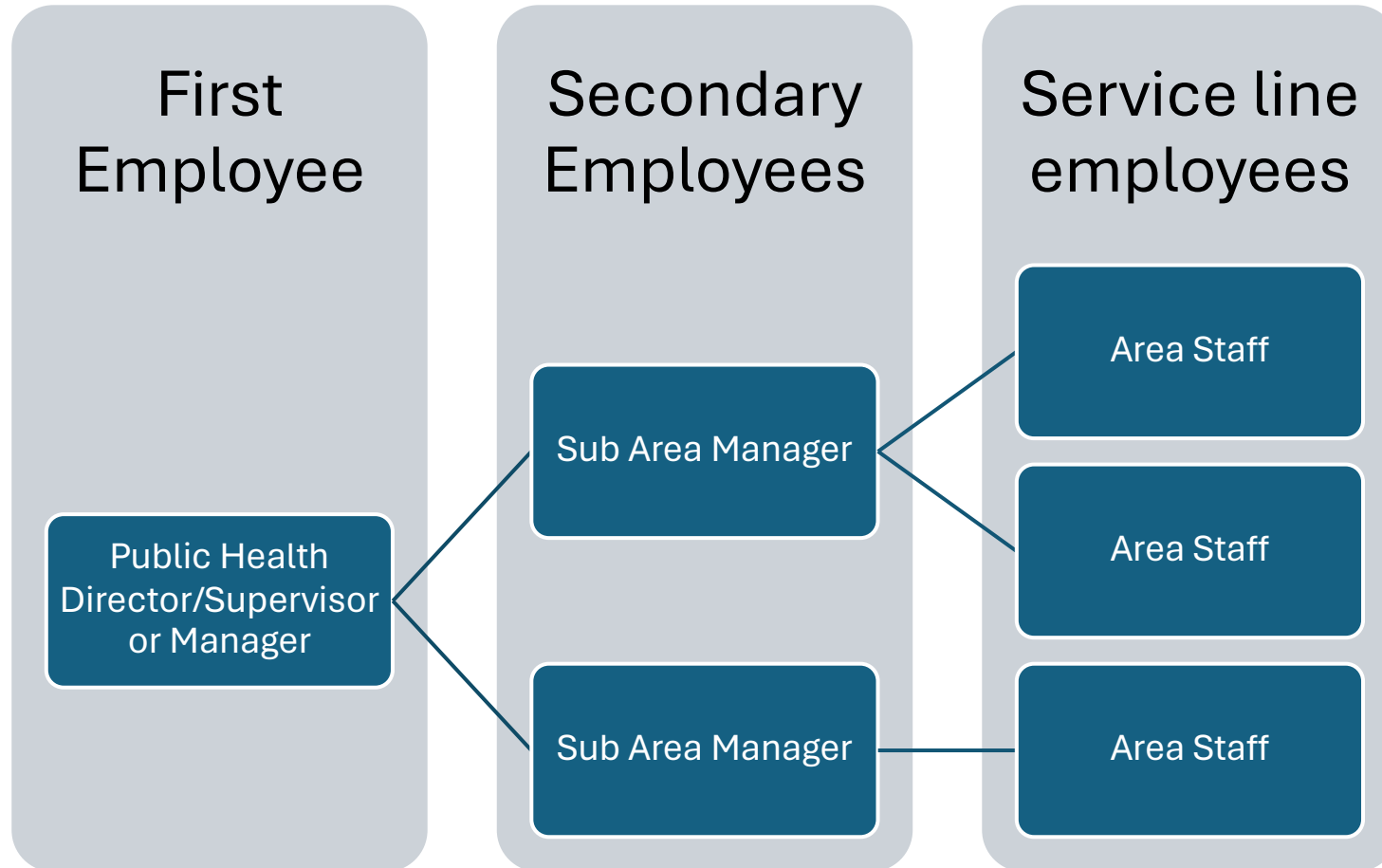
How much staff do you have or desire to have and what are funding sources for that staff?

How or should you partner with LHJs/the State and Federal Government?

# Cross Jurisdictional Sharing

- Cross-jurisdictional sharing can range from supporting informal arrangements to more formal changes in structure. In public health, cross-jurisdictional sharing often occurs between health departments or agencies serving two or more jurisdictions. Collaboration allows communities to solve issues or problems that cannot be easily solved by a single organization or jurisdiction.
- NWTEC Projects are prepared to enter into MOUs to assist in achieving public health program goals.

# Structure Depends on Size, Defined Needs and Funding



# Suggested Organization Steps



**Initial community assessment (definition of needs) in collaboration with Government**



**Examine existing public health policies**

Are they okay or do they need modernizing



**Develop desired structure and funding sources.**



**Write grants/contracts for funding or advocate for other funding**



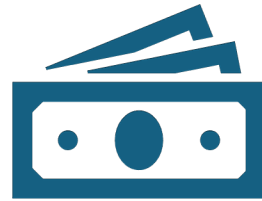
**Hire subsequent staff.**



# Suggested Organizational Steps continued



Consider MOU/MOA to  
accelerate your plan



Consider long term  
funding and sustainability



Tribal Government buy in  
at each step.

# Create a Vision for Public Health



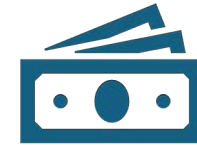
What are the community health outcomes?



What are the key metrics of success?



How will initiatives grow in the long-term?



How will funding be secured in the short, mid and long term?

# Questions/Comments

---

- Contact Information:

Victoria Warren-Mears

[vwarrenmears@npaihb.org](mailto:vwarrenmears@npaihb.org)



503-998-6063



# Portland Area IHS COVID -19 Update

---

GENIEL HARRISON, MD  
CHIEF MEDICAL OFFICER  
OFFICE, PORTLAND AREA IHS  
MARCH 12, 2024



# Topics for Today

---

## Current Situation Report –

- Up to date with the COVID Vaccine
- Outpatient Influenza-like Illnesses
- National ED visits total and by ages
- COVID-19
- Influenza
- National Nutrition Month



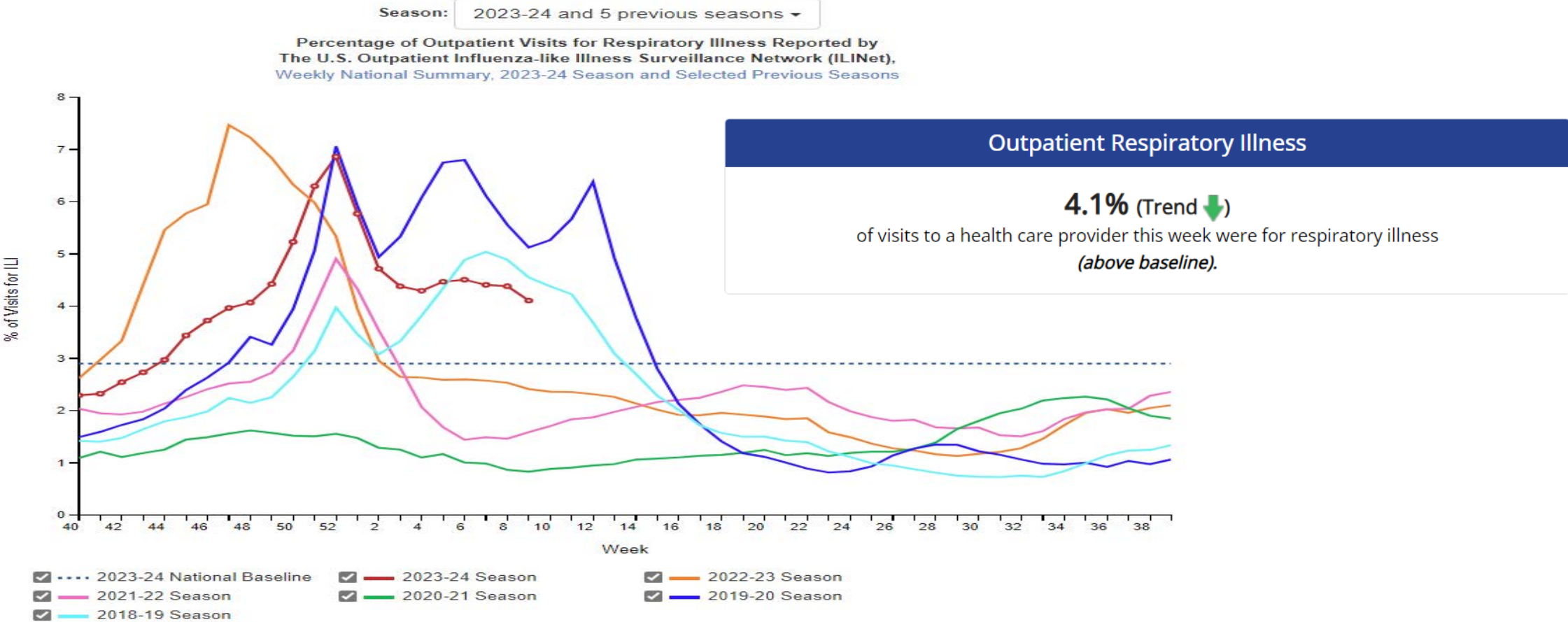
# COVID Vaccine

## What You Need to Know

- CDC recommends the 2023–2024 updated COVID-19 vaccines: Pfizer-BioNTech, Moderna, or Novavax, to protect against serious illness from COVID-19.
- [Everyone aged 5 years and older](#) <sup>‡</sup> should get **1 dose of an updated COVID-19 vaccine** to protect against serious illness from COVID-19.
- [Children aged 6 months–4 years](#) need multiple doses of COVID-19 vaccines to be [up to date](#), including at least 1 dose of updated COVID-19 vaccine.
- [People who are moderately or severely immunocompromised](#) may get additional doses of updated COVID-19 vaccine.
- People aged 65 years and older who received 1 dose of any updated 2023-2024 COVID-19 vaccine (Pfizer-BioNTech, Moderna or Novavax) should receive 1 additional dose of an updated COVID-19 vaccine at least 4 months after the previous updated dose. For more Novavax information, [click or tap here](#).
- COVID-19 vaccine recommendations will be updated as needed.
- People who are up to date have lower risk of severe illness, hospitalization and death from COVID-19 than people who are unvaccinated or who have not completed the doses recommended for them by CDC.



# Outpatient Respiratory Illness Visits



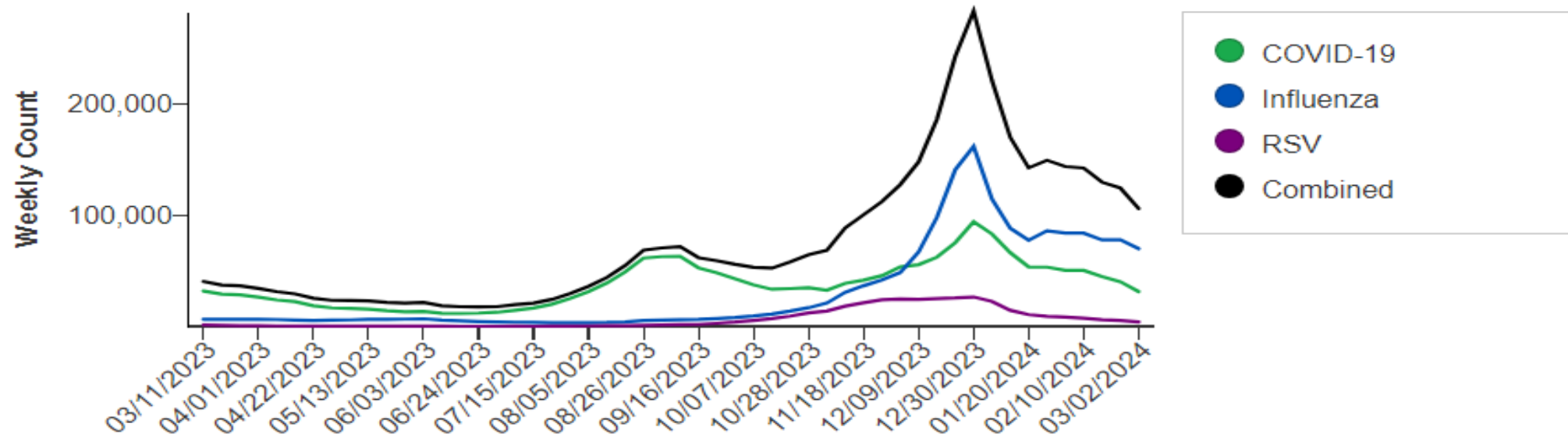
# National ED Visits for COVID, Flu, RSV

## Weekly Emergency Department Visits by Age Group

Make a selection from the filters to change the visualization information.

### Age Group

All Ages ▼



# COVID-19 Update in the US

## COVID-19 Update for the United States

### Early Indicators

#### Test Positivity >

% Test Positivity

6.5%

(February 25 to March 2, 2024)

Trend in % Test Positivity

**-1%** in most recent week



Jan 13, 2024

Mar 2, 2024

#### Emergency Department Visits >

% Diagnosed as COVID-19

1.2%

(February 25 to March 2, 2024)

Trend in % Emergency Department Visits

**-21.2%** in most recent week



Jan 13, 2024

Mar 2, 2024

### Severity Indicators

#### Hospitalizations >

Hospital Admissions

15,141

(February 25 to March 2, 2024)

Trend in Hospital Admissions

**-13.6%** in most recent week



Jan 13, 2024

Mar 2, 2024

#### Deaths >

% of All Deaths in U.S. Due to COVID-19

2.2%

(February 25 to March 2, 2024)

Trend in % COVID-19 Deaths

**No change** in most recent week



Jan 13, 2024

Mar 2, 2024

These early indicators represent a portion of national COVID-19 tests and emergency department visits. [Wastewater](#) information also provides early indicators of spread.

Total Hospitalizations

6,866,673

Total Deaths

1,183,143

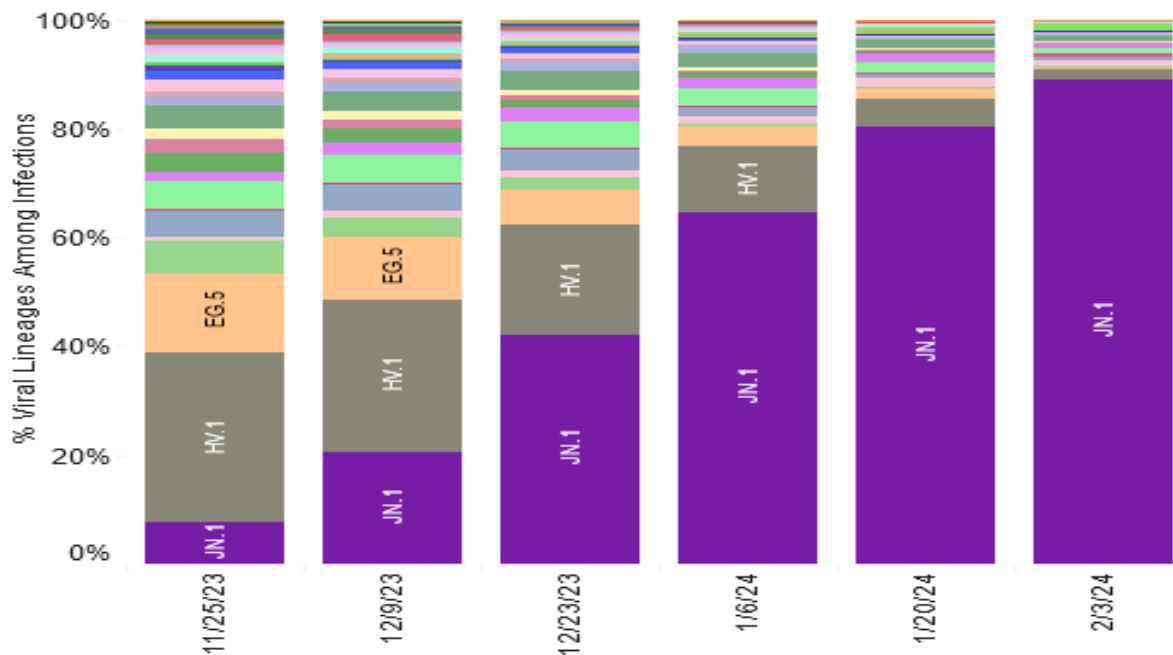
# Variants

## Weighted and Nowcast Estimates in United States for 2-Week Periods in 11/12/2023 – 3/2/2024

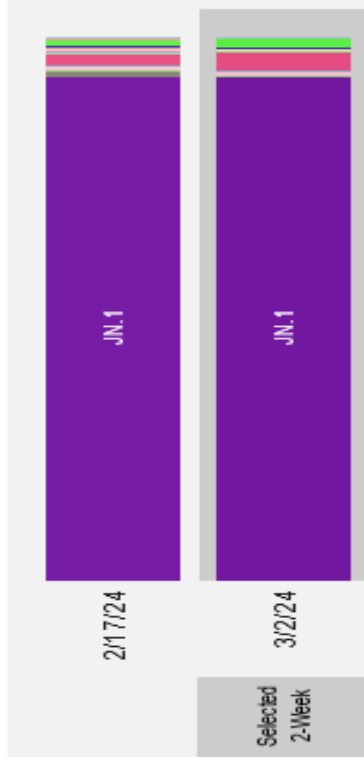
## Nowcast Estimates in United States for 2/18/2024 – 3/2/2024

Hover over (or tap in mobile) any lineage of interest to see the amount of uncertainty in that lineage's estimate.

**Weighted Estimates:** Variant proportions based on reported genomic sequencing results



**Nowcast:** Model-based projected estimates of variant proportions



Collection date, two-week period ending

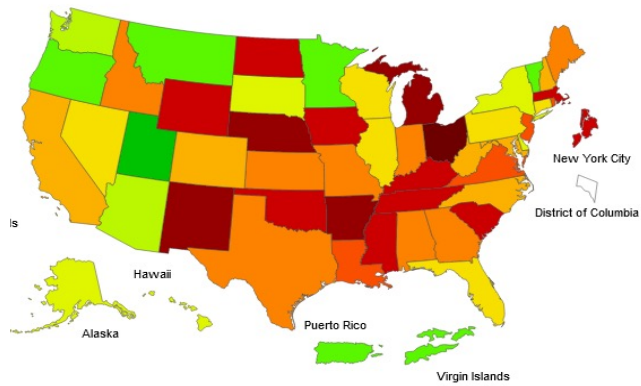
### USA

WHO label	Lineage #	%Total	95%PI
Omicron	JN.1	92.3%	90.5-93.8%
	JN.1.13	3.3%	1.8-5.7%
	JN.1.18	1.8%	1.1-2.9%
	HV.1	0.4%	0.3-0.5%
	BA.2.86	0.3%	0.2-0.5%
	JG.3	0.2%	0.1-0.2%
	BA.2	0.2%	0.0-0.7%
	JD.1.1	0.1%	0.1-0.2%
	HK.3	0.1%	0.0-0.1%
	EG.5	0.0%	0.0-0.0%
	XBB	0.0%	0.0-0.0%
	GE.1	0.0%	0.0-0.1%
	EG.5.1.8	0.0%	0.0-0.0%
	JF.1	0.0%	0.0-0.0%
	XBB.1.9.1	0.0%	0.0-0.0%
	FL.1.5.1	0.0%	0.0-0.0%
	XBB.1.16.15	0.0%	0.0-0.0%
	XBB.1.5.70	0.0%	0.0-0.0%
	XBB.2.3	0.0%	0.0-0.0%
	XBB.1.16.6	0.0%	0.0-0.0%
XBB.1.16.11	0.0%	0.0-0.0%	
HF.1	0.0%	0.0-0.0%	
GK.1.1	0.0%	0.0-0.0%	
XBB.1.16	0.0%	0.0-0.0%	
GK.2	0.0%	0.0-0.0%	
XBB.1.9.2	0.0%	0.0-0.0%	
XBB.1.5	0.0%	0.0-0.0%	
XBB.1.42.2	0.0%	0.0-0.0%	
XBB.1.16.1	0.0%	0.0-0.0%	
EG.6.1	0.0%	0.0-0.0%	
Other	Other*	1.1%	0.6-2.0%

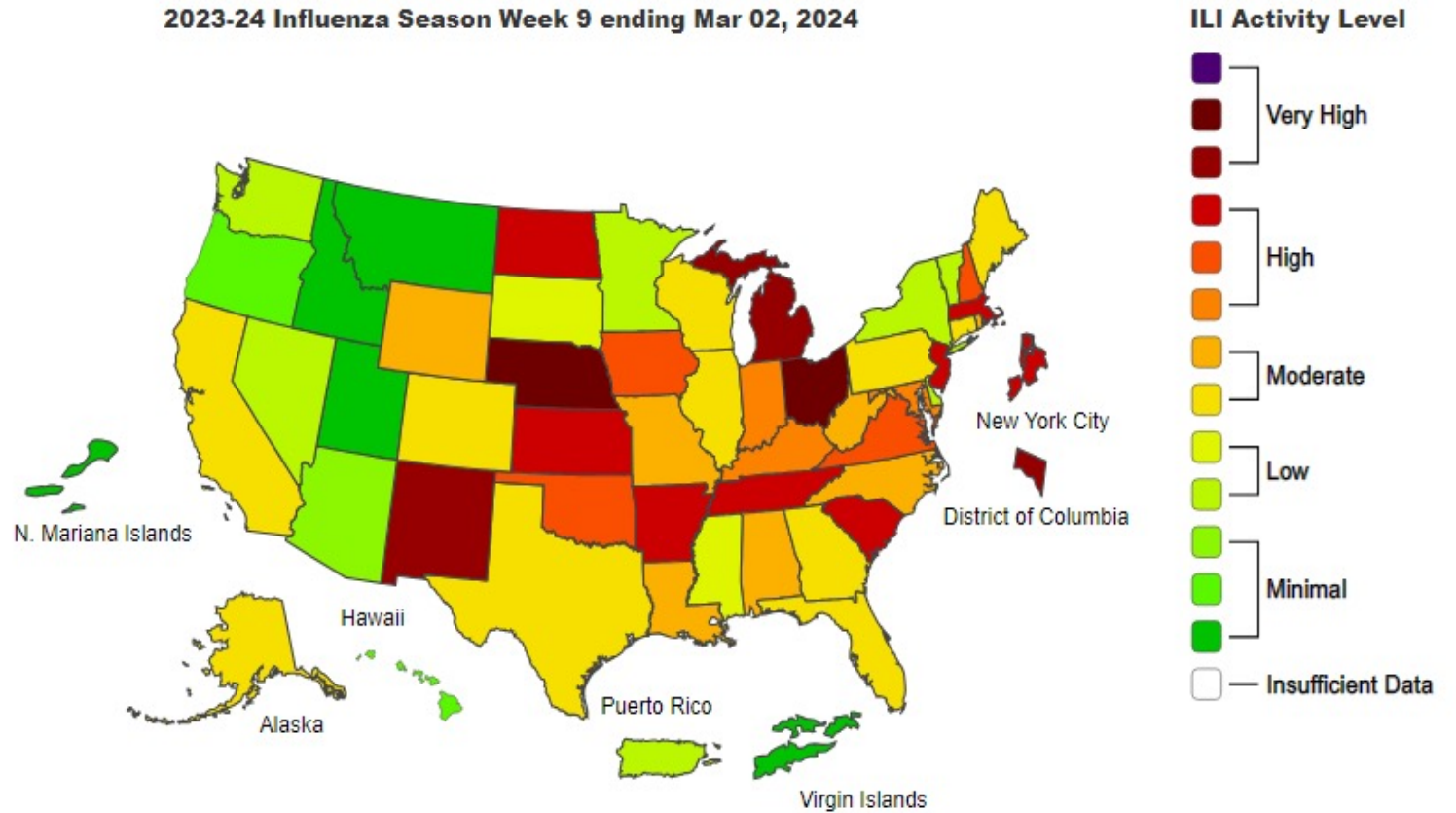


# 2023-24 Flu Season Week 9

Week 8



2023-24 Influenza Season Week 9 ending Mar 02, 2024



# National Nutrition Month in March

IHS Division of Diabetes Treatment and Prevention  
**Advancements in Diabetes**  
Webinar Series for Healthcare Professionals

**LIVE FREE**  
Online Training

**Join us for National Nutrition Month**

**WEBINARS for MARCH**

MON	TUE	WED	THU	FRI	SAT	SUN
11	12	13	14	15	16	17
18	19	20	21	22	23	24
25	26	27	28	29	30	31

**Topics include:**

- Healthy Eating Policies in Tribal Communities
- Alaska Food Sovereignty
- Childhood Nutrition

Visit: <https://www.ihs.gov/diabetes/training/#cmece>

Webinars will be recorded and available online for CME/CE/CPEU/CDE/CPE credit. See [www.ihs.gov/diabetes/training](http://www.ihs.gov/diabetes/training)



# National Nutrition Month in March

---

Topic: Healthy Food, Healthy People—Tribal Laws and Policies that Support Access to Healthy, Indigenous Foods

Date: Wednesday, March 13, 2024

Time: 3pm ET / 2pm CT / 1pm MT / 12pm PT / 11am AKT

March 20<sup>th</sup> Alaska Food Sovereignty

March 27<sup>th</sup> Childhood Nutrition

<https://www.ihs.gov/diabetes/training/cmece-online-edu/diabetes-online-cme-ce-education/#ULOE>



# State Partner Updates

- Washington
- Oregon
- Idaho



# Questions and Comments



NORTHWEST PORTLAND AREA  
INDIAN HEALTH BOARD  
*Indian Leadership for Indian Health*