

NPAIHB Weekly Update

May 9, 2023

Please sign in using the chat box:

Enter the tribe or organization you are representing
and names of all people participating with you today



NORTHWEST PORTLAND AREA
INDIAN HEALTH BOARD
Indian Leadership for Indian Health

Information for Today's Call

Agenda

- Welcome & Introduction
- Data Update:Victoria Warren-Mears
- State Partner Updates:
 - Washington
 - Oregon
 - Idaho
- Questions & Comments

Guidelines

- Please place yourself on mute unless speaking
- Sign in, using chat box, with your tribe/organization and names of all participants
- Use the chat box for questions, for Q&A after updates and announcements



Upcoming Indian Country ECHO telehealth opportunities

- **NW Elders, Knowledge Holders and Culture Keepers ECHO** – 2nd Tuesday of every month at 12pm PT
 - Tuesday, May 9th at 12pm PT
 - Didactic Topic: *Food Sovereignty – Part 2*
 - To learn more and join: <https://www.indiancountryecho.org/program/nw-elders-knowledge-holders-and-culture-keepers/>
- **Trauma Care ECHO** – 2nd Wednesday of every month at 6:30am PT
 - Wednesday, May 10th at 6:30am PT
 - Didactic Topic: *The Obese Trauma Patient*
 - To learn more and join: <https://www.indiancountryecho.org/program/trauma-care/>
- **Oral Health ECHO** – 2nd Wednesday of every other month at 12pm PT
 - Wednesday, May 10th at 12pm PT
 - Didactic Topic: *The Safe and Effective Use of Silver Diamine Fluoride and Povidone Iodine in Your Clinic*
 - To learn more and join: <https://www.indiancountryecho.org/program/oral-health-echo-program/>
- **Journey to Health ECHO** – 2nd & 4th Thursday of every month at 7am/12pm PT
 - Thursday, May 11th at 7am PT
 - Didactic Topic: *The Navajo Wellness Model – Part 2*
 - To learn more and join: <https://www.indiancountryecho.org/program/journey-to-health-echo-program/>

Upcoming Indian Country ECHO telehealth opportunities

- **Ending the Epidemics: HIV & PrEP - Virtual Training**
 - Thursday, May 11th from 9am – 11:30am PT
 - Description: *This training program is designed to aid clinicians in effectively integrating HIV and PrEP services in Indian Health Service, Tribal and Urban Indian clinics. The program will focus on the rationale for HIV care & PrEP, HIV screening and diagnosis, indications and contraindications for PrEP, HIV treatment basics, how to start PrEP, case management, and addressing complications.*
 - To learn more and join: <https://www.indiancountryecho.org/ending-the-syndemic-hiv-and-prep/>
- **Clinical Dementia ECHO** – 2nd Thursday of every month at 11am PT
 - Thursday, May 11th at 11am PT
 - Didactic Topic: *Timing and Cognitive Screens-What is the Value of Early Detection*
 - To learn more and join: <https://www.indiancountryecho.org/program/dementia-echo-program/>
- **Diabetes ECHO** – 2nd Thursday of every month at 12pm PT
 - Thursday, May 11th at 12pm PT
 - Didactic Topic: *Weight Stigma*
 - To learn more and join: <https://www.indiancountryecho.org/program/diabetes/>
- **NEW Cardiology ECHO** – 3rd Monday of every month at 11am PT
 - Monday, May 15th at 11am PT
 - Didactic Topic: *Heart Disease in Women*
 - To learn more and join: <https://www.indiancountryecho.org/program/cardiology-echo-program/>

Data Update

Victoria Warren-Mears, PhD, RDN, FAND
Northwest Tribal Epidemiology Center



NORTHWEST PORTLAND AREA
INDIAN HEALTH BOARD
Indian Leadership for Indian Health

COVID-19 Case Surveillance Data Summary

Pulled on 4/27/2023



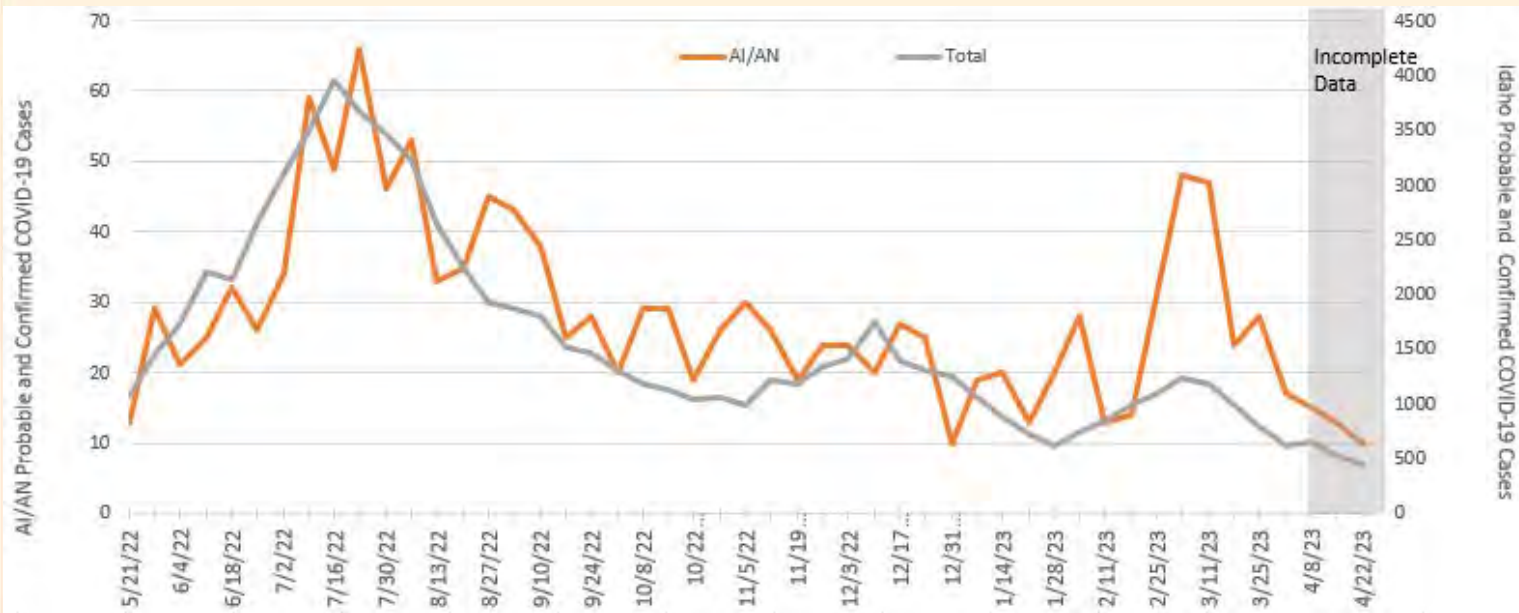
NORTHWEST PORTLAND AREA
INDIAN HEALTH BOARD
Indian Leadership for Indian Health



Idaho COVID-19 Data

Characteristics of COVID-19 Cases through 4/26

EpiCurve of COVID-19 Cases by Week



Race		N	%
	AI/AN	7,571	1.4%
	Non-AI/AN	382,255	72.9%
	Unknown	134,663	25.7%
	Total	524,489	100.0%
Case Status		AI/AN	State Total
	Laboratory Confirmed	73.5%	76.0%
	Probable	26.5%	24.0%
Sex		AI/AN	State Total
	Male	41.8%	46.4%
	Female	57.5%	53.3%
	Other	0.0%	0.0%
	Missing/Unknown	0.8%	0.3%
Age Group		AI/AN	State Total
	0-9	7.4%	5.7%
	10-19	14.0%	11.5%
	20-29	19.3%	18.5%
	30-39	19.0%	16.6%
	40-49	14.5%	14.7%
	50-59	11.4%	12.5%
	60-69	8.7%	10.0%
	70-79	4.1%	6.4%
	80+	1.6%	4.0%
	Missing	0.0%	0.0%
Hospitalization Status		AI/AN	State Total
	Hospitalized	4.1%	3.8%
	Not Hospitalized	58.4%	60.8%
	Unknown	37.5%	35.4%

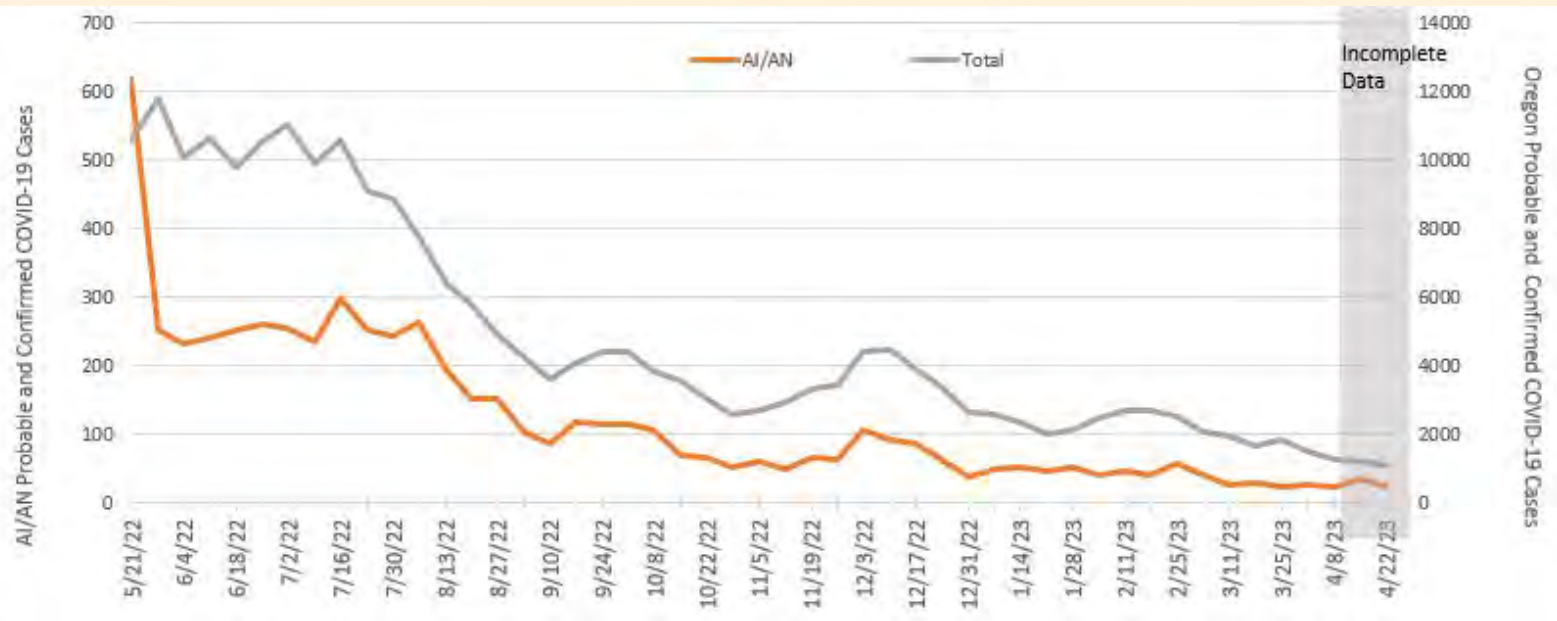


**NORTHWEST PORTLAND AREA
INDIAN HEALTH BOARD**
Indian Leadership for Indian Health



Oregon COVID-19 Data

EpiCurve of COVID-19 Cases by Week



Race		N	%
	AI/AN	26,169	2.7%
	Non-AI/AN	680,601	69.8%
	Unknown	267,762	27.5%
	Total	974,532	100.0%
Case Status		AI/AN	State Total
	Laboratory Confirmed	95.3%	94.9%
	Probable	4.7%	5.1%
Sex		AI/AN	State Total
	Male	43.2%	44.9%
	Female	55.5%	51.8%
	Other	0.1%	0.2%
	Missing/Unknown	1.2%	3.0%
Age Group		AI/AN	State Total
	0-9	8.4%	8.1%
	10-19	12.0%	11.5%
	20-29	17.5%	17.6%
	30-39	18.9%	17.0%
	40-49	15.2%	14.1%
	50-59	12.4%	11.8%
	60-69	9.0%	9.4%
	70-79	5.0%	6.4%
	80+	1.6%	4.2%
	Missing	0.0%	0.0%
Hospitalization Status		AI/AN	State Total
	Hospitalized	3.9%	4.1%
	Not Hospitalized	32.2%	29.8%
	Unknown	63.9%	66.0%



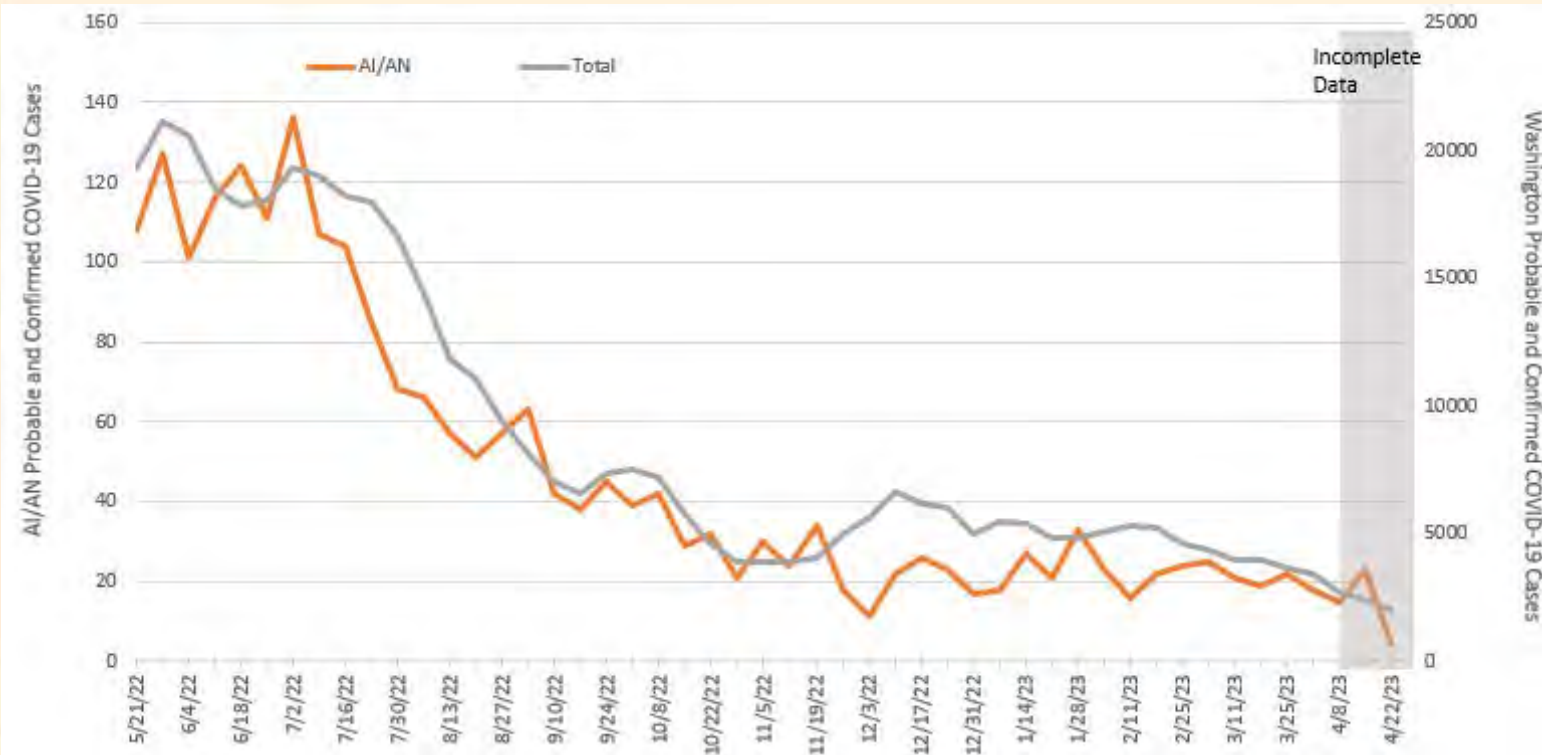
**NORTHWEST PORTLAND AREA
INDIAN HEALTH BOARD**
Indian Leadership for Indian Health



Washington COVID-19 Data

Characteristics of COVID-19 Cases through 4/26

EpiCurve of COVID-19 Cases by Week



Race	N	%
AI/AN	32,361	1.7%
Non-AI/AN	573,463	29.4%
Unknown	1,346,037	69.0%
Total	1,951,861	100.0%

Case Status	AI/AN	State Total
Laboratory Confirmed	83.6%	85.2%
Probable	16.4%	14.8%

Sex	AI/AN	State Total
Male	45.9%	47.1%
Female	51.5%	50.6%
Other	0.0%	0.0%
Missing/Unknown	2.7%	2.3%

Age Group	AI/AN	State Total
0-9	10.3%	9.5%
10-19	17.0%	12.8%
20-29	18.9%	18.0%
30-39	18.6%	18.0%
40-49	13.2%	14.0%
50-59	10.5%	11.5%
60-69	6.8%	8.3%
70-79	3.4%	4.8%
80+	1.3%	3.1%
Missing	0.0%	0.1%

Hospitalization Status	AI/AN	State Total
Hospitalized	5.4%	4.3%
Not Hospitalized	38.6%	26.4%
Unknown	56.0%	69.3%



**NORTHWEST PORTLAND AREA
INDIAN HEALTH BOARD**
Indian Leadership for Indian Health

Data Notes

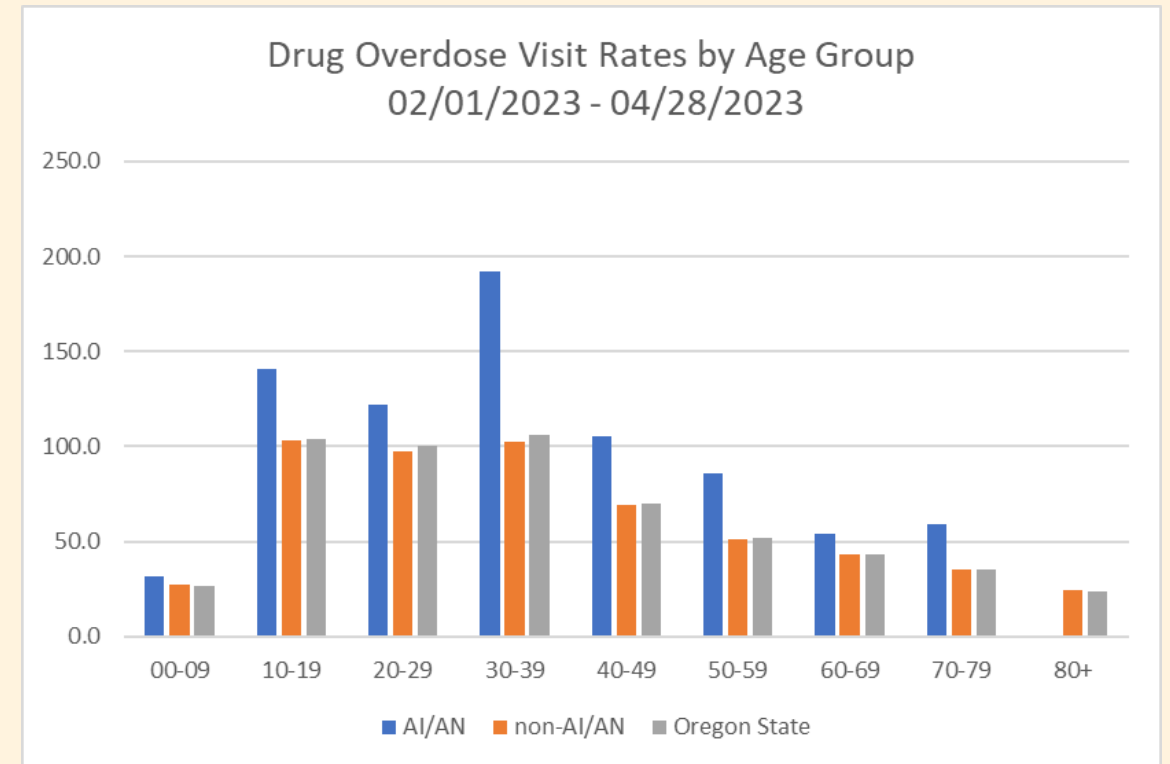
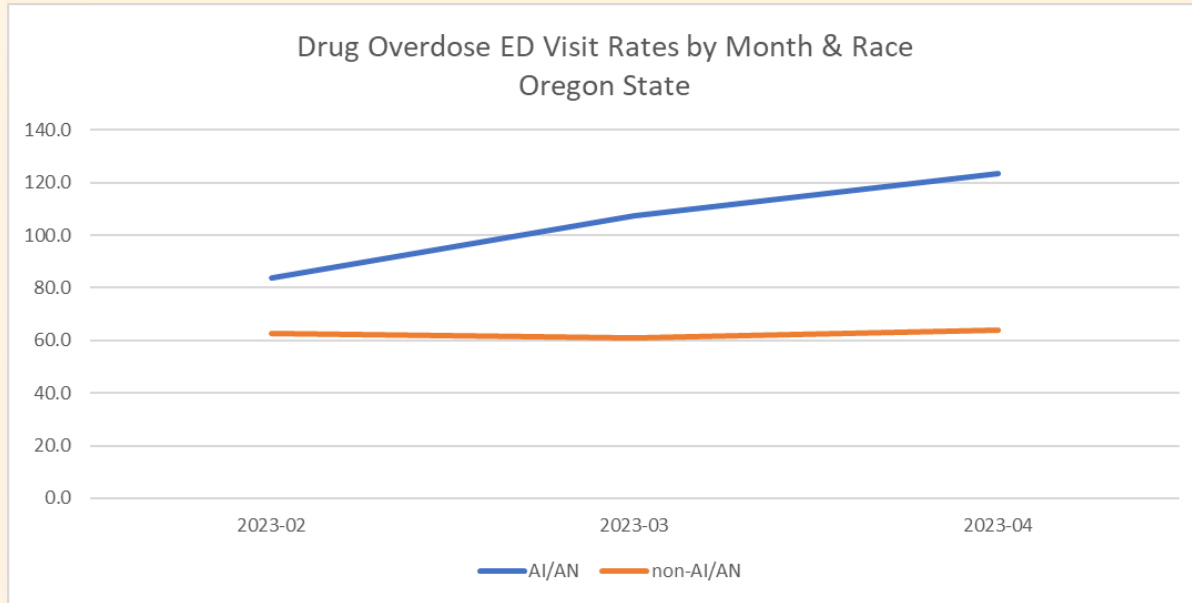
- **Data Source: CDC's COVID-19 Case Surveillance and Vaccination Data, accessed through the HHS Protect System**
- **Data Notes for Case Data:**
 - Data include probable and laboratory confirmed cases of SARS-CoV-2 reported to CDC by state health departments
 - AI/AN cases include all records where the variable race_aian = "Yes"
 - Data are restricted to cases among residents of Idaho, Oregon, and Washington



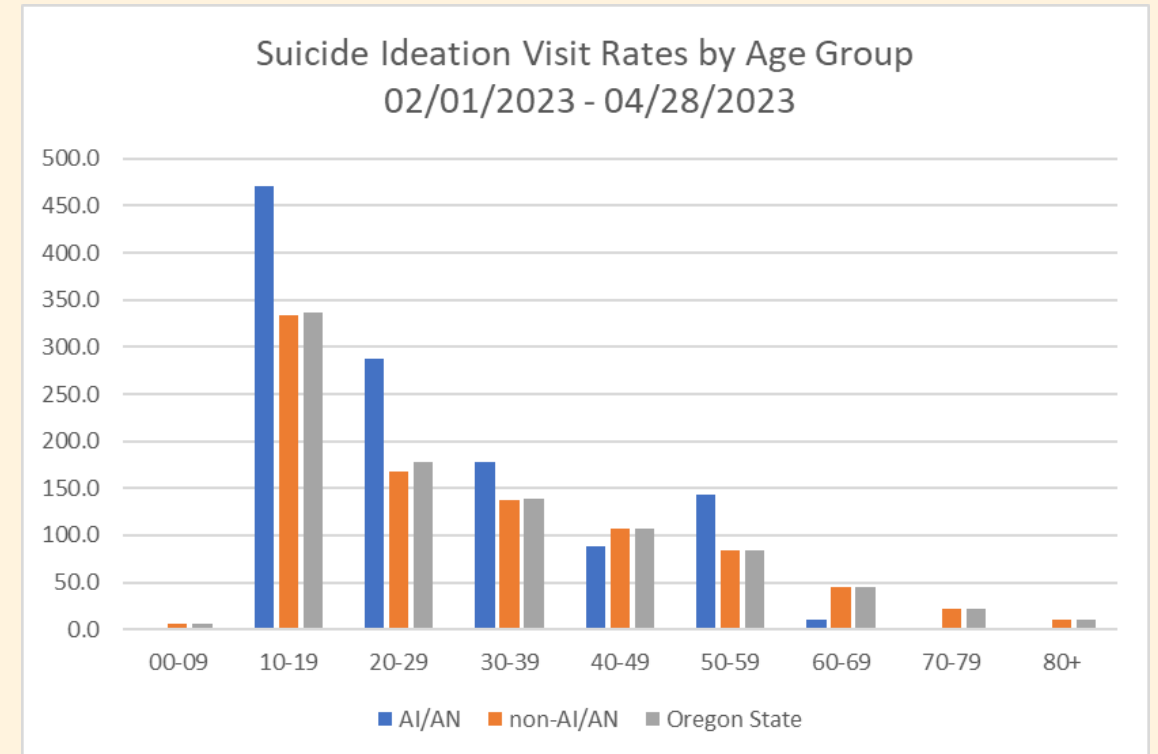
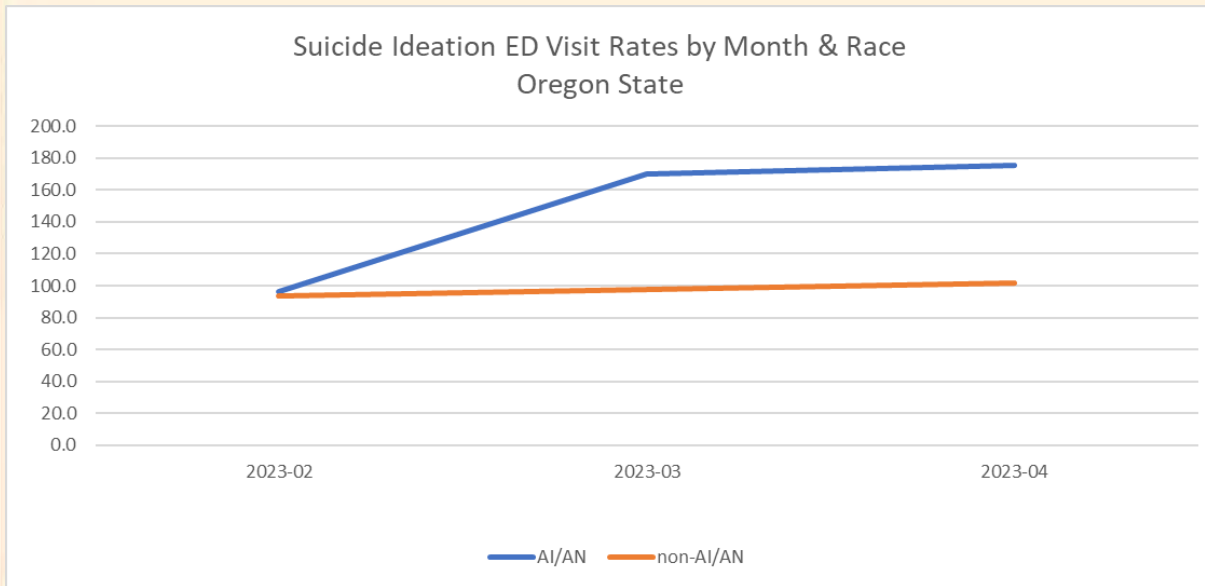
- Idaho: Over the past month, reported cases in the AI/AN population have decreased to between 10 and 20 cases per week, with a similar decline in cases in the total population.
- Oregon: In both the AI/AN population and total population, reported Covid-19 cases continue to plateau.
- Washington: AI/AN Covid-19 cases appeared to fluctuate between 15 and 20 cases per week, while cases in the total population continued a slight decline.



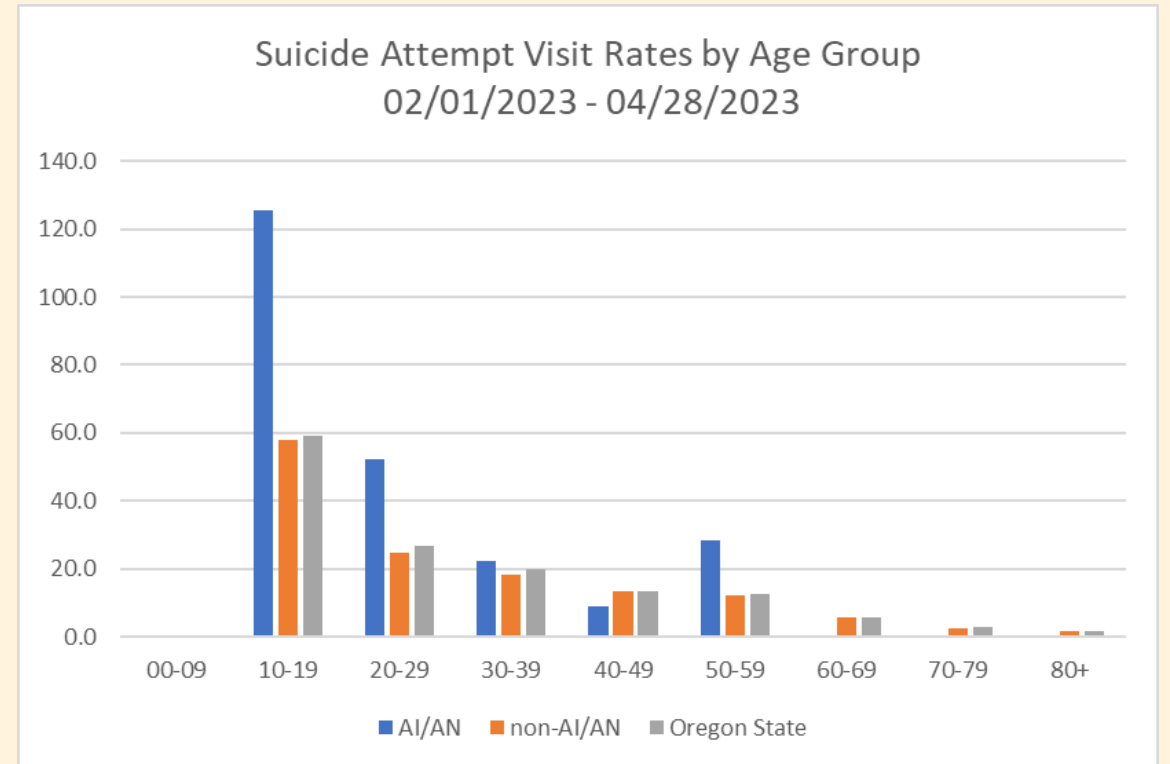
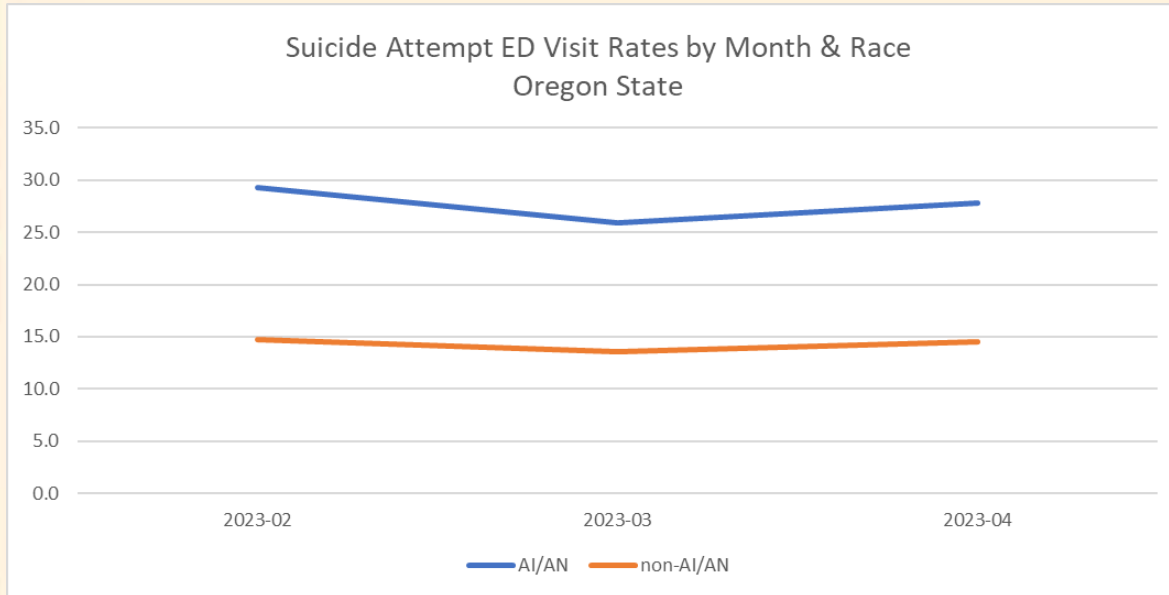
OR Drug Overdose (February – April 2023)



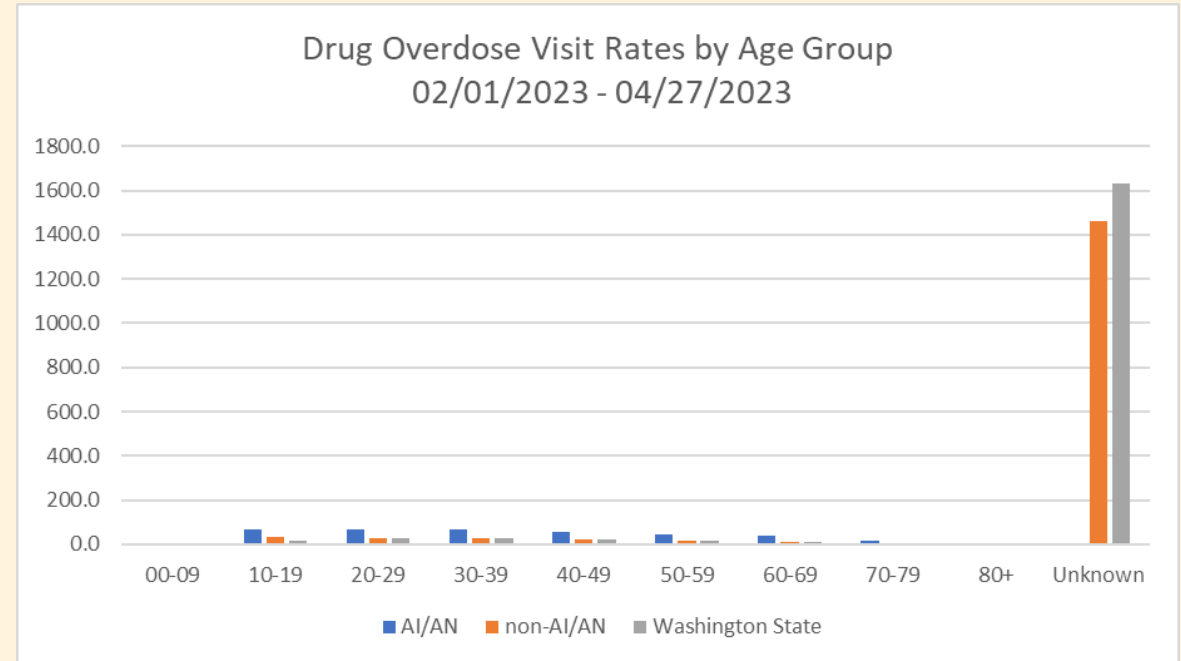
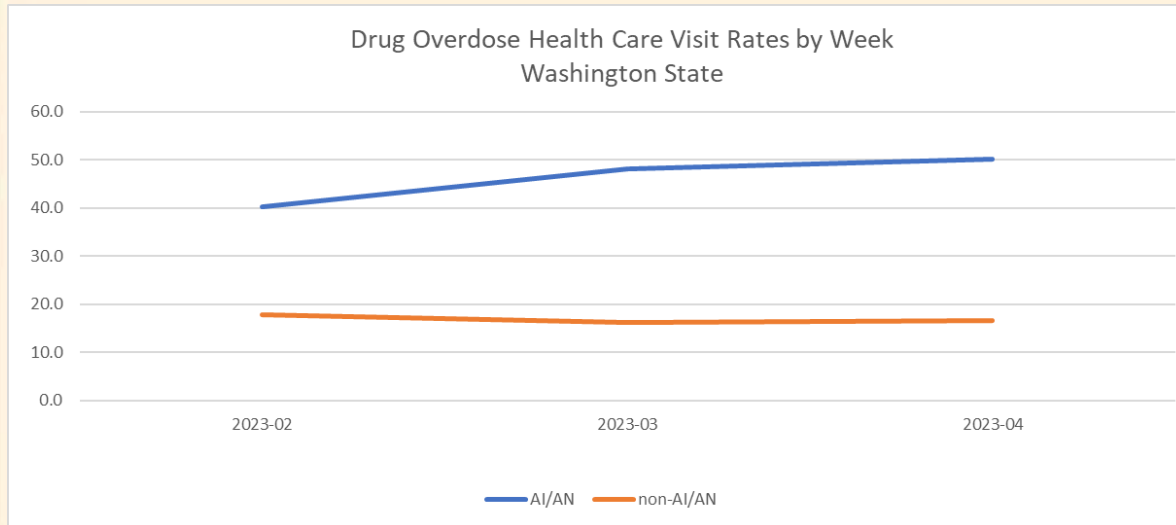
OR Suicidal Ideation February – April 2023



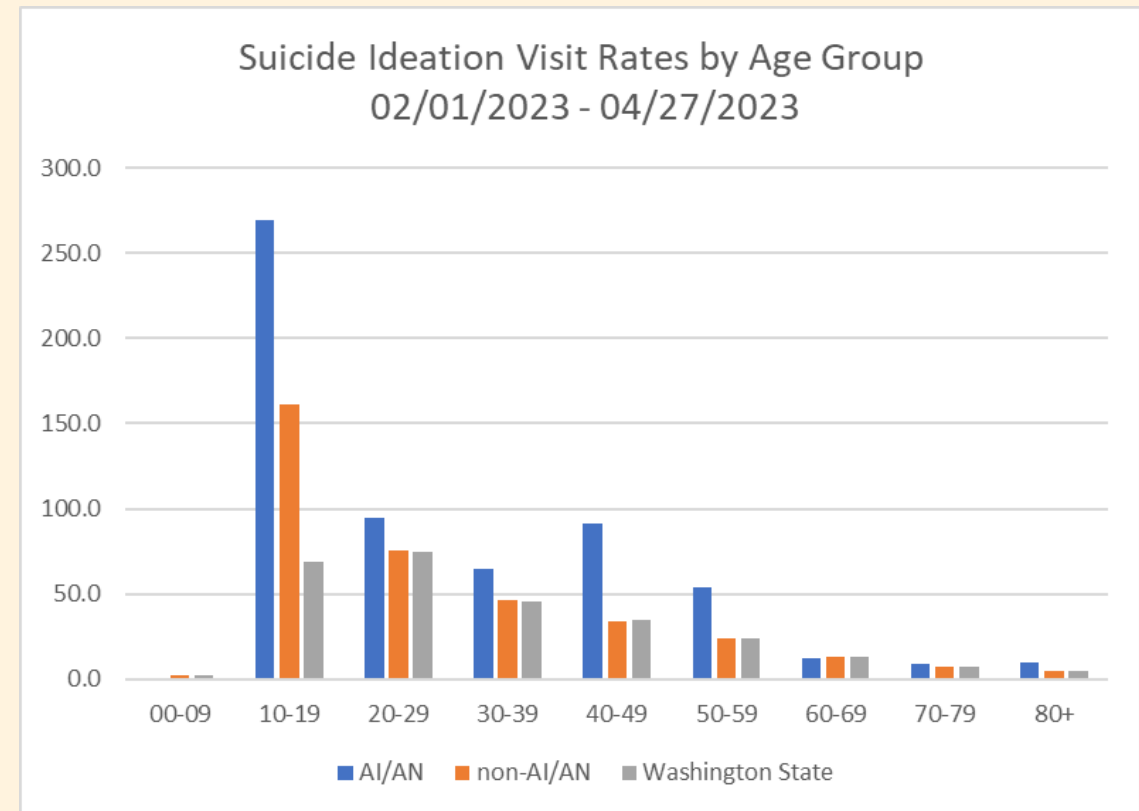
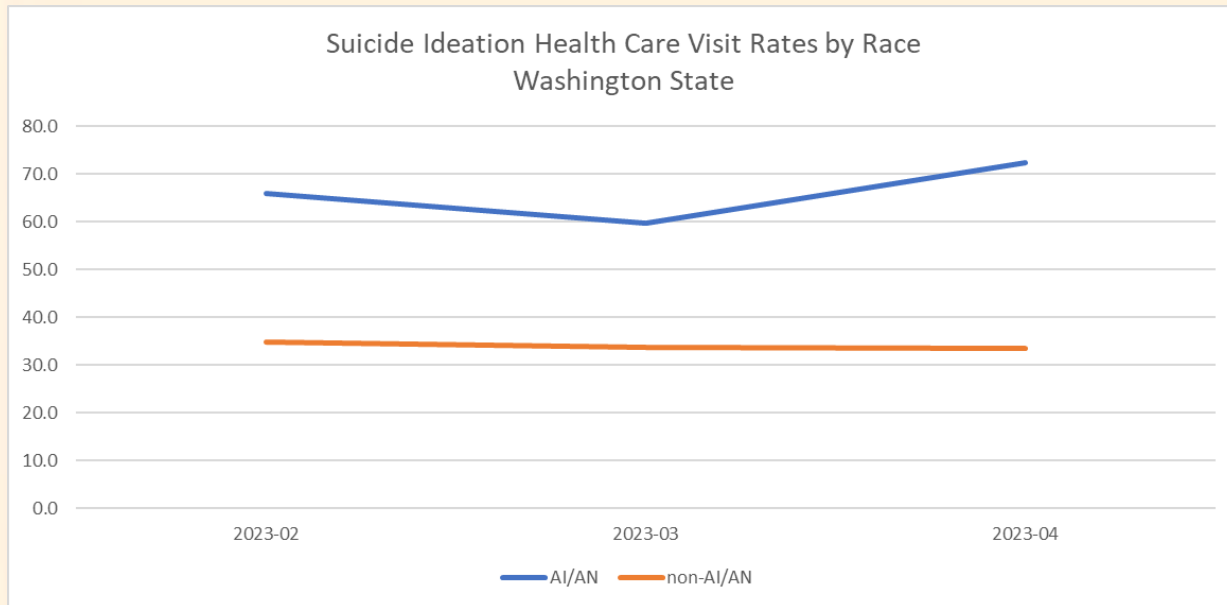
OR Suicide Attempt February – April 2023



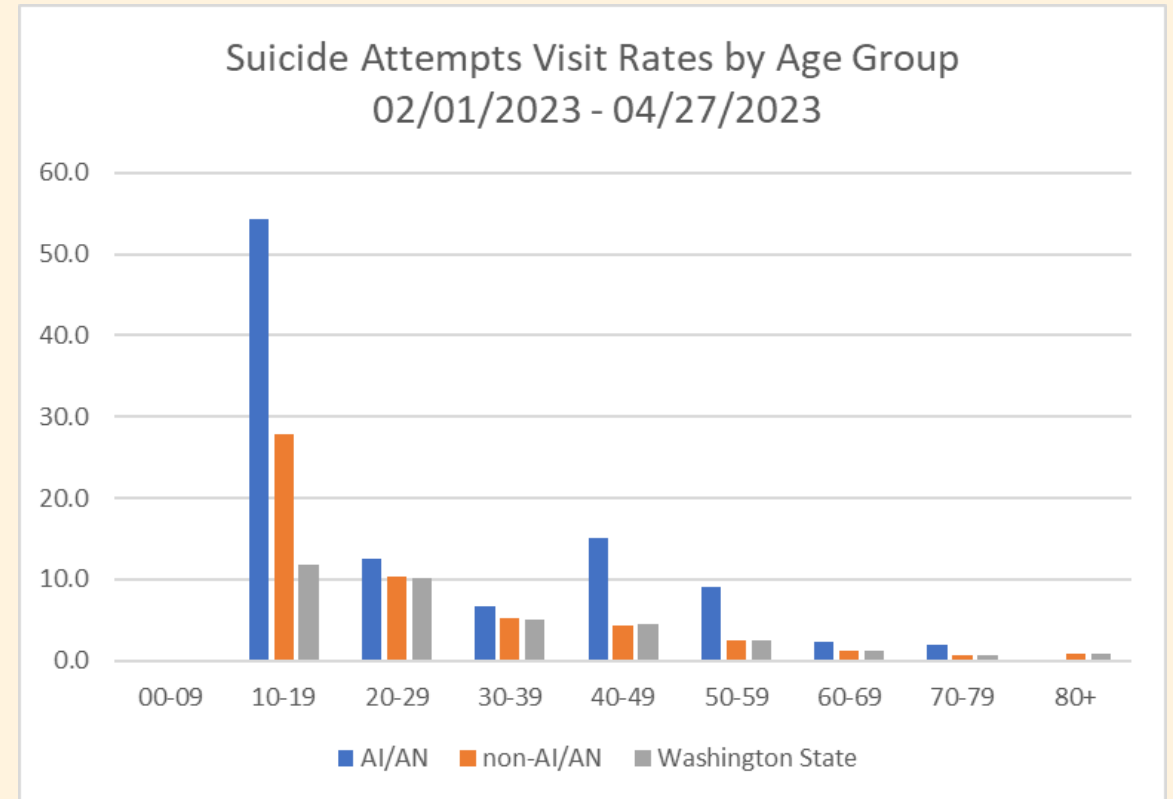
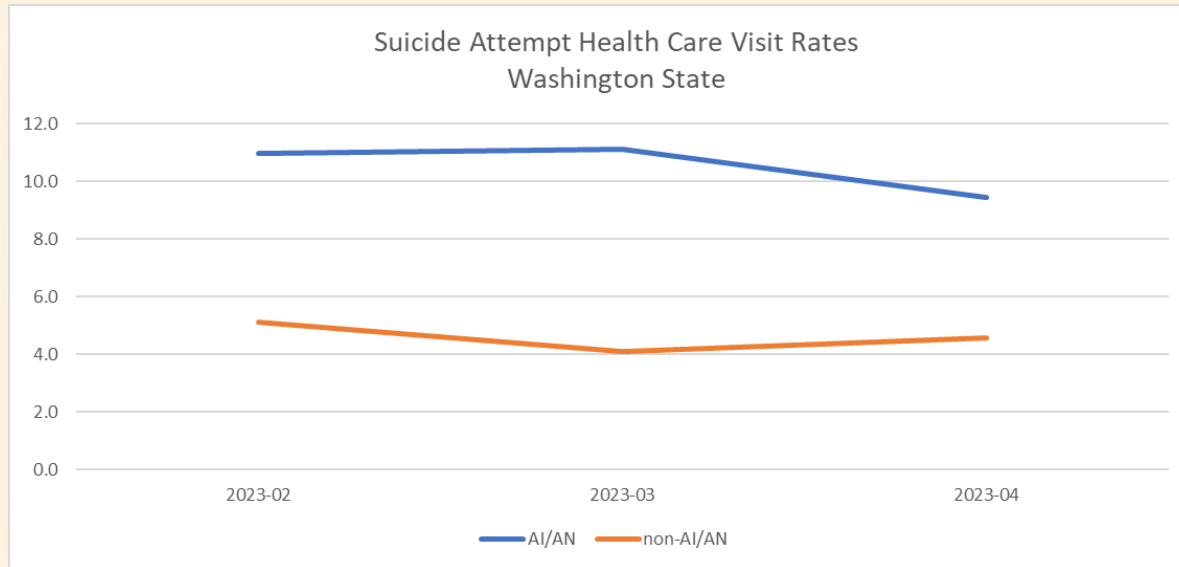
WA Drug Overdose February – April 2023



WA Suicidal Ideation



WA Suicide Attempt February – April 2023



Questions & Comments



NORTHWEST PORTLAND AREA
INDIAN HEALTH BOARD
Indian Leadership for Indian Health

State Partner Updates

- Washington
- Oregon
- Idaho



Questions/Comments



theknowledgallery.com

theknowlesgallery.com

[This Photo](#) by Unknown Author is licensed under [CC BY](#)



NORTHWEST PORTLAND AREA
INDIAN HEALTH BOARD
Indian Leadership for Indian Health