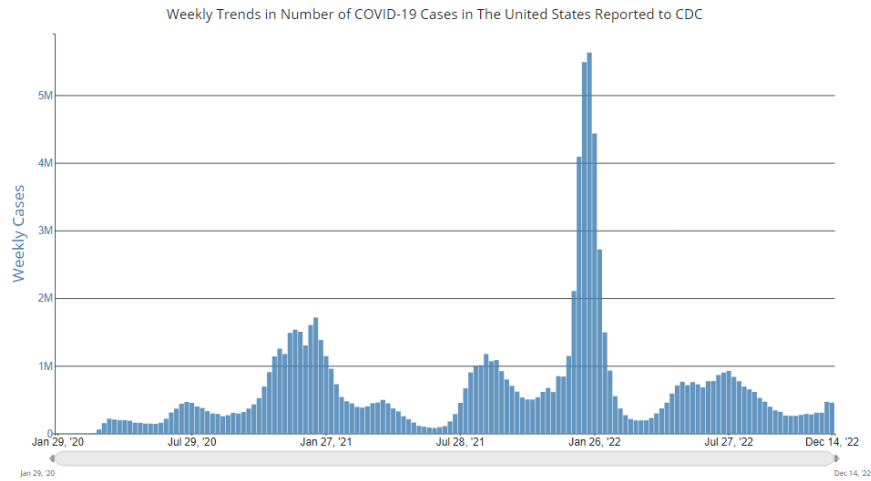


Portland Area IHS Update, week of 12/19/2022

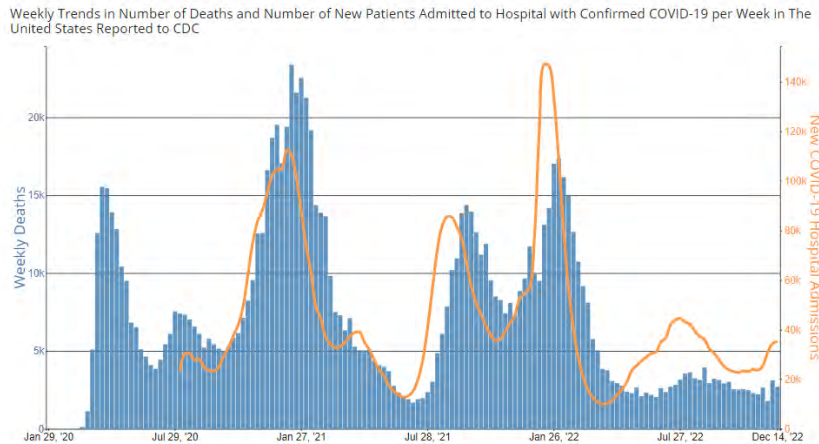
Contents

- COVID 1
- Influenza..... 2
- Respiratory Syncytial Virus (RSV)..... 4
- Projections 4
- COVID Vaccine & Treatment Updates 6

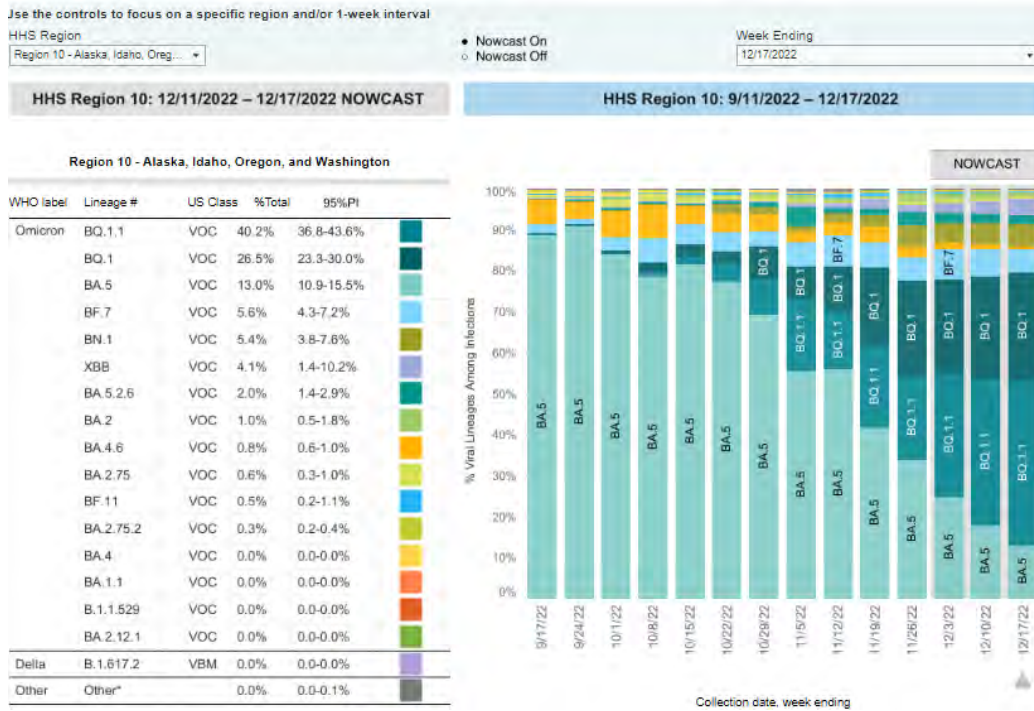
COVID



Weekly cases, deaths and hospitalizations have all hit their lowest point following summer BA.5 variant surges and are beginning to rise as the new BQ.1 and BQ.1.1 variants increase. The states of region 10 are seeing similar patterns.

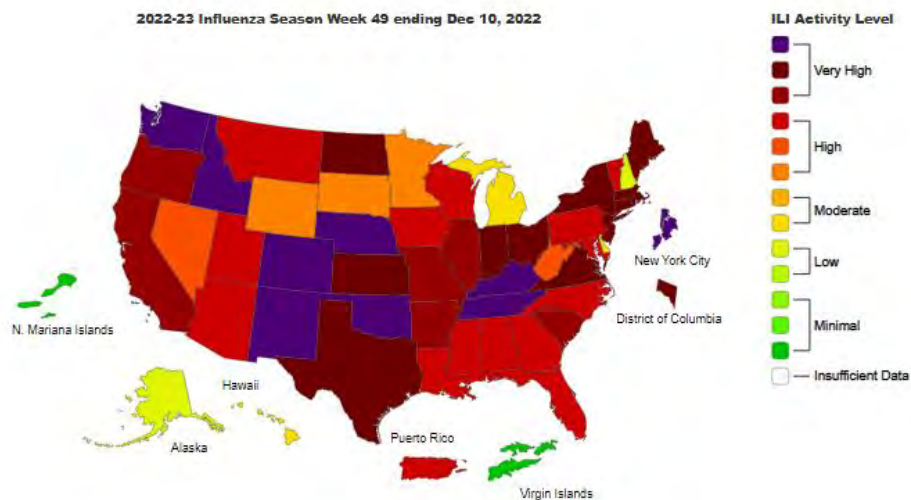


The Community Risk Map for our region has not changed significantly from last week. The latest map can be found at: [CDC COVID Data Tracker: County View](#)

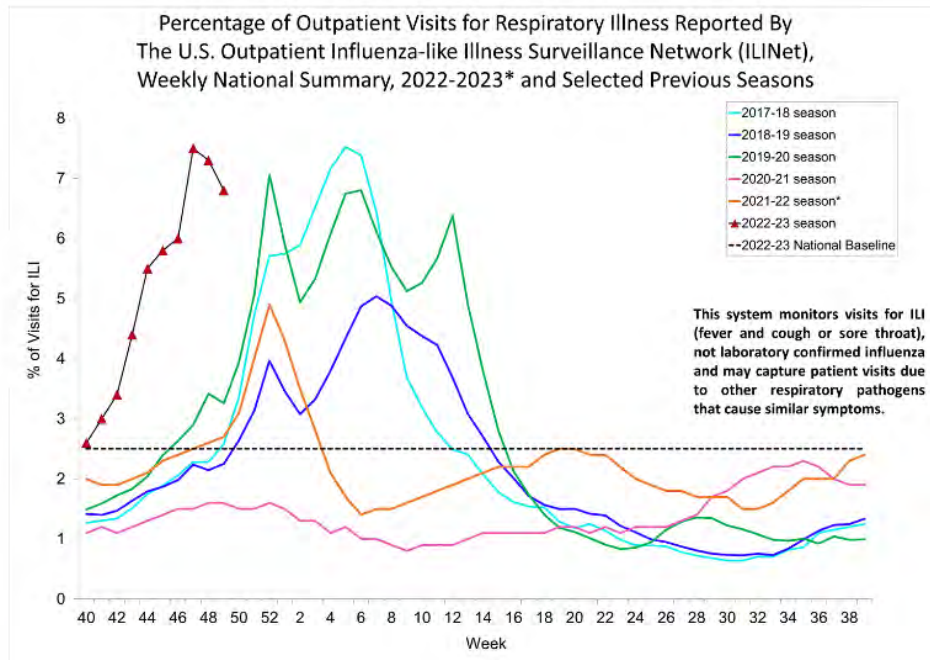


COVID variants continue with the same trends, the majority of isolates are from BQ.1 and BQ.1.1 lineages.

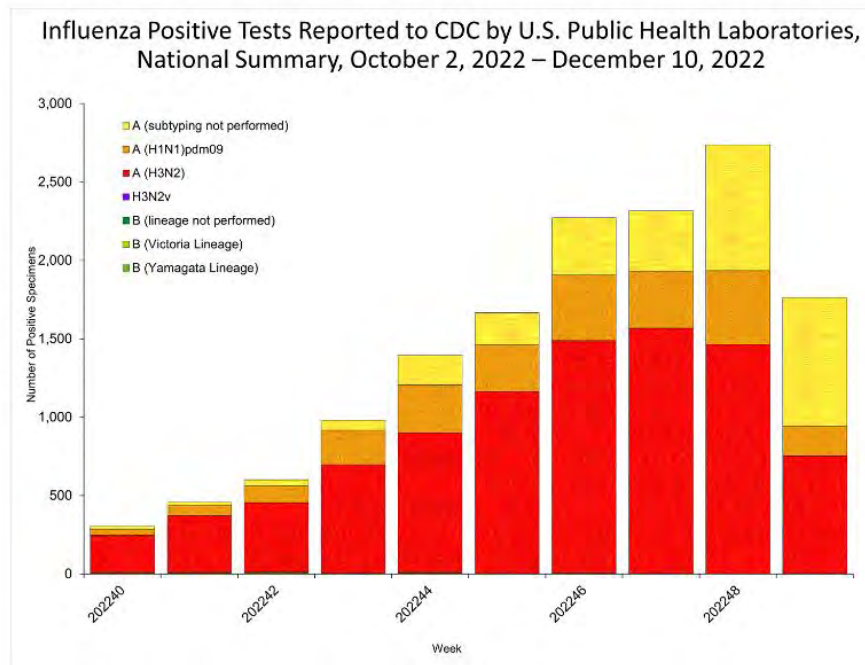
Influenza



Influenza activity continues to increase in the Northwest with WA and ID having the highest levels of activity, followed by Oregon at very high.

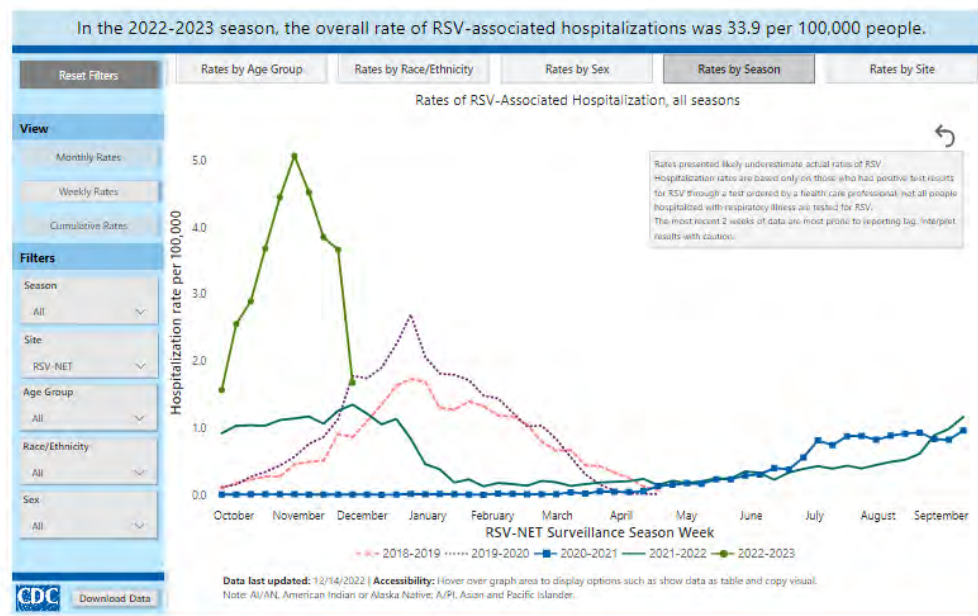


ILI activity has decreased, nationally for the second straight week.



H3N2 continues to be the predominant influenza strain.

Respiratory Syncytial Virus (RSV)

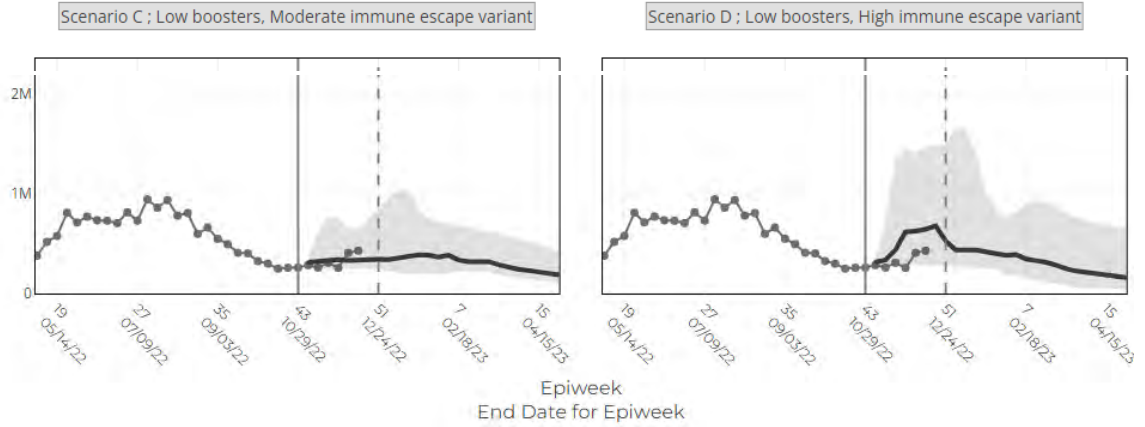


RSV hospitalizations continue to decrease, especially for the 0-4 age group and in American Indian and Alaska Native people.

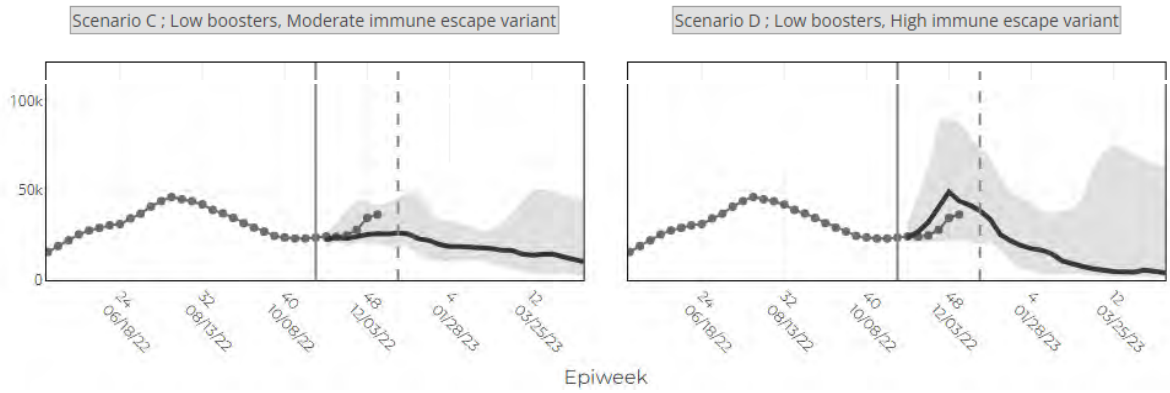
Projections

Below are pooled projections downloaded from [Home - COVID 19 scenario model hub \(covid19scenariomodelinghub.org\)](https://home.covid19scenariomodelinghub.org). These projections are displayed with 50% uncertainty bands around the estimates for cases, hospitalizations and deaths. Two scenarios, both with low booster uptake, are shown. Moderate immune escape scenarios are shown on the left for each, high immune escape scenarios are shown on the right. The degree of immune escape is an estimate of how much protection is acquired through vaccination, including most recent bivalent booster, or recent prior infection. Based on these projections, cases, hospitalizations and deaths could peak this coming week, nationally. In ID, OR and WA, the peak in cases and hospitalizations may have already occurred, with deaths expected to peak the end of this week. At the state level, there is a lot more variability and uncertainty regarding these projections.

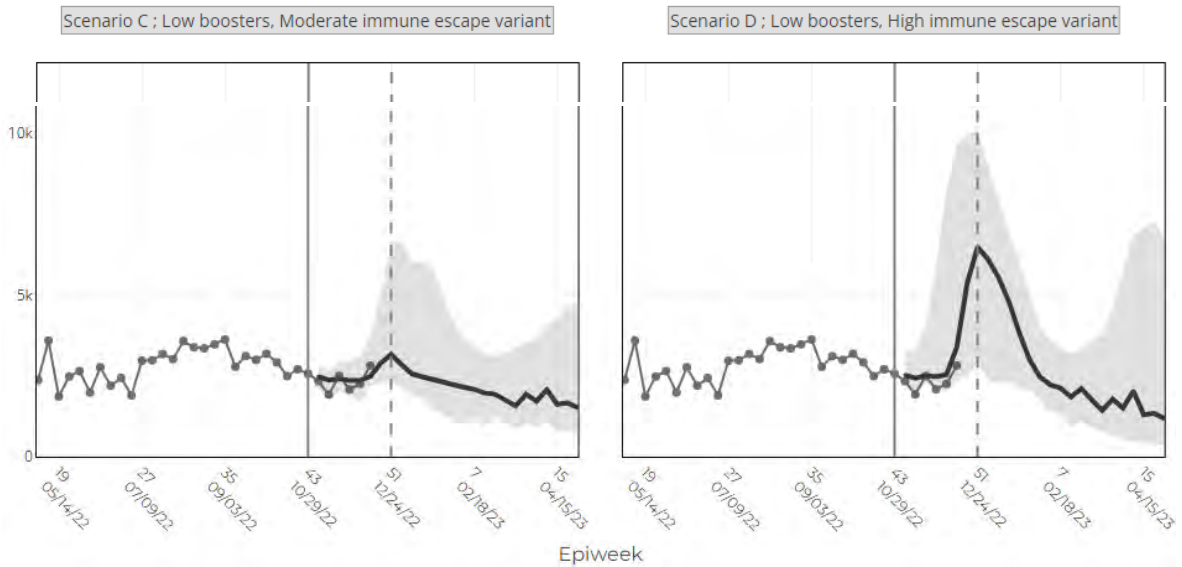
Projected Incident Cases by Epidemiological Week and by Scenario for Round 16 - US
 (- Projection Epiweek; -- Current Week)



Projected Incident Hospitalizations by Epidemiological Week and by Scenario for Round 16 - US
 (- Projection Epiweek; -- Current Week)



Projected Incident Deaths by Epidemiological Week and by Scenario for Round 16 - US
 (- Projection Epiweek; -- Current Week)



COVID Vaccine & Treatment Updates

- As shared last week, the newest guidance from CDC for COVID-19 vaccines can be found at [Interim Clinical Considerations for Use of COVID-19 Vaccines | CDC](#)
- The Clinician Outreach and Communication Activity (COCA) call on the use of Bivalent COVID-19 vaccines for children 6 months to 5 years of age can be found at [Webinar Tuesday, December 13, 2022 - COVID-19 Update: Clinical Guidance and Patient Education for Bivalent COVID-19 Vaccines \(cdc.gov\)](#) the full webinar, transcript and slides are now available.
- New treatment: Kinret® (anakinra) injection for the treatment of COVID-19 in certain hospitalized patients has just received Emergency Use Authorization (EUA) from FDA. An IHS Pharmacy and Therapeutics emerging treatment brief was just published this morning and will be added to the IHS website soon: <https://www.ihs.gov/nptc/covid-19/>. To ensure that you receive all NPTC correspondence, please consider self-enrolling to the IHS National Pharmacy & Therapeutics Committee Listserv. So simple, just click here!: https://www.ihs.gov/listserv/topics/signup/?list_id=183