

# NPAIHB COVID-19 Weekly Update

August 10, 2021

Please sign in using the chat box:

Enter the tribe or organization you are representing  
and names of all people participating with you today



NORTHWEST PORTLAND AREA  
INDIAN HEALTH BOARD  
*Indian Leadership for Indian Health*

# Information for Today's Call

## Agenda

- Welcome & Introduction: Chairman Lewis
- NPAIHB COVID-19 Situation Report: Celeste Davis
- Data Update: Victoria Warren-Mears
- Indian Health Service Update: Dean Seyler
- Legislative and Policy Update: Candice Jimenez and Liz Coronado
- State Partner Updates:
  - Washington: Lou Schmitz, Tamara Fife, Jessie Dean, and Tam Lutz
  - Oregon: Julie Johnson, Candice Jimenez, and Sue Steward
  - Idaho: Joyce Broadsword, Liz Coronado, and Jessica Leston

## Guidelines

- Please place yourself on mute unless speaking
- Sign in, using chat box, with your tribe/organization and names of all participants
- Use the chat box for questions, for Q&A after updates and announcements



**NORTHWEST PORTLAND AREA  
INDIAN HEALTH BOARD**  
*Indian Leadership for Indian Health*

# NPAIHB COVID-19 Situation Report

Celeste Davis



NORTHWEST PORTLAND AREA  
INDIAN HEALTH BOARD  
*Indian Leadership for Indian Health*

# C-19 Emergency Response - NPAIHB Situation Report: 8/10/21

## *The Kids in America*

- **Pandemic of the unvaccinated**
  - Obligation to protect kids – get vaccinated and mask up!
- **93,824 child COVID-19 cases reported between July 29 and August 5**
  - 15% of the weekly reported cases in the U.S.
- Tie vaccinations to school physicals, update all immunizations
- NPAIHB working with youth and young adults on messaging
- NPAIHB can conduct environmental assessments of schools, child care

*Please let us know if you have unmet medical or public health needs!*



NORTHWEST PORTLAND AREA  
INDIAN HEALTH BOARD  
*Indian Leadership for Indian Health*



NPAIHB

Indian Leadership for Indian Health



INDIAN + COUNTRY  
**ECHO**

## Upcoming Indian Country ECHO telehealth opportunities

- **Trans & Gender-Affirming Care ECHO** – 2<sup>nd</sup> and 4<sup>th</sup> Monday of every month at 2pm ET
  - Monday, August 9<sup>th</sup> at 2pm ET
  - To learn more and join: <https://www.indiancountryecho.org/program/trans-and-gender-affirming-care/>
- **CHAP ECHO Collaborative** – 2<sup>nd</sup> Tuesday of every month at 9am PT
  - Tuesday, August 10<sup>th</sup> at 9am PT
  - To learn more and join: <https://www.indiancountryecho.org/program/chap-echo-learning-collaborative/>



NPAIHB

*Indian Leadership for Indian Health*



INDIAN + COUNTRY

ECHO

## Upcoming Indian Country ECHO telehealth opportunities

- **Peer Recovery Specialist ECHO** – 2<sup>nd</sup> and 4<sup>th</sup> Wednesday of every month at 12pm PT:
  - Tuesday, August 11<sup>th</sup> at 12pm PT
  - To learn more and join: <https://www.indiancountryecho.org/program/peer-recovery-specialist/>
- **Diabetes ECHO** – 2<sup>nd</sup> Thursday of every month at 12pm PT
  - Thursday, August 12<sup>th</sup> at 12pm PT
  - To learn more and join: <https://www.indiancountryecho.org/program/diabetes/>



INDIAN + COUNTRY  
ECHO

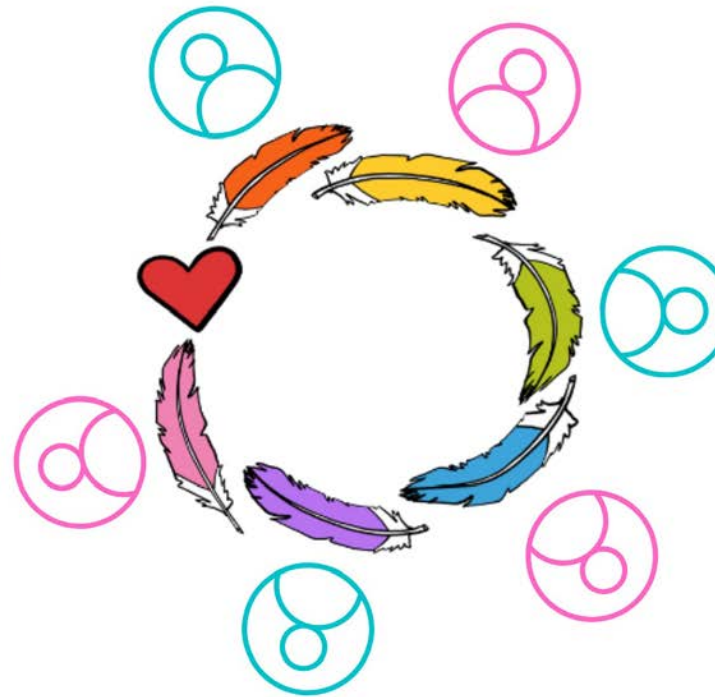
# TALKING CIRCLE PROJECT:

## INDIGENOUS & GENDER-DIVERSE HEALTH

A RESEARCH INITIATIVE BY  
THE NORTHWEST PORTLAND  
AREA INDIAN HEALTH BOARD  
& THE PATHS (RE)MEMBERED  
PROJECT

### ARE YOU

- NATIVE AND  
TRANS/GENDER-DIVERSE
- AT LEAST 18 YEARS OF  
AGE
- WILLING TO PARTICIPATE IN  
8 TALKING CIRCLES
- FROM A TRIBAL NATION IN  
WASHINGTON, OREGON, OR  
IDAHO & LIVING WITHIN ONE  
OF THOSE THREE STATES



CIRCLES WILL BE HELD EACH  
MONDAY, FOR EIGHT WEEKS,  
BEGINNING ON SEPTEMBER, 27TH,  
2021

IF INTERESTED, VISIT:

[HTTP://BIT.LY/CIRCLEPROJECT](http://bit.ly/circleproject)

PARTICIPANTS  
WILL BE  
COMPENSATED  
FOR THEIR TIME

# Data Update

Victoria Warren-Mears



NORTHWEST PORTLAND AREA  
INDIAN HEALTH BOARD  
*Indian Leadership for Indian Health*

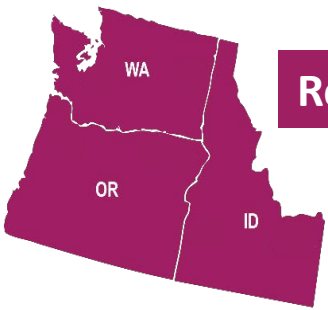


# COVID-19 Case Surveillance Data Summary

Data pulled on 8/9/2021

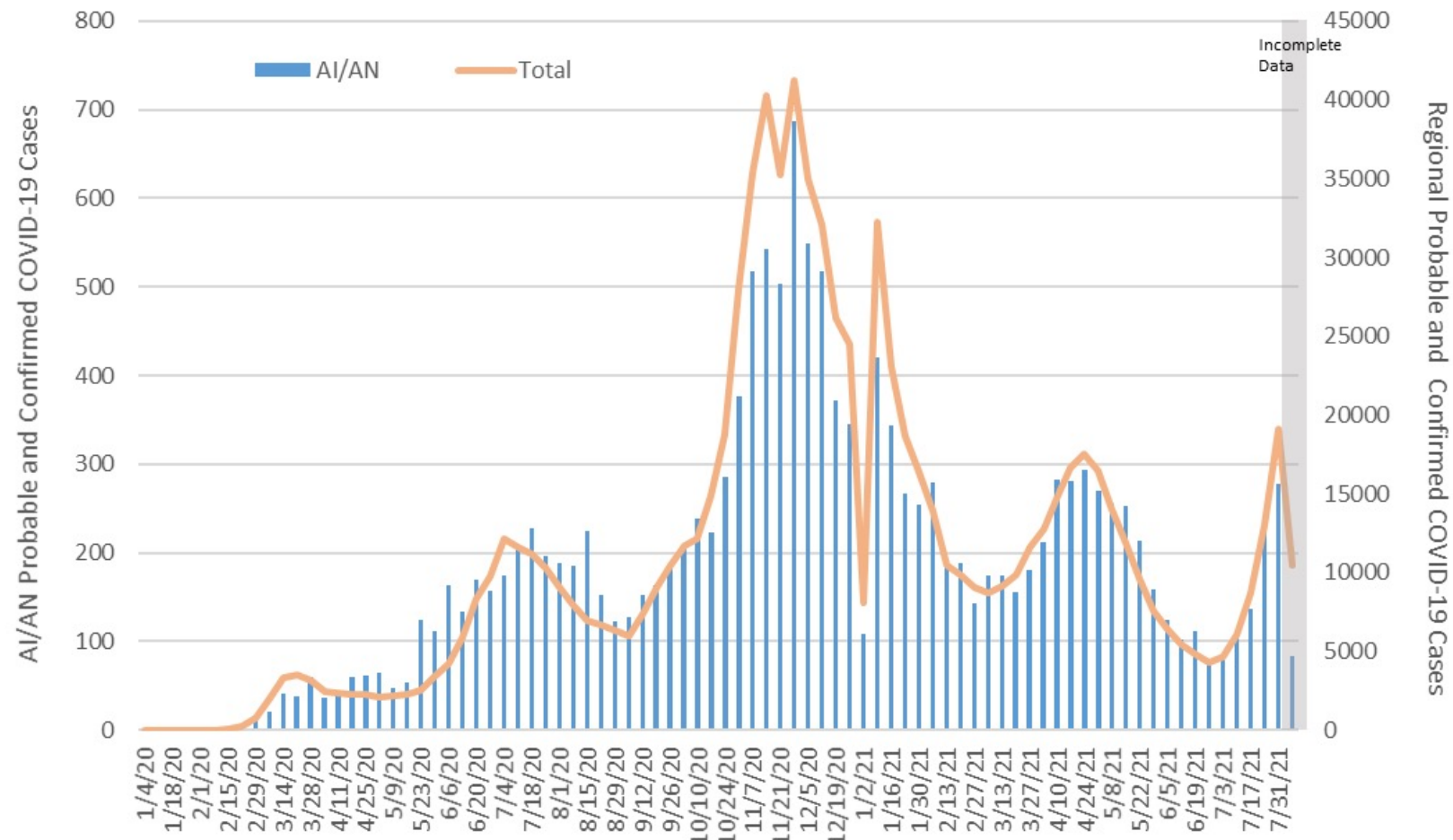


NORTHWEST PORTLAND AREA  
INDIAN HEALTH BOARD  
*Indian Leadership for Indian Health*



## Regional COVID-19 Data

EpiCurve of COVID-19 Cases by Week



## Characteristics of COVID-19 Cases through 8/7

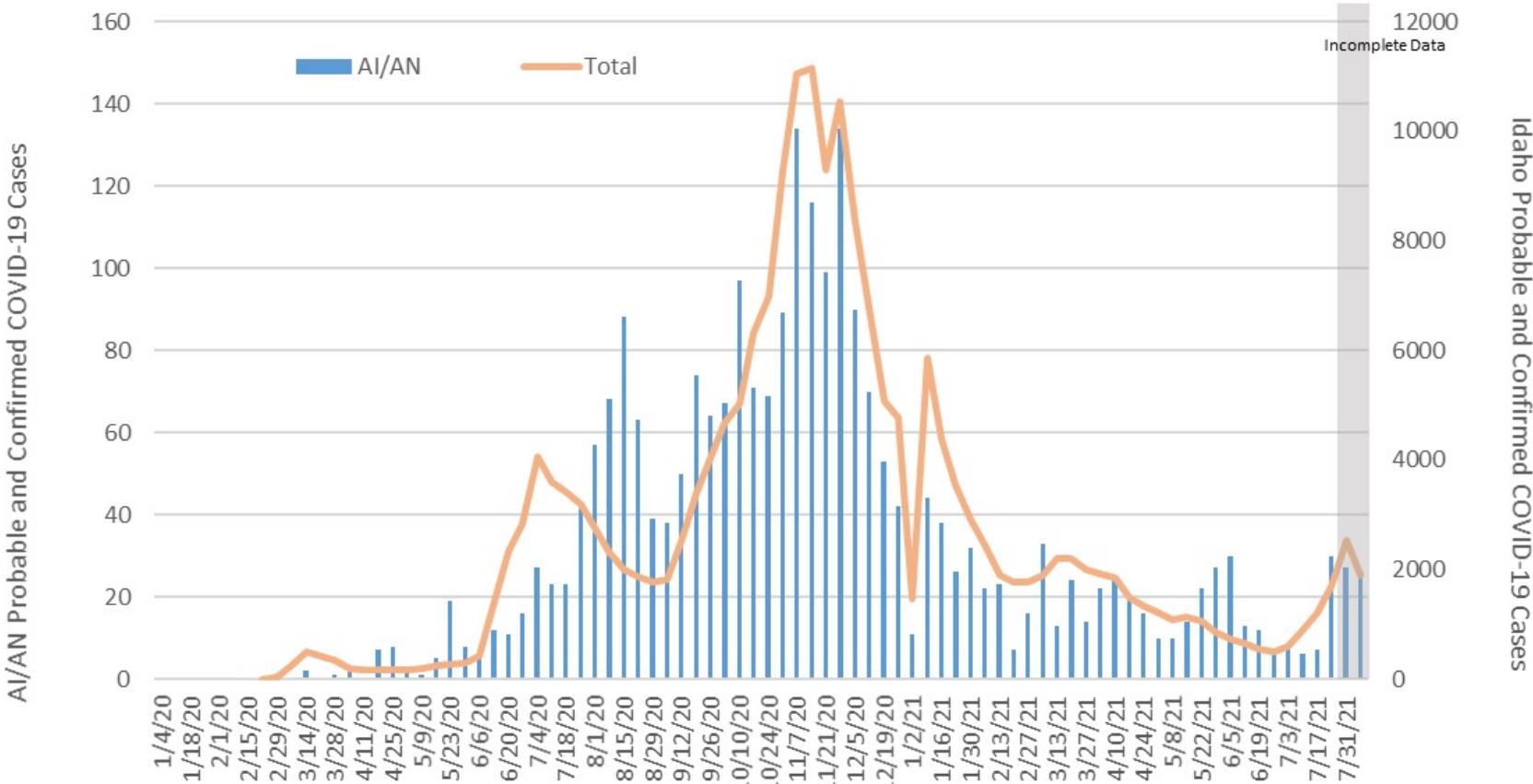
Race		N	%
	AI/AN	15,503	1.7%
	Non-AI/AN	554,261	60.3%
	Unknown	349,426	38.0%
	Total	919,190	100.0%
Case Status		AI/AN	State Total
	Laboratory Confirmed	91.6%	89.9%
	Probable	8.4%	10.1%
Sex		AI/AN	State Total
	Male	50.8%	48.1%
	Female	9.7%	49.9%
	Other	16.5%	0.0%
	Missing/Unknown	23.0%	2.0%
Age Group		AI/AN	State Total
	0-9	7.8%	5.3%
	10-19	14.2%	12.0%
	20-29	20.8%	20.9%
	30-39	18.7%	17.8%
	40-49	14.7%	15.1%
	50-59	11.5%	12.7%
	60-69	7.6%	8.5%
	70-79	3.3%	4.6%
	80+	1.3%	3.1%
	Missing	0.1%	0.0%
Hospitalization Status		AI/AN	State Total
	Hospitalized	6.7%	5.1%
	Not Hospitalized	80.6%	81.2%
	Unknown	12.6%	13.5%



# Idaho COVID-19 Data

## Characteristics of COVID-19 Cases through 8/7

EpiCurve of COVID-19 Cases by Week

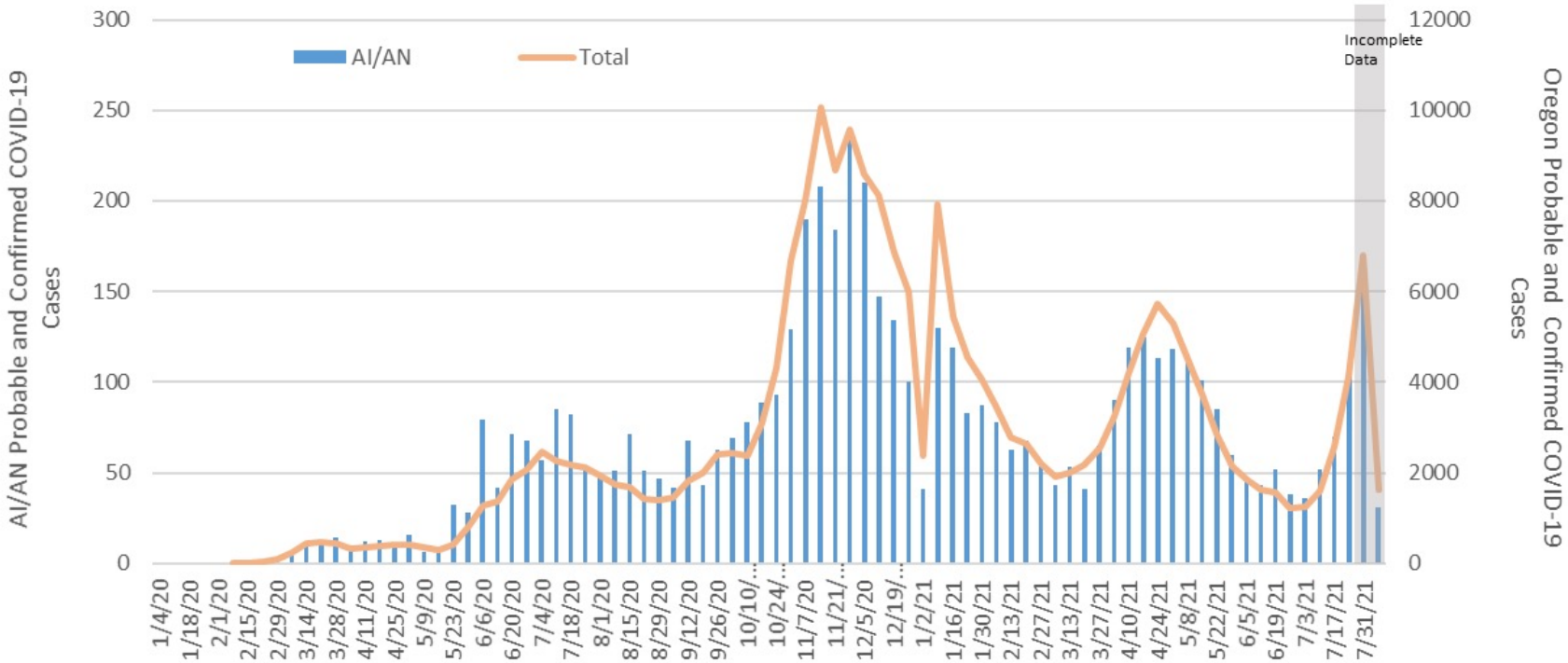


Race		N	%
	AI/AN	2,521	1.2%
	Non-AI/AN	135,802	66.6%
	Unknown	65,555	32.2%
	Total	203,878	100.0%
Case Status		AI/AN	State Total
	Laboratory Confirmed	83.1%	79.9%
	Probable	16.9%	20.1%
Sex		AI/AN	State Total
	Male	41.7%	47.6%
	Female	56.4%	51.7%
	Other	0.0%	0.0%
	Missing/Unknown	1.9%	0.7%
Age Group		AI/AN	State Total
	0-9	6.8%	3.7%
	10-19	15.9%	12.0%
	20-29	18.9%	20.5%
	30-39	18.5%	16.7%
	40-49	14.1%	15.3%
	50-59	10.5%	13.0%
	60-69	9.0%	9.6%
	70-79	4.3%	5.6%
	80+	2.0%	3.5%
	Missing	0.0%	0.0%
Hospitalization Status		AI/AN	State Total
	Hospitalized	6.3%	3.7%
	Not Hospitalized	62.7%	67.0%
	Unknown	29.8%	28.5%



# Oregon COVID-19 Data

EpiCurve of COVID-19 Cases by Week



## Characteristics of COVID-19 Cases through 8/7

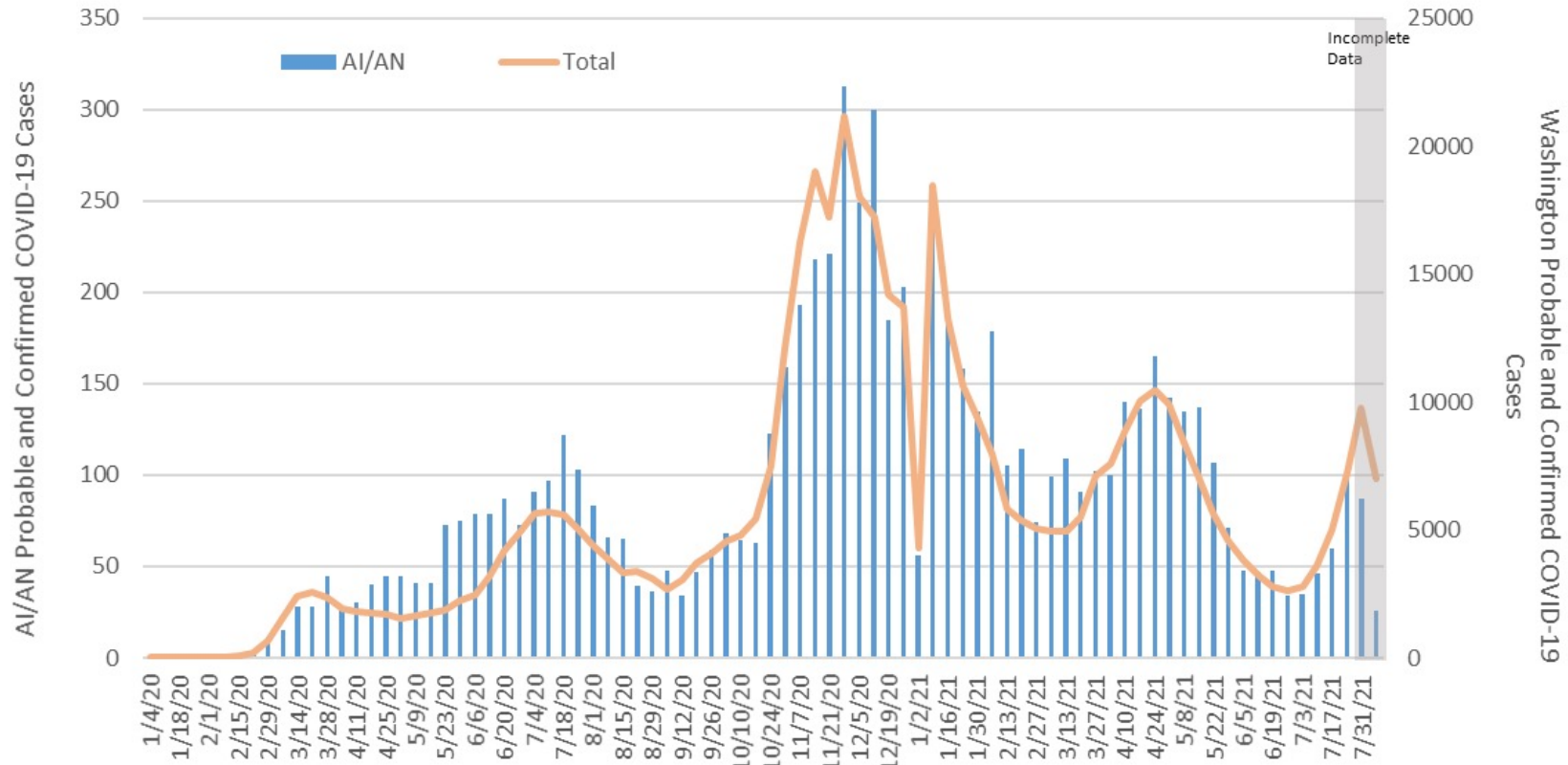
Race		N	%
	AI/AN	5,548	2.4%
	Non-AI/AN	178,658	78.8%
	Unknown	42,467	18.7%
	Total	226,673	100.0%
Case Status		AI/AN	State Total
	Laboratory Confirmed	96.5%	96.4%
	Probable	3.5%	3.6%
Sex		AI/AN	State Total
	Male	54.0%	48.2%
	Female	0.0%	50.7%
	Other	45.9%	0.0%
	Missing/Unknown	0.1%	1.1%
Age Group		AI/AN	State Total
	0-9	7.8%	5.2%
	10-19	14.2%	11.9%
	20-29	20.4%	20.9%
	30-39	18.7%	17.5%
	40-49	15.1%	15.2%
	50-59	11.9%	12.7%
	60-69	7.3%	8.5%
	70-79	3.3%	4.9%
	80+	1.2%	3.3%
	Missing	0.0%	0.0%
Hospitalization Status		AI/AN	State Total
	Hospitalized	7.2%	5.4%
	Not Hospitalized	71.3%	65.7%
	Unknown	21.6%	29.0%



# Washington COVID-19 Data

## Characteristics of COVID-19 Cases through 8/7

EpiCurve of COVID-19 Cases by Week



Race		N	%
	AI/AN	7,434	1.5%
	Non-AI/AN	239,801	49.1%
	Unknown	241,404	49.4%
	Total	488,639	100.0%
Case Status		AI/AN	State Total
	Laboratory Confirmed	90.8%	91.1%
	Probable	9.2%	8.9%
Sex		AI/AN	State Total
	Male	51.4%	48.2%
	Female	0.8%	48.8%
	Other	47.7%	0.0%
	Missing/Unknown	0.2%	2.9%
Age Group		AI/AN	State Total
	0-9	8.2%	6.0%
	10-19	13.6%	12.0%
	20-29	21.8%	21.1%
	30-39	18.9%	18.4%
	40-49	14.6%	15.0%
	50-59	11.5%	12.5%
	60-69	7.2%	8.1%
	70-79	3.0%	4.1%
	80+	1.1%	2.8%
	Missing	0.1%	0.1%
Hospitalization Status		AI/AN	State Total
	Hospitalized	6.4%	5.6%
	Not Hospitalized	93.6%	94.4%
	Unknown	0.0%	0.0%

# Data Notes

- **Data Source:** CDC's COVID-19 Case Surveillance Data, accessed through the HHS Protect System
- **Data Notes:**
  - Data include probable and laboratory confirmed cases of SARS-CoV-2 reported to CDC by state health departments
  - AI/AN cases include all records where the variable race\_aian = "Yes"
  - Data are restricted to cases among residents of Idaho, Oregon, and Washington





Portland area 3<sup>rd</sup> highest case identification for time period ending August 7, 2021.

(Phoenix area not counted due to data correction)

Data source:

<https://www.ihs.gov/coronavirus/>



**NORTHWEST PORTLAND AREA  
INDIAN HEALTH BOARD**  
*Indian Leadership for Indian Health*

## COVID-19 Cases by IHS Area

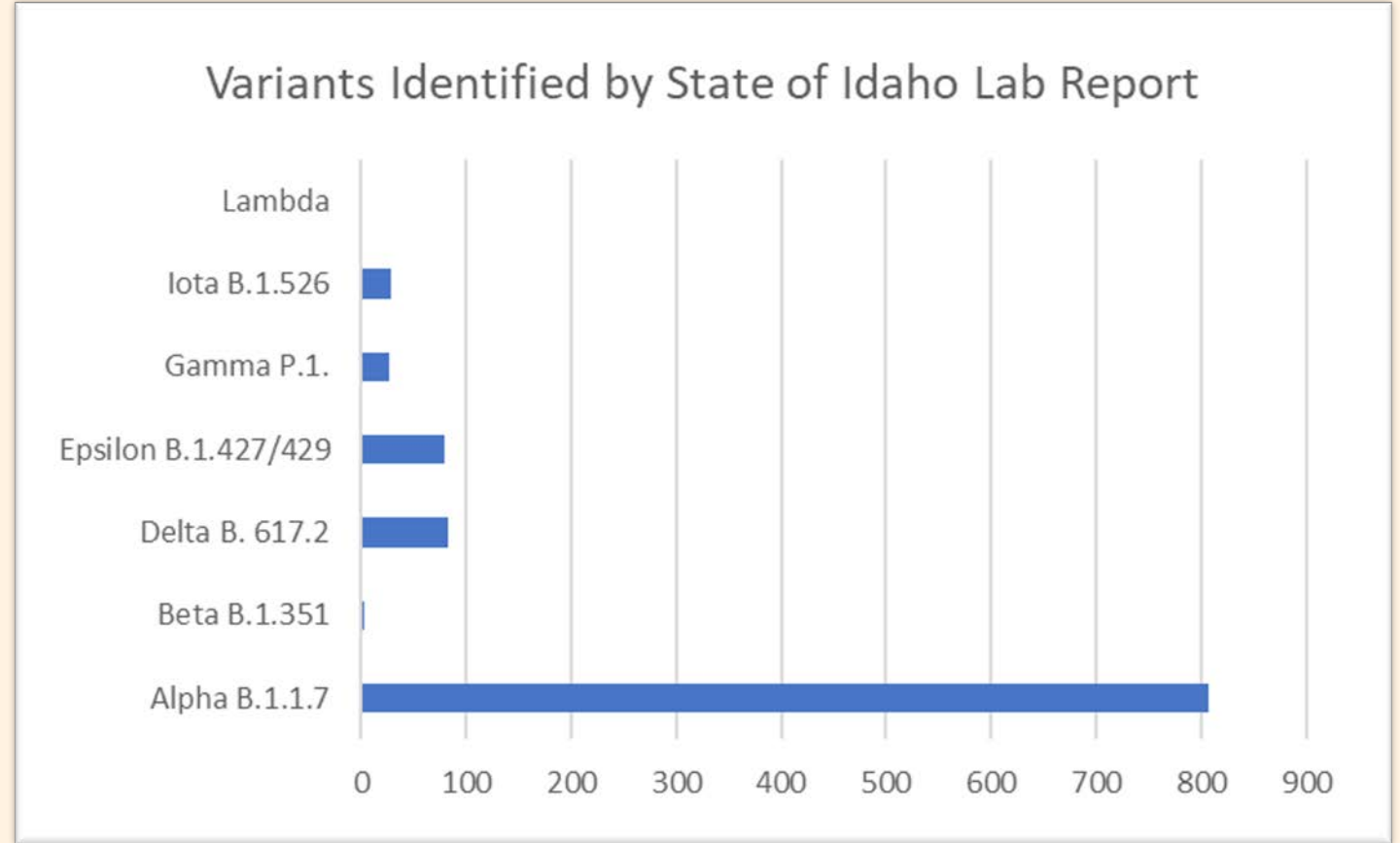
Data are reported from IHS, tribal, and urban Indian organization facilities, though reporting by tribal and urban programs is voluntary; reflect cases reported to the IHS through 11:59 pm on August 7, 2021.

IHS Area	Tested	Positive	Negative	Cumulative percent positive *	7-day rolling average positivity *
Alaska	687,142	13,750	586,164	2.3%	4.6%
Albuquerque	102,668	8,460	73,163	10.4%	5.2%
Bemidji	182,117	12,225	167,020	6.8%	8.2%
Billings	107,488	7,611	96,544	7.3%	3.8%
California	95,925	9,085	83,073	9.9%	11.1%
Great Plains	157,431	14,615	142,299	9.3%	4.5%
Nashville	89,773	7,047	81,490	8.0%	14.4%
Navajo	280,623	33,346	198,606	14.4%	9.5%
Oklahoma City	572,985	67,291	501,477	11.8%	17.5%
Phoenix*	187,661	23,790	163,105	12.7%	14.1%
Portland	136,489	8,954	127,093	6.6%	12.5%
Tucson	31,620	2,921	28,542	9.3%	8.0%
<b>TOTAL</b>	<b>2,631,922</b>	<b>209,095</b>	<b>2,248,576</b>	<b>8.5%</b>	<b>10.3%</b>

\* Phoenix Area tested; positive and negative tests decreased due to data reconciliation

# Key Points from Idaho

- As of 8/9 149 ICU beds are available in Idaho and 540 ventilators the number of available beds has increased by 23 in the last two weeks and the number of ventilators available has decreased by 16.





# Key Points from Oregon

- Total emergency department visits in Oregon continue to steadily increase for the total population. AI/AN ED visits fluctuate from week to week, but have also shown an overall increase over the past several months.
- AI/AN and total ED visits with a COVID diagnosis have risen sharply over the past 4 weeks. The AI/AN COVID visit rate increased by 167% and the total visit rate increased by 264%. Visits rates for COVID-like illness have followed a similar upward trend.
- AI/AN ED visits rates for pneumonia increased sharply for three weeks, and then dropped over the past week. Pneumonia ED visit rates for the total population increased by 27% over the past four weeks.
- ED visit rates for influenza-like illness in the total population appear to be increasing over time.
- ED visit rates for suspected vaccine adverse events remain low for the AI/AN population; there have been <5 suspected VAE visits total over the past 5 weeks. The rate of suspected VAE visits in the total population has decreased over the past four months.
- AI/AN ED visit rates for suicidal ideation over the past 4 weeks appear elevated compared to rates in the previous month.



# Key Points from Washington

- Total health care visits in Washington have increased slightly over the past two weeks for both AI/AN and the total state population.
- AI/AN and total health care visits with a COVID diagnosis have risen sharply over the past 4 weeks. The AI/AN COVID visit rate increased by 130% and the total visit rate increased by 145%. Visit rates for COVID-like illness have followed a similar upward trend.
- Healthcare visit rates for pneumonia increased by 71% for AI/AN and by 14% for the total population over the past four weeks.
- Healthcare visit rates for influenza-like illness in the total population appear to be increasing over time.
- Healthcare visit rates for suspected vaccine adverse events remain low for the AI/AN population; there have been <5 suspected VAE visits per week over the past 5 weeks. The rate of suspected VAE visits in the total population has decreased over the past four months.
- AI/AN and total healthcare visit rates for psychological distress, suicide ideation, and suicide attempts have shown a downward trend over the past several weeks.



# Reminder of NWTEC Request

- Need letters of support for the NWTEC competitive continuation
- Need letter from every tribe
- Request sent to delegates and health directors
- Fast turn around requested
- Request sent last week



# Indian Health Service Update

Dean Seyler, Geniel Harrison, Ashley Tuomi



NORTHWEST PORTLAND AREA  
INDIAN HEALTH BOARD  
*Indian Leadership for Indian Health*

# Legislative and Policy Update

Liz Coronado

August 10, 2021–Virtual Update



NORTHWEST PORTLAND AREA  
INDIAN HEALTH BOARD  
*Indian Leadership for Indian Health*

# Legislative and Policy Update Agenda

- Dept. of the Interior Update
- Legislative Updates
- Domestic Spending Plan
- Administrative & Regulatory Updates
- Upcoming Tribal Consultations
- Upcoming Regional & National Meetings
- NPAIHB Policy Resources



# Update from Department of the Interior



## *U.S. Senate confirms Bryan Newland*

- Assistant Secretary –  
Indian Affairs



NORTHWEST PORTLAND AREA  
INDIAN HEALTH BOARD  
*Indian Leadership for Indian Health*

# Legislative Updates

- U.S. Senate passes the Bipartisan Infrastructure package 69 to 30!
- The Senate is in session this week. The House is in recess until August 30.
- **S. 2616** - *Livable Communities Act of 2021*
  - Sen. Menendez (D-NJ) - Introduced 8/5/21





# \$3.5 Trillion Domestic Spending Bill

- **Biden's Build Back Better Plan**

- To address priorities such as climate change, the tax code, health care, and immigration
- Incorporates reconciliation instructions with the following:
  - \$20.5 billion for the Senate Committee on Indian Affairs
  - \$1.8 trillion investment for working families, elderly, and environment and historic tax cut for those making less than \$400k to the Finance Committee
  - \$726 billion for the Committee on Health, Education, Labor and Pensions



# Administrative and Regulatory Updates

- **Health IT Modernization Project Update**
  - IHS posted the draft Statement of Objectives
  - IHS issued DTLL Aug 9, 2021
  - Tribal comments are due **Sep 6, 2021**
- **Not Invisible Joint Commission on Reducing Violent Crime Against Indians**
  - Nominations are due **Sep 20, 2021** to [consultation@bia.gov](mailto:consultation@bia.gov)
- **Medicare Physician Fee Schedule Proposed Rule**
  - Comments are due **Sep 13, 2021**
- **Medicare Proposed Rule on Home Health Value Based Purchasing**
  - Comments are due **Aug 27, 2021**



# Upcoming Tribal Consultations

- **105(l) Leases Tribal Consultation**

- **Friday, Aug 27, 2021 10-1 pm Pacific**
- Written comments due **Sep 13, 2021**



NORTHWEST PORTLAND AREA  
INDIAN HEALTH BOARD  
*Indian Leadership for Indian Health*

# Upcoming Deadlines

- **OMH Tribal Advisory Committee**
  - Comments due **Aug 20, 2021**
- **Reminder!** Region 10 Tribal Consultation Testimony
  - Due **Sep 3, 2021** to [consultation@hhs.gov](mailto:consultation@hhs.gov)
- **IHS Health Information Technology (HIT) Modernization**
  - Tribal comments on Statement of Objectives due **Sep 6, 2021**
- **CDC Tribal Consultation on Tribal Consultation Policy**
  - Written testimony due **Sep 7, 2021** to [tribalsupport@cdc.gov](mailto:tribalsupport@cdc.gov)



NORTHWEST PORTLAND AREA  
INDIAN HEALTH BOARD  
*Indian Leadership for Indian Health*

# Upcoming Regional & National Meetings

Aug 10	CHAP Tribal Assessment and Planning Grant TA Webinar 11:00 AM Pacific
Aug 11	CHAP Tribal Planning and Implementation Grant TA Webinar 11:00 AM Pacific
Aug 17	NIH TAC Monthly Meeting 11:00 AM Pacific
Aug 18	Tribal Leaders Diabetes Committee (TLDC) Monthly Call 1:00 PM Pacific
Aug 19	DSTAC Monthly Meeting 12:00 PM Pacific
Aug 25	Centers for Disease Control and Prevention (CDC) TAC Sub-Committee Monthly Meeting 11:00 AM Pacific



NORTHWEST PORTLAND AREA  
INDIAN HEALTH BOARD  
*Indian Leadership for Indian Health*

**Please contact Liz Coronado at [ecoronado@npaihb.org](mailto:ecoronado@npaihb.org) or Candice Jimenez at [cjimenez@npaihb.org](mailto:cjimenez@npaihb.org) for more information on any of these meetings.**

# NPAIHB Policy Resources

- Weekly – COVID-19 Call Lists (Mondays)
- Weekly – Legislative and Policy Updates (Tuesdays)
  - Federal Health Agency and Congress Tracker (*FHACT*)
- Weekly – Cindy Darcy's D.C. Legislative Update (Fridays)
- Monthly – Tribal Advisory Committee updates
- NPAIHB COVID-19 Funding Chart
  - Emailed Aug 2, 2021; will be included in the Leg and Policy Update





# Questions or Comments



Candice Jimenez, [cjimenez@npaihb.org](mailto:cjimenez@npaihb.org)

Liz Coronado, [ecoronado@npaihb.org](mailto:ecoronado@npaihb.org)



[This Photo](#) by Unknown Author is licensed under [CC BY-SA](#)



NORTHWEST PORTLAND AREA  
INDIAN HEALTH BOARD  
*Indian Leadership for Indian Health*

# State Partner Updates

Washington AIHC/DOH/HCA: Lou Schmitz, Tamara Fife, and Jessie Dean

NPAIHB: Tam Lutz

Oregon OHA: Julie Johnson

NPAIHB: Sue Steward and Candice Jimenez

Idaho DHW: Joyce Broadsword

NPAIHB: Liz Coronado and Jessica Leston



NORTHWEST PORTLAND AREA  
INDIAN HEALTH BOARD  
*Indian Leadership for Indian Health*



# Questions or Comments



NORTHWEST PORTLAND AREA  
INDIAN HEALTH BOARD  
*Indian Leadership for Indian Health*