

COVID-19 Pandemic Public Health Emergency Response

Celeste L. Davis, REHS, MPH (Chickasaw Nation)
Environmental Public Health Program Director
Incident Commander



NORTHWEST PORTLAND AREA
INDIAN HEALTH BOARD
Indian Leadership for Indian Health

The Incident Command System Team

ICS ROLE	NPAIHB ICS TITLE	NPAIHB STAFF
Incident Commander	Incident Commander	Celeste Davis
Assistant to IC	IC Coordinator	Holly Duffy
Liaison Officers	Oregon Liaison Officer	Sue Steward
	Washington/AIHC Liaison Officer	Tam Lutz
	Idaho Liaison Officer	Jessica Leston
	Policy Liaison Officer (ID, OR, & WA)	Veronica Smith, Liz Coronado, Candice Jimenez
Planning Section Chief	Planning & Information Coordinator	Victoria Warren-Mears
Data Analysis	Data Specialist	Sujata Joshi
Data Collection/Entry	Data Assistant	Bridget Canniff
Community Planning	Food Security Specialist	Nora Frank-Buckner
MCM Planning	MCM Planner	Katie Johnson
Operations Section Chief	Public Health Officer	Tom Weiser
Clinical Education & Support Unit Lead	COVID-19 ECHO Manager	David Stephens
Mental Health Education & Support Unit Lead	BH Program Manager	Danica Brown
Environmental Public Health/Occupational Safety & Health Unit Lead	EH Specialist/Occupational Safety & Health Specialist	Shawn Blackshear
Communicable Disease Unit Lead	CD Control/PHN	Dawn Bankson
Communications & Health Promotion Unit Lead	Communications Specialist	Stephanie Rushing
Logistics Section Chief	Medical & PPE Supplies Coordinator	Holly Duffy
Finance/Administration Section Chief	IC Administrative Assistant	Lisa Griggs



Public Health Operations

- **Clinical Education and Support: COVID-19 ECHOs**
 - NWTEC/NPAIHB has hosted 78 COVID-19 ECHO clinics
 - 9,512 participants, and
 - Answered 1,152 questions
- **Mental Health Education and Support**
 - Receive data when persons of concern use the words “Native” or “Indigenous” and text to communicate with a Crisis Text Line (CTL) counselor at 741741
 - Behavioral Health Needs Assessment - Plans to conduct 10 key informant interviews with behavioral health, chemical dependency and MAT providers.
- **Communicable Disease Prevention: Case Investigation & Contact Tracing**
 - Approximately 100 Participants for Case Investigation & Contact Tracing Training
 - 4 Deployments with two Tribes to provide onsite assistance; Remote assistance for one Tribe
 - Developed a Tribal Resource Guide for Case Investigation & Contact Tracing



Public Health Operations

- **Environmental/Occupation Health & Safety:**
 - Over 80 Facility Reviews/Inspections, Risk Assessments
 - Collaborated with CDC to conduct virtual Clinical Infection Control consults
 - Dozens of consults and professional advice/technical guidance
 - Reopening safely, Infection Prevention & Control, Occupational Health, Indoor Air Quality
- **Communications: Health Promotion & Prevention Messaging & Materials**
 - Website, Social Media, PSAs, Print
 - Big Foot Cut Outs; "Safe Sweats" and "Brothers" PSAs



Planning & Information Support

- **Surge Staffing & Resources**

- Management of Emergency CDC Funds Distribution to Tribes
- CDC Foundation Surge Staffing – ended 3/31, 2 short extensions

- **Logistics & PPE**

- Respiratory Fit Test Kits for Clinics
- Diabetes Patients' Health Promotion Kits
- PPE & Medical Supplies: 9200 nitrile gloves, 102 containers of hospital-grade disinfecting wipes, 3550 disposable surgical masks, 2180 N95 respirators, 2 air purifiers, 1 Temperature Scan Kiosk and Extension Kit and more

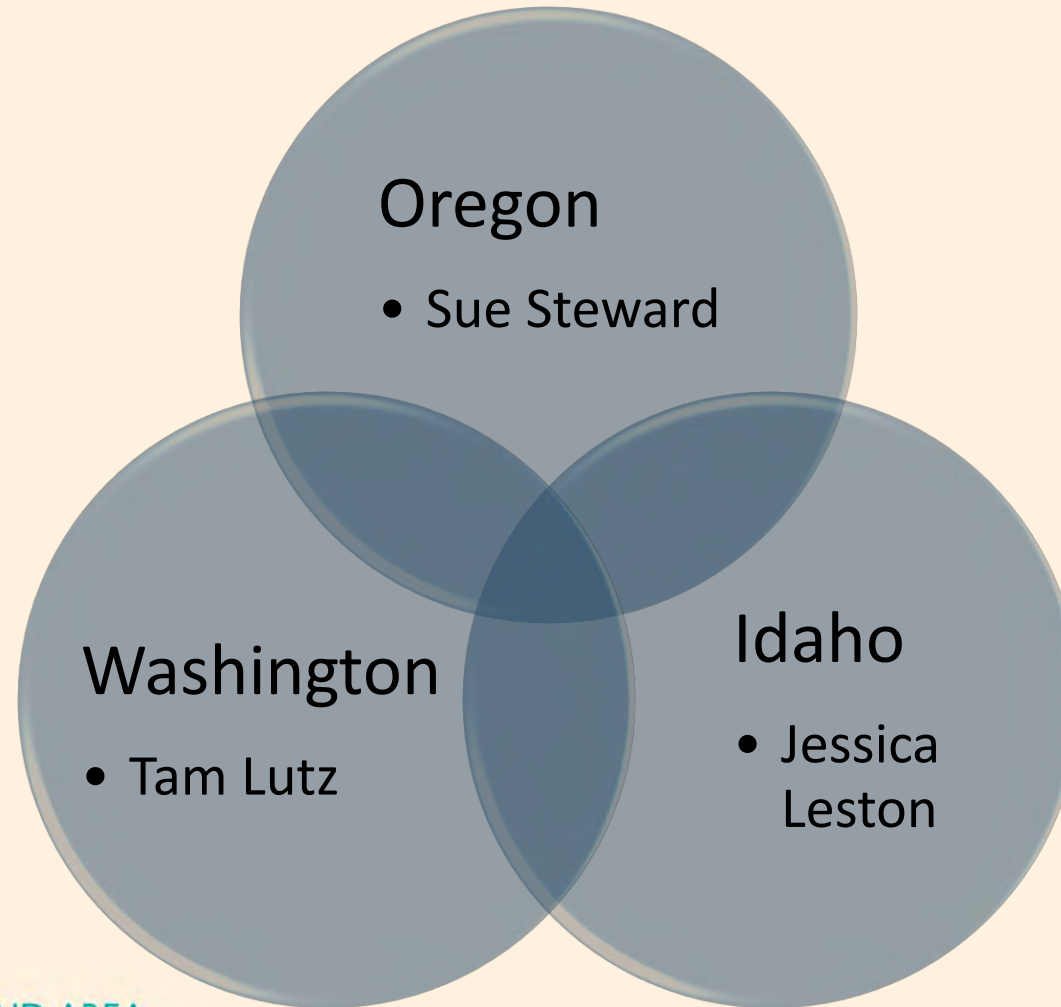


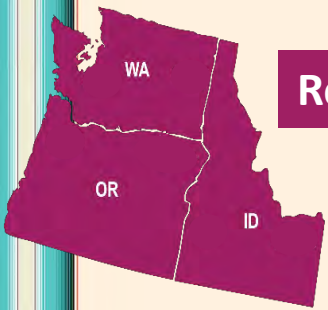
Planning & Information Support

- **Data Collection & Analysis**
 - Bi-weekly regional data reports
 - Technical Assistance in Data Analysis for Tribes
- **Medical Counter Measure Planning – VACCINES!**
 - Coordinating with IHS and States
 - NW only - created and support 42 VAMS clinic portals to facilitate vaccine reporting to CDC
 - National - provided training: COVID 19 Vaccine Data Management – part of a team that delivered 34 classes (6,066 participants) in November and December, with twice weekly office hours ongoing
 - National - part of a team that developed telemedicine documentation guidance documents and training for IHS



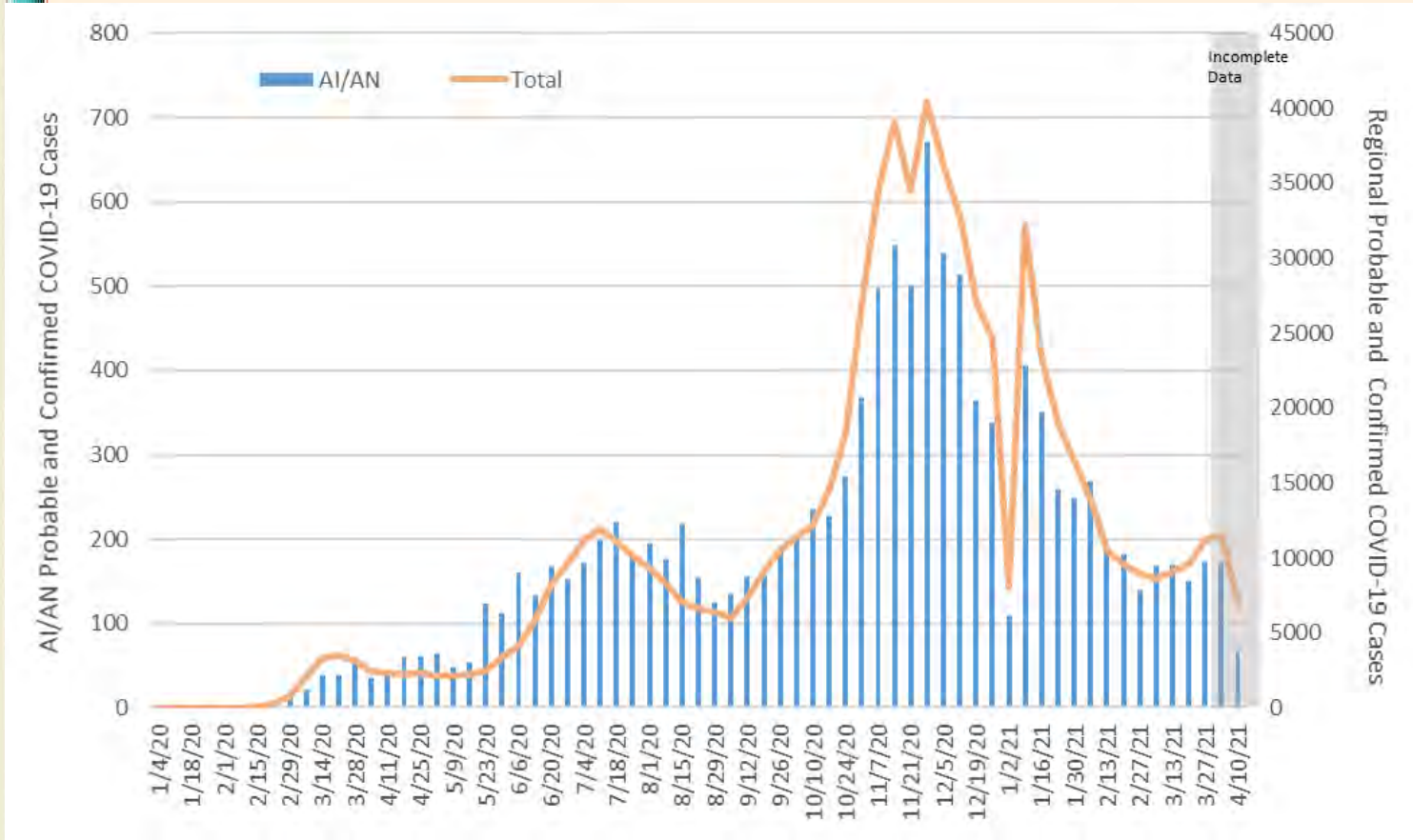
Situational Awareness & ICS Liaisons





Regional COVID-19 Data

EpiCurve of COVID-19 Cases by Week



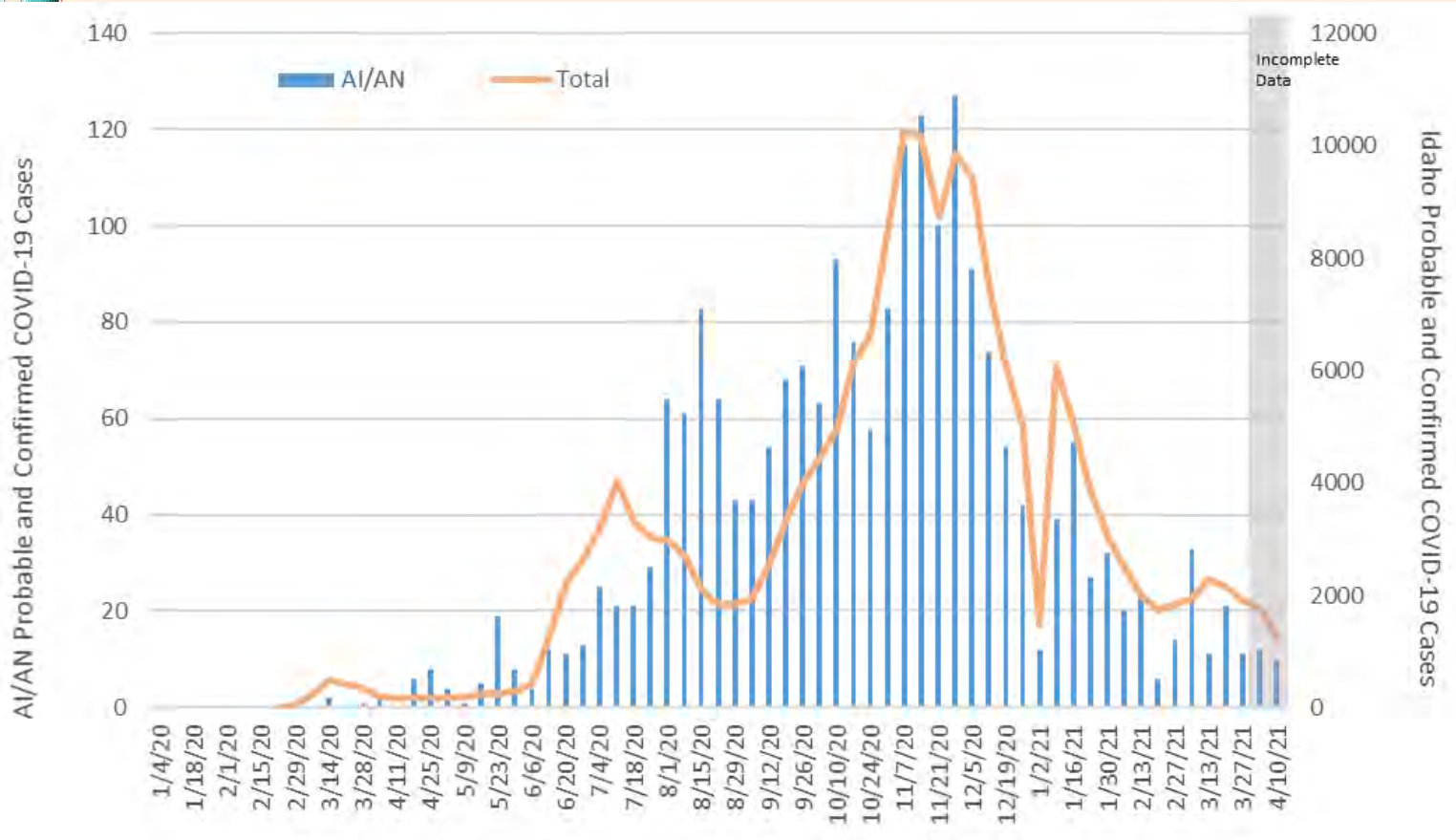
Characteristics of COVID-19 Cases through 4/12

Race		N	%
	AI/AN	12,005	1.6%
	Non-AI/AN	437,758	60.0%
	Unknown	279,295	38.3%
	Total	729,058	100.0%
Case Status		AI/AN	State Total
	Laboratory Confirmed	92.4%	90.7%
	Probable	7.6%	9.3%
Sex		AI/AN	State Total
	Male	46.0%	47.9%
	Female	53.0%	49.9%
	Other	0.0%	0.0%
	Missing/Unknown	1.0%	2.2%
Age Group		AI/AN	State Total
	0-9	7.0%	4.8%
	10-19	13.0%	11.4%
	20-29	21.4%	20.9%
	30-39	18.8%	17.6%
	40-49	14.8%	15.2%
	50-59	12.0%	12.9%
	60-69	7.9%	8.8%
	70-79	3.6%	4.9%
	80+	1.4%	3.4%
	Missing	0.0%	0.1%
Hospitalization Status		AI/AN	State Total
	Hospitalized	6.9%	5.1%
	Not Hospitalized	81.2%	81.2%
	Unknown	12.0%	13.7%

Idaho COVID-19 Data

IDAHO

EpiCurve of COVID-19 Cases by Week



Characteristics of COVID-19 Cases through 4/12

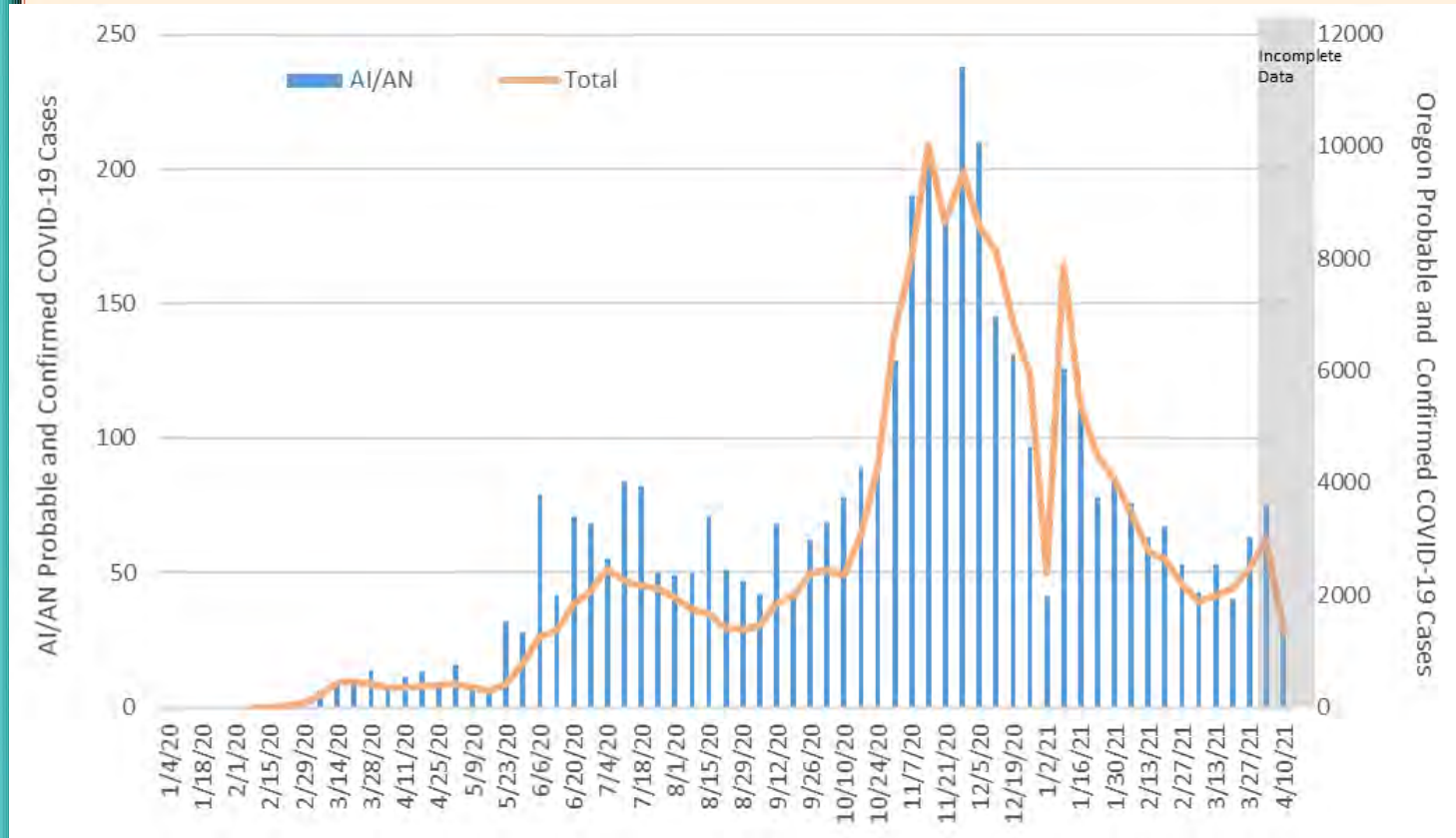
Race		N	%
	AI/AN	2,171	1.2%
	Non-AI/AN	119,194	65.1%
	Unknown	61,841	33.8%
	Total	183,206	100.0%
Case Status		AI/AN	State Total
	Laboratory Confirmed	83.5%	80.3%
	Probable	16.5%	19.7%
Sex		AI/AN	State Total
	Male	40.5%	47.5%
	Female	56.3%	51.5%
	Other	0.0%	0.0%
	Missing/Unknown	3.2%	1.0%
Age Group		AI/AN	State Total
	0-9	6.6%	3.5%
	10-19	15.1%	11.9%
	20-29	19.2%	20.5%
	30-39	18.3%	16.7%
	40-49	14.4%	15.4%
	50-59	10.4%	13.1%
	60-69	9.2%	9.6%
	70-79	4.6%	5.7%
	80+	2.1%	3.6%
	Missing	0.0%	0.0%
Hospitalization Status		AI/AN	State Total
	Hospitalized	7.2%	4.0%
	Not Hospitalized	60.7%	66.9%
	Unknown	32.1%	29.2%



OREGON

Oregon COVID-19 Data

EpiCurve of COVID-19 Cases by Week



Characteristics of COVID-19 Cases through 4/12

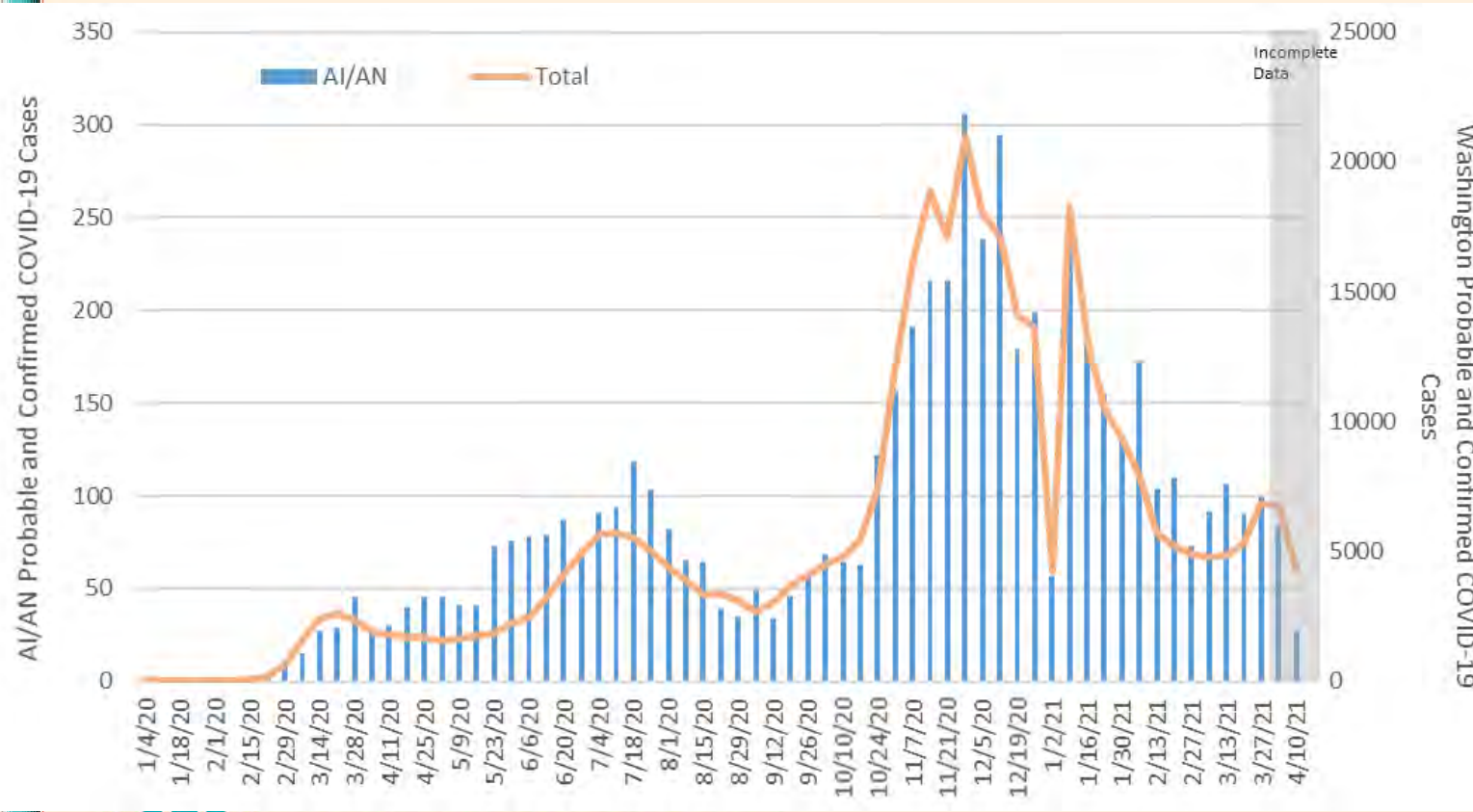
Race		N	%
	AI/AN	4,057	2.4%
	Non-AI/AN	135,054	79.7%
	Unknown	30,402	17.9%
	Total	169,513	100.0%
Case Status		AI/AN	State Total
	Laboratory Confirmed	96.5%	96.3%
	Probable	3.5%	3.7%
Sex		AI/AN	State Total
	Male	45.5%	48.2%
	Female	53.5%	50.8%
	Other	0.1%	0.0%
	Missing/Unknown	0.9%	1.0%
Age Group		AI/AN	State Total
	0-9	7.3%	4.8%
	10-19	13.3%	11.2%
	20-29	21.2%	21.0%
	30-39	18.1%	17.4%
	40-49	15.3%	15.4%
	50-59	12.2%	12.8%
	60-69	7.6%	8.6%
	70-79	3.5%	5.0%
	80+	1.4%	3.7%
	Missing	0.0%	0.0%
Hospitalization Status		AI/AN	State Total
	Hospitalized	7.2%	5.3%
	Not Hospitalized	74.6%	67.4%
	Unknown	18.2%	27.2%



**NORTHWEST PORTLAND AREA
INDIAN HEALTH BOARD**
Indian Leadership for Indian Health

Washington COVID-19 Data

EpiCurve of COVID-19 Cases by Week



Characteristics of COVID-19 Cases through 4/12

Race	N	%
AI/AN	5,777	1.5%
Non-AI/AN	183,510	48.8%
Unknown	187,052	49.7%
Total	376,339	100.0%


Case Status	AI/AN	State Total
Laboratory Confirmed	92.9%	93.3%
Probable	7.1%	6.7%

Sex	AI/AN	State Total
Male	48.5%	48.1%
Female	51.4%	48.6%
Other	0.0%	0.0%
Missing/Unknown	0.1%	3.3%

Age Group	AI/AN	State Total
0-9	6.9%	5.3%
10-19	12.0%	11.3%
20-29	22.4%	21.0%
30-39	19.4%	18.2%
40-49	14.6%	15.1%
50-59	12.4%	12.9%
60-69	7.6%	8.5%
70-79	3.4%	4.4%
80+	1.2%	3.2%
Missing	0.1%	0.1%






Hospitalization Status	AI/AN	State Total
Hospitalized	6.5%	5.6%
Not Hospitalized	93.5%	94.4%
Unknown	0.0%	0.0%

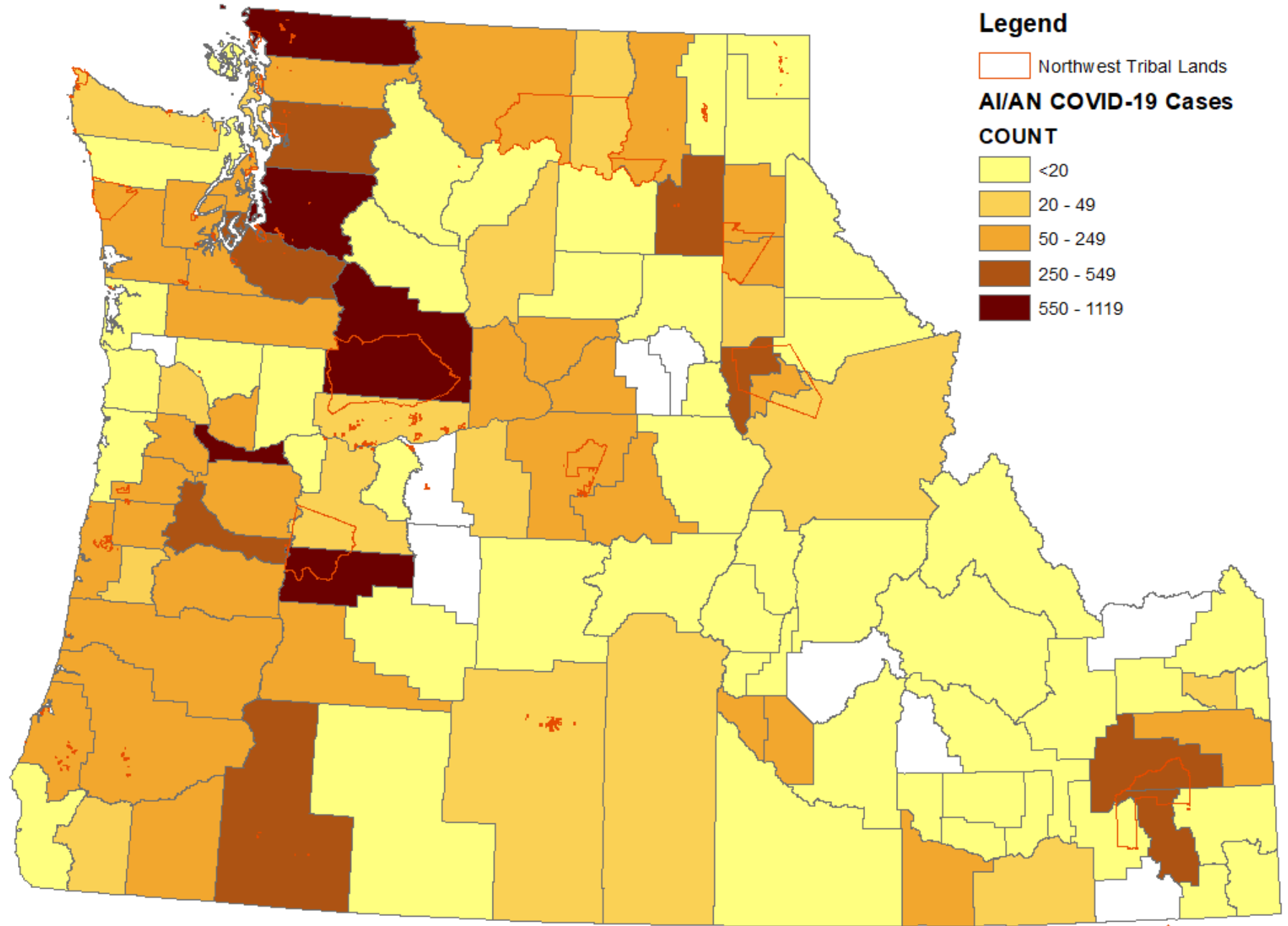
Legend

 Northwest Tribal Lands

AI/AN COVID-19 Cases

COUNT

-  <20
-  20 - 49
-  50 - 249
-  250 - 549
-  550 - 1119



Leadership & Guidance

- **Engaging with Tribal Health Leadership**
 - Zoom Meeting Every Tuesday at 10, Forum for Information Exchange & Sharing
- **Technical Guidance & Support for Tribal Leader's Decision-Making**
 - “Vaccine Comparison Chart
 - “Scientific & Technical Guidance on Achieving Community Immunity”
- **Policy Advocacy**
 - Legislation & Funding
 - Vaccine Distribution



One Year Later...

Successes

- Adaptability & Innovation – developing case investigation and contact tracing from scratch
- Wrap around services and supports – quarantine & isolation
- Partnerships with IHS and the States

Challenges

- Still have mixed messages, Politicization of Public Health
- Structural and systemic inequities of course lead to health disparities
- Indian Health remains woefully underfunded



The Road Ahead

- Anticipate Operating under Public Health Emergency Declaration through 2021
- Vaccinations will be what wins the Battle
- How to integrating efforts into new Pandemic/COVID-19 Plans
- Given the Re\$ources, Tribes Can Excel – will it continue?
- Focus on Improving Health Disparities
 - Demand for Resources to Strengthen PH Infrastructure
 - Addressing Social Determinants of Health
 - Research on COVID-19, Health Services & Policy Research



END

- THANK YOU!

- CELESTE DAVIS
- cdavis@npaihb.org
- 505.670.8380 (cell phone)



NORTHWEST PORTLAND AREA
INDIAN HEALTH BOARD
Indian Leadership for Indian Health