



# California Tribal Epidemiology Center

2020 Northwest Tribal Health Conference  
February 21, 2020

Vanesscia Cresci, MSW, MPA  
Director, Research & Public Health Department  
California Rural Indian Health Board, Inc.









# California Tribal Epidemiology Center

- Formed in 2005
- Housed within the California Rural Indian Health Board's Research and Public Health Department
- Guided by an Advisory Council, but reports to CRIHB Board of Directors
- Staff by 1 Epidemiology Manager, 6 Epidemiologists, 4 Program Evaluators, 2 Project Coordinators, 1 Research Associate, and 1 Outreach Coordinator
- 34 Data Sharing Agreements: 3 Tribes, 25 Tribal Health Programs and 12 Urban Indian Health Programs

# California Tribes

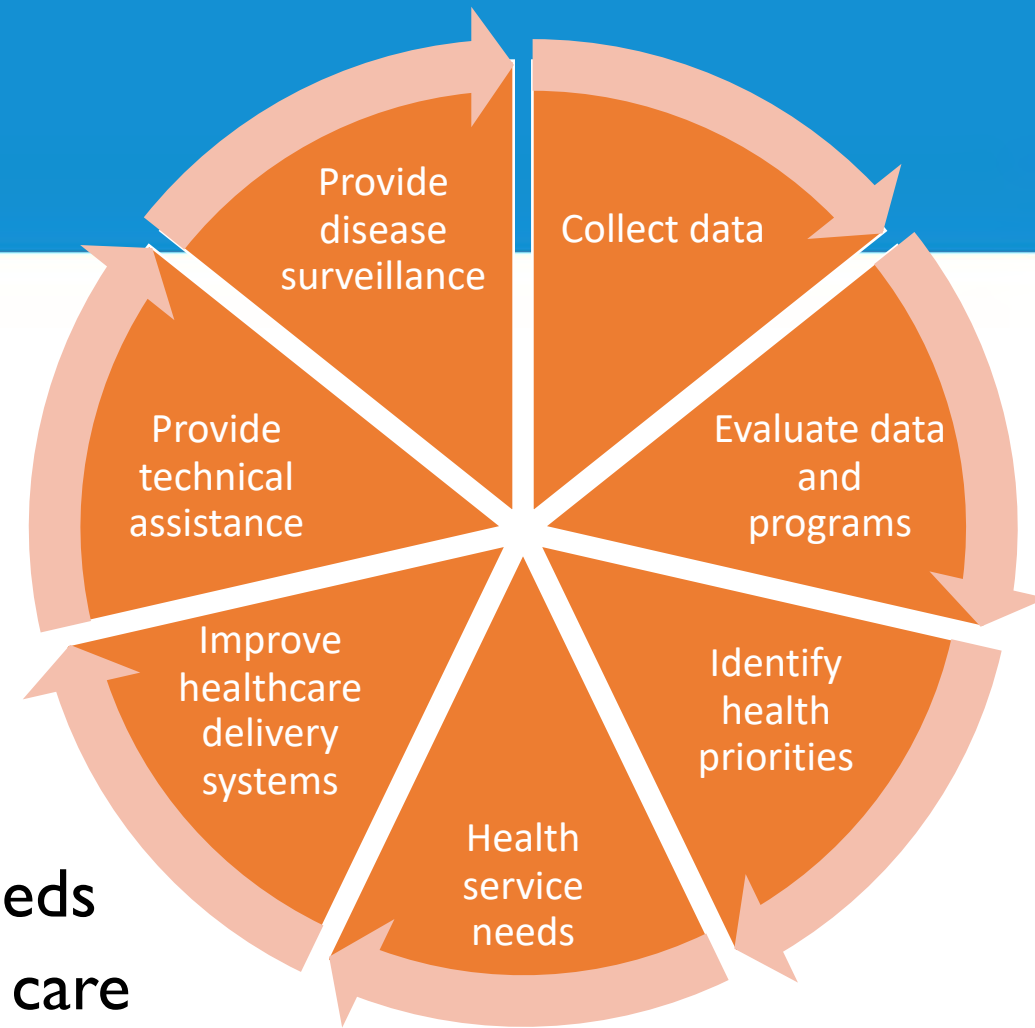
- 109 Federally recognized Tribes and approximately 40 Tribes seeking recognition
- 32 Tribal Health Programs
- 8 Urban Indian Health Programs

Table 1. Tribal Health Program Active Users, 2018

	Total	Percent
<b>AIAN Category</b>	<b>85,268</b>	<b>40.3%</b>
California Federally Recognized AIAN	38,880	17.4%
California Non-Federally Recognized AIAN	20,677	9.8%
Out-of-State Federally Recognized AIAN	21,012	9.9%
Other AIAN (Non-Tribal Member, Unspecified, Unknown)	6,699	3.2%
<b>Non-AIAN</b>	<b>126,335</b>	<b>59.7%</b>

# 7 Core Functions

- Collect data
- Evaluate data and programs
- Identify health priorities with Tribes
- Make recommendations for health service needs
- Make recommendations for improving health care delivery systems
- Provide epidemiologic technical assistance to Tribes and Tribal organizations
- Provide disease surveillance to Tribes







# I. Collect Data

- Tribal Behavioral Risk Factor Survey
- Indian Health Program and Tribal Community Health Assessments
- California Health Interview Survey: AIAN oversample
- Health Priorities Survey
- Oral Health Needs Assessment
- California Tribal Opioid Strategic Plan
- Tribal Opioid Surveillance Assessment





## 2. Evaluate Data and Programs

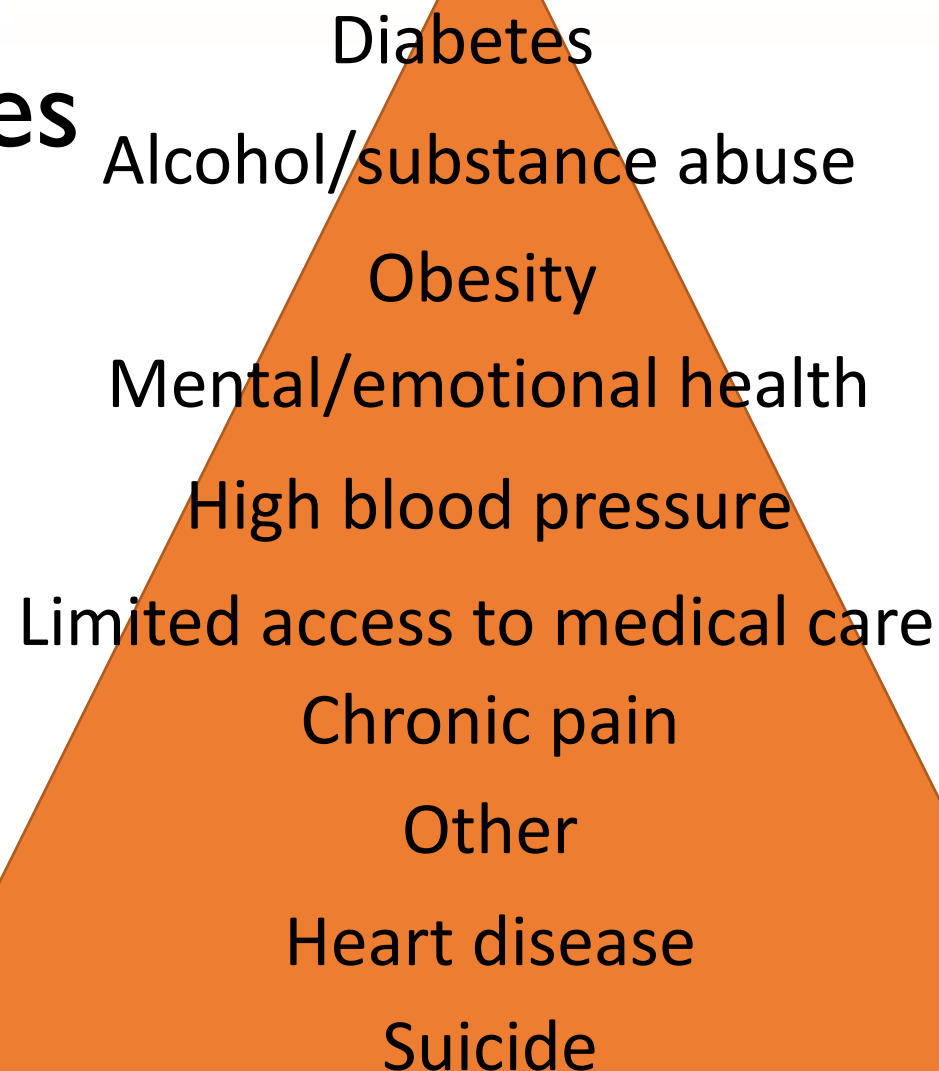
- MSPI/DVPI Technical Assistance Provider
- California Tribal Comprehensive Cancer Control Program
- Tribal Personal Responsibility and Education Program
- Native Connections
- Building Public Health Infrastructure in Indian Community
- Tribal Public Health Capacity Building
- Project Pathway
- Tribal Opioid Response
- Dental Transformation Initiative
- Provide specialized evaluation to Tribal projects upon request





### 3. Identify Health Priorities

- Health Priorities Survey:  
Statewide to community, 2017
- Annual Health Priorities Survey:  
THP/UIHP Directors
- Multi-site THP priorities reports



Diabetes  
Alcohol/substance abuse  
Obesity  
Mental/emotional health  
High blood pressure  
Limited access to medical care  
Chronic pain  
Other  
Heart disease  
Suicide





## 4. Make Recommendations for Health Service Needs

- Provide feedback and data for Tribal consultations
- Serve as a resource for federal agency Tribal Advisory Committees' California delegates
- Develop and publish data reports





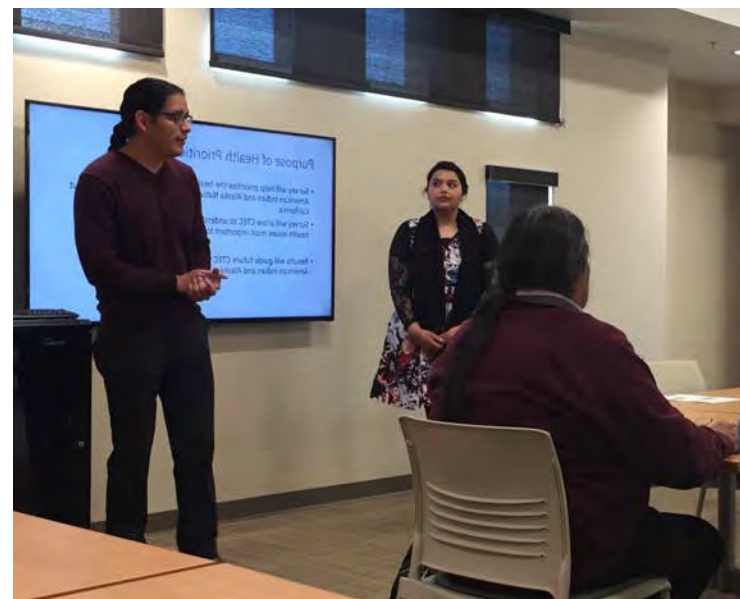
## 5. Improving Healthcare Delivery Systems

- Collaborate with Medical Director/Medical Epidemiologist and Public Health Nurse on projects
- Summer Research Assistant Program
- Annual Data, Evaluation, and Grant Writing training
- Tribal Adverse Childhood Experiences pilot project



## 6. Provide Technical Assistance

- Access to data
- Data collection
- Data interpretation and dissemination
- Program evaluation
- Survey development
- Evaluation plan development
- Focus groups
- Key Informant Interviews
- Community health assessments
- Community Readiness Model
- Outbreak response
- Surveillance
- Data management and use
- Data visualization







## 7. Provide Disease Surveillance and Promotion of Public Health

- Development of a Disease Outbreak Response Protocol
- Development of a Disease Surveillance Protocol
- Monitor infectious diseases
  - Disseminated information regarding Zika, Measles, and Novel Coronavirus
  - Emergency Preparedness staff capacity development
- Partner with a Tribe to pilot ODMAP use
- Partner with 2 Tribal Health Programs to link AIAN data with death vital statistics to assess racial misclassification
- Partner with a Tribe to assess fatal opioid overdose in Tribal community

# Questions

Vanesscia Cresci, MSW, MPA  
Director, Research & Public Health Department  
California Rural Indian Health Board, Inc.

[vcresci@crihb.org](mailto:vcresci@crihb.org)

(916) 929-9761 x1500

<http://www.crihb.org/ctec>

