

# 2018 Tribal Endocrinology teleECHO Clinic

## What Is Project ECHO?

(Extension for Community Healthcare Outcomes). The goal of this program is to increase the capacity of primary care providers to safely and effectively treat chronic, common, and complex conditions.

Project ECHO, through the use of video conferencing, education, and research, increases knowledge of providers and health care professionals and strengthens best practice of care for all patients

## Our Focus

Diabetes prevalence in Native American Communities is greater than 2 times that of non-Hispanic whites. Despite the high prevalence, access to endocrinology in IHS and Tribal clinics is limited. Optimizing blood sugar control in tribal communities would improve patient outcomes and improve quality of life.

- Improve quality of clinical services
- Increase experts in the field
- Enhance community-clinical relationships
- Adopt cultural practices

## Endo ECHO Pilot

Northwest Tribal Epidemiology Center (NWTEC) is starting an Endocrinology Clinic Pilot project. All tribal clinics in Idaho, Oregon, and Washington are invited to attend and participate.

We welcome you to submit a case presentation form or join in the teleECHO clinic on the **second Thursday of every month starting April 12, 2018 from 10-11am PST**

For more information, contact us at [weave@npaihb.org](mailto:weave@npaihb.org)



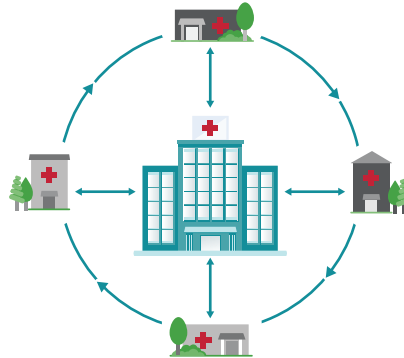
**NPAIHB**  
*Indian Leadership for Indian Health*



In the U.S. and around the world, people are not getting the care they need, when they need it, for complex but treatable conditions.

## Moving Knowledge, Not Patients

Through telementoring, ECHO builds capacity and creates access to high-quality specialty care serving local communities.



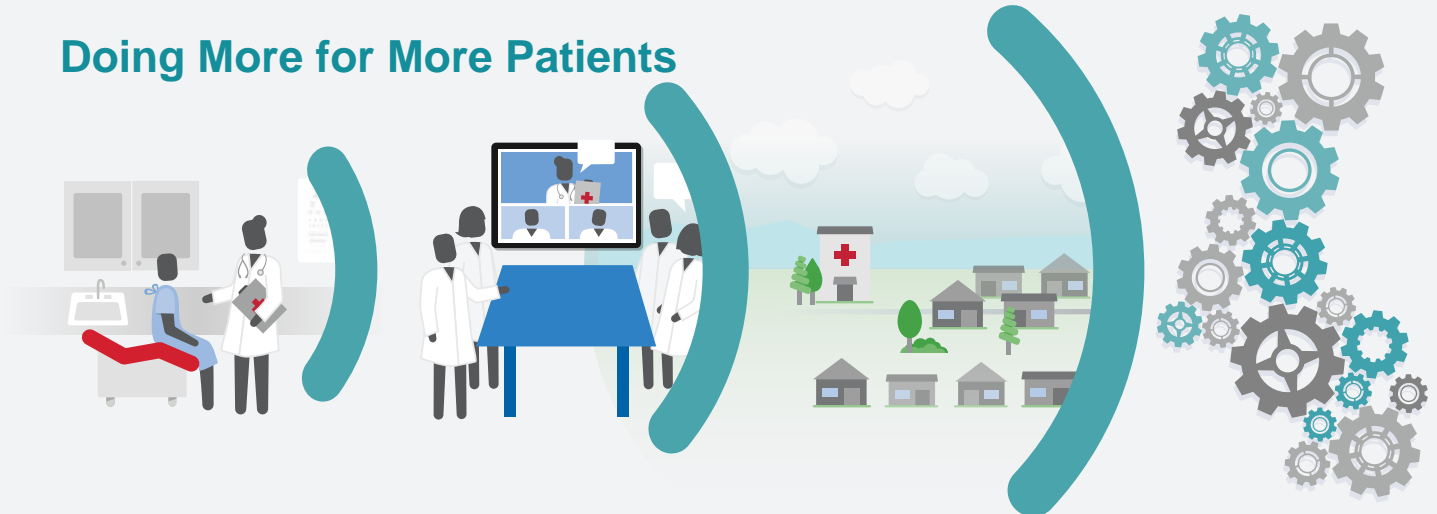
## Hub and spoke knowledge-sharing networks create a learning loop:

Community providers learn from specialists.

Community providers learn from each other.

Specialists learn from community providers as best practices emerge.

## Doing More for More Patients



### PATIENT

- Right Care
- Right Place
- Right Time

### PROVIDER

- Acquire New Knowledge
- Treat More Patients
- Build Community of Practice

### COMMUNITY

- Reduce Disparities
- Retain Providers
- Keep Patients Local

### SYSTEM

- Increase Access
- Improve Quality
- Reduce Cost

## Changing the World, Fast

### NEW MEXICO

- Operating more than 30+ teleECHO programs
- More than 400 community clinic sites

### NATIONAL

- Operating in more than 30 states and growing
- More than 65 complex conditions

### GLOBAL

- Operating in more than 24 countries and growing
- Goal of touching 1 billion lives by 2025