




NWTEC 2016 Survey Results



PRESENTED BY:  
 NANETTE STAR YANDELL, MPH  
 PROJECT DIRECTOR & EPIDEMIOLOGIST  
 NYANDELL@NPAIHB.ORG

---

---

---

---

---


---

---

---

Introduction

- Survey conducted in Fall 2015
- Completed by 26 Tribes
- Purpose:
  - Feedback for EpiCenter
  - Health Priorities
  - Public Health Policies

Northwest Portland Area Indian Health Board


---

---

---

---

---


---

---

---

What is the EpiCenter doing well?

- ✓ Data reports
  - ✓ <http://www.npaihb.org/resource-lib/>
- ✓ Public health information – general
- ✓ Grants, financial assistance
- ✓ Responsive and friendly staff

Northwest Portland Area Indian Health Board


---

---

---

---

---

---

---

---

### What can we improve?

- More outreach to programs outside of administrative
- Tribal government public health policy
- Provide best practices, esp. tribally adapted & culturally appropriate
- Tribal data warehouse
- Technical Assistance for NextGen
- Better communication of what the EpiCenter does

Northwest Portland Area Indian Health Board




---

---

---

---

---

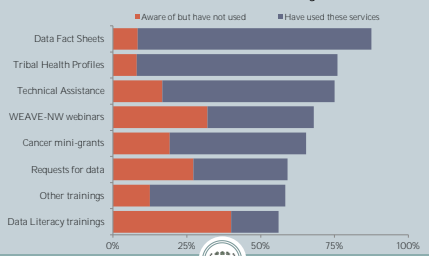
---

---

---

### Epicenter Services

Data products such as fact sheets and health profiles were the most commonly used



Northwest Portland Area Indian Health Board




---

---

---

---

---

---

---

---

### Top Three Health Priorities

1. Overweight and obesity (10)
2. Substance Abuse (7)
3. Mental health (6)



Northwest Portland Area Indian Health Board




---

---

---

---

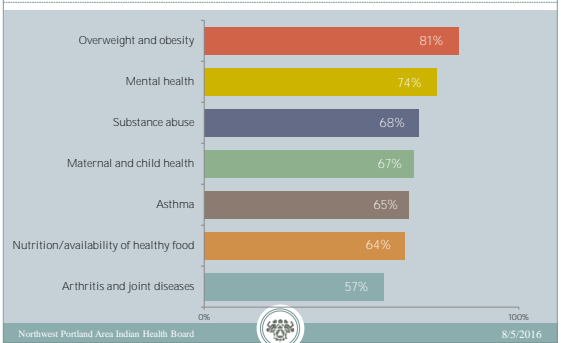
---

---

---

---

### EpiCenter could do more about...




---

---

---

---

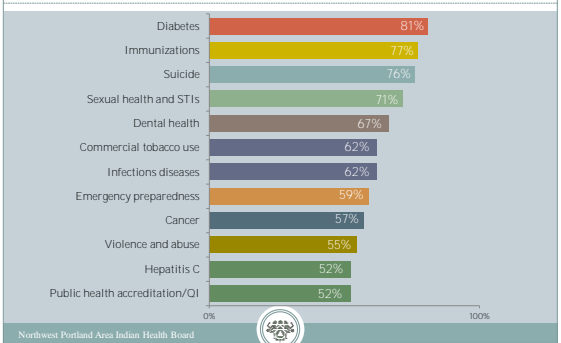
---

---

---

---

### EpiCenter is doing well to address...




---

---

---

---

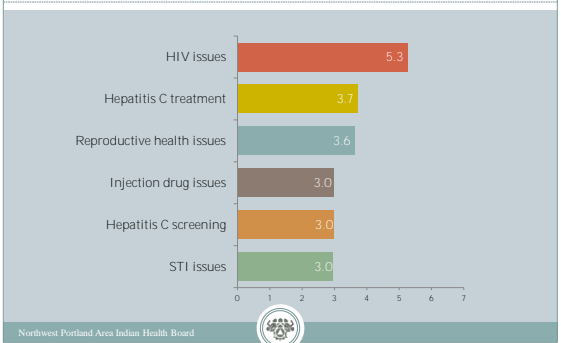
---

---

---

---

### Top Sexual Health Priorities




---

---

---

---

---

---

---

---

### Policy, Systems & Environment

Policy passing of or change to a law, ordinance, resolution, regulation or rule designed to guide or influence behavior

System involves change made to organizational procedures

Environment change made to the physical surroundings



---

---

---

---

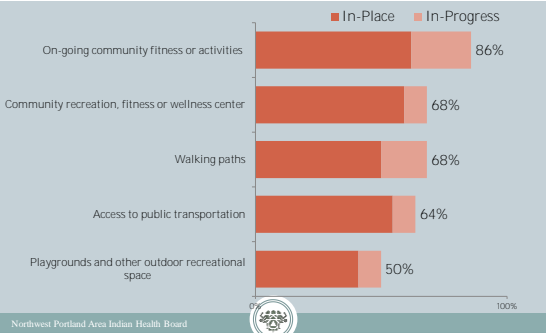
---

---

---

---

### Top 5 Physical Activity PSEs



---

---

---

---

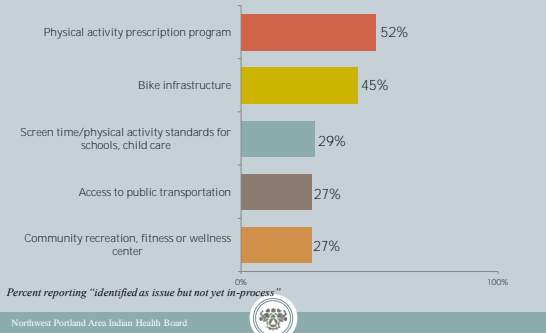
---

---

---

---

### Identified Opportunities



---

---

---

---

---

---

---

---

### Top 5 Food & Nutrition PSEs




---

---

---

---

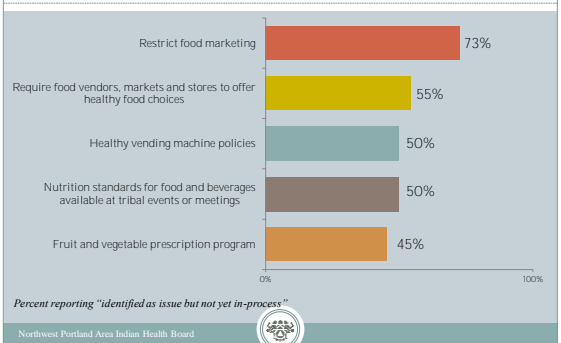
---

---

---

---

### Identified Opportunities




---

---

---

---

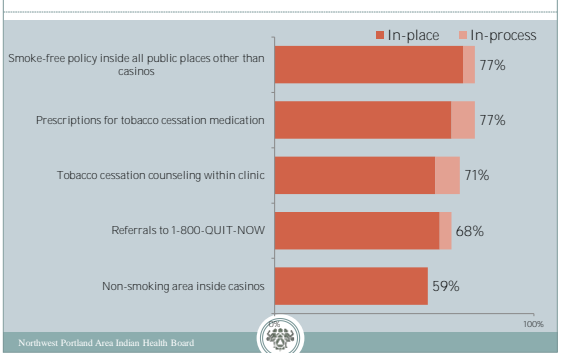
---

---

---

---

### Top 5 Commercial Tobacco PSEs




---

---

---

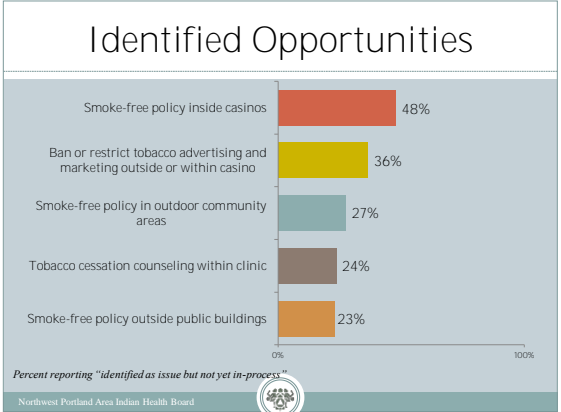
---

---

---

---

---




---

---

---

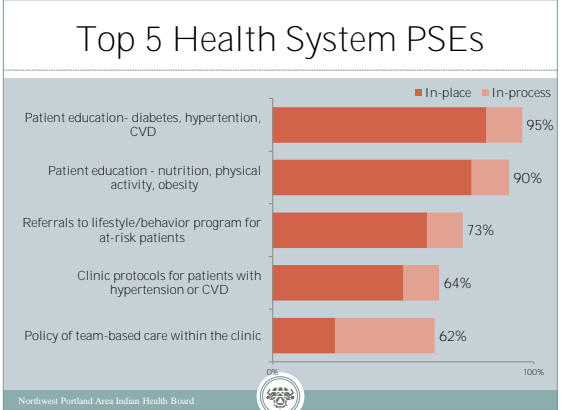
---

---

---

---

---




---

---

---

---

---

---

---

---




---

---

---


---

---


---

---

---



**Northwest  
Portland Area  
Indian Health  
Board**  
*Indian Leadership for  
Indian Health*



**Northwest Tribal Epidemiology Center**

2121 SW Broadway, Suite 300  
Portland, Oregon 97201  
Phone: (503) 228-4285  
Fax: (503) 228-8282

Northwest Portland Area Indian Health Board

Thank you!

---



---



---



---



---



---



---