

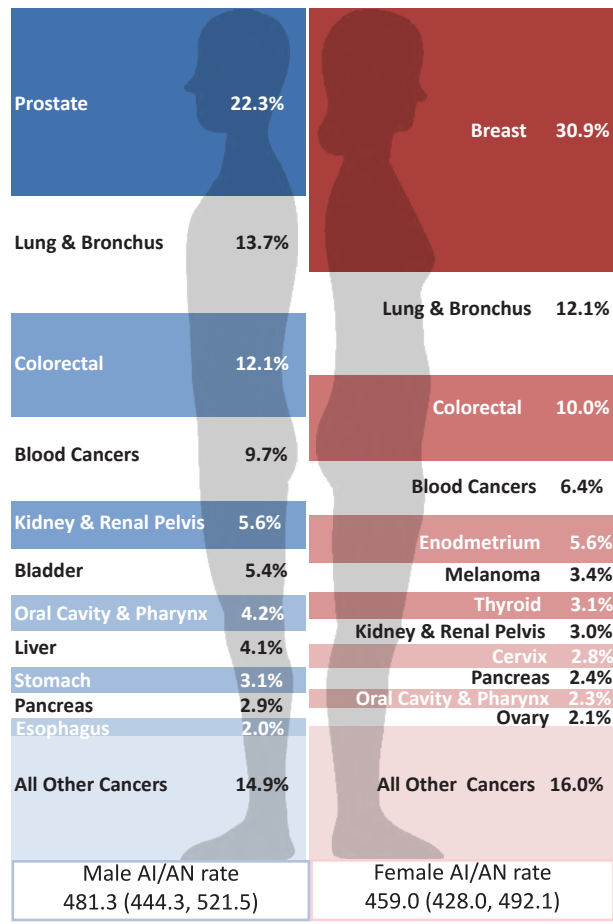


# Cancer among American Indians and Alaska Natives in Washington, 2003-2007

Northwest Portland Area Indian Health Board  
Indian Leadership for Indian Health



## Leading cancer sites by sex



### Leading cancer sites by age group and sex (percent of cases)

Rank	20-39		40-64		65+	
	Male	Female	Male	Female	Male	Female
1	Blood cancers (17.7%)	Breast (23.6%)	Prostate (19.8%)	Breast (41.2%)	Prostate (28.9%)	Breast (20.4%)
2	Testis (13.7%)	Thyroid (14.6%)	Colorectal (13.0%)	Colorectal (9.1%)	Lung & bronchus (19.3%)	Lung & bronchus (19.6%)
3	Kidney; Melanoma (11.8% ea.)	Cervix (12.4%)	Blood cancers (11.3%)	Lung & bronchus (8.7%)	Colorectal (12.4%)	Colorectal (12.8%)

Note: younger age groups had too few cases to report

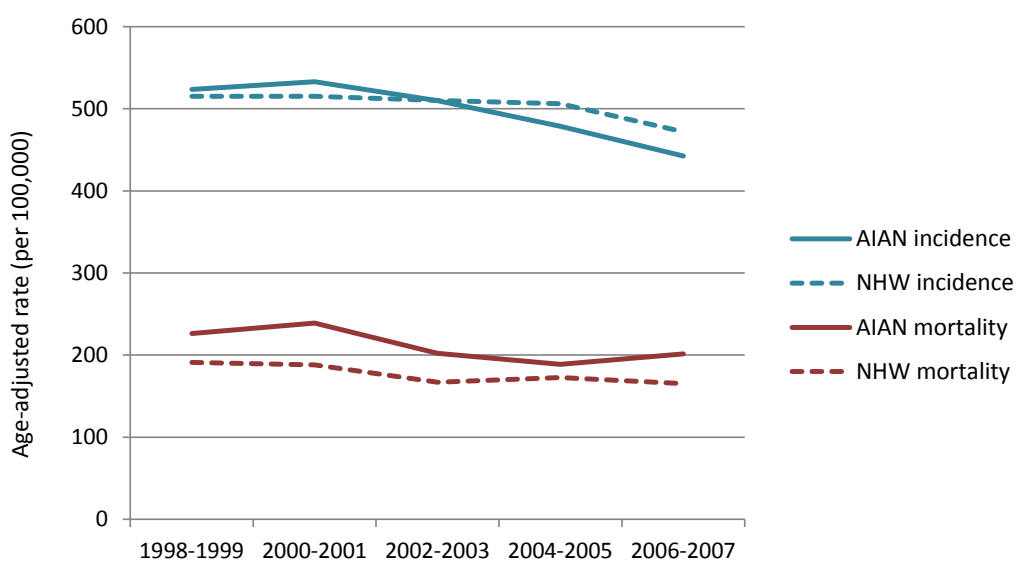
### Incidence, selected cancer sites per 100,000 population, calculated using invasive cases only

Cancer	n	Rate (95% CI)	NHW Rate (95% CI)
All Sites	1757	467.8 (444.0, 492.8)	492.2 (489.5, 494.9)
Prostate (male)	186	117.2 (99.1, 138.7)	158.1 (155.9, 160.4)
Breast (female)	262	115.1 (100.7, 131.3)	132.1 (130.3, 134.0)
Lung & Bronchus	238	73.9 (64.1, 84.9)	68.0 (67.0, 69.0)
Colorectal	197	55.8 (47.6, 65.4)	43.7 (42.9, 44.5)
Blood cancers	146	37.0 (30.6, 44.6)	44.9 (44.1, 45.7)

## Racial Misclassification

Cancer estimates for AI/AN may be obscured when AI/AN are incorrectly classified as another race (usually White) in public data sources. Each year the NW Tribal Registry partners with the three northwest state cancer registries to correct AI/AN racial misclassification and improve cancer estimates for Northwest AI/AN. Please contact us if you are interested in additional cancer data for your community.

## Incidence and mortality 10 year trends, AI/AN and NHW

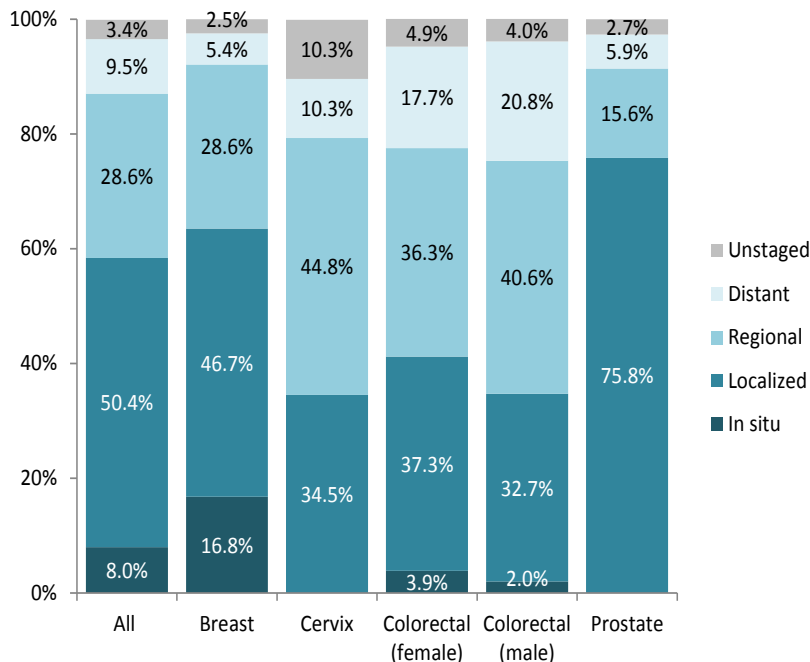


## Cancer screening measures: Portland Area IHS (Idaho, Oregon, & Washington, 2010 reporting year)

<b>56%</b> of women ages 21-64 had a <b>pap smear</b> in the past 3 years	<b>All IHS: 59%</b> <b>2010 Goal: 90%</b>
<b>38%</b> of women ages 52-64 had a <b>mammogram</b> in the past 2 years	<b>All IHS: 48%</b> <b>2010 Goal: 70%</b>
<b>38%</b> of patients ages 51-80 had <b>colorectal cancer screening</b> in the past year	<b>All IHS: 37%</b> <b>2010 Goal: 50%</b>
<b>27%</b> of tobacco users received <b>tobacco cessation counseling</b> in the past year	<b>All IHS: 25%</b> <b>2010 Goal: not determined</b>

The Breast, Cervical, and Colon Health Program offers FREE screening tests for women and men in Washington who qualify. For more information and eligibility criteria, call 1-888-438-2247

## Stage at diagnosis, screen-detectable cancers



Note: In situ and localized may be referred to as 'early stage'; regional and distant are often considered 'late stage'

## Data Notes

- Unless specified as non-Hispanic White (NHW), all data are for American Indian or Alaska Native (AI/AN alone or in combination with another race) residents of Washington, diagnosed from 2003-2007
- Unless specified, counts (n) and proportions (%) include all reportable cancer sites and stages
- Rates are interpreted as the number of cases (or deaths) that would occur in a population of 100,000 people over one year. All rates are age-adjusted to the 2000 US standard population.
- Incidence rates include invasive cancers plus in situ urinary bladder.
- Mortality rates are incidence-based and include a death from any type of cancer. These are based on cancers diagnosed from 1992-2007, and do not represent complete mortality.
- Blood cancers include leukemia, Hodgkin lymphoma, non-Hodgkin lymphoma, and multiple myeloma
- Data are from the Washington State Cancer Registry; compiled by Northwest Tribal Registry Project and Northwest Tribal Cancer Control Project, NPaiHB

## Cancer mortality, selected sites per 100,000 population

Cancer	n	Rate (95% CI)	NHW Rate (95% CI)
All Sites	691	204.3 (188.0, 221.9)	173.6 (172.0, 175.2)
Lung & Bronchus	171	53.3 (45.1, 62.9)	51.8 (50.9, 52.7)
Breast (female)	51	26.5 (19.3, 35.8)	20.0 (19.3, 20.7)
Colorectal	72	21.6 (16.4, 28.0)	15.2 (14.8, 15.7)
Prostate (male)	26	20.4 (12.7, 32.1)	18.8 (18.0, 19.7)
Blood cancers	61	16.8 (12.4, 22.6)	18.2 (17.7, 18.7)

## Resources

For more information about statistical terms and interpretation, see [www.cancer.gov/statistics/glossary](http://www.cancer.gov/statistics/glossary)  
 For more information on stage at diagnosis definitions, see [www.cancer.gov/cancertopics/factsheet/detection/staging](http://www.cancer.gov/cancertopics/factsheet/detection/staging)  
 Washington State Cancer Registry:  
<https://fortress.wa.gov/doh/wscr/>  
 Washington Breast, Cervical, and Colon Health Program:  
<http://www.doh.wa.gov/cfh/bcchp/default.htm>  
 Screening information from Indian Health Service



## For more information

Megan Hoopes, MPH  
 Northwest Tribal Registry Project Director  
 503-416-3261 or [mhoopes@npaihb.org](mailto:mhoopes@npaihb.org)