

1. Demographics

pg 14-15: Population

pg 16-17: Age distribution

pg 18-19: Educational attainment

pg 20-21: Economic indicators





Demographics provide information on the age, gender, and geographic distribution of a population. Demographics also include data on social and economic factors that influence people's health, including income levels, educational attainment, and employment status. Demographic information can help health researchers, planners, and healthcare providers understand the communities they serve, and identify factors that might explain health outcomes and disparities experienced by a population.

AI/AN make up about 2.8% of the population in the Northwestern states of Idaho, Oregon, and Washington. AI/AN in the Northwest are noticeably different from the general population on several demographic indicators¹, including the following:

- **AI/AN in the Northwest are younger than the general population.** The median age for AI/AN in Idaho, Oregon, and Washington is about seven years younger than the general population in these states.
- **AI/AN have lower levels of educational attainment than the general population.** About 16% of adult AI/AN have not completed a high school degree (or equivalent), compared to 10% of the general population.
- **AI/AN have lower income levels and higher poverty rates than the general population.** The median income for AI/AN in the Northwest is \$9,770 lower than the regional average. About 27% of AI/AN in the Northwest live in poverty, compared to 15.5% of the general population.

This section describes key demographic characteristics of AI/AN in Washington, and includes data on age distribution, geographic distribution, educational attainment, and economic indicators.

1. U.S. Census Bureau. American Community Survey 3-year Estimates, 2010-2012.

Population

In 2010, a total of 198,996 AI/AN were living in Washington state, which represents about 3% of the total state population (Table 1.1). Most of Washington's AI/AN population were living in counties that overlap with tribal lands and/or have large urban centers. This is shown in Figure 1.1, where dark blue shading indicates a larger AI/AN population. King County, which includes the Seattle metropolitan area, has the greatest number of AI/AN residents (N=37,724, or 19% of Washington's total AI/AN population).

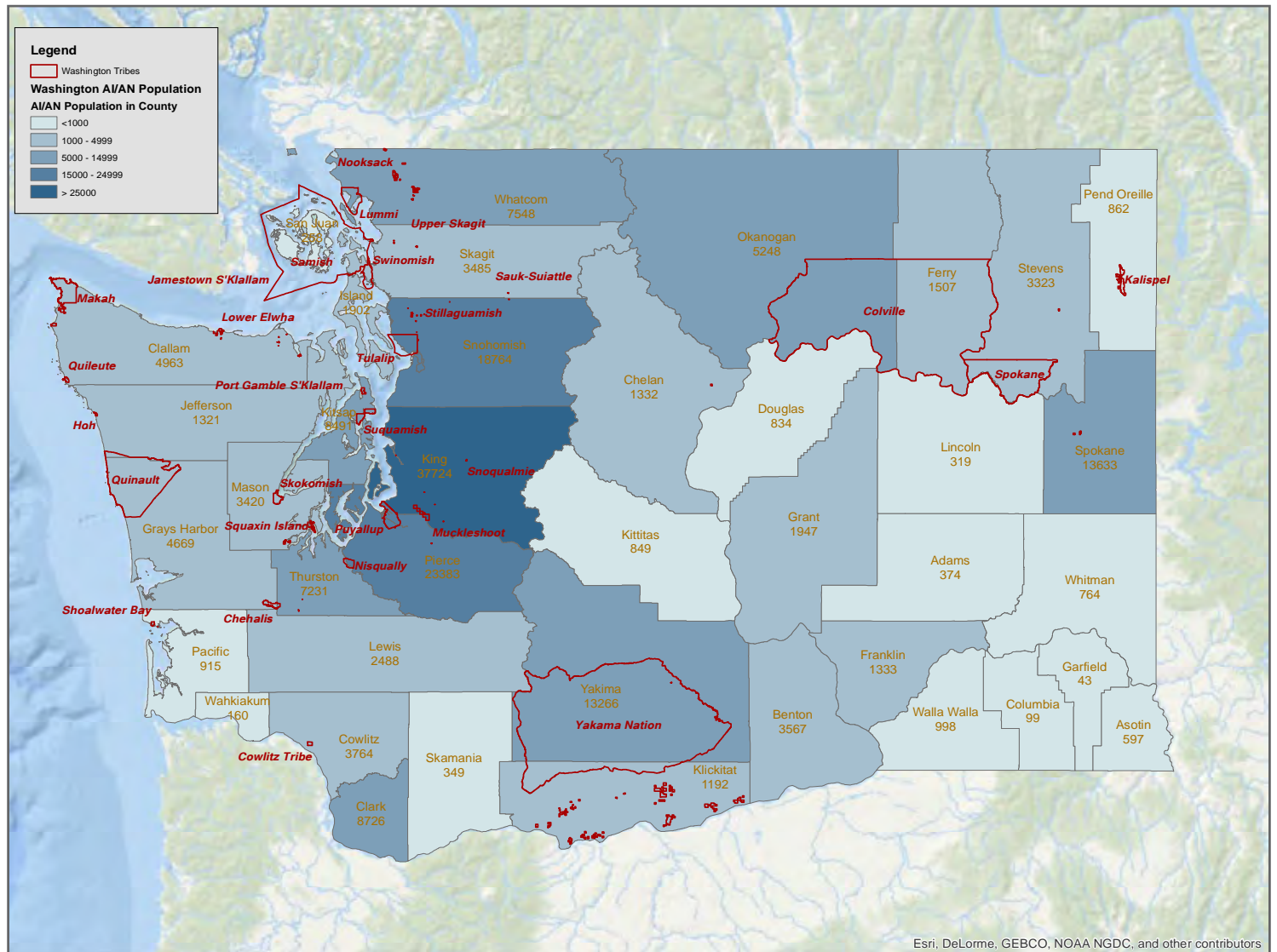
Table 1.1: Population by race and sex, Washington, 2010.

	Male Population N (%)	Female Population N (%)	Total Population N (%)
AI/AN	97,642 (2.9%)	101,356 (3.0%)	198,998 (3.0%)
NHW	2,420,941 (72.3%)	2,455,863 (72.8%)	4,876,804 (72.3%)
Other Races	831,124 (24.8%)	817,614 (24.2%)	1,666,738 (24.7%)
All Races	3,349,707 (100.0%)	3,374,833 (100.0%)	6,742,540 (100.0%)

Data Source: U.S. Census Bureau, 2010.

Data Notes: Data are from Census Summary File 2 Table QT-P1. AI/AN include people who identify as AI/AN alone or in combination with other races of both Hispanic and non-Hispanic ethnicity.

Figure 1.1: AI/AN population by county, Washington, 2007-2011.



Data Source: U.S. Census Bureau, American Community Survey 5-year estimates, 2007-2011.

Data Notes: AI/AN include people who identify as AI/AN alone or in combination with other races of both Hispanic and non-Hispanic ethnicity.

Age Distribution

AI/AN in Washington are younger than NHW in the state. In 2010, the median age for AI/AN was 28.8 years, which was 12.3 years younger than the median age for NHW (41.1 years). The age distribution for Washington AI/AN (Figure 1.2) is noticeably different than the age distribution for NHW in the state (Figure 1.3). A larger proportion of the AI/AN population is in the younger age groups, while a larger proportion of the NHW population is in the older age groups.

Data Source: U.S. Census Bureau, 2010.

Data Notes: Data are from Census Summary File 2 Table QT-P1. AI/AN include people who identify as AI/AN alone or in combination with other races of both Hispanic and non-Hispanic ethnicity.

Figure 1.2: Age distribution by sex for AI/AN, Washington, 2010.

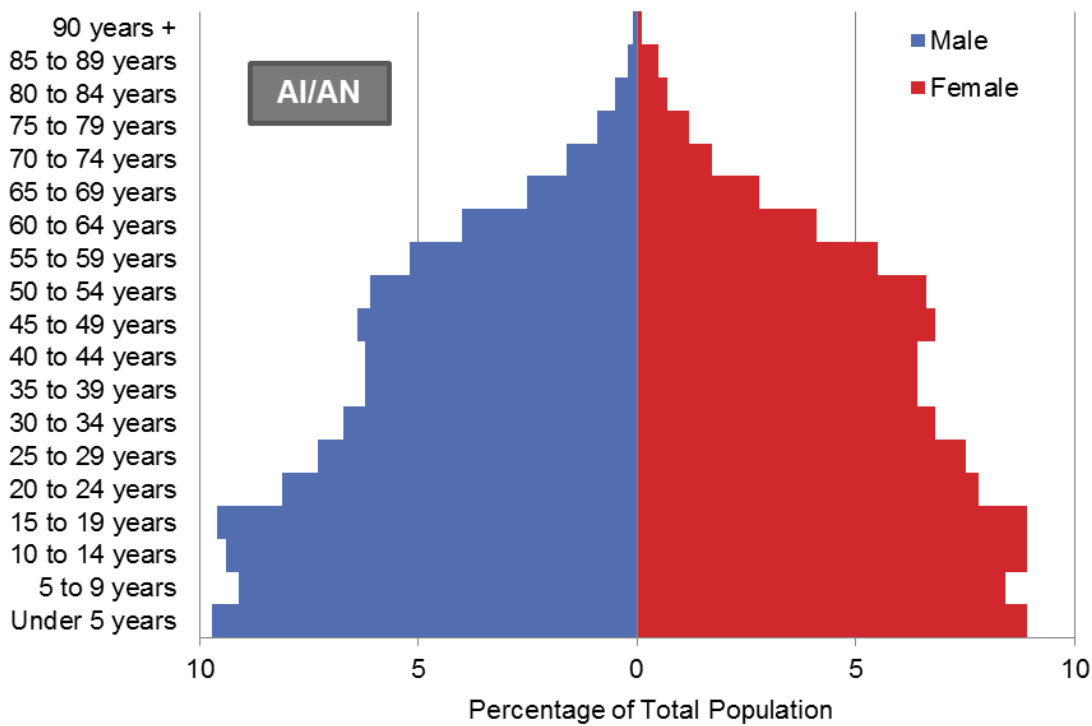
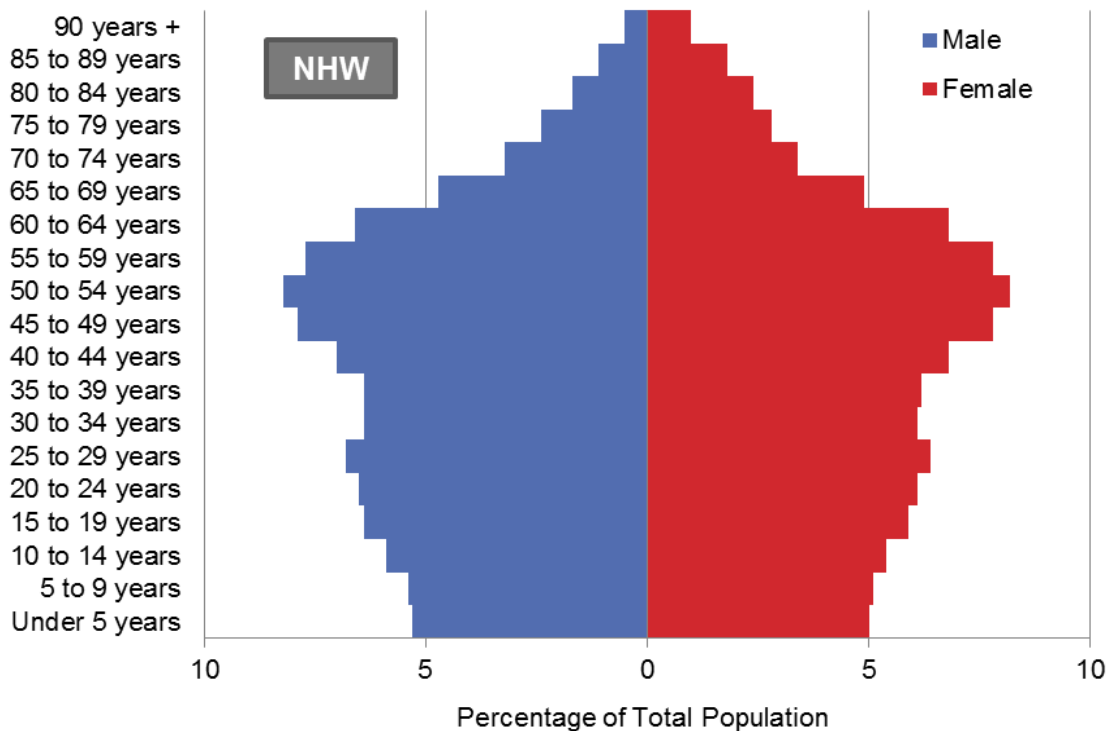


Figure 1.3: Age distribution by sex for NHW, Washington, 2010.



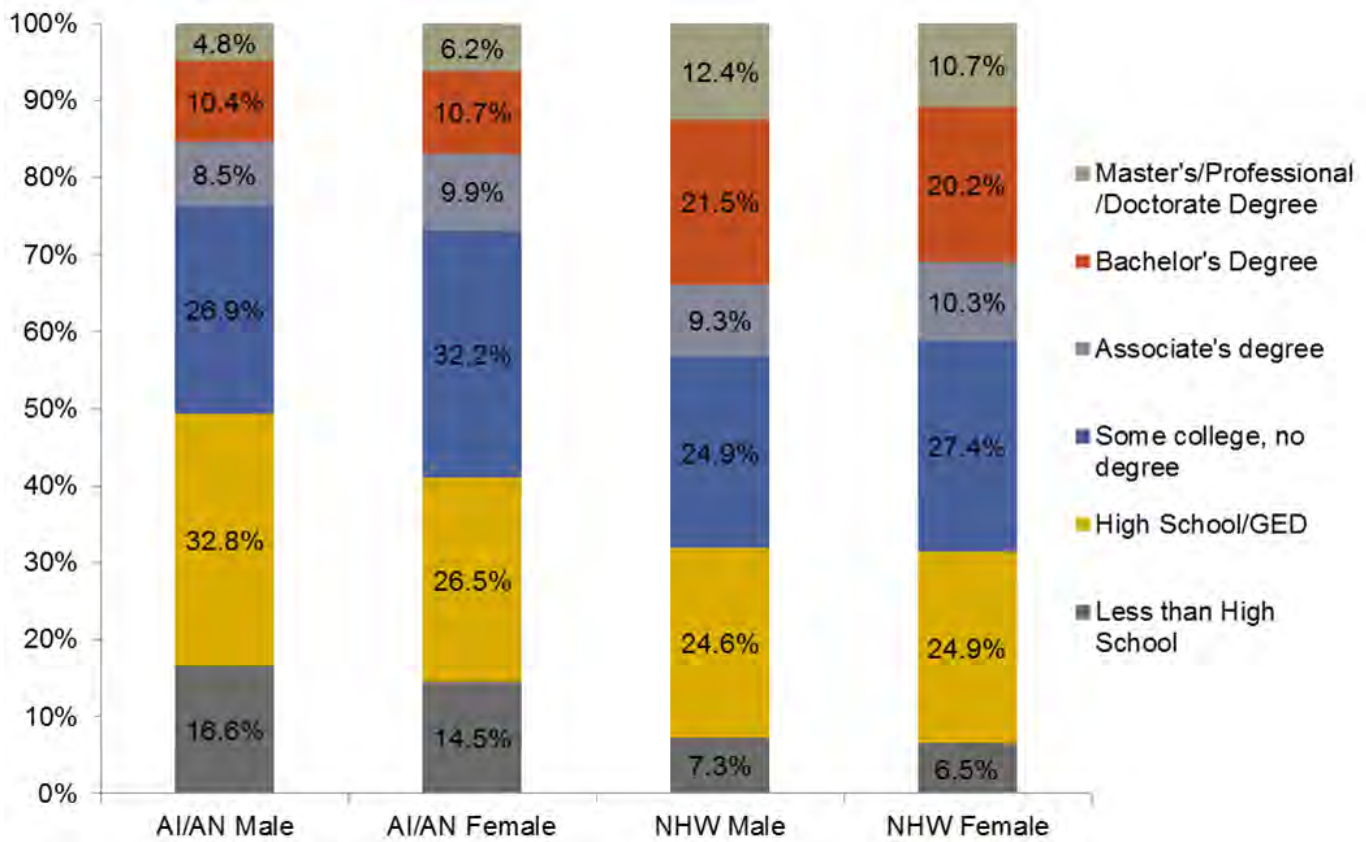
Educational Attainment

Figure 1.4 compares educational attainment for adult AI/AN and NHW in Washington. Compared to NHW, a higher percentage of AI/AN did not complete high school. About 33% of AI/AN males and 27% of AI/AN females had a high school diploma or GED as their highest degree of education, while less than 25% of NHW males and females had this level of educational attainment. AI/AN were more likely than NHW to have some college education but no degree. NHW males were most likely to have attained either a bachelor's or post-graduate degree (33.9%), followed by NHW females (30.9%), AI/AN females (16.9%), and AI/AN males (15.2%).

Data Source: American Community Survey (ACS), 2006-2010, selected population tables.

Data Notes: AI/AN include people who identify as AI/AN alone or in combination with other races of both Hispanic and non-Hispanic ethnicity.

Figure 1.4: Educational attainment for adults by race and sex, Washington, 2006-2010.



N (25yrs+): AI/AN males=49,864; AI/AN females=54,752; NHW males=1,674,125; NHW females=1,750,956.

GED = General Educational Development degree.

Economic Indicators

Table 1.2 shows some key economic indicators for AI/AN and NHW in Washington. From 2006-2010, the median income for AI/AN in Washington was almost \$18,000 lower than NHW in the state. AI/AN families, individuals, and children were more than twice as likely to live in poverty than NHW in Washington. From 2006-2010, almost 15% of AI/AN were unemployed, and over 24% received food stamp benefits.

Data Source: American Community Survey (ACS), 2006-2010, selected population tables.

Data Notes: AI/AN includes people who identify as AI/AN alone or in combination with other races of both Hispanic and non-Hispanic ethnicity.

Table 1.2: Economic indicators by race, Washington, 2006-2010.

Economic Indicator	AI/AN	NHW
Median Income	\$41,883	\$59,820
Percent of Families in Poverty	18.5%	5.8%
Percent of People in Poverty	22.8%	9.5%
Percent of Children[†] in Poverty	27.3%	10.7%
Percent Unemployed	14.9%	6.9%
Receive Food Stamp Benefits	24.2%	8.0%

† Under 18 years of age

