

# 1. Demographics

pg 13: Section description

---

pg 14-15: Population

---

pg 16-17: Age distribution

---

pg 18-19: Educational attainment

---

pg 20-21: Economic indicators

---





Demographics provide information on the age, gender, and geographic distribution of a population. Demographics also include data on social and economic factors that influence people's health, including income levels, educational attainment, and employment status. Demographic information can help health researchers, planners, and healthcare providers understand the communities they serve, and identify factors that might explain health outcomes and disparities experienced by a population.

AI/AN make up about 2.8% of the population in the Northwestern states of Idaho, Oregon, and Washington. AI/AN in the Northwest are noticeably different from the general population on several demographic indicators<sup>1</sup>, including the following:

- **AI/AN in the Northwest are younger than the general population.** The median age for AI/AN in Idaho, Oregon, and Washington is about seven years younger than the general population in these states.
- **AI/AN have lower levels of educational attainment than the general population.** About 16% of adult AI/AN have not completed a high school degree (or equivalent), compared to 10% of the general population.
- **AI/AN have lower income levels and higher poverty rates than the general population.** The median income for AI/AN in the Northwest is \$9,770 lower than the regional average. About 27% of AI/AN in the Northwest live in poverty, compared to 15.5% of the general population.

This section describes key demographic characteristics of AI/AN in Oregon, and includes data on age distribution, geographic distribution, educational attainment, and economic indicators.

<sup>1</sup> U.S. Census Bureau. American Community Survey 3-year Estimates, 2010-2012.

# Population

In 2010, a total of 109,223 AI/AN were living in Oregon, which represents about 3% of the total state population (Table 1.1). Most of Oregon's AI/AN population were living in counties that overlap with tribal lands and/or have large urban centers. This is shown in Figure 1.1, where the darker shading indicates a larger AI/AN population. Jefferson County had the greatest number of AI/AN residents (N=19,672, or 18% of the total AI/AN population in the state).

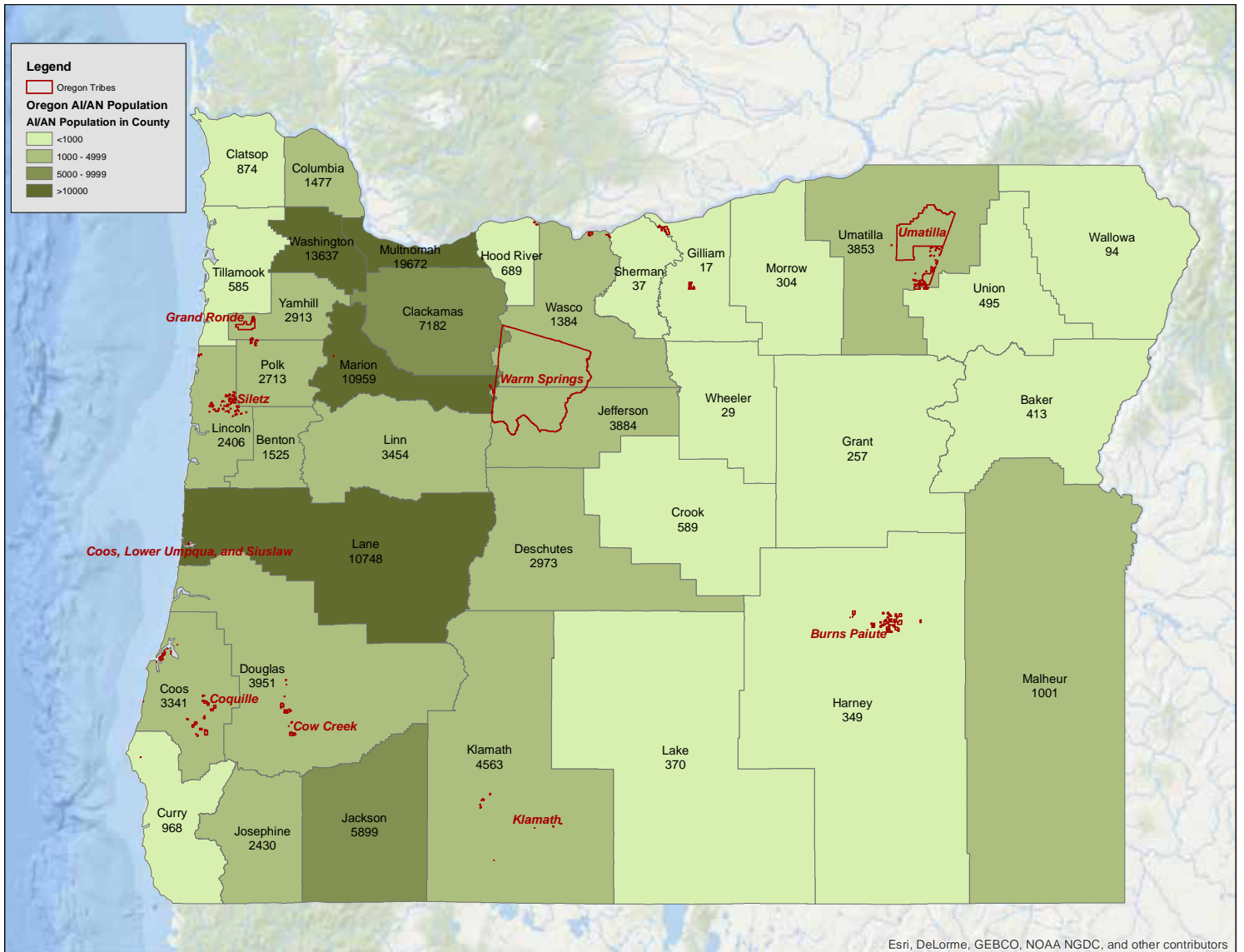
**Table 1.1: Population by race and sex, Oregon, 2010.**

	Male Population N (%)	Female Population N (%)	Total Population N (%)
AI/AN	54,141 (2.9%)	55,082 (2.8%)	109,223 (2.9%)
NHW	1,476,562 (77.9%)	1,529,286 (79.0%)	3,005,848 (78.5%)
Other Races	365,299 (19.3%)	350,704 (18.1%)	716,003 (18.7%)
All Races	1,896,002 (100.0%)	1,935,072 (100.0%)	3,831,074 (100.0%)

**Data Source:** U.S. Census Bureau, 2010.

**Data Notes:** Data are from Census Summary File 2 Table QT-P1. AI/AN include people who identify as AI/AN alone or in combination with other races of both Hispanic and non-Hispanic ethnicity.

Figure 1.1: AI/AN population by county, Oregon, 2007-2011.



**Data Source:** U.S. Census Bureau, American Community Survey 5-year estimates, 2007-2011.

**Data Notes:** AI/AN include people who identify as AI/AN alone or in combination with other races of both Hispanic and non-Hispanic ethnicity.

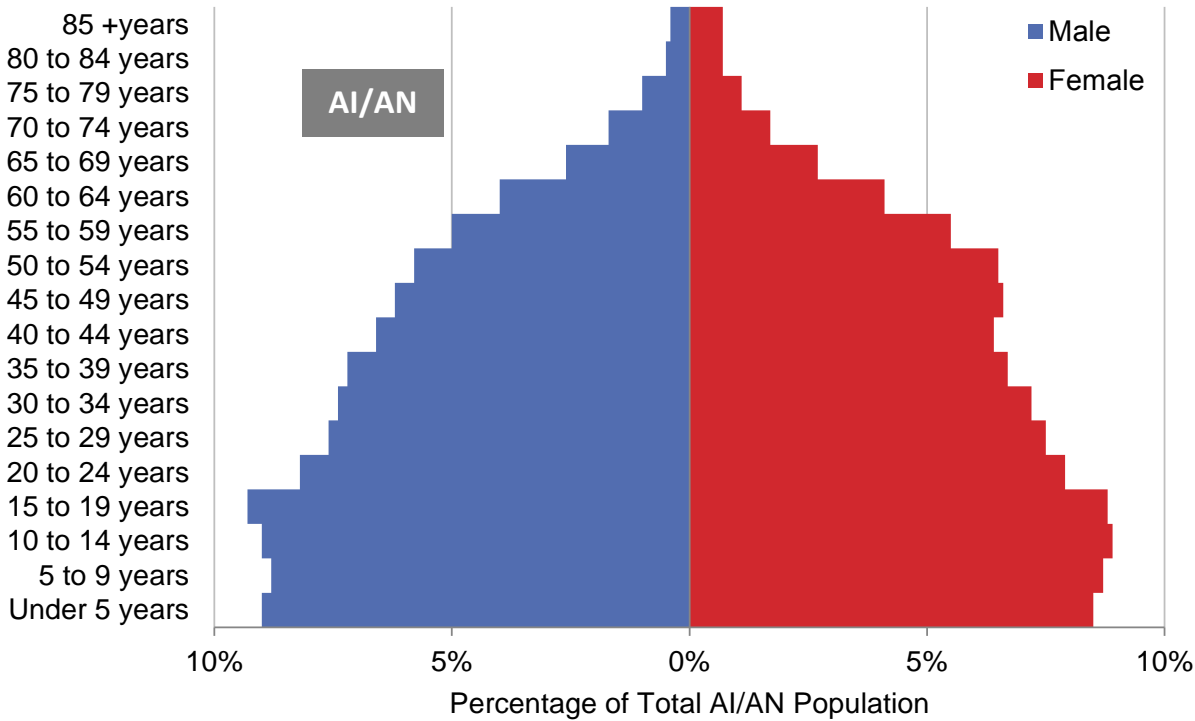
# Age Distribution

AI/AN in Oregon were younger than NHW in the state. In 2010, the median age for AI/AN was 30.3 years, which was 10.7 years younger than the median age for NHW (41.0 years). The age distribution for Oregon AI/AN (Figure 1.2) was noticeably different than the age distribution for NHW in the state (Figure 1.3). A larger proportion of the AI/AN population was in the younger age groups, while a larger proportion of the NHW population was in the older age groups. In both race groups, females were older on average than males.

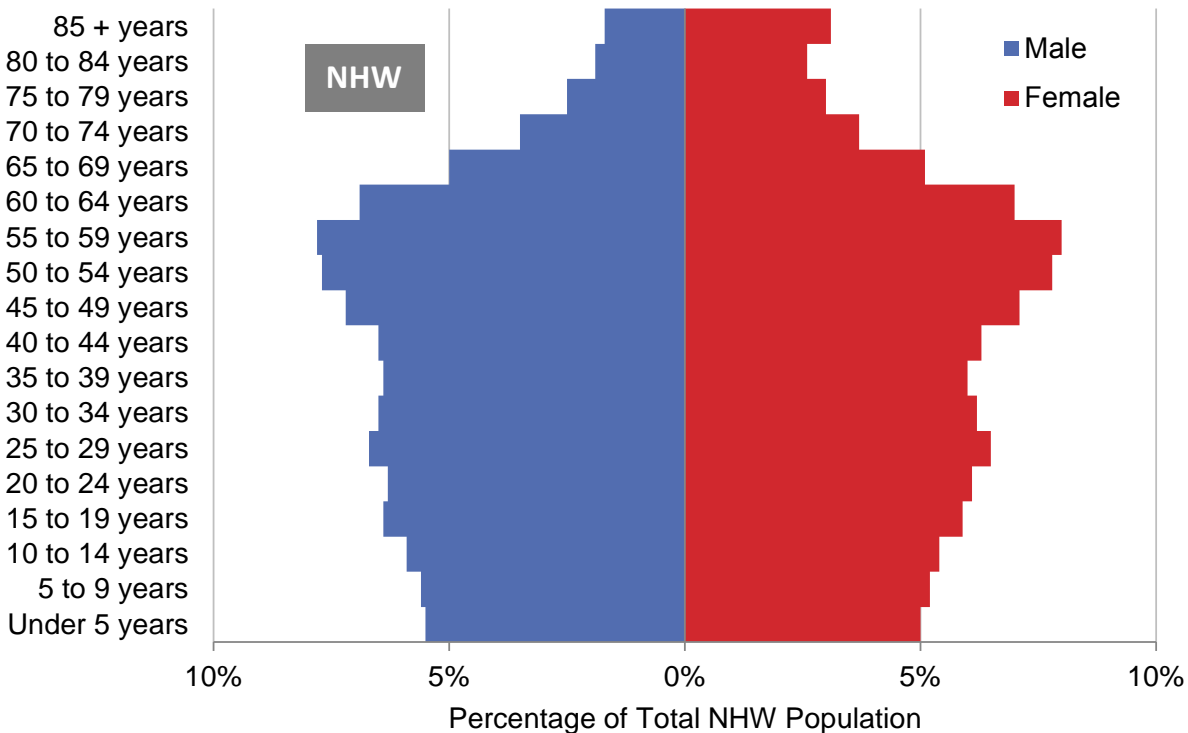
**Data Source:** U.S. Census Bureau, 2010.

**Data Notes:** Data are from Census Summary File 2 Table QT-P1. AI/AN include people who identify as AI/AN alone or in combination with other races of both Hispanic and non-Hispanic ethnicity.

**Figure 1.2: Age distribution by sex for AI/AN, Oregon, 2010.**



**Figure 1.3: Age distribution by sex for NHW, Oregon, 2010.**



# Educational Attainment

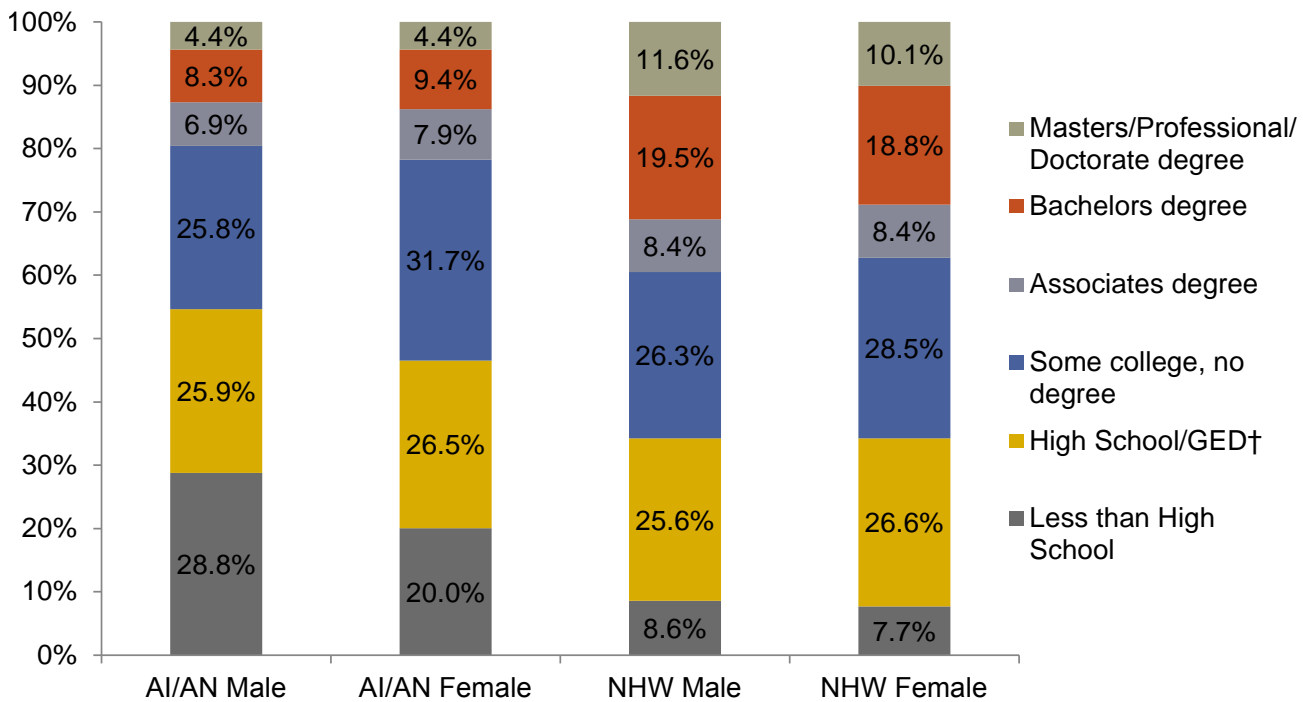
Figure 1.3 compares educational attainment for adult AI/AN and NHW in Oregon. Compared to NHW, a higher percentage of AI/AN did not complete high school. About 29% of AI/AN males and 20% of AI/AN females did not complete high school, while less than 9% of NHW males and 8% of NHW females had this level of educational attainment. AI/AN were less likely than NHW to have a bachelor's, master's, professional, or doctorate degree. NHW males were most likely to have attained either a bachelor's or post-graduate degree (31.1%) followed by NHW females (28.9%), AI/AN females (13.8%), and AI/AN males (12.7%).

**Data Source:** American Community Survey (ACS), 2006-2010, selected population tables.

**Data Notes:** AI/AN include people who identify as AI/AN alone or in combination with other races of both Hispanic and non-Hispanic ethnicity.



**Figure 1.4: Educational attainment for adults by race and sex, Oregon, 2006-2010.**



N (25yrs+): AI/AN males=33,155; AI/AN females=33,530; NHW males=1,033,596; NHW females=1,103,010.

† GED = General Educational Development degree.

# Economic Indicators

Table 1.2 shows some key economic indicators for AI/AN and NHW in Oregon. From 2006-2010, the median income for AI/AN in Oregon was over \$13,000 lower than NHW in the state. AI/AN families and individuals were over twice as likely to live in poverty, and children were nearly twice as likely to live in poverty than NHW in Oregon. From 2006-2010, almost 10% of AI/AN were unemployed, and over 27% received food stamp benefits.

**Data Source:** American Community Survey (ACS), 2006-2010, selected population tables.

**Data Notes:** AI/AN includes people who identify as AI/AN alone or in combination with other races of both Hispanic and non-Hispanic ethnicity.

Table 1.2: Economic indicators by race, Oregon, 2006-2010.

<b>Economic Indicator</b>	<b>AI/AN</b>	<b>NHW</b>
<b>Median Income</b>	\$36,867	\$50,093
<b>Percent of Families in Poverty</b>	21.0%	8.5%
<b>Percent of People in Poverty</b>	25.9%	12.7%
<b>Percent of Children<sup>†</sup> in Poverty</b>	30.1%	16.3%
<b>Percent Unemployed</b>	9.1%	5.4%
<b>Receive Food Stamp Benefits</b>	27.6%	5.4%

<sup>†</sup>Under 18 years of age

