

Dispense Drug Validation EHRp14/APSP1018

In the normal medication ordering process, it is *always* recommended to pick from the list of available dosages. If the dosage you want is not available speak with the pharmacy informaticist managing your local drug file about adding the needed dosage(s).

The screenshot shows a 'Medication Order' window for 'SIMVASTATIN TAB'. The 'Dosage' section is active, displaying a list of dosages (10MG, 20MG, 40MG, 80MG) and a 'Route' list (ORAL, J TUBE, G TUBE). The 'Schedule' list includes QPM, QAC&QHS (ACCU), QAM, QAM (NOVOLOG), QAM (REG INSULIN), QAM BB, QDAY, QHS, QHS (INSULIN), QID, and QPM. The 'Patient Instructions' field contains 'FOR CHOLESTEROL'. The 'Days Supply' is 30, 'Qty (TAB)' is 30, and 'Refills' is 11. The 'Clinical Indication' is 'Hypercholesterolemia E78.0'. The 'Priority' is 'ROUTINE'. The 'Pharmacy' is 'HappygoluckyalwaysopenservesallRx 12345 Mountain Road Off St. Patricks Hig'. The 'Notes to Pharmacist' field is empty. The 'ADRs' field contains: 'SIMVASTATIN 20MG TAB', '*SIMVASTATIN TAB 20MG', 'TAKE ONE (1) TABLET BY MOUTH EVERY EVENING FOR CHOLESTEROL', 'Quantity: 30 Tablet Days: 30 Refills: 11 *Chronic Med: YES Dispense as Written: NO Indication: Hypercholesterolemia Pharmacy: HappygoluckyalwaysopenservesallRx 12345 Mountain Road Off St. Patricks Highway Alexandria VA 22315 Date Written: 26-Nov-2014', 'RECEIVING PHARMACY: HappygoluckyalwaysopenservesallRx 12345 Mountain Road Off St. Patricks Highway, Alexandria, VA 22315 P:7039212121', 'PRESCRIBER: STEARLE, CARLA G 2011 DEMO HOSPITAL 5300 HOMESTEAD, ALBUQUERQUE, NEW MEXICO 87110 P:3012220908', and '*Order elements that are NOT transmitted to Surescripts Pharmacy'. The 'Accept Order' button is highlighted.

Figure 1: Medicator Order

What if the dosage is NOT available? For the **short-term until the dosage can be added** the provider can FREE-TEXT a dose into the dosage area.

Dispense Drug Validation EHRp14/APSP1018

Medication Order: SIMVASTATIN TAB

Change

Change

Dosage	Route	Schedule
5MG	ORAL	QPM
10MG	ORAL	QAC:QHS (ACCU)
20MG	J TUBE	QAM
40MG	G TUBE	QAM (NOVOLOG)
80MG		QAM (REG INSULIN)
		QAM BB
		QDAY
		QHS
		QHS (INSULIN)
		QID
		QPM

Patent Instructions: FOR CHOLESTEROL

Days Supply: 30 Qty (TAB): 30 Refills: 11 Clinical Indication: Hypercholesterolemia E78.0 Chronic Med Dispense as Written

Pick Up: Clinic Mail Window Outside Pharmacy - eRx Outside Pharmacy - Print Priority: ROUTINE

Pharmacy: HappygoluckyalwaysopenervesallRx 12345 Mountain Road Off St. Patricks Hig

Notes to Pharmacist:

SIMVASTATIN TAB
TAKE 5MG BY MOUTH EVERY EVENING FOR CHOLESTEROL
Quantity: 30 Days: 30 Refills: 11 *Chronic Med: YES Dispense as Written: NO Indication:
Hypercholesterolemia Pharmacy: HappygoluckyalwaysopenervesallRx 12345 Mountain Road Off St.
Patricks Highway Alexandria VA 22315 Date Written: 26-Nov-2014

RECEIVING PHARMACY: HappygoluckyalwaysopenervesallRx
12345 Mountain Road Off St. Patricks Highway, Alexandria, VA 22315
P: 7039212121

PRESCRIBER:
STEARLE, CARLA G
2011 DEMO HOSPITAL
5300 HOMESTEAD, ALBUQUERQUE, NEW MEXICO 87110
P: 3012220908

*Order elements that are NOT transmitted to Surescript Pharmacy

ADR: Accept Order Quit

Figure 2: Free Text Dosage

Upon clicking **Accept Order** the system will prompt the provider for clarification. At least one choice will appear in the list based on the drug file set-up. It is mandatory that the provider pick which dispense drug they are ordering for the patient. In this example, $\frac{1}{2}$ of a 10mg tablet will achieve the desired dosage of "5MG"

Dispense Drug Validation EHRp14/APSP1018

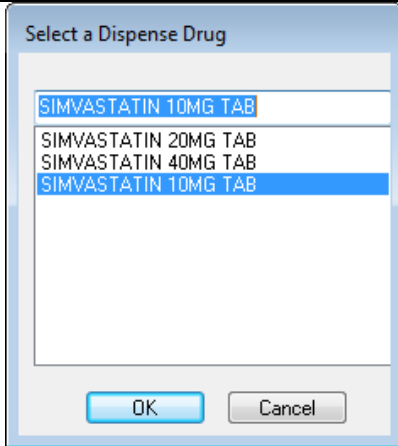


Figure 3: Select a Dispense Drug dialog

The medication can be signed as usual and should complete the “auto-finish” process accurately resulting in a successful electronic transmission (or the ability to print the prescription) for outside pharmacies. The order can be signed as usual and sent to an in-house RPMS pharmacy if available.

****REMINDERS:**

- This new functionality should ONLY be used when a dosage is not readily available.
- Avoid free-texting dosages that cannot be achieved by the dispense drugs that are available. For example, a dosage of 5.5mg is not possible when the only dispense drugs listed are 5mg and 2mg tablets. The dosage should MAKE SENSE and link up easily to an available dispense drug!
- Communication with the pharmacy informaticist about needed changes to the dosages file is highly recommended. This functionality ideally is not used very often if the dosages are optimized to meet the provider’s requests and safety recommendations.
- As previously recommended, avoid putting dosage information into the Notes to Pharmacist box. This new functionality will provide some extra flexibility in achieving the desired final SIG and result in successful transmissions to outside pharmacies.
- This functionality is available to help resolve issues of missing dosages in the drug file but should not be used on a routine basis to achieve desired sig.
- In-house RPMS Pharmacies: This should eliminate the issues you may have experienced in which you see “No Dispense Drug” selected when finishing orders as well as issues with CII medications printing with no drug strength.
- We simply want everyone to be aware that, with this functionality, it is somewhat easier for providers to order doses that are not clinically recommended or doses that do not make sense. If you do not find a dose in the list that you want, this could be a red flag that you may have a different drug selected or have the wrong dose in your mind. Take a moment to double check.
- Here are some examples that could be successfully ordered. They are examples of “what not to do.”

Dispense Drug Validation EHRp14/APSP1018

Ibuprofen – Can free text a dose above max dose for the drug chosen. 2 tabs (1600mg) or 3 tabs (2400 mg) of Ibuprofen 800mg is not a safe dose.

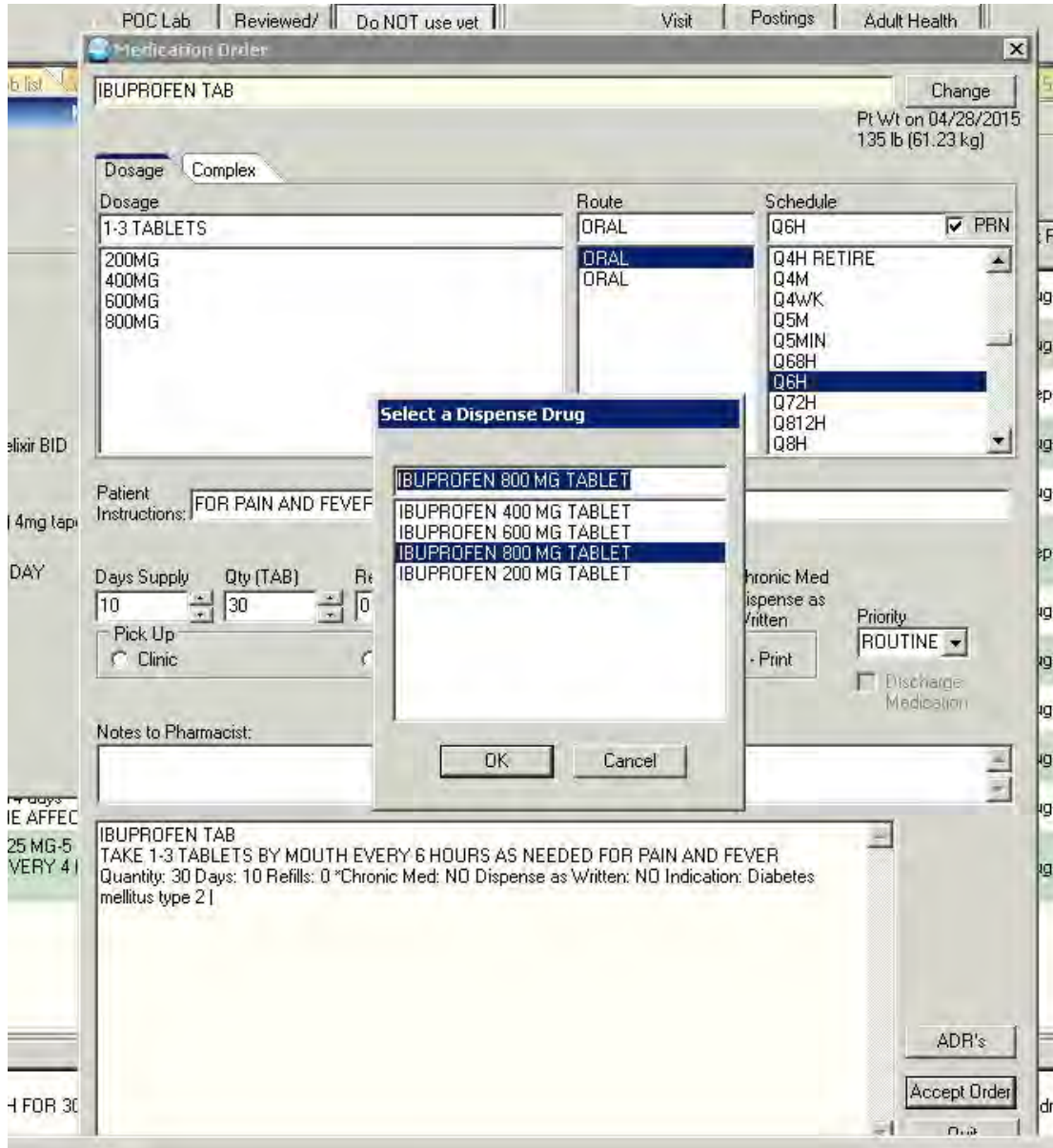


Figure 4: Ibuprofen dosage example

Dispense Drug Validation EHRp14/APSP1018

Warfarin – free texting a dose and then choosing a strength that does not make sense with the dose. This can result in a very confusing order that could be a patient safety issue.

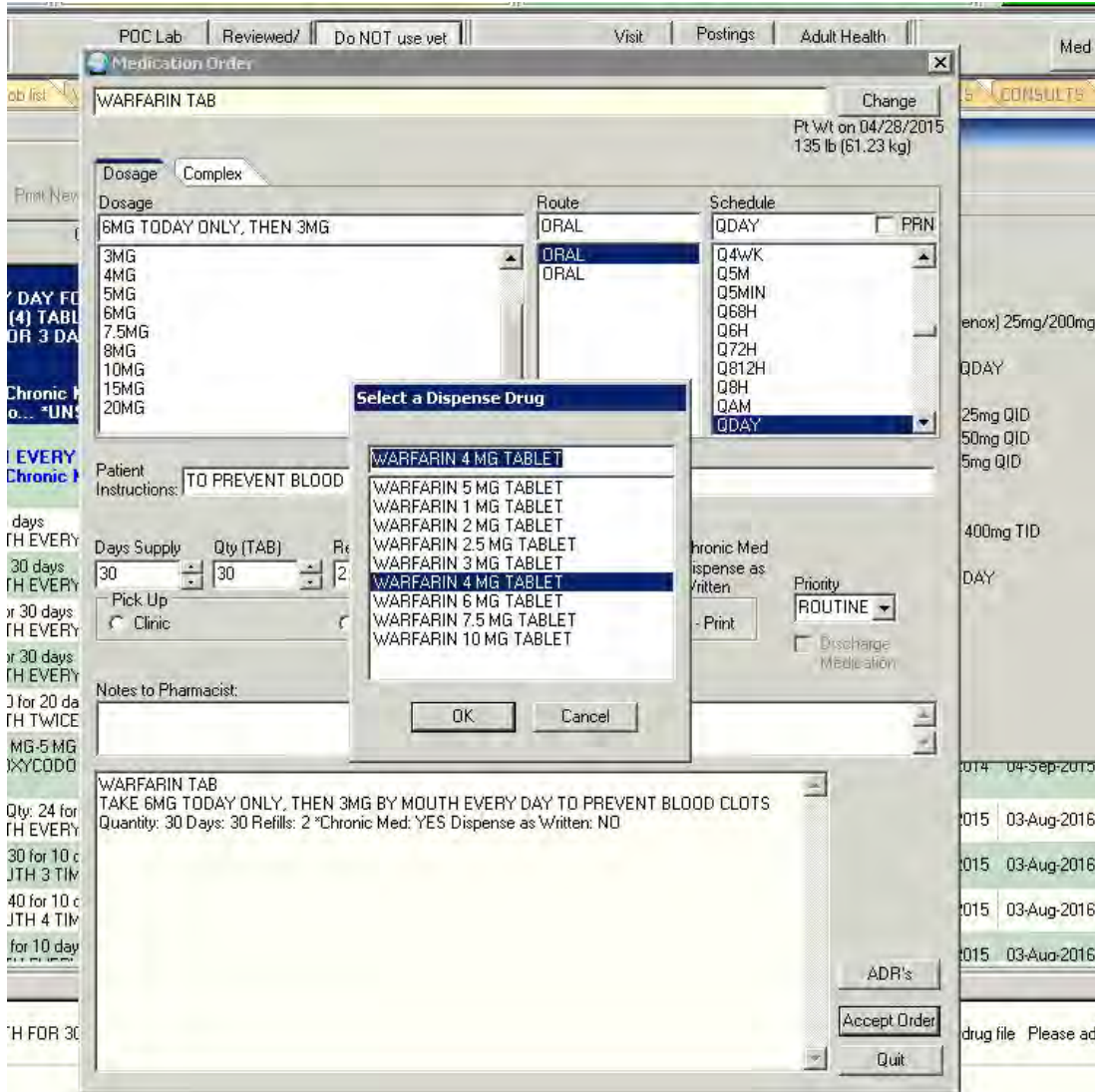


Figure 5: Warfarin dosage example

							Remaining	Rx #	Provider
	ACETAMINOPHEN/HYDROCODONE 325 MG-5 MG TABLET Qty: 12 for 3 days Sig: TAKE 4-5 TABLETS BY MOUTH EVERY 4 HOURS AS NEEDED FOR PAIN (MAXIMUM DAILY DOSE = 12 TABLETS)	Active		04-Aug-2015	04-Aug-2015	04-Aug-2016	0	X58047	ADAMS,ROBERT C
✓	WARFARIN 4 MG TABLET Qty: 30 for 30 days Sig: TAKE 6MG TODAY ONLY, THEN 3MG BY MOUTH EVERY DAY TO PREVENT BLOOD CLOTS	Active		04-Aug-2015	04-Aug-2015	04-Aug-2016	2	X58050	ADAMS,ROBERT C
	PREDNISONE 1MG TAB Qty: 32 for 15 days Sig: TAKE TWO (2) TABLETS BY MOUTH EVERY DAY FOR 3 DAYS, THEN TAKE THREE (3) TABLETS EVERY DAY FOR 3 DAYS, THEN TAKE 4 TABLETS EVERY DAY FOR 3 DAYS, THEN TAKE ONE (1) TABLET EVERY DAY FOR 3 DAYS, THEN TAKE 2-1MG TABLETS Q-OTHER DAY FOR 3 DAYS FOR INFLAMMATION OR ALLERGY	Active		04-Aug-2015	04-Aug-2015	04-Aug-2016	0	X58049	ADAMS,ROBERT C
	IBUPROFEN 800 MG TABLET Qty: 30 for 10 days Sig: TAKE 1-3 TABLETS BY MOUTH EVERY 6 HOURS AS NEEDED FOR PAIN AND FEVER	Active		04-Aug-2015	04-Aug-2015	04-Aug-2016	0	X58048	ADAMS,ROBERT C

Figure 6: Warfarin example