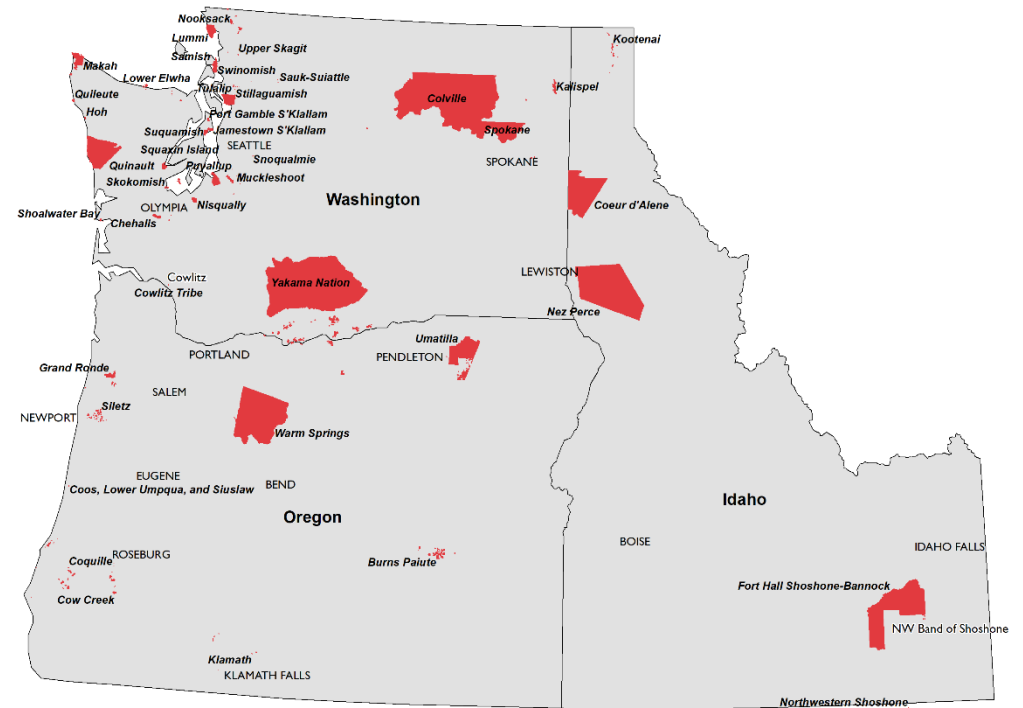


# Mortality Data for American Indians & Alaska Natives in the Northwest

Issued October 2019



**NPAIHB**  
Indian Leadership for Indian Health

**Leading Causes of Death, 2014-2016**  
**Northwest Region (Idaho, Oregon, and Washington)**  
**Ages 1 and older**

<b>Rank</b>	<b>American Indian/Alaska Native</b>		<b>Non-American Indian/Alaska Native</b>	
<b>1</b>	Major Cardiovascular Diseases	23.4% (1,337)	Major Cardiovascular Diseases	27.7% (81,868)
<b>2</b>	Cancer	18.9% (1,081)	Cancer	23.1% (68,286)
<b>3</b>	Unintentional injuries	10.7% (614)	Chronic Lower Respiratory Diseases	5.9% (17,289)
<b>4</b>	Chronic Lower Respiratory Diseases	6.2% (356)	Unintentional injuries	5.6% (16,477)
<b>5</b>	Chronic Liver Disease & Cirrhosis	5.5% (317)	Alzheimer's Disease	5.6% (16,475)
<b>6</b>	Diabetes	4.7% (270)	Diabetes	3.2% (9,479)
<b>7</b>	Suicide	3.5% (202)	Suicide	2.2% (6,422)
<b>8</b>	Alzheimer's Disease	2.2% (124)	Chronic Liver Disease & Cirrhosis	1.7% (4,929)
<b>9</b>	Influenza & Pneumonia	1.4% (79)	Influenza & Pneumonia	1.4% (4,212)
<b>10</b>	Nephritis	1.2% (71)	Other Respiratory Diseases	1.3% (3,889)
<b>Total deaths</b>	<b>5,718</b>		<b>295,098</b>	

(n) = number of deaths

**Leading Causes of Death by Sex, 2014-2016  
Northwest Region (Idaho, Oregon, and Washington)  
American Indians/Alaska Natives, Ages 1 and older**

<b>Rank</b>	<b>Males</b>		<b>Females</b>	
<b>1</b>	Major Cardiovascular Diseases	22.8% (693)	Major Cardiovascular Diseases	24.0% (644)
<b>2</b>	Cancer	18.4% (559)	Cancer	19.5% (522)
<b>3</b>	Unintentional injuries	12.5% (380)	Unintentional injuries	8.7% (234)
<b>4</b>	Chronic Liver Disease & Cirrhosis	6.0% (182)	Chronic Lower Respiratory Diseases	7.2% (192)
<b>5</b>	Chronic Lower Respiratory Diseases	5.4% (164)	Chronic Liver Disease & Cirrhosis	5.0% (135)
<b>6</b>	Suicide	4.9% (148)	Diabetes	4.8% (128)
<b>7</b>	Diabetes	4.7% (142)	Alzheimer's Disease	3.2% (87)
<b>8</b>	Other Respiratory Diseases	1.4% (42)	Suicide	2.0% (54)
<b>9</b>	Nephritis	1.4% (41)	Influenza & Pneumonia	1.5% (40)
<b>10</b>	Influenza & Pneumonia	1.3% (39)	Septicemia	1.3% (36)
<b>Total deaths</b>	<b>3,035</b>		<b>2,683</b>	

(n) = number of deaths

**Leading Causes of Death by Age Group, 2014-2016**  
**Northwest Region (Idaho, Oregon, Washington)**  
**American Indians/Alaska Natives, Ages 1 and older**

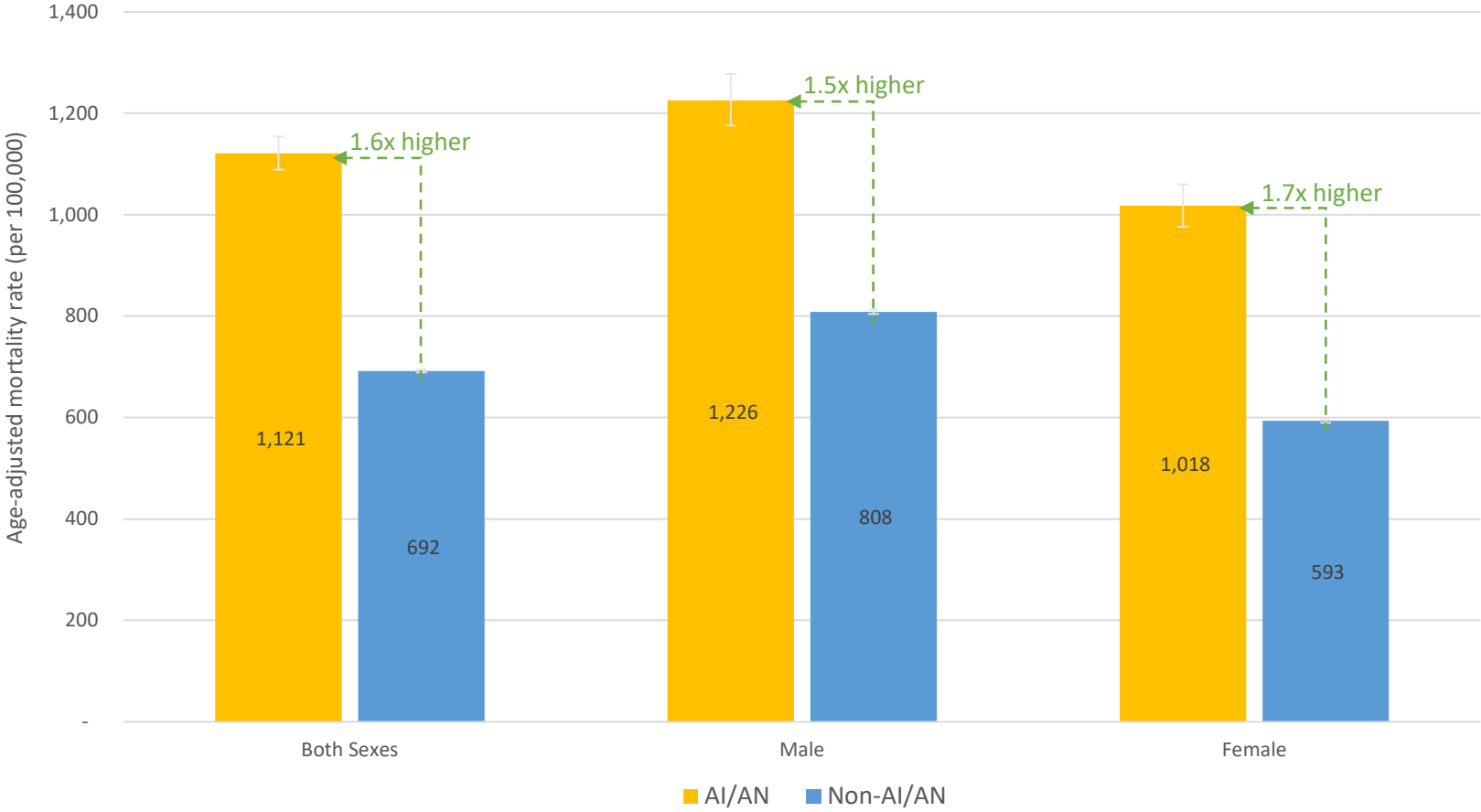
Rank	Age Group								
	<1	1-4	5-14	15-24	25-34	35-44	45-54	55-64	65+
1	Birth Defects	Unintentional Injuries	Unintentional Injuries	Unintentional Injuries	Unintentional Injuries	Unintentional Injuries	Cardiovascular Diseases	Cancer	Cardiovascular Diseases
2	Sudden Infant Death Syndrome	Homicide	Homicide	Suicide	Suicide	Chronic Liver Disease & Cirrhosis	Unintentional Injuries	Cardiovascular Diseases	Cancer
3	Unintentional Injuries	Cancer	Cancer	Homicide	Cardiovascular Diseases	Cardiovascular Diseases	Cancer	Chronic Liver Disease/ Unintentional Injuries (Tied)	Chronic Lower Respiratory Diseases
4	Maternal Pregnancy Complications			Cancer	Chronic Liver Disease & Cirrhosis	Suicide	Chronic Liver Disease & Cirrhosis	Chronic Lower Respiratory Diseases	Diabetes
5	Short Gestation & Low Birth Weight			Cardiovascular Diseases	Homicide	Cancer	Suicide	Diabetes	Alzheimer's Disease
6	Respiratory Diseases				Cancer	Diabetes	Diabetes	Viral Hepatitis	Unintentional Injuries
7					Diabetes	Homicide	Viral Hepatitis	Influenza & Pneumonia	Chronic Liver Disease & Cirrhosis
8					Chronic Lower Respiratory Diseases	Legal Intervention	Chronic Lower Respiratory Diseases	Suicide	Nephritis
9					Gallbladder Diseases/ HIV (Tied)	Septicemia	Influenza & Pneumonia	Nephritis	Influenza & Pneumonia
10						Influenza & Pneumonia	Homicide	Septicemia	Septicemia
<b>Total Deaths</b>	<b>84</b>	<b>22</b>	<b>28</b>	<b>136</b>	<b>266</b>	<b>383</b>	<b>696</b>	<b>1,159</b>	<b>3,028</b>

Data suppressed when counts were less than 5

**Leading Causes of Death by Year, 2007-2016**  
**Northwest Region (Idaho, Oregon, and Washington)**  
**American Indians/Alaska Natives, Ages 1 and older**

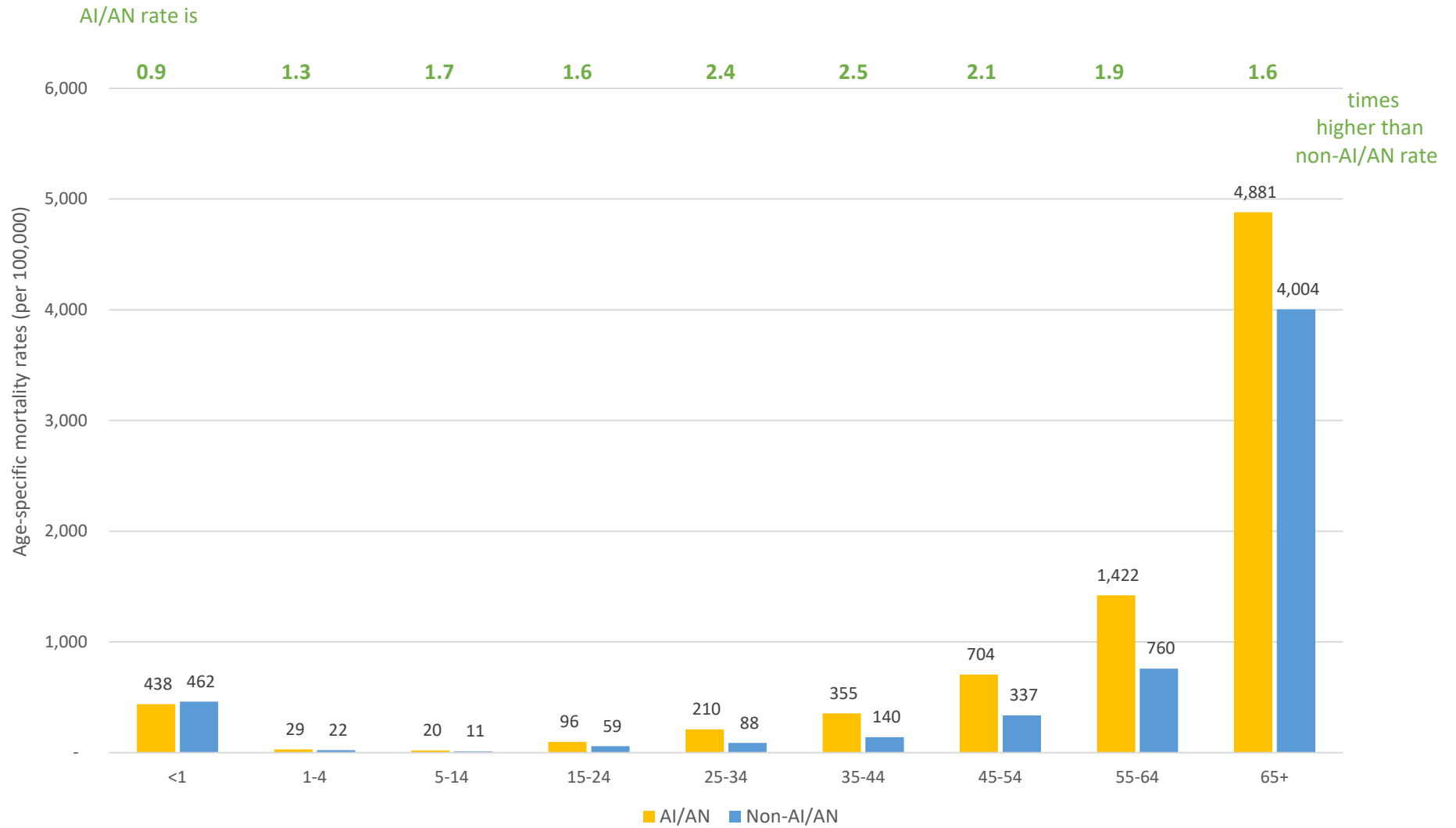
	Year									
Rank	2007	2008	2009	2010	2011	2012	2013	2014	2015	2016
1	Cardiovascular Diseases (24.6%)	Cardiovascular Diseases (22.6%)	Cardiovascular Diseases (24.5%)	Cardiovascular Diseases (23.7%)	Cardiovascular Diseases (25.0%)	Cardiovascular Diseases (22.6%)	Cardiovascular Diseases (24.3%)	Cardiovascular Diseases (23.4%)	Cardiovascular Diseases (23.1%)	Cardiovascular Diseases (23.6%)
2	Cancer (18.9%)	Cancer (19.8%)	Cancer (19.9%)	Cancer (21.0%)	Cancer (19.3%)	Cancer (19.8%)	Cancer (19.1%)	Cancer (19.2%)	Cancer (19.2%)	Cancer (18.4%)
3	Unintentional Injuries (11.8%)	Unintentional Injuries (11.5%)	Unintentional Injuries (11.9%)	Unintentional Injuries (10.9%)	Unintentional Injuries (10.7%)	Unintentional Injuries (10.9%)	Unintentional Injuries (9.9%)	Unintentional Injuries (10.3%)	Unintentional Injuries (10.9%)	Unintentional Injuries (10.9%)
4	Chronic Liver Disease & Cirrhosis (5.9%)	Chronic Liver Disease & Cirrhosis (5.8%)	Chronic Lower Resp. Disease (5.2%)	Chronic Lower Resp. Disease (5.5%)	Chronic Liver Disease & Cirrhosis (6.5%)	Chronic Lower Resp. Disease (6.1%)	Chronic Liver Disease & Cirrhosis (7.0%)	Chronic Liver Disease & Cirrhosis (5.7%)	Chronic Lower Resp. Disease (6.6%)	Chronic Lower Resp. Disease (6.9%)
5	Chronic Lower Resp. Disease (5.5%)	Diabetes (5.4%)	Chronic Liver Disease & Cirrhosis (4.7%)	Chronic Liver Disease & Cirrhosis (5.5%)	Chronic Lower Resp. Disease (5.7%)	Diabetes (5.9%)	Chronic Lower Resp. Disease (5.9%)	Chronic Lower Resp. Disease (5.1%)	Chronic Liver Disease & Cirrhosis (5.8%)	Chronic Liver Disease & Cirrhosis (5.1%)
6	Diabetes (5.5%)	Chronic Lower Resp. Disease (4.5%)	Diabetes (4.5%)	Diabetes (5.4%)	Diabetes (5.4%)	Chronic Liver Disease & Cirrhosis (5.6%)	Diabetes (5.0%)	Diabetes (3.8%)	Diabetes (5.4%)	Diabetes (4.9%)
7	Alzheimer's Disease (2.7%)	Suicide (3.3%)	Suicide (3.3%)	Suicide (3.7%)	Suicide (3.3%)	Suicide (3.3%)	Suicide (3.5%)	Suicide (3.7%)	Suicide (3.1%)	Suicide (3.8%)
8	Suicide (2.2%)	Influenza & Pneumonia (2.3%)	Alzheimer's Disease (1.9%)	Alzheimer's Disease (1.8%)	Alzheimer's Disease (1.7%)	Alzheimer's Disease (2.1%)	Alzheimer's Disease (1.7%)	Alzheimer's Disease (2.4%)	Alzheimer's Disease (2.1%)	Alzheimer's Disease (2.0%)
9	Other Respiratory Disease (1.8%)	Other Respiratory Disease (1.6%)	Homicide (1.9%)	Influenza & Pneumonia (1.7%)	Influenza & Pneumonia (1.5%)	Other Respiratory Disease (1.6%)	Other Respiratory Disease (1.4%)	Influenza & Pneumonia (1.7%)	Other Respiratory Disease (1.3%)	Influenza & Pneumonia (1.3%)
10	Septicemia (1.4%)	Alzheimer's Disease (1.4%)	Influenza & Pneumonia (1.7%)	Other Respiratory Disease (1.4%)	Other Respiratory Disease (1.5%)	Viral Hepatitis (1.4%)	Influenza & Pneumonia (1.2%)	Nephritis (1.5%)	Influenza & Pneumonia (1.2%)	Other Respiratory Disease (1.0%)

**All-cause Mortality Rate, 2014-2016**  
**Northwest Region (Idaho, Oregon, Washington)**  
**AI/AN vs. Non-AI/AN**



AI/AN = American Indian/Alaska Native  
Non-AI/AN = Not American Indian/Alaska Native

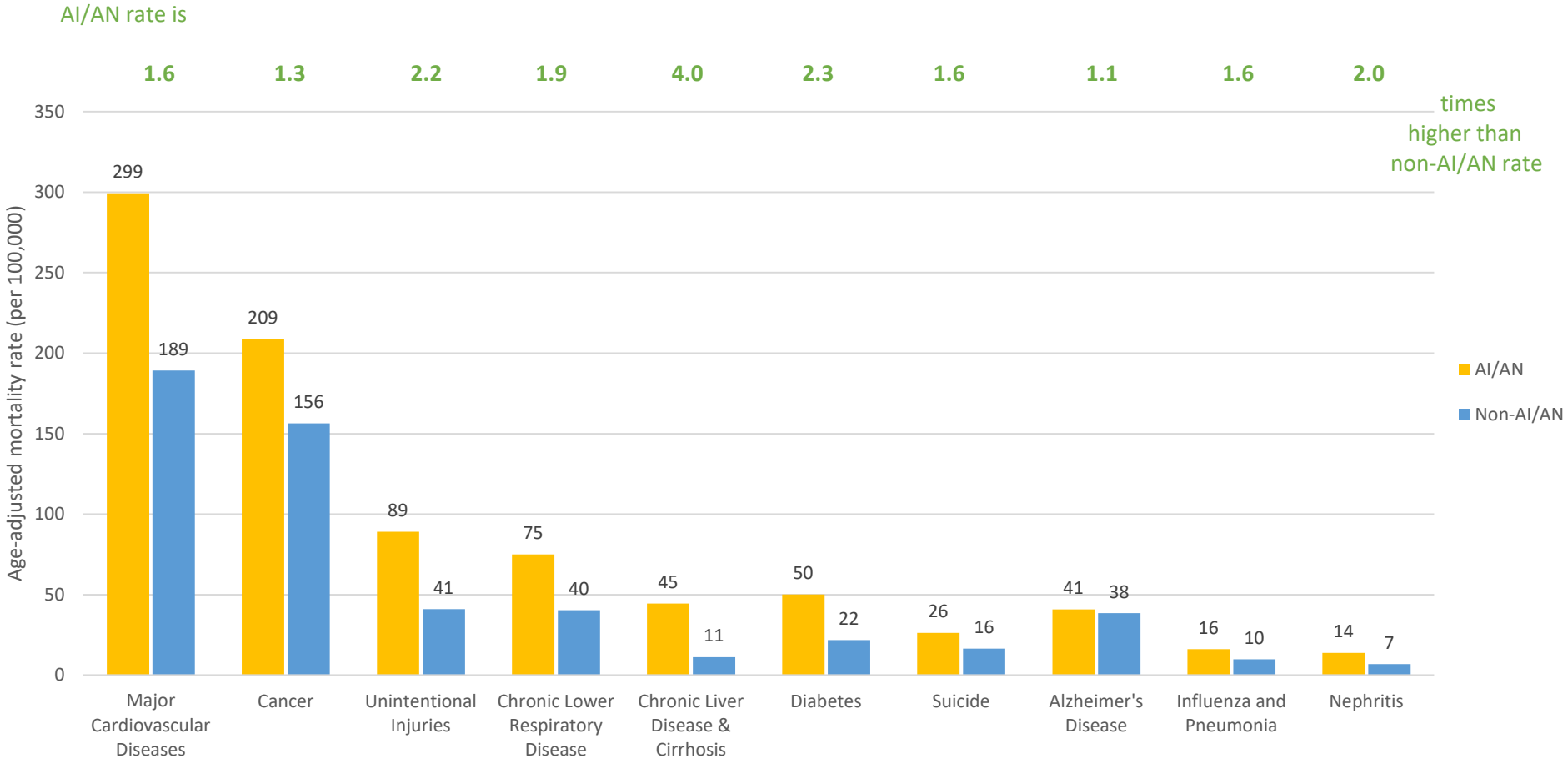
## Age-specific All-cause Mortality Rates, 2014-2016 Northwest Region (Idaho, Oregon, Washington) AI/AN vs. Non-AI/AN



AI/AN = American Indian/Alaska Native

Non-AI/AN = Not American Indian/Alaska Native

**Age-adjusted Mortality Rates for Leading Causes of Death, 2014-2016**  
**Northwest Region (Idaho, Oregon, Washington)**  
**AI/AN vs. Non-AI/AN**



AI/AN = American Indian/Alaska Native  
 Non-AI/AN = Not American Indian/Alaska Native



**Causes of Death with the Largest Disparities in Rates, 2014-2016**  
**Northwest Region (Idaho, Oregon, and Washington)**  
**AI/AN vs. Non-AI/AN**

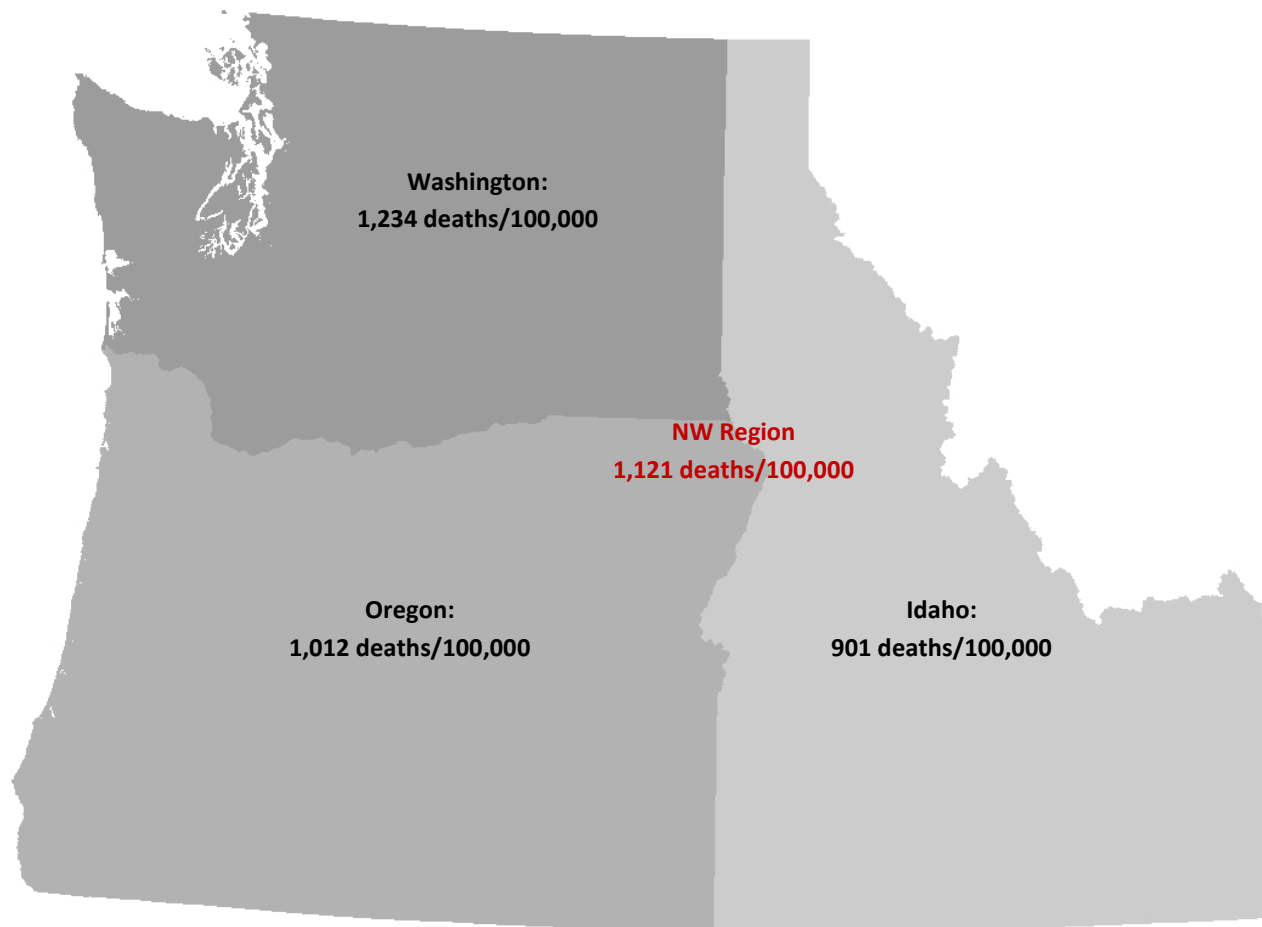
<b>Rank</b>	<b>Cause of Death</b>	<b>AI/AN Rate (Count)</b>	<b>Non-AI/AN Rate (Count)</b>	<b>AI/AN vs Non-AI/AN Rate Ratio</b>
<b>1</b>	Legal Intervention	1.52 (11)	0.26 (97)	5.8
<b>2</b>	Kidney Infections	1.43 (7)	0.35 (151)	4.1
<b>3</b>	Chronic Liver Disease & Cirrhosis	44.53 (317)	11.20 (4,930)	4.0
<b>4</b>	Viral Hepatitis	7.69 (58)	2.69 (1,322)	2.9
<b>5</b>	HIV	2.06 (15)	0.73 (308)	2.8
<b>6</b>	Complications of Medical Care	2.36 (12)	0.90 (383)	2.7
<b>7</b>	Nutritional Deficiencies	3.61 (12)	1.46 (634)	2.5
<b>8</b>	Diabetes	50.10 (270)	21.84 (9,479)	2.3
<b>9</b>	Homicide	6.39 (52)	2.82 (1,047)	2.3
<b>10</b>	Hernias	1.86 (8)	0.83 (356)	2.2

Rates are age-adjusted and per 100,000

AI/AN = American Indian/Alaska Native

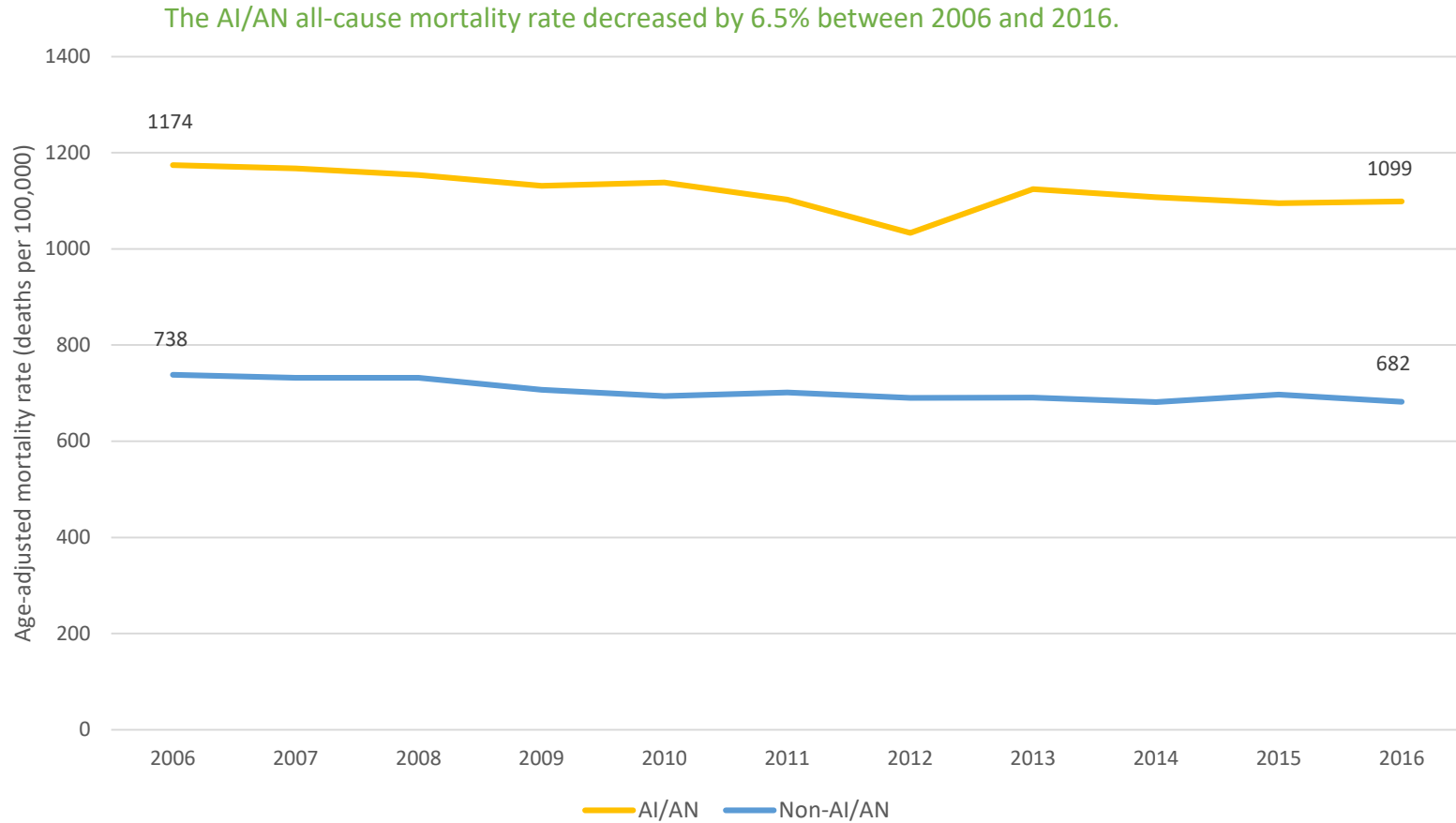
Non-AI/AN = Not American Indian/Alaska Native

**All-cause Mortality Rate by State, 2014-2016  
Northwest Region (Idaho, Oregon, Washington)  
American Indians/Alaska Natives**



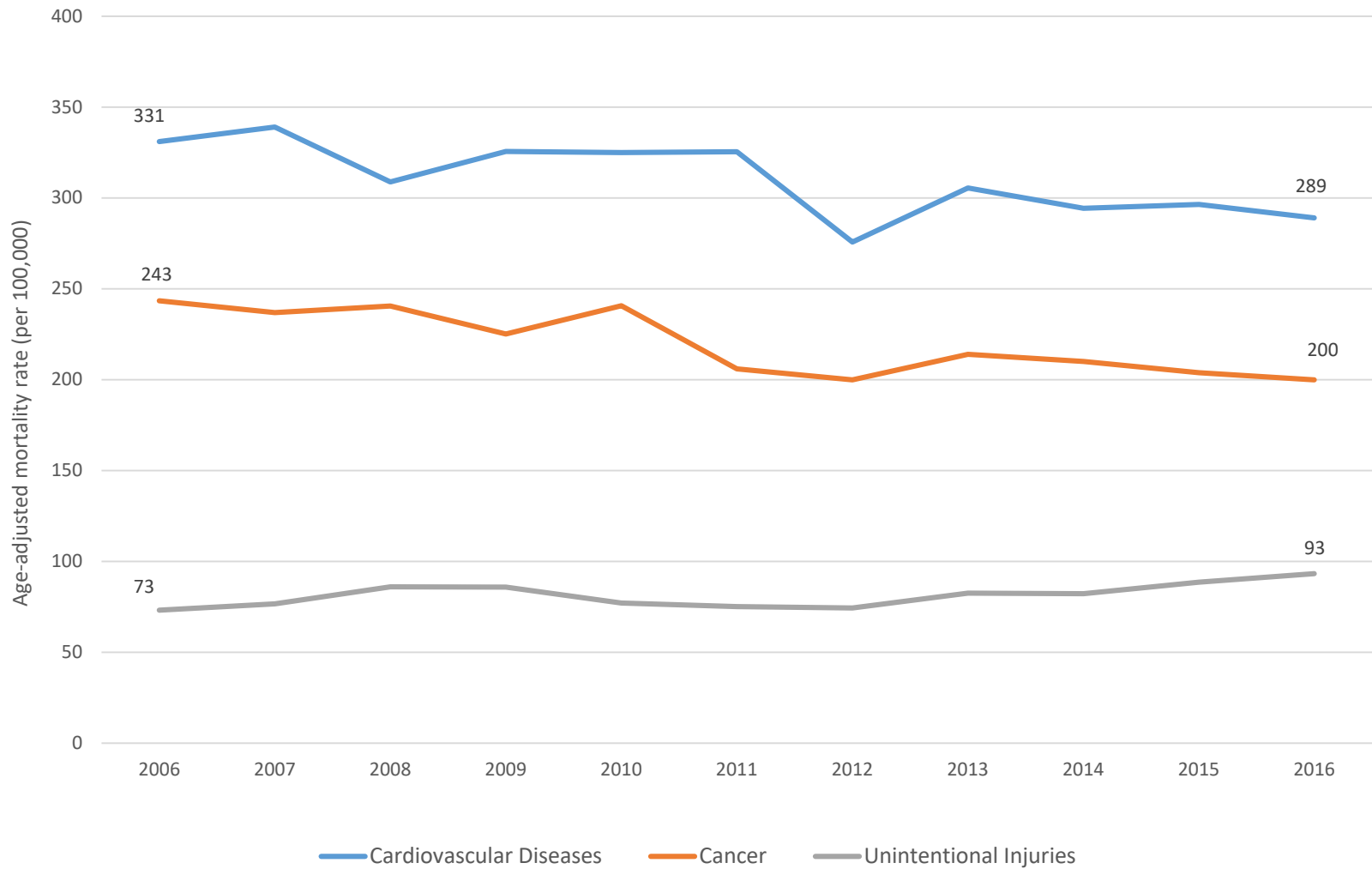
Rates are age-adjusted and per 100,000

# Trends in All-Cause Mortality Rates, 2006-2016 Northwest Region (Idaho, Oregon, Washington) AI/AN vs. Non-AI/AN

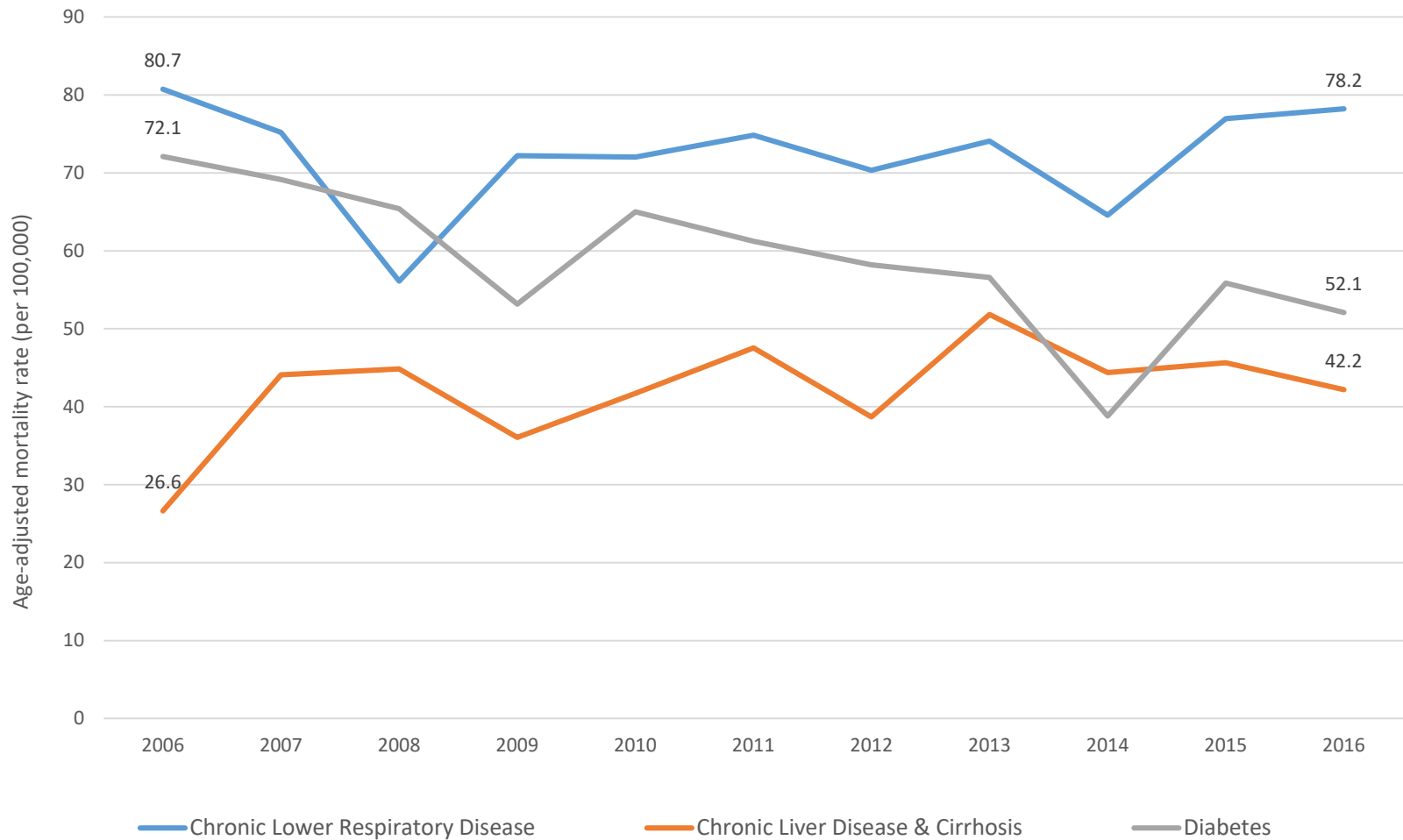


AI/AN = American Indian/Alaska Native  
Non-AI/AN = Not American Indian/Alaska Native

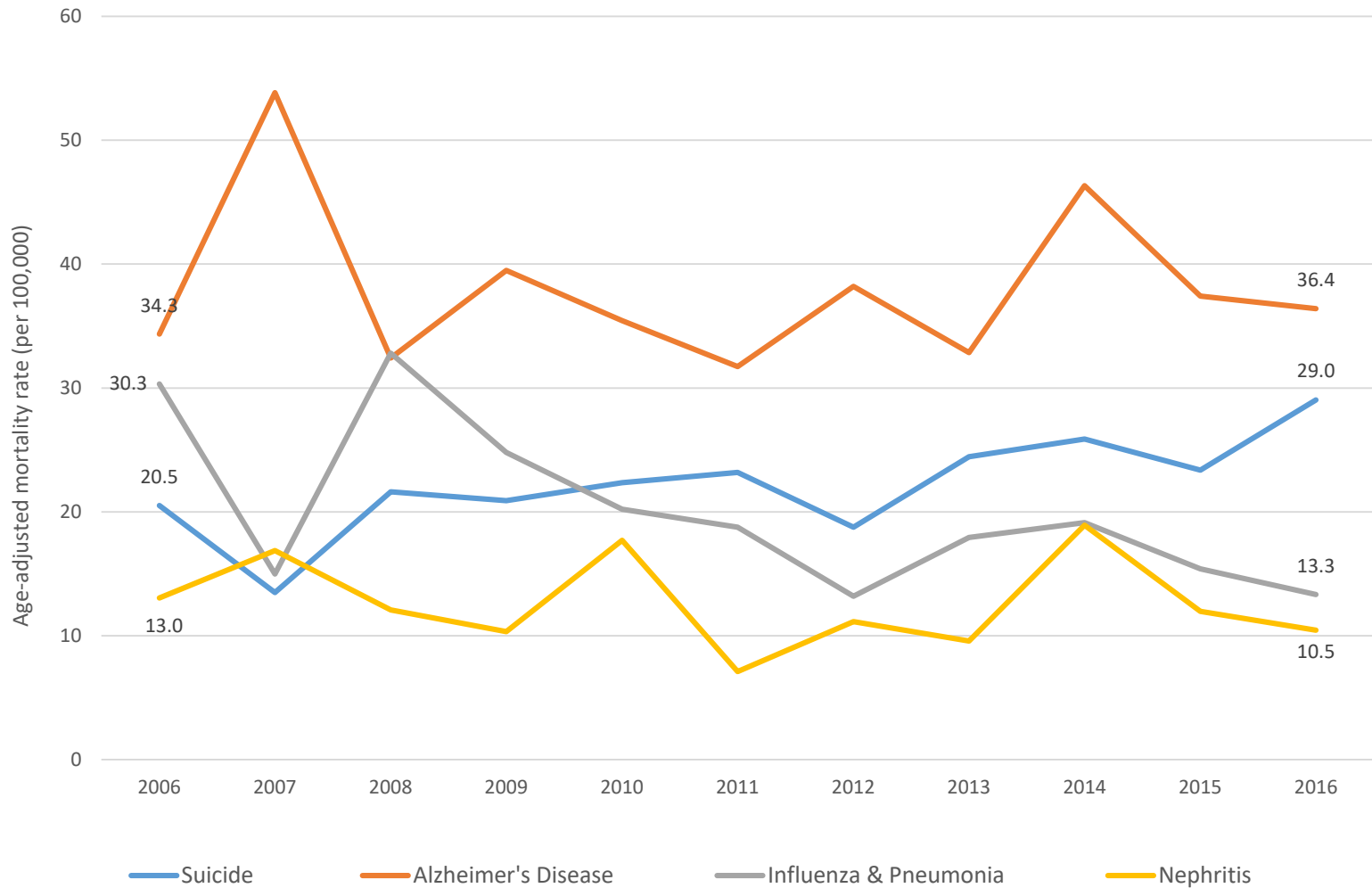
**Trends in Mortality Rates for Cardiovascular Diseases, Cancer, and Unintentional Injuries, 2006-2016**  
**Northwest Region (Idaho, Oregon, Washington)**  
**American Indians/Alaska Natives**



**Trends in Mortality Rates for Chronic Lower Respiratory Disease, Chronic Liver Disease & Cirrhosis, and Diabetes,  
2006-2016**  
**Northwest Region (Idaho, Oregon, Washington)**  
**American Indians/Alaska Natives**



**Trends in Mortality Rates for Suicide, Alzheimer's Disease, Influenza & Pneumonia, and Nephritis, 2006-2016**  
**Northwest Region (Idaho, Oregon, Washington)**  
**American Indians/Alaska Natives**



## About The Data

- Data sources: Death certificates from the Washington Center for Health Statistics, Oregon Center for Health Statistics, and Idaho Bureau of Vital Records and Statistics
- State death certificates were corrected for AI/AN misclassification through linkage with the Northwest Tribal Registry by NPaiHB's Improving Data & Enhancing Access – Northwest (IDEA-NW) Project. This correction resulted in the identification of **552 additional AI/AN deaths** during 2014-2016, and resulted in an **11% increase** in the all-cause mortality rate for this time period.
- The data presented include deaths to residents in Idaho (including out of state deaths to residents), Oregon (in-state deaths to residents only), and Washington (including out of state deaths to residents).
- American Indian/Alaska Native (AI/AN) data include American Indians or Alaska Natives alone or in combination with another race. Non-AI/AN data include all non-AI/AN residents in Idaho, Oregon, and Washington.
- Rates (except the age-specific rates presented on page 6) are age-adjusted to the 2000 US Standard population and use the National Center for Health Statistics (NCHS) bridged race estimates as population denominators.
- Leading causes of death were coded using ICD-10 codes according to the NCHS 113 Selected Causes of Death list ([https://www.cdc.gov/nchs/data/dvs/im9\\_2002.pdf.pdf](https://www.cdc.gov/nchs/data/dvs/im9_2002.pdf.pdf))

---

Please visit the IDEA-NW website for additional data reports

<http://www.npaihb.org/idea-nw/>

or contact us at [ideanw@npaihb.org](mailto:ideanw@npaihb.org) for data requests

---