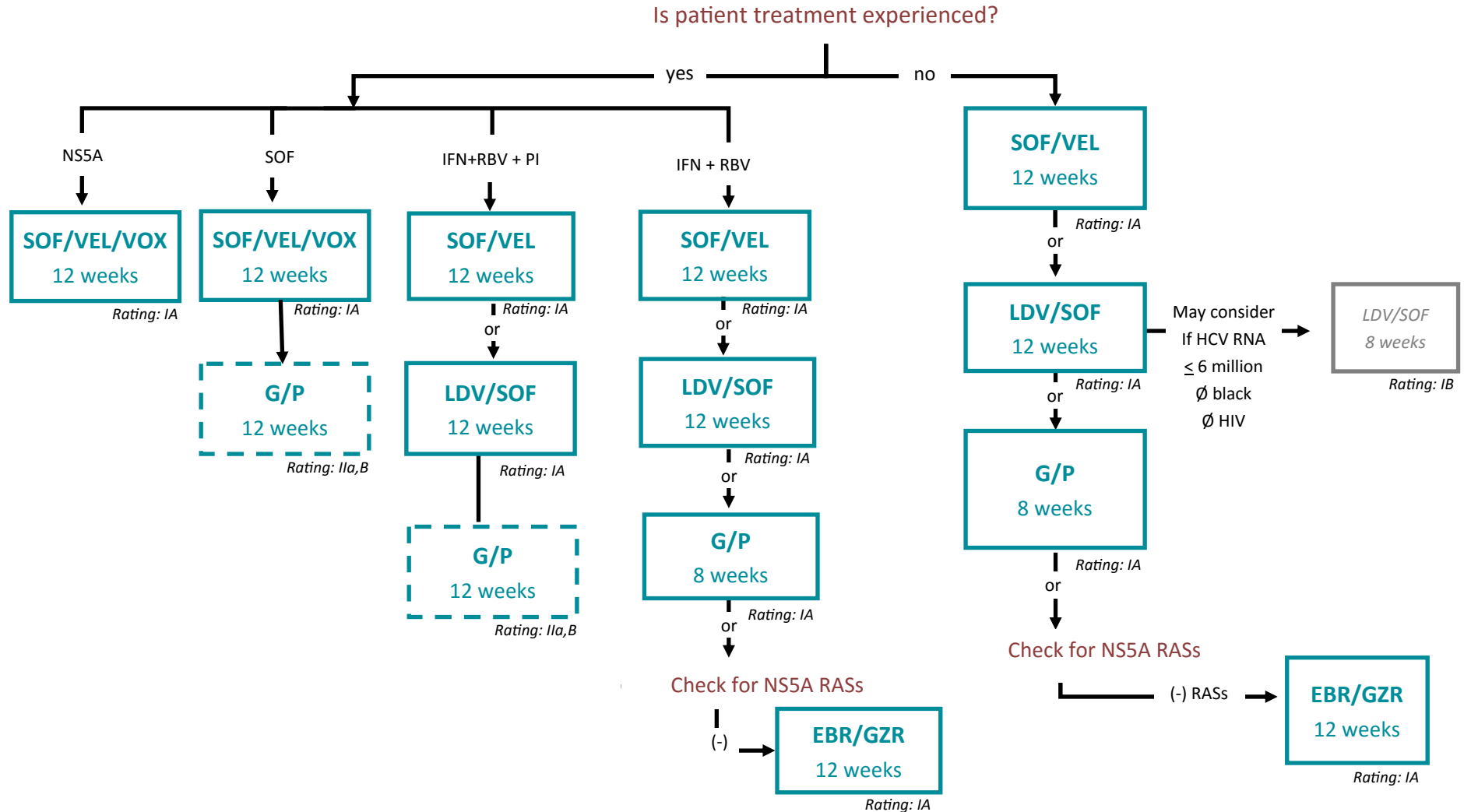


Hepatitis C : Genotype 1a Non-Cirrhotic Treatment Regimen



Direct Acting Antivirals (DAAs):

EBR/GZR: elbasvir/grazoprevir (Zepatier)

G/P: glecaprevir/pibrentasvir (Mavyret)

LDV/SOF: ledipasvir/sofosbuvir (Harvoni)

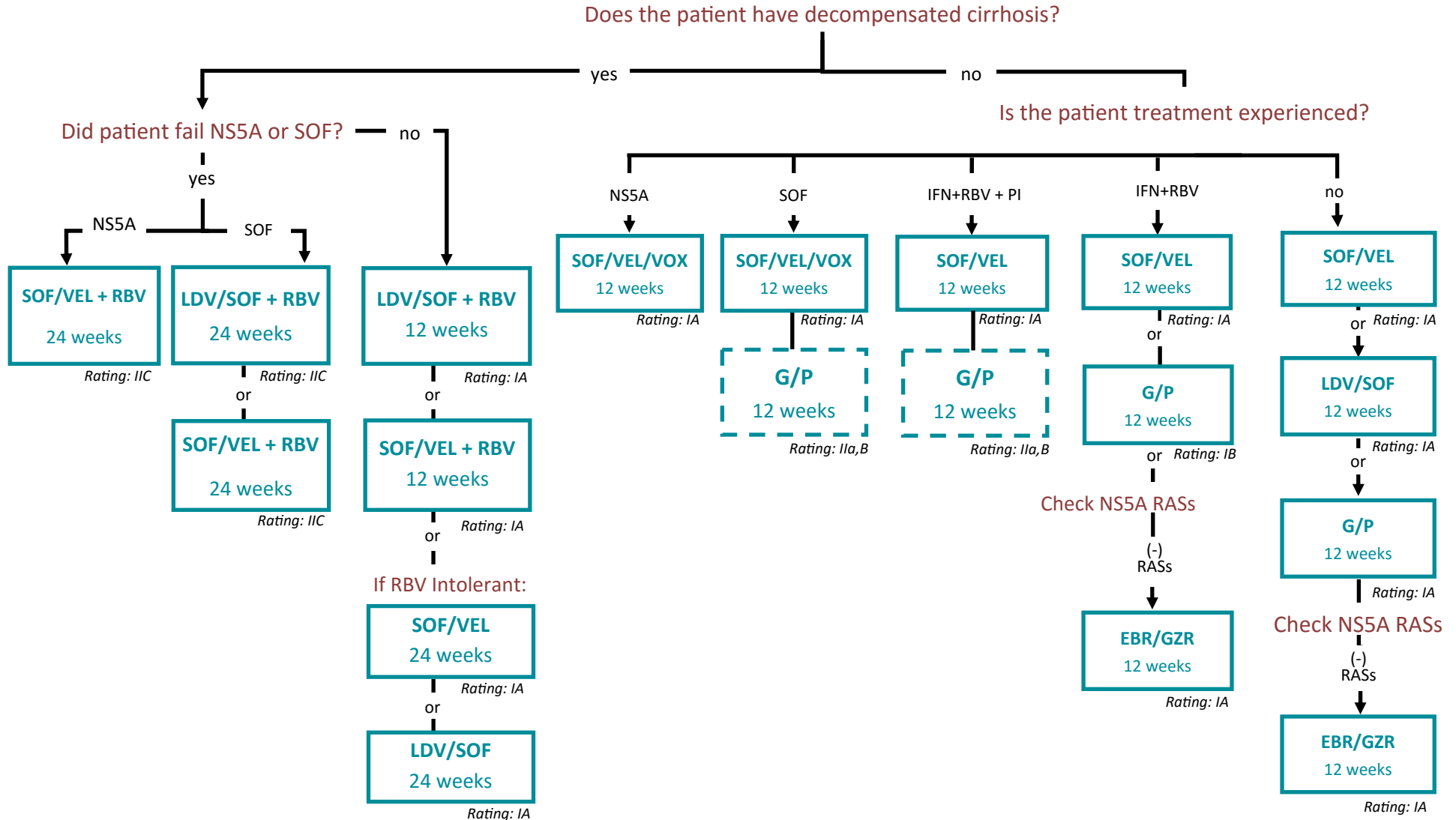
SOF/VEL: sofosbuvir/velpatasvir (Epclusa)

SOF/VEL/VOX: sofosbuvir/velpatasvir/voxilaprevir (Vosevi)

**Rating for Level of Recommendation*

These are recommended in the AASLD/IDSA guidelines but have less evidence to support their use and are not ECHO preferred regimens

Hepatitis C : Genotype 1a Cirrhotic Treatment Regimen



*Rating for Level of Recommendation

These are recommended in the AASLD/IDSA guidelines but have less evidence to support their use and are not ECHO preferred regimens

Direct Acting Antivirals (DAAs):

EBR/GZR: elbasvir/grazoprevir (Zepatier)

G/P: glecaprevir/pibrentasvir (Mavyret)

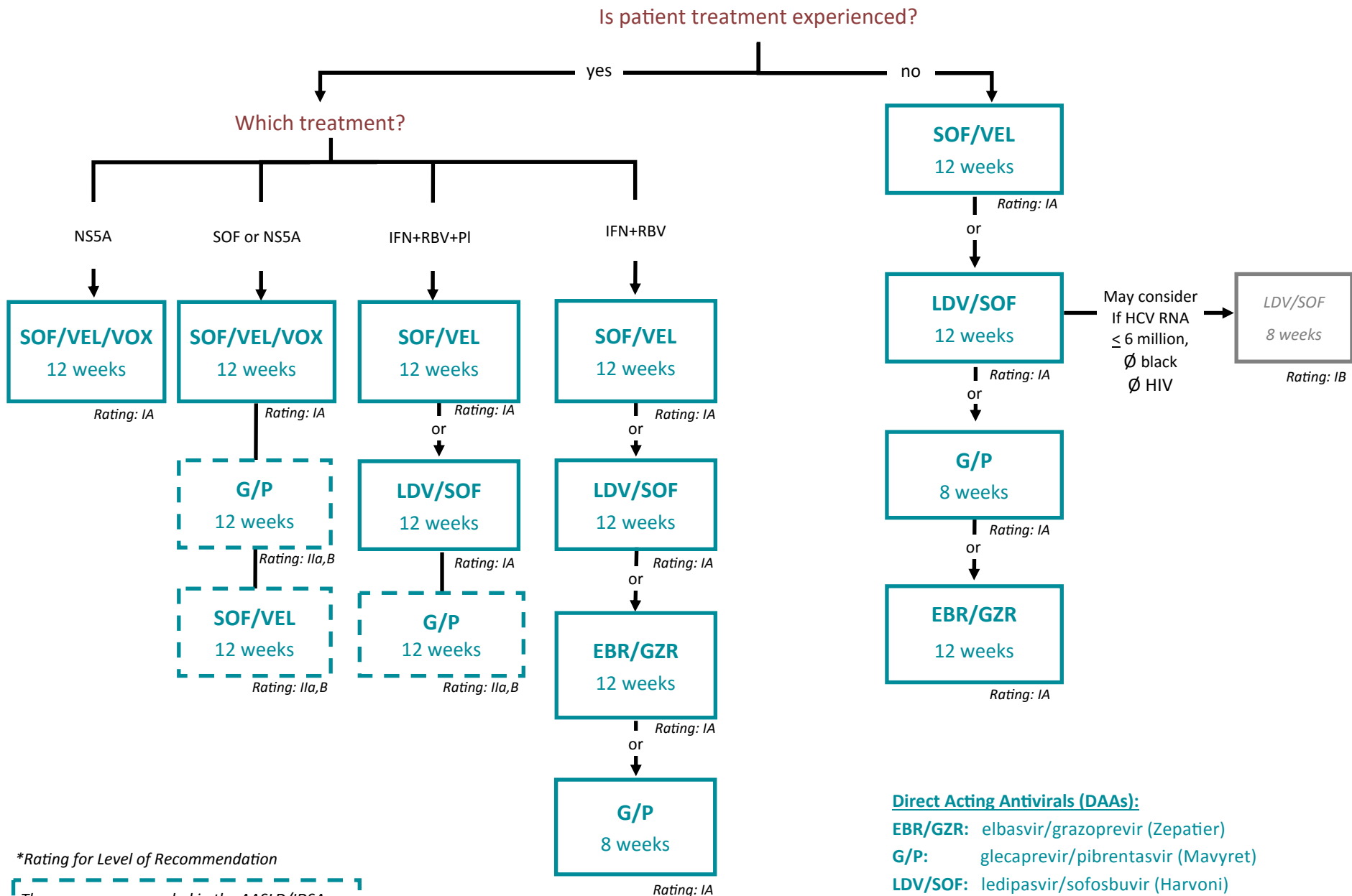
LDV/SOF: ledipasvir/sofosbuvir (Harvoni)

SOF/VEL: sofosbuvir/velpatasvir (Epclusa)

SOF/VEL/VOX: sofosbuvir/velpatasvir/voxilaprevir (Vosevi)



Hepatitis C : Genotype 1b Non-Cirrhotic Treatment Regimen



*Rating for Level of Recommendation

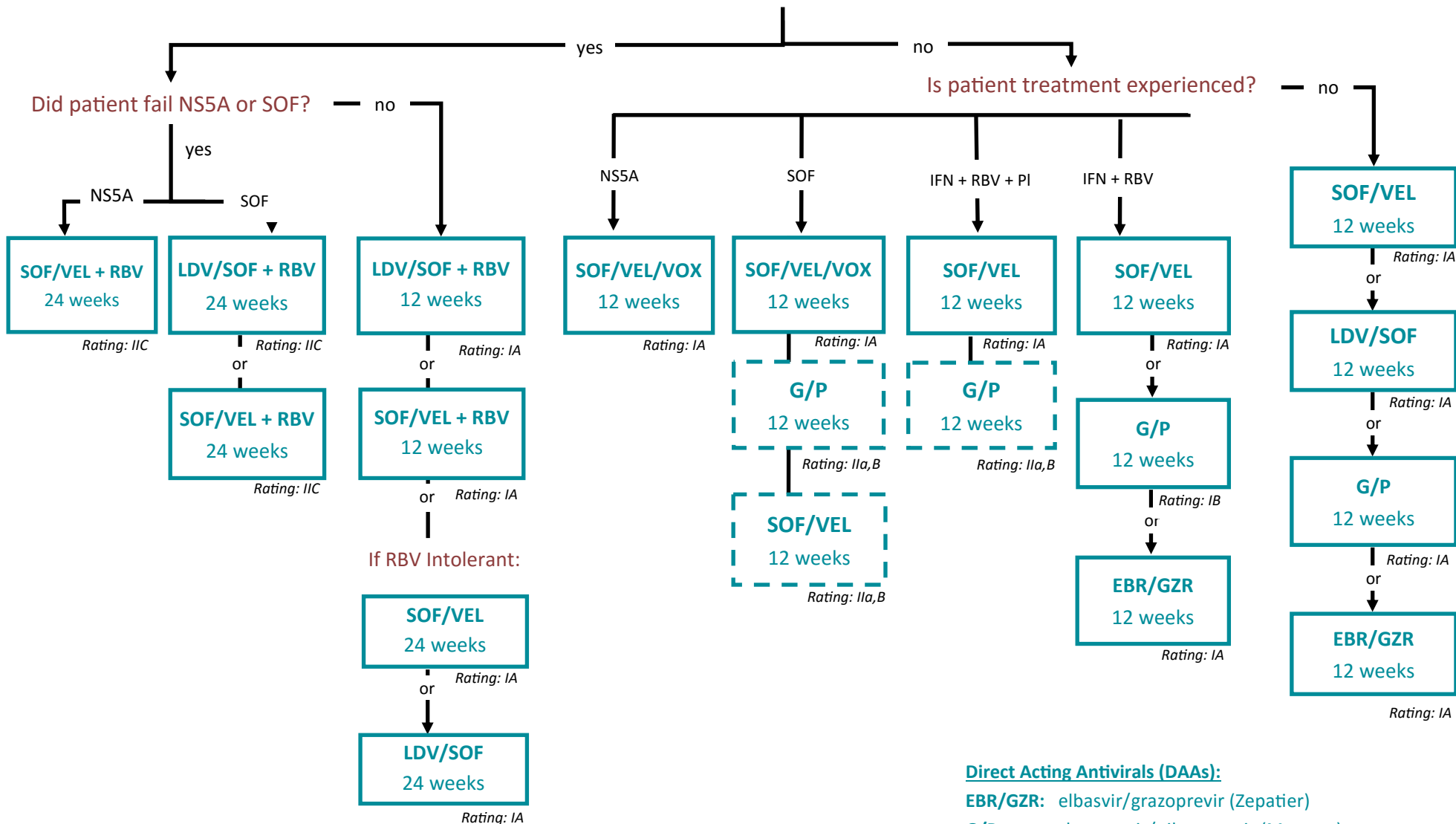
These are recommended in the AASLD/IDSA guidelines but have less evidence to support their use and are not ECHO preferred regimens

Direct Acting Antivirals (DAAs):

- EBR/GZR:** elbasvir/grazoprevir (Zepatier)
- G/P:** glecaprevir/pibrentasvir (Mavyret)
- LDV/SOF:** ledipasvir/sofosbuvir (Harvoni)
- SOF/VEL:** sofosbuvir/velpatasvir (Epclusa)
- SOF/VEL/VOX:** sofosbuvir/velpatasvir/voxilaprevir (Vosevi)

Hepatitis C : Genotype 1b Cirrhotic Treatment Regimen

Does the patient have decompensated cirrhosis?



*Rating for Level of Recommendation

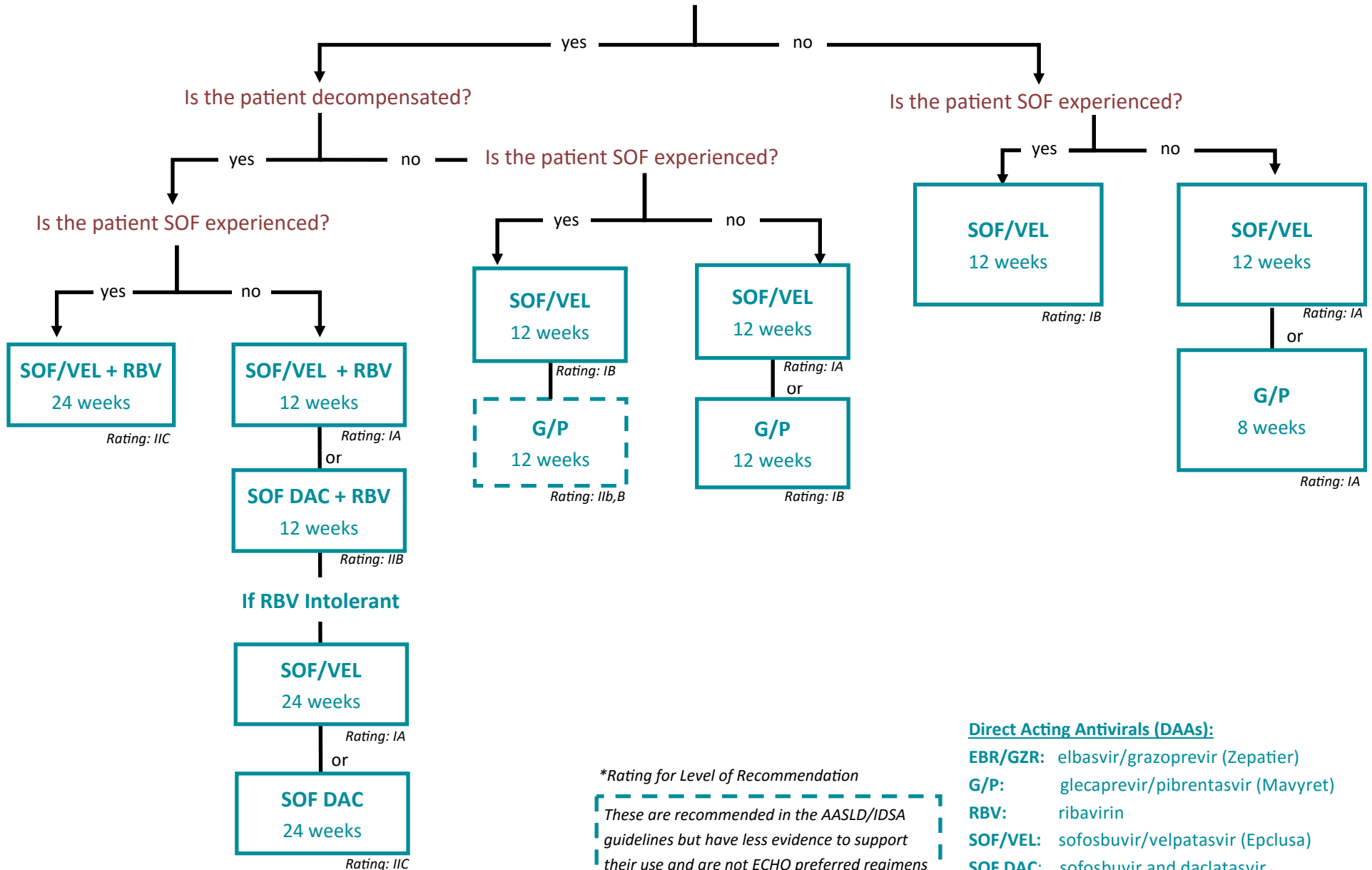
These are recommended in the AASLD/IDSA guidelines but have less evidence to support their use and are not ECHO preferred regimens

Direct Acting Antivirals (DAAs):

- EBR/GZR:** elbasvir/grazoprevir (Zepatier)
- G/P:** glecaprevir/pibrentasvir (Mavyret)
- LDV/SOF:** ledipasvir/sofosbuvir (Harvoni)
- RBV:** ribavirin
- SOF/VEL:** sofosbuvir/velpatasvir (Epclusa)
- SOF/VEL/VOX:** sofosbuvir/velpatasvir/voxilaprevir (Vosevi)

Genotype 2 Patients

Does the patient have cirrhosis?



**Rating for Level of Recommendation*

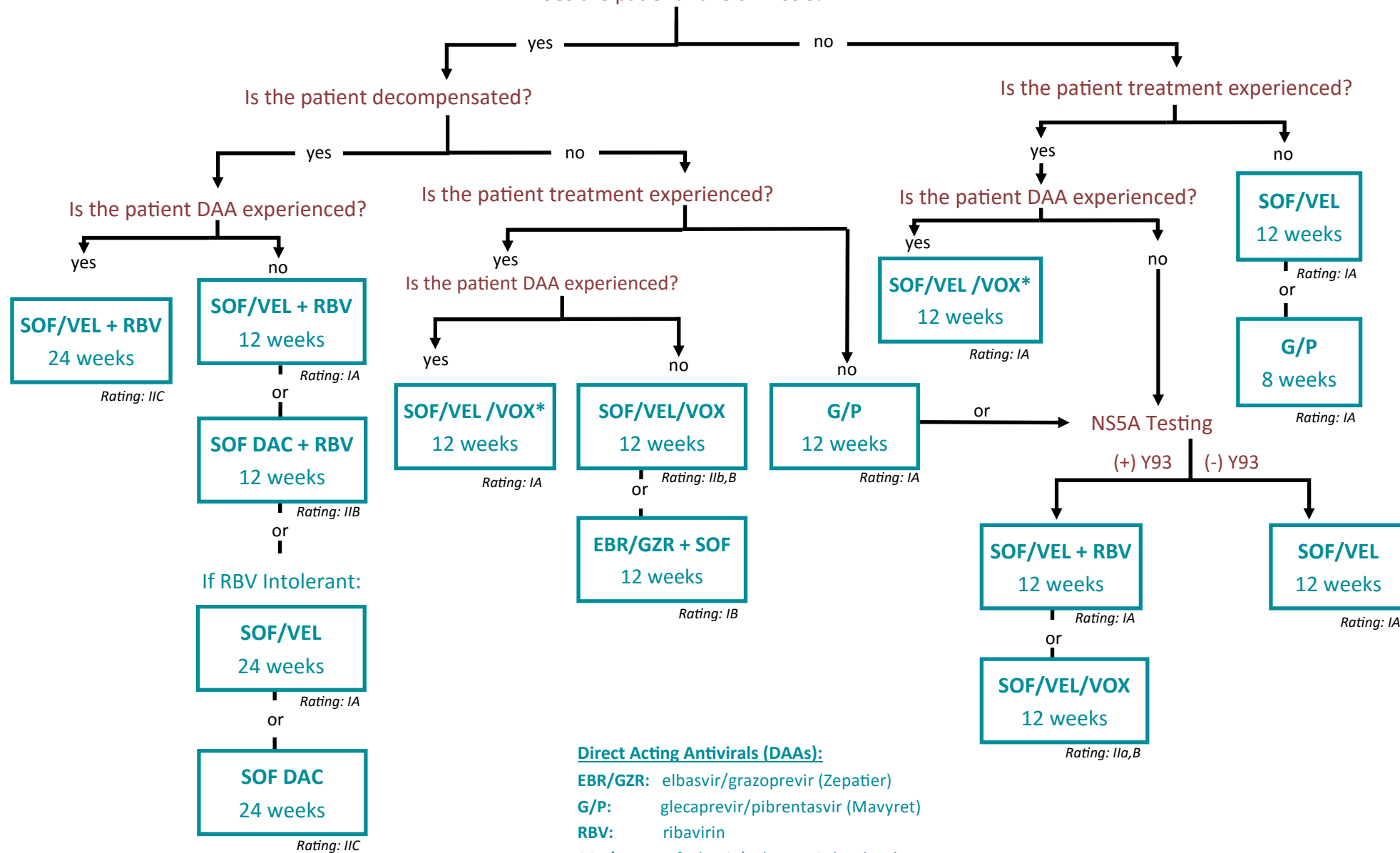
These are recommended in the AASLD/IDSA guidelines but have less evidence to support their use and are not ECHO preferred regimens

Direct Acting Antivirals (DAAs):

- EBR/GZR:** elbasvir/grazoprevir (Zepatier)
- G/P:** glecaprevir/pibrentasvir (Mavyret)
- RBV:** ribavirin
- SOF/VEL:** sofosbuvir/velpatasvir (Epclusa)
- SOF DAC:** sofosbuvir and daclatasvir

Genotype 3 Patients

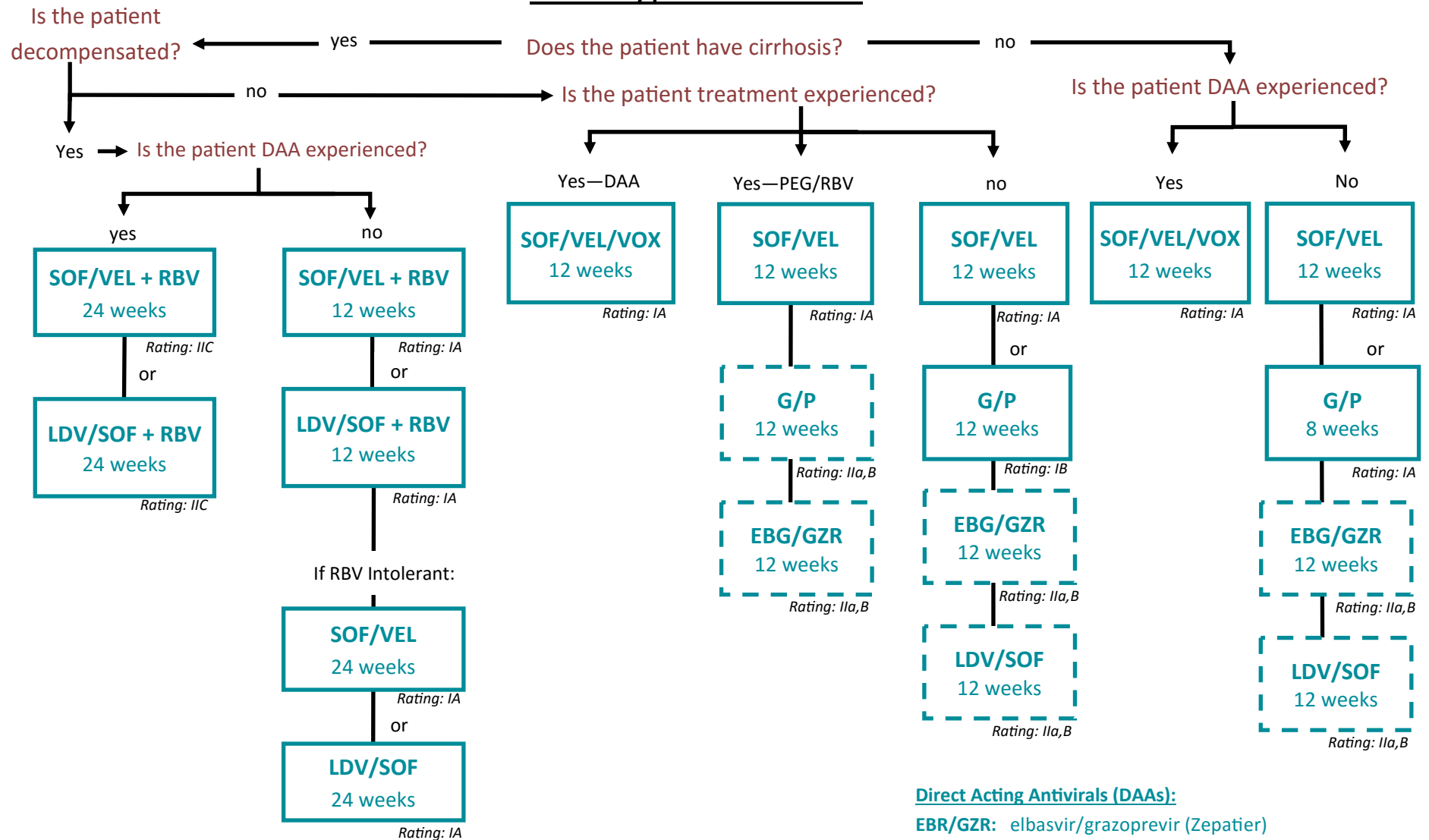
Does the patient have cirrhosis?



*Rating for Level of Recommendation

*IF NS5A-experienced, add weight based RBV

Genotype 4 Patients



Direct Acting Antivirals (DAAs):

EBR/GZR: elbasvir/grazoprevir (Zepatier)

G/P: glecaprevir/pibrentasvir (Mavyret)

LDV/SOF: ledipasvir/sofosbuvir (Harvoni)

RBV: ribavirin

SOF/VEL: sofosbuvir/velpatasvir (Epclusa)

SOF/VEL/VOX: sofosbuvir/velpatasvir/voxilaprevir (Vosevi)

*Rating for Level of Recommendation

These are recommended in the AASLD/IDSA guidelines but have less evidence to support their use and are not ECHO preferred regimens