



California and Northwest Tribal Epidemiology Center Overview

Vanessia Cresci, MSW, MBA
Acting Epidemiology Manager, California Tribal Epidemiology Center
Director, Research & Public Health Department
California Rural Indian Health Board, Inc.

Victoria Warren-Mears, PhD, RDN, FAND
Director, Northwest Tribal Epidemiology Center
Northwest Portland Area Indian Health Board



Tribal Epidemiology Centers (TEC)

- Established via Indian Health Care improvement Act (IHCA)
- Four TECs were started in 1996, now 12 TECs
- TECs function independently, but also as part of a national group called TEC-Consortium





TECs as Public Health Authorities

- Established through permanent reauthorization of the Indian Health Care Improvement Act (IHCIA) as part of the Patient Protection and Affordable Care Act (2010)

The Secretary "shall grant to each epidemiology center... access to use of the data, data sets, monitoring systems, delivery systems, and other protected health information in the possession of the Secretary."

25 U.S.C.A. § 1621m(c)

- Health and Human Services (HHS) directive gives TECs access to HHS data systems and protected health information
- Centers for Disease Control and Prevention must provide TECs technical assistance
- Each Indian Health Service (IHS) Area must have TEC access



California Tribal Epidemiology Center

- Formed in 2005
- Housed within the California Rural Indian Health Board's Research and Public Health Department
- Guided by an Advisory Council, but reports to CRIHB Board of Directors
- Staff by 6 Epidemiologists, 4 Program Evaluators, 2 Project Coordinators, 1 Research Associate, and 1 Outreach Coordinator

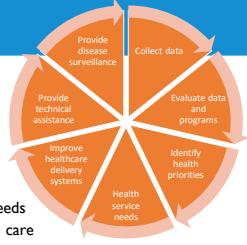


Northwest Tribal Epidemiology Center

- Formed in 1996
 - Tribal leaders had approved the concept and function of a tribal research and epidemiology center prior to this time.
- Housed within the Northwest Portland Area Indian Health Board
- Guided by the Public Health Committee of the NPAIHB, and report to the NPAIHB Board
- Functions as a departmental designation with oversight of over 30 employees



7 Core Functions



- Collect data
- Evaluate data and programs
- Identify health priorities with Tribes
- Make recommendations for health service needs
- Make recommendations for improving health care delivery systems
- Provide epidemiologic technical assistance to Tribes and Tribal organizations
- Provide disease surveillance to Tribes



Mutual Areas of Focus

Project Focus	California TEC	Northwest TEC
Technical Assistance	★	★
Workforce Development	★	★
Trainings	★	★
Data Access and Analysis	★	★
Grant Writing Training/Support	★	★
Publications		★
Partnerships	★	★
Community Health Assessments	★	★
Communities of Practice		★
Data Management Systems		★
Subawardee Projects	★	★
Public Health Priority Settings	★	★



I. Collect Data

- Tribal Behavioral Risk Factor Survey (adult and youth)
- Community Health Assessments
- California Health Interview Survey: AIAN oversample
- Health Priorities Survey
- Oral Health Needs Assessment
- California Tribal Opioid Strategic Plan





Collect Data

- NWTEC does data linkage work with the Northwest Tribal Registry to correct misclassification of individuals in State and Regional data systems, who are not correctly identified as AI/AN.
- NWTEC collects original data from surveys and projects
- NWTEC collects both numeric and story based data



2. Evaluate Data and Programs

- Good Health and Wellness in Indian Country
- MSPI/DVPI Technical Assistance Provider
- California Tribal Comprehensive Cancer Control Program
- Tribal Personal Responsibility and Education Program
- Native Connections
- Building Public Health Infrastructure in Indian Community
- Tribal Public Health Capacity Building
- Project Pathway
- Tribal Opioid Response
- Dental Transformation Initiative
- Provide specialized evaluation to Tribal projects upon request





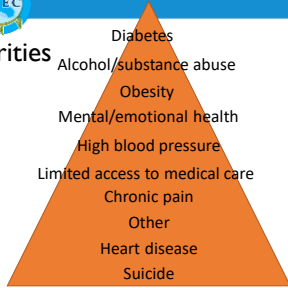
Evaluate Data and Programs

- NWTEC evaluates behavioral health programs in our region
- NWTEC evaluates Good Health and Wellness activities
- Conduct internal evaluation on all of our programs
- Provide specialized evaluation to tribal projects upon request



3. Identify Health Priorities

- Health Priorities Survey: Statewide to community, 2017
- Annual Health Priorities Survey: THP/UIHP Directors
- Multi-site THP priorities reports





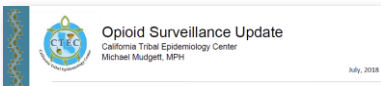
Identify Health Priorities with Tribes

- NWTEC conducts an annual health priorities survey with regional tribal leadership and health directors
- NWTEC staff scan the environment for emerging public health topics.
- NWTEC collaborates with the Portland Area Office of Indian Health Service to identify priority health concerns.



4. Make Recommendations for Health Service Needs

- Provide feedback and data for Tribal consultations
- Serve as a resource for federal agency Tribal Advisory Committees' California delegates
- Develop and publish data reports





Make Recommendations for Health Service Needs

- NWTEC publishes data to inform the decision making processes around health service needs.
- NWTEC provides data to support regional consultation and budget development for HHS programs.
- Provide technical assistance for advocacy.



5. Improving Healthcare Delivery Systems

- Collaborate with Medical Director/Medical Epidemiologist and Public Health Nurse on projects
- Summer Research Assistant Program
- Annual Data, Evaluation, and Grant Writing training
- Tribal Adverse Childhood Experiences pilot project



Improving Health Care Delivery Systems

- NWTEC staff has created communities of practice for Hepatitis C, Opioid treatment and Diabetes.
 - More communities of practice are on the horizon to assist communities with treatment of complex disease cases.
 - Have provided opportunities for other health boards to develop these services.
- Conduct data analysis for SDPI programs within our area
- Conduct various trainings regionally and nationally to improve care



6. Provide Technical Assistance

- Access to data
- Data collection
- Data interpretation and dissemination
- Program evaluation
- Survey development
- Evaluation plan development
- Focus groups
- Key Informant Interviews
- Community health assessments
- Community Readiness Model
- Outbreak response
- Surveillance
- Data management and use





Provide Epidemiologic TA

- NWTEC offers training in a variety of topics, including health data literacy to assist tribes in understanding and using data.
- Provide access to linkage corrected data to both States and Tribes.
- Provide technical assistance across all of our program areas for health promotion and disease prevention.
- Staff include a Centers for Disease Control and Prevention Epidemic Intelligence Service Officer (EISO) and Public Health Associate Program Staff.
- House the Portland Area Office IHS medical epidemiologist to ensure close collaboration to benefit Area tribes.



7. Provide Disease Surveillance and Promotion of Public Health

- Development of a Disease Outbreak Response Protocol
- Development of a Disease Surveillance Protocol
- Monitor infectious diseases
 - Disseminated information regarding Zika and Measles outbreak
- Emergency Preparedness staff capacity development



7. Provide Disease Surveillance and Promotion of Public Health: Opioid Surveillance

- Implement a Tribal Opioid Surveillance Assessment
 - Assess Tribal-specific capacity and gaps
- Partner with Tribes and Stakeholders to improve opioid surveillance
 - Partner with California Department of Public Health to improve AIAN reporting via California Opioid Surveillance Dashboard
- Address and improve data issues related to racial classification across data systems
 - Partner with 2 Tribal Health Programs to link AIAN data with death vital statistics to assess racial misclassification
- Improve non-fatal overdose data collection
 - Work with 2 Tribal Health Programs and hospitals to assess data issues and improve data sharing
 - Partner with a Tribe to pilot ODMAP use
- Improve fatal overdose data collection
 - Develop partnerships with medical examiners, coroners, funeral directors



Provide Disease Surveillance and Promotion of Public Health

- NWTEC has provided a Public Health Emergency Preparedness conference, annually over the last 13 years to enhance jurisdictional collaboration during an emergency.
- NWTEC provides assistance with tasks related to Public Health Accreditation preparation.
 - Assists with MOU development for medical countermeasures and disease investigation
- Staff assisted States of Washington and Oregon with recent measles outbreak

Questions

Vanesscia Cresci, MSW, MPA
 Acting Epidemiology Manager, California Tribal Epidemiology Center
 Director, Research & Public Health Department
 California Rural Indian Health Board, Inc.
vcresci@crihb.org
 (916) 929-9761 x1500
<http://www.crihb.org/ctec>





Questions

Victoria Warren-Mears, PhD, RDN, FAND
Director, Northwest Tribal Epidemiology Center
Northwest Portland Area Indian Health Board
vwarrenmears@npaihb.org
(503)416-3283 or (503)998-6063
<http://www.npaihb.org/epicenter/>