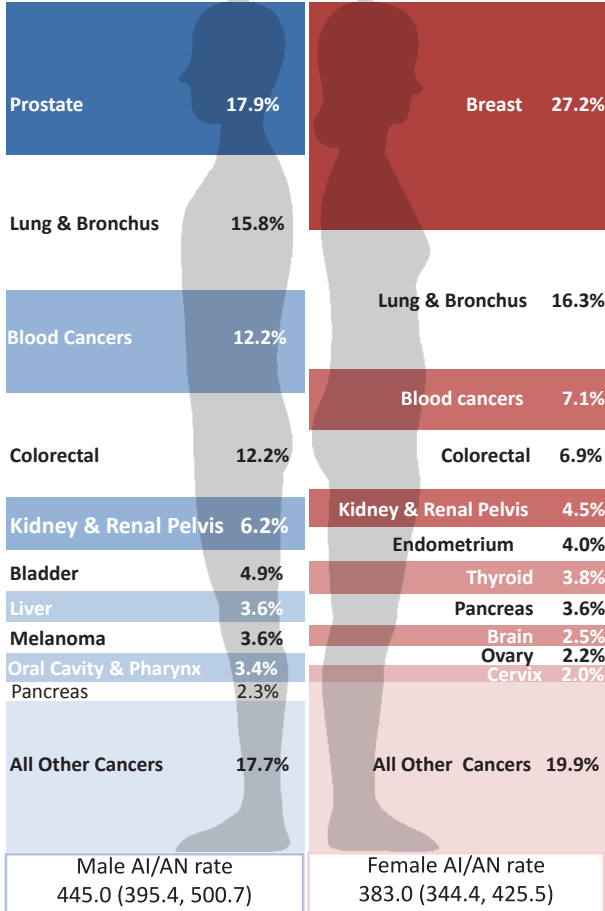


Cancer among American Indians and Alaska Natives in Oregon, 2003-2007

Northwest Portland Area Indian Health Board
Indian Leadership for Indian Health



Leading cancer sites by sex



Leading cancer sites by age group and sex (percent of cases)

Rank	20-39		40-64		65+	
	Male	Female	Male	Female	Male	Female
1	Blood cancers (42.1%)	Thyroid (22.2%)	Lung & bronchus (13.8%)	Breast (35.5%)	Prostate (23.7%)	Lung & bronchus (24.7%)
2	Brain (15.8%)	Breast (16.7%)	Prostate (12.4%)	Lung & bronchus (12.3%)	Lung & bronchus (19.1%)	Breast (20.4%)
3	Testis (10.5%)	Melanoma of the skin (13.9%)	Blood cancers (11.0%)	Colorectal (8.2%)	Colorectal (15.8%)	Blood cancers; Colorectal (7.0% ea.)

Note: younger age groups had too few cases to report

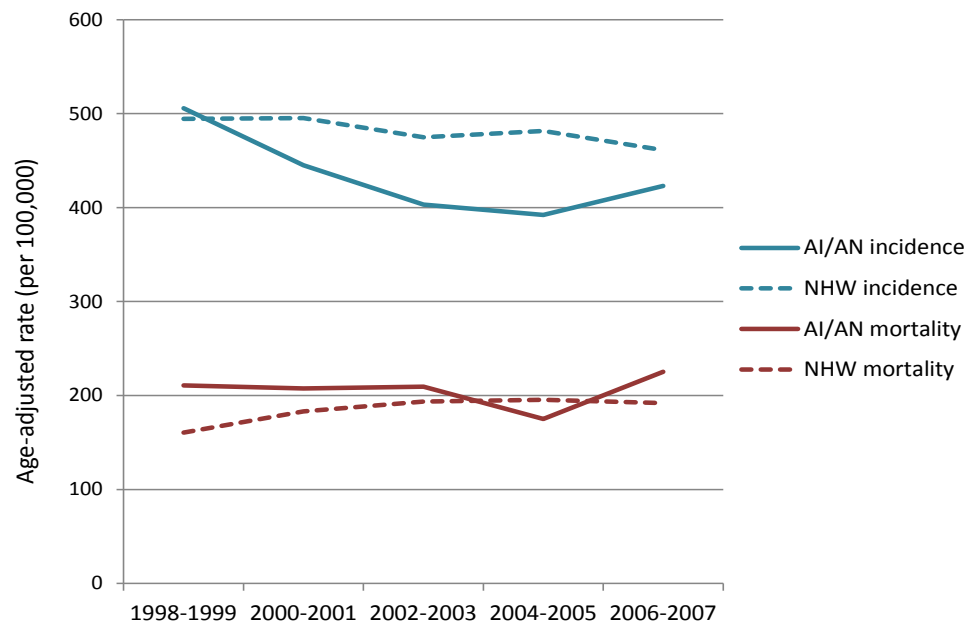
Incidence, selected cancer sites per 100,000 population, calculated using invasive cases only

Cancer	n	Rate (95% CI)	NHW Rate (95% CI)
All Sites	778	406.1 (375.7, 438.6)	470.8 (467.6, 474.0)
Prostate (male)	69	91.3 (69.0, 120.4)	143.0 (140.4, 145.6)
Breast (female)	106	90.4 (73.0, 111.4)	130.9 (128.6, 133.2)
Lung & Bronchus	134	79.1 (65.4, 95.1)	68.3 (67.1, 69.5)
Colorectal	75	41.4 (31.9, 53.2)	44.9 (43.9, 45.9)
Blood Cancers	79	38.8 (30.1, 49.8)	38.9 (38.0, 39.8)

Racial Misclassification

Cancer estimates for AI/AN may be obscured when AI/AN are incorrectly classified as another race (usually White) in public data sources. Each year the NW Tribal Registry partners with the three northwest state cancer registries to correct AI/AN racial misclassification and improve cancer estimates for Northwest AI/AN. Please contact us if you are interested in additional cancer data for your community.

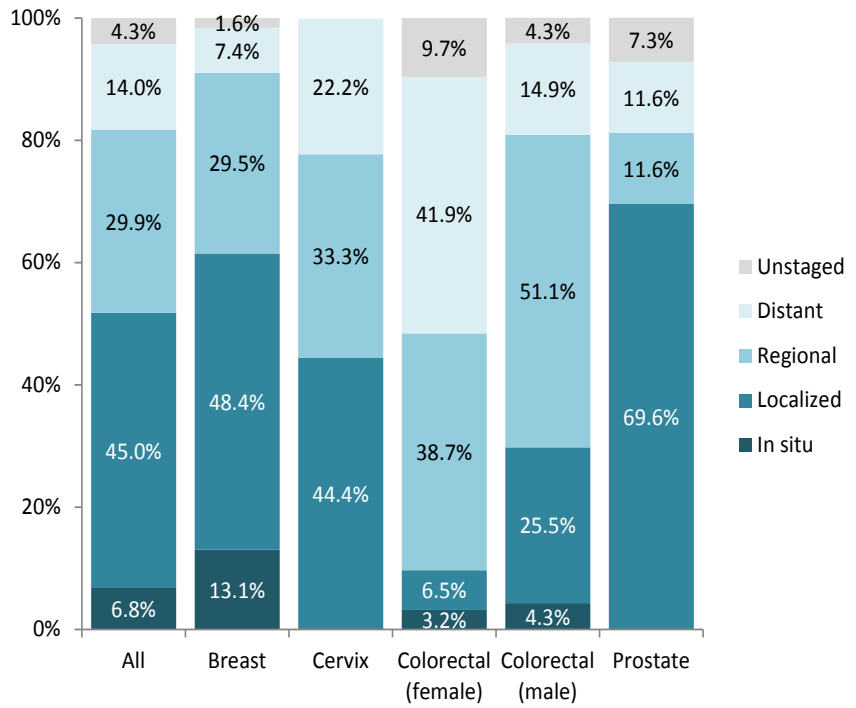
Incidence and mortality 10 year trends, AI/AN and NHW



Cancer screening measures: Portland Area IHS (Idaho, Oregon, & Washington, 2010 reporting year)	
56% of women ages 21-64 had a pap smear in the past 3 years	All IHS: 59% 2010 Goal: 90%
38% of women ages 52-64 had a mammogram in the past 2 years	All IHS: 48% 2010 Goal: 70%
38% of patients ages 51-80 had colorectal cancer screening in the past year	All IHS: 37% 2010 Goal: 50%
27% of tobacco users received tobacco cessation counseling in the past year	All IHS: 25% 2010 Goal: not determined

The Oregon Breast and Cervical Cancer Program provides cancer screening for low-income, uninsured, and medically underserved women. For eligibility criteria and additional information, call 1-877-255-7070.

Stage at diagnosis, screen-detectable cancers



Note: In situ and localized may be referred to as 'early stage'; regional and distant are often considered 'late stage'

Data Notes

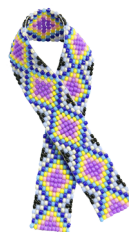
- Unless specified as non-Hispanic White (NHW), all data are for American Indian or Alaska Native (AI/AN alone or in combination with another race) residents of Oregon diagnosed from 2003-2007
- Unless specified, counts (n) and proportions (%) include all reportable cancer sites and stages
- Rates are interpreted as the number of cases (or deaths) that would occur in a population of 100,000 people over one year. All rates are age-adjusted to the 2000 US standard population.
- Incidence rates include invasive cancers plus in situ urinary bladder.
- Mortality rates are incidence-based and include a death from any type of cancer. These are based on cancers diagnosed from 1996-2007, and do not represent complete mortality.
- Blood cancers include leukemia, Hodgkin lymphoma, non-Hodgkin lymphoma, and multiple myeloma
- Data are from Oregon State Cancer Registry; compiled by Northwest Tribal Registry Project and Northwest Tribal Cancer Control Project, NPaiHB

Cancer mortality, selected sites per 100,000 population

Cancer	n	Rate (95% CI)	NHW Rate (95% CI)
All Sites	354	202.5 (180.4, 226.9)	193.4 (191.3, 195.4)
Lung & Bronchus	102	64.0 (51.5, 79.0)	58.2 (57.1, 59.4)
Prostate (male)	16	27.6 (14.9, 48.4)	20.1 (19.1, 21.1)
Colorectal	38	21.8 (15.0, 31.0)	18.3 (17.7, 18.9)
Breast (female)	19	18.2 (10.5, 30.2)	21.5 (20.6, 22.5)
Blood cancers	32	16.8 (11.1, 24.9)	17.8 (17.2, 18.5)

Resources

For more information about statistical terms and interpretation, see www.cancer.gov/statistics/glossary
 For more information on stage at diagnosis definitions, see www.cancer.gov/cancertopics/factsheet/detection/staging
 Oregon State Cancer Registry:
<http://public.health.oregon.gov/PHD/ODPE/HPCDP/OSCAR/>
 Oregon Breast & Cervical Cancer Program:
<http://public.health.oregon.gov/PHD/OFH/WRH/BCC/>
 Screening information from Indian Health Service



For more information

Megan Hoopes, MPH
 Northwest Tribal Registry Project Director
 503-416-3261 or mhoopes@npaihb.org