

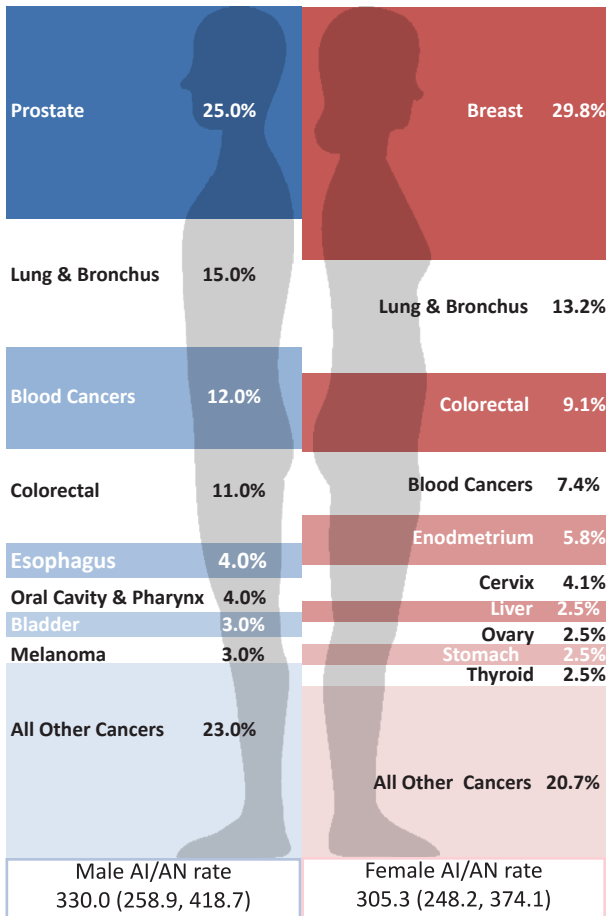
Fact Sheet

Cancer among American Indians and Alaska Natives in Idaho, 2003-2007



Northwest Portland Area Indian Health Board
Indian Leadership for Indian Health

Leading cancer sites by sex



Leading cancer sites by age group and sex

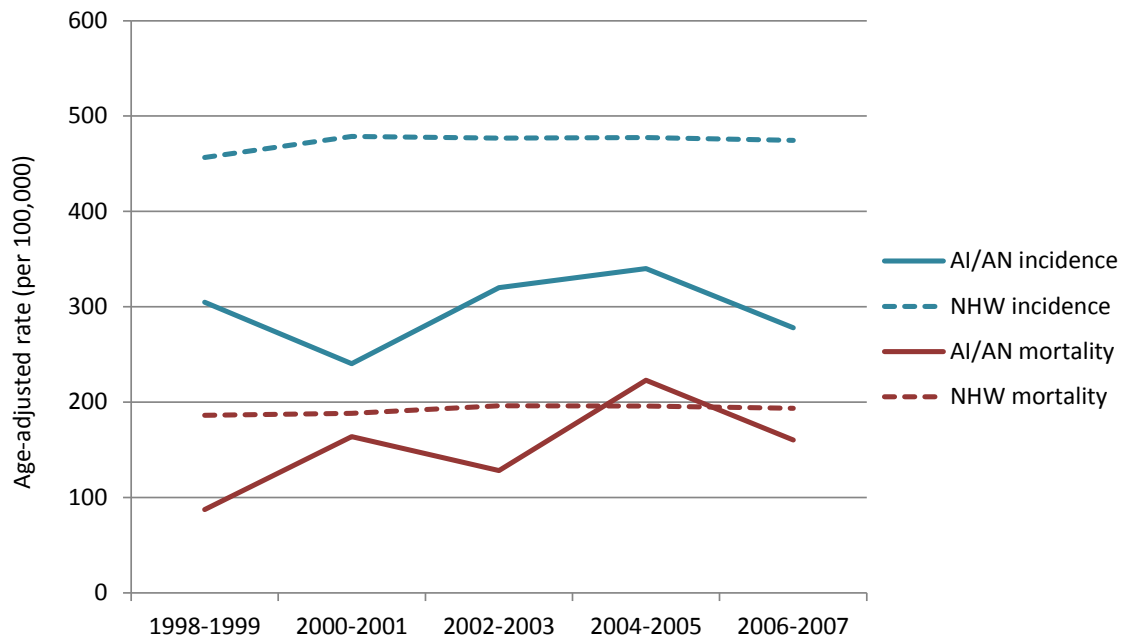
Rank	20-39		40-64		65+	
	Male	Female	Male	Female	Male	Female
1	--	Cervix; Thyroid (25.0% ea.)	Prostate (20.5%)	Breast (33.3%)	Prostate (32.7%)	Breast (29.1%)
2	--	--	Lung & bronchus (18.0%)	Endometrium; Lung & bronchus (10.5% ea.)	Lung & bronchus (15.4%)	Lung & bronchus (18.2%)
3	--	--	Blood cancers (12.8%)	Colorectal (8.8%)	Colorectal (11.5%)	Blood cancers; Colorectal (10.9% ea.)

Note: younger age groups had too few cases to report

Incidence, selected cancer sites

Cancer	n	Rate (95% CI)	NHW Rate (95% CI)
All Sites	208	308.8 (265.0, 358.7)	475.2 (469.8, 480.5)
Prostate (male)	25	86.8 (53.8, 138.4)	168.3 (163.7, 173.0)
Breast (female)	31	87.5 (57.9, 129.7)	120.5 (116.8, 124.3)
Lung & Bronchus	31	45.9 (30.4, 67.9)	59.0 (57.1, 60.9)
Blood Cancers	21	33.4 (19.5, 54.4)	42.7 (41.1, 44.3)
Colorectal	22	34.5 (20.7, 55.3)	43.6 (42.0, 45.2)

Incidence and mortality 10 year trends, AI/AN and NHW



Racial Misclassification

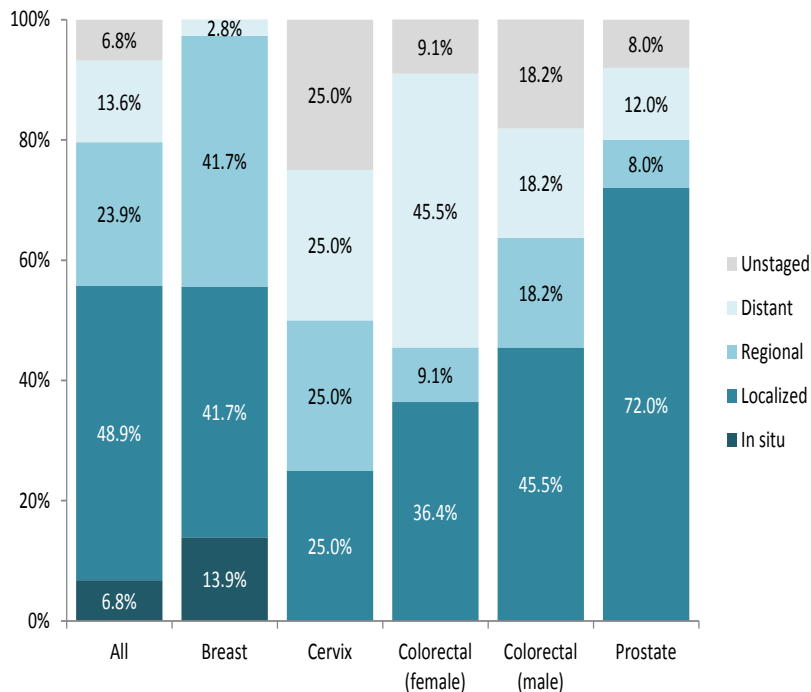
Cancer estimates for AI/AN may be obscured when AI/AN are incorrectly classified as another race (usually White) in public data sources. Each year the NW Tribal Registry partners with the three northwest state cancer registries to correct AI/AN racial misclassification and improve cancer estimates for Northwest AI/AN. Please contact us if you are interested in additional cancer data for your community.

Cancer screening measures: Portland Area IHS (Idaho, Oregon, & Washington, 2010 reporting year)

56% of women ages 21-64 had a pap smear in the past 3 years	All IHS: 59% 2010 Goal: 90%
38% of women ages 52-64 had a mammogram in the past 2 years	All IHS: 48% 2010 Goal: 70%
38% of patients ages 51-80 had colorectal cancer screening in the past year	All IHS: 37% 2010 Goal: 50%
27% of tobacco users received tobacco cessation counseling in the past year	All IHS: 25% 2010 Goal: not determined

The Idaho Department of Health and Welfare's Women's Health Check program offers FREE mammograms and Pap tests for women who qualify. For more information and eligibility criteria, call 1-800-926-2588.

Stage at diagnosis, screen-detectable cancers



Note: *In situ* and localized may be referred to as 'early stage'; regional and distant are often considered 'late stage'

Data Notes

- Unless specified as non-Hispanic White (NHW), all data are for American Indian or Alaska Native (AI/AN alone or in combination with another race) residents of Idaho, diagnosed from 2003-2007
- Unless specified, counts (n) and proportions (%) include all reportable cancer sites and stages
- Rates are interpreted as the number of cases (or deaths) that would occur in a population of 100,000 people over one year. All rates are age-adjusted to the 2000 US standard population.
- Incidence rates include invasive cancers plus *in situ* urinary bladder.
- Mortality rates are incidence-based and include a death from any type of cancer. These are based on cancers diagnosed from 1992-2007, and do not represent complete mortality.
- Blood cancers include leukemia, Hodgkin lymphoma, non-Hodgkin lymphoma, and multiple myeloma
- Data are from Cancer Data Registry of Idaho, compiled by Northwest Tribal Registry Project and Northwest Tribal Cancer Control Project, NPaiHB

Cancer mortality, selected sites per 100,000 population

Cancer	n	Rate (95% CI)	NHW Rate (95% CI)
All Sites	113	185.1 (150.2, 226.7)	195.7 (192.3, 199.2)
Lung & Bronchus	28	42.1 (27.1, 63.8)	51.7 (49.9, 53.5)
Breast (female)	7	28.2 (10.7, 61.4)	23.7 (22.0, 25.4)
Blood Cancers	14	24.9 (12.9, 44.5)	22.1 (21.0, 23.3)
Colorectal	13	23.4 (11.9, 42.3)	17.5 (16.5, 18.6)

Resources

- For more information about statistical terms and interpretation, see www.cancer.gov/statistics/glossary
- For more information on stage at diagnosis definitions, see www.cancer.gov/cancertopics/factsheet/detection/staging
- Cancer Data Registry of Idaho: www.idcancer.org
- Women's Health Check: www.healthandwelfare.idaho.gov
- Screening Resources: www.operationpinkbag.org
- Screening information from Indian Health Service

For more information

Megan Hoopes, MPH
503-416-3261 or mhoopes@npaihb.org

