

Diabetes Audit Results, Portland Area, 2004-2012

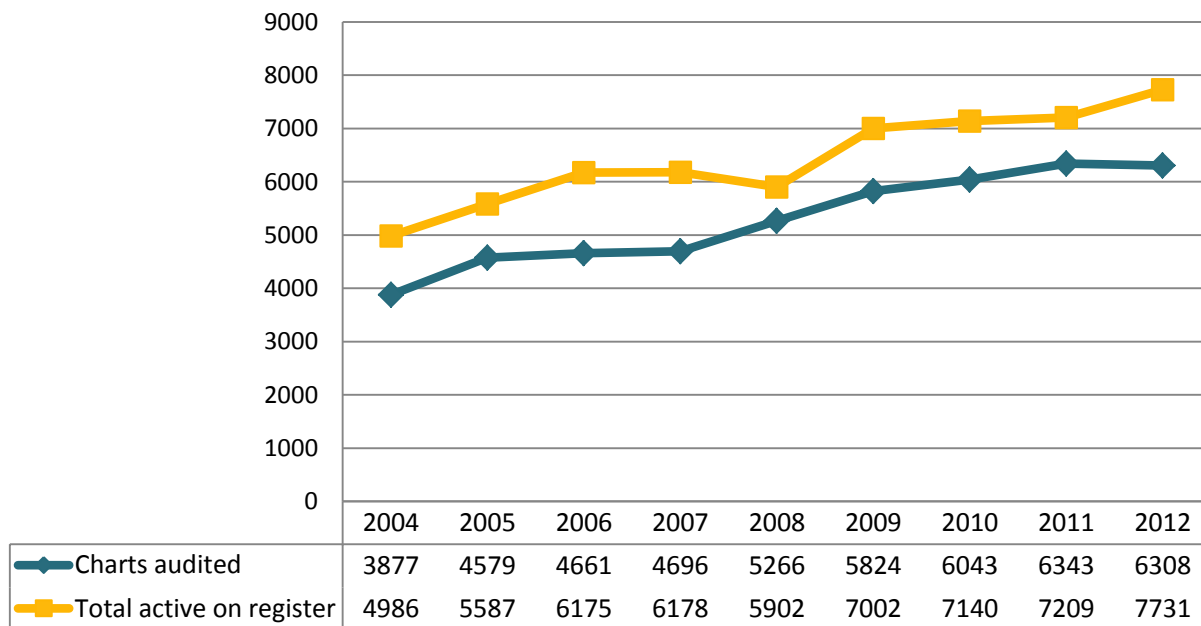
Site-Specific Trends

The following report contains information from your program's annual diabetes audit submission to the Indian Health Service over the past few years. The report was prepared for your site by the Western Tribal Diabetes Project at the Northwest Portland Area Indian Health Board, which receives Special Diabetes Program for Indians (SDPI) funding to assist Northwest tribes in managing their diabetes information. If you have any questions about the report, or if you would like this report in Excel format, please contact the Western Tribal Diabetes Project at wtdp@npaihb.org or (800) 862-5497.

Notes:

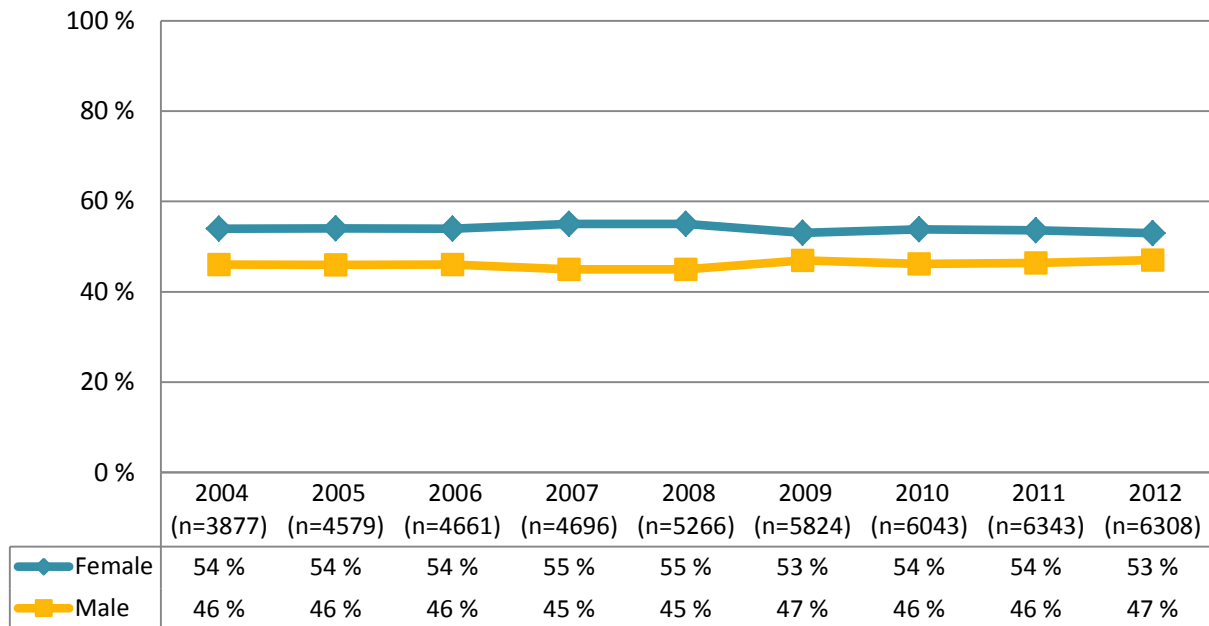
- Due to rounding, charts will occasionally not add up to 100%.
- Data are presented by the year in which the data were submitted. Most likely, the patient care reflected in the audit was delivered in the previous year. For example, the columns 2008 in these charts reflect care that was delivered in 2007.
- Blank spaces have been left for some indicators in years when information was not reported.

Patients in the Diabetes Register

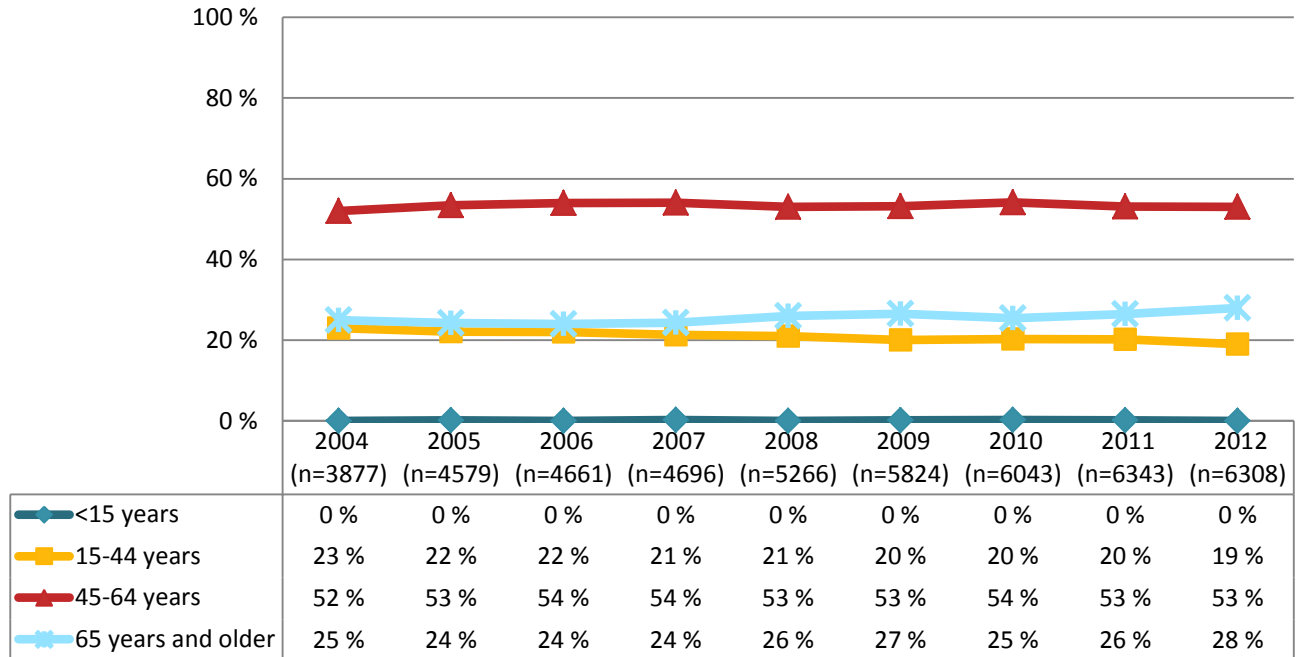


Diabetes Audit Results, Portland Area, 2004-2012

Gender of Patients with Diabetes

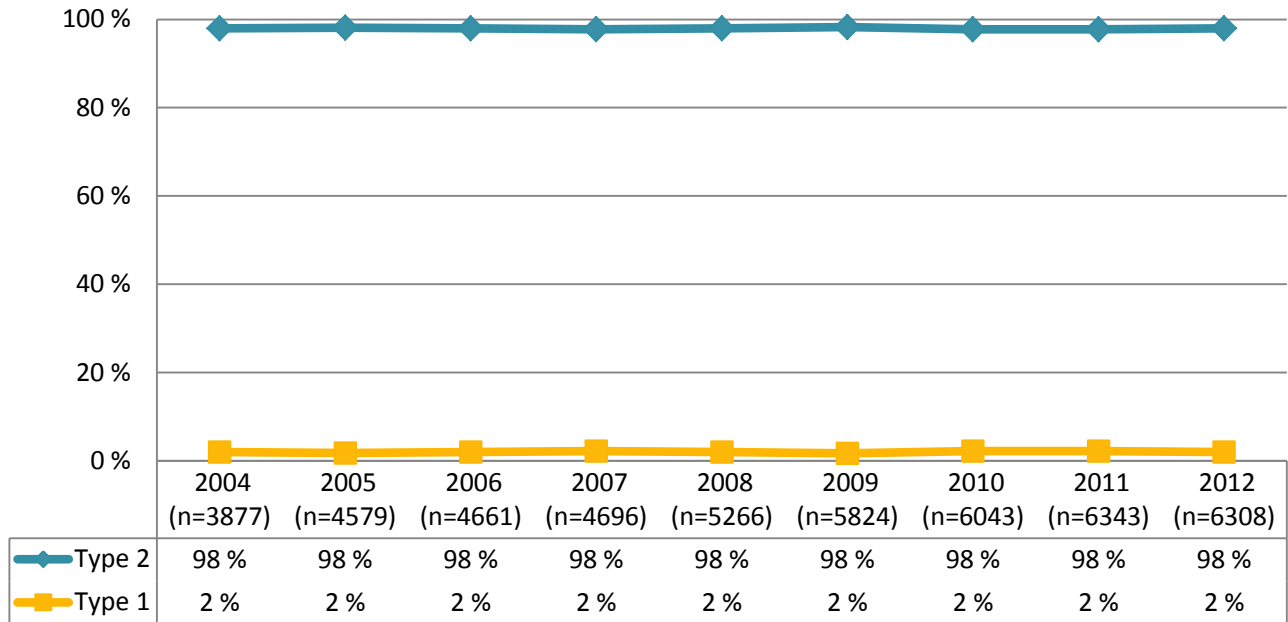


Age of Patients with Diabetes

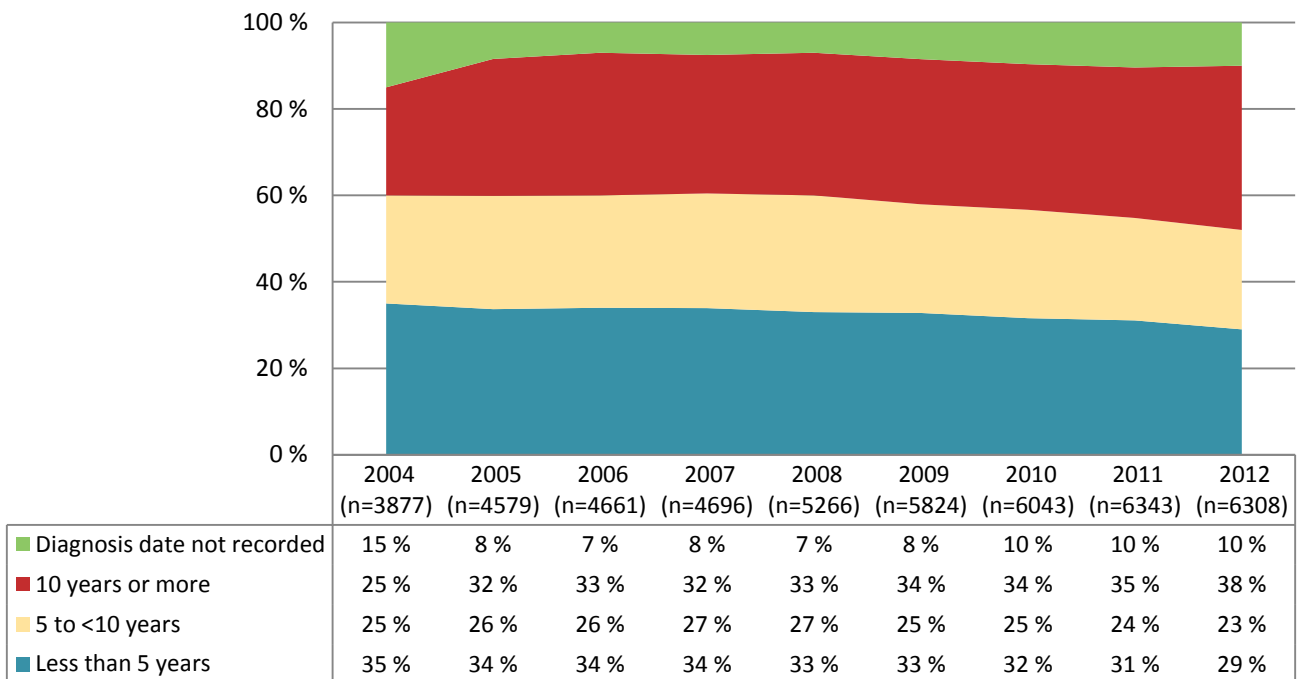


Diabetes Audit Results, Portland Area, 2004-2012

Diabetes Type



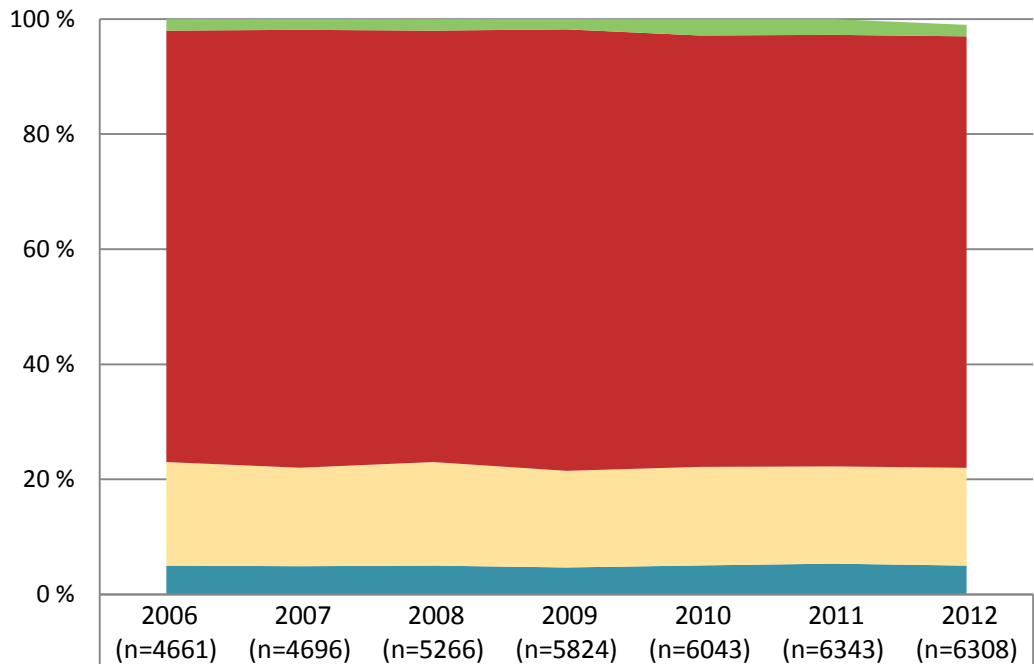
Duration of Diabetes



A blank indicates a category not reported on in a given year; FY = Fiscal Year, the year in which data were submitted.

Diabetes Audit Results, Portland Area, 2004-2012

Weight Control



■ Height or weight missing	2 %	2 %	2 %	2 %	3 %	3 %	2 %
■ Obese (BMI 30.0 or above)	75 %	76 %	75 %	77 %	75 %	75 %	75 %
■ Overweight (BMI 25.0-25.9)	18 %	17 %	18 %	17 %	17 %	17 %	17 %
■ Normal (BMI < 25.0)	5 %	5 %	5 %	5 %	5 %	5 %	5 %
Overweight or obese (BMI 25 or above)	93 %	93 %	93 %	94 %	92 %	92 %	

Notes

Body Mass Index (BMI) is calculated using the last weight in the audit year recorded on a non-prenatal visit, along with the most recent height measured since the patient's 19th birthday. The formula is

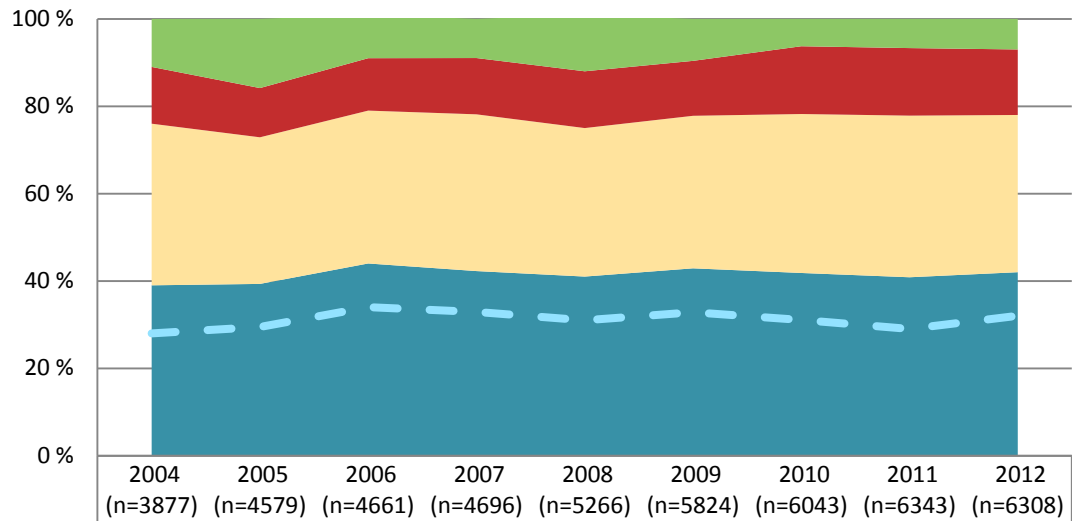
$$\text{BMI} = \text{weight (lbs)} \div \text{height (inches)} \div \text{height (inches)} \times 703$$

Before 2005, overweight and obesity were reported from the audit using cutoffs from the National Health and Nutrition Examination Survey (NHANES). Women were considered overweight with a BMI of 27.3 or higher and obese with BMI 32.3 or higher. Men were overweight at a BMI of 27.8 and obese at 31.1 or higher. These results are still calculated from audit data but are not presented here for the sake of clarity in the chart.

The bars in the graph reflect current cutoffs, which are the same for men and women. Overweight is defined as a BMI of 25 or higher and obesity is 30 or higher. Using these standards, more patients are considered overweight than with the older standards.

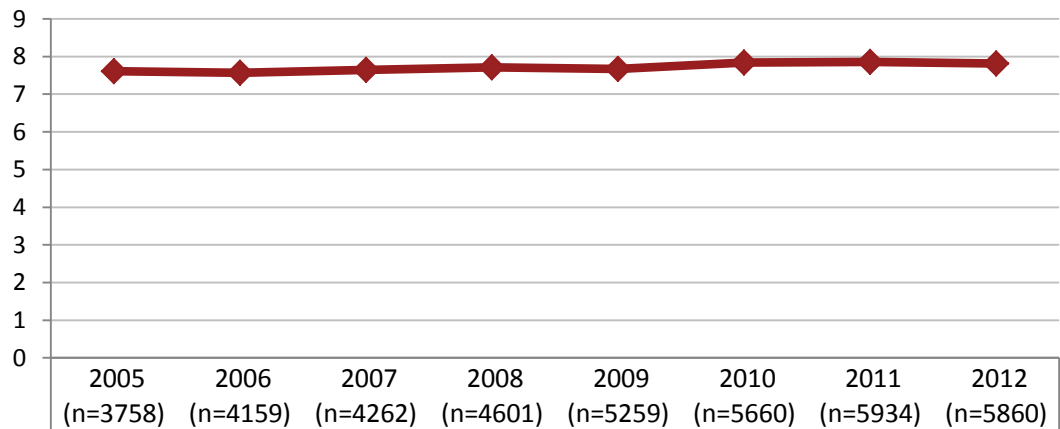
Diabetes Audit Results, Portland Area, 2004-2012

Hemoglobin A1c



HbA1c missing	11 %	16 %	10 %	9 %	13 %	10 %	6 %	7 %	7 %
HbA1c 10.0 or higher	13 %	11 %	12 %	13 %	13 %	13 %	16 %	15 %	15 %
HbA1c 7.0-9.9	37 %	34 %	35 %	36 %	34 %	35 %	36 %	37 %	36 %
HbA1c <7	39 %	39 %	44 %	42 %	41 %	43 %	42 %	41 %	42 %
HbA1c ≤6.5	28 %	29 %	34 %	33 %	31 %	33 %	31 %	29 %	32 %

Average Hemoglobin A1C



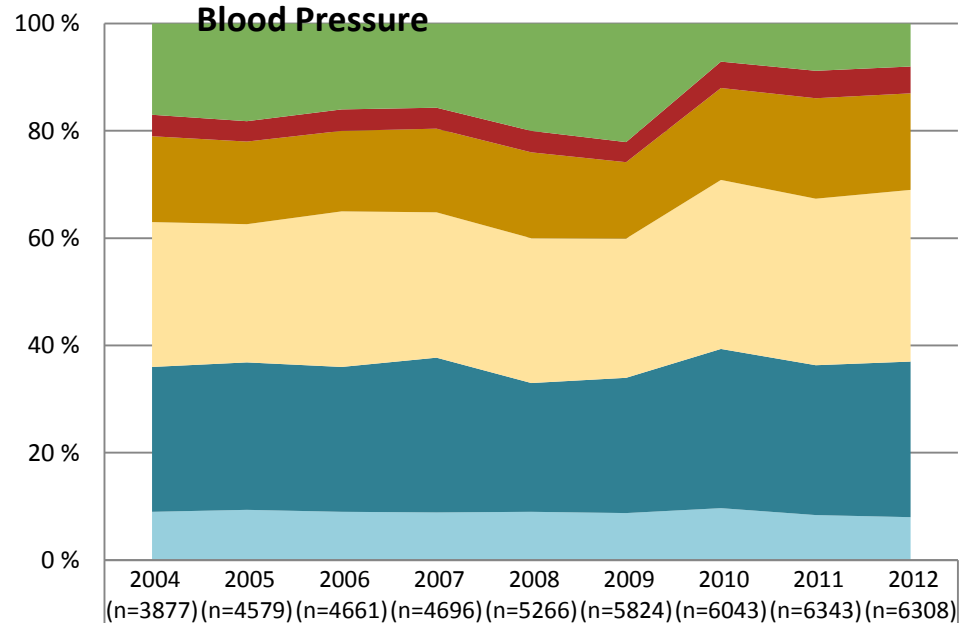
Mean HbA1c	7.614	7.570	7.647	7.710	7.673	7.843	7.86	7.81
Standard error	0.015	0.020	0.017	0.010	0.013	0.012	0.01	0.03
95% CI upper limit	7.642	7.609	7.681	7.730	7.699	7.867	7.881	7.866
95% CI lower limit	7.585	7.531	7.614	7.690	7.647	7.818	7.842	7.760

A blank indicates a category not reported on in a given year; FY = Fiscal Year, the year in which data were submitted.

Diabetes Audit Results, Portland Area, 2004-2012

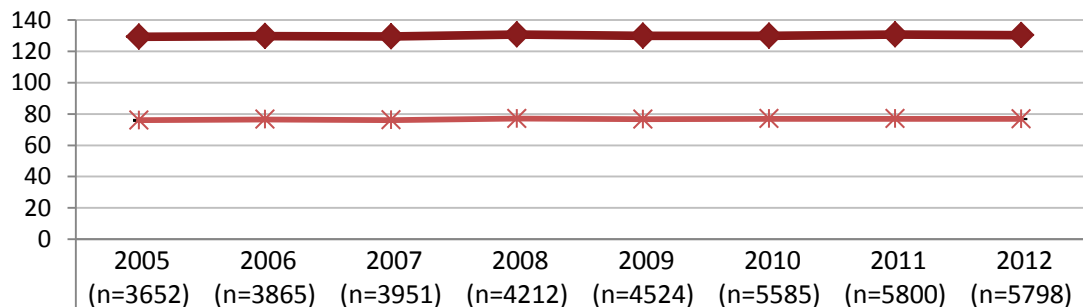
Before 2010: Based on the average of the last 3 blood pressure measurements taken within the audit year. If <3 measurements were taken, blood pressure control is undetermined.

In 2010: Based on the average of the last 2 or 3 blood pressure measurements taken within the audit year. If <2 measurements were taken, blood pressure control is undetermined.



BP control undetermined	17 %	18 %	16 %	16 %	20 %	22 %	7 %	9 %	8 %
Markedly poor (160/95 or higher)	4 %	4 %	4 %	4 %	4 %	4 %	5 %	5 %	5 %
Inadequate (140/90 - <160/<95)	16 %	15 %	15 %	16 %	16 %	14 %	17 %	19 %	18 %
Adequate (130/80 - <140/<90)	27 %	26 %	29 %	27 %	27 %	26 %	32 %	31 %	32 %
Target (120/70 - <130/<80)	27 %	27 %	27 %	29 %	24 %	25 %	30 %	28 %	29 %
Ideal control (<120/<70)	9 %	9 %	9 %	9 %	9 %	9 %	10 %	8 %	8 %

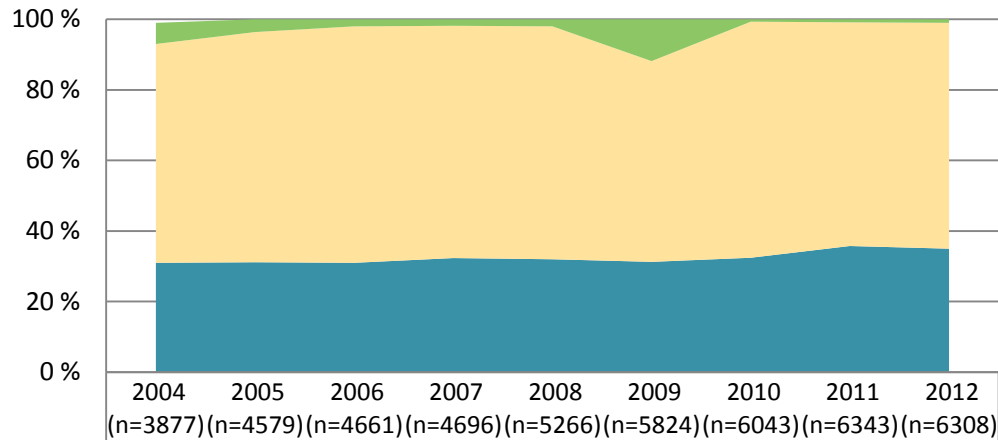
Average Blood Pressure



◆ Mean systolic BP	129.213	129.570	129.419	130.590	129.778	129.798	130.78	130.35
Standard error	0.112	0.140	0.124	0.080	0.095	0.079	0.07	0.18
95% CI upper limit	129.433	129.844	129.662	130.747	129.964	129.952	130.922	130.701
95% CI lower limit	128.993	129.296	129.176	130.433	129.592	129.644	130.646	130.003
* Mean diastolic BP	76.001	76.460	76.130	76.980	76.564	76.868	76.87	76.79
Standard error	0.073	0.090	0.079	0.050	0.065	0.055	0.05	0.12
95% CI upper limit	76.144	76.636	76.284	77.078	76.691	76.975	76.960	77.031
95% CI lower limit	75.859	76.284	75.976	76.882	76.437	76.761	76.782	76.559

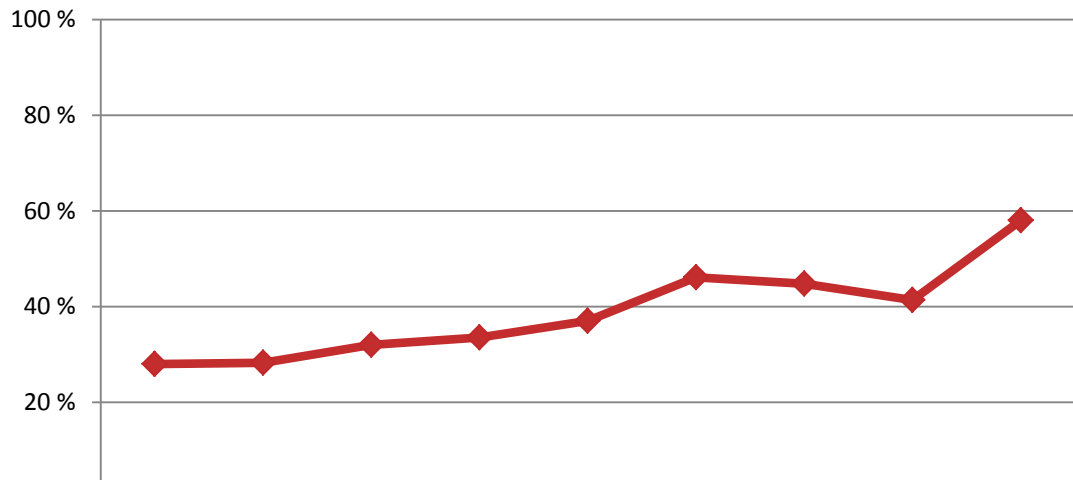
Diabetes Audit Results, Portland Area, 2004-2012

Tobacco Use



■ Tobacco use not documented	6 %	4 %	2 %	2 %	2 %	12 %	1 %	1 %	1 %
■ Not a current tobacco user	62 %	65 %	67 %	66 %	66 %	57 %	67 %	63 %	64 %
■ Current tobacco user	31 %	31 %	31 %	32 %	32 %	31 %	32 %	36 %	35 %

Tobacco Cessation Referrals

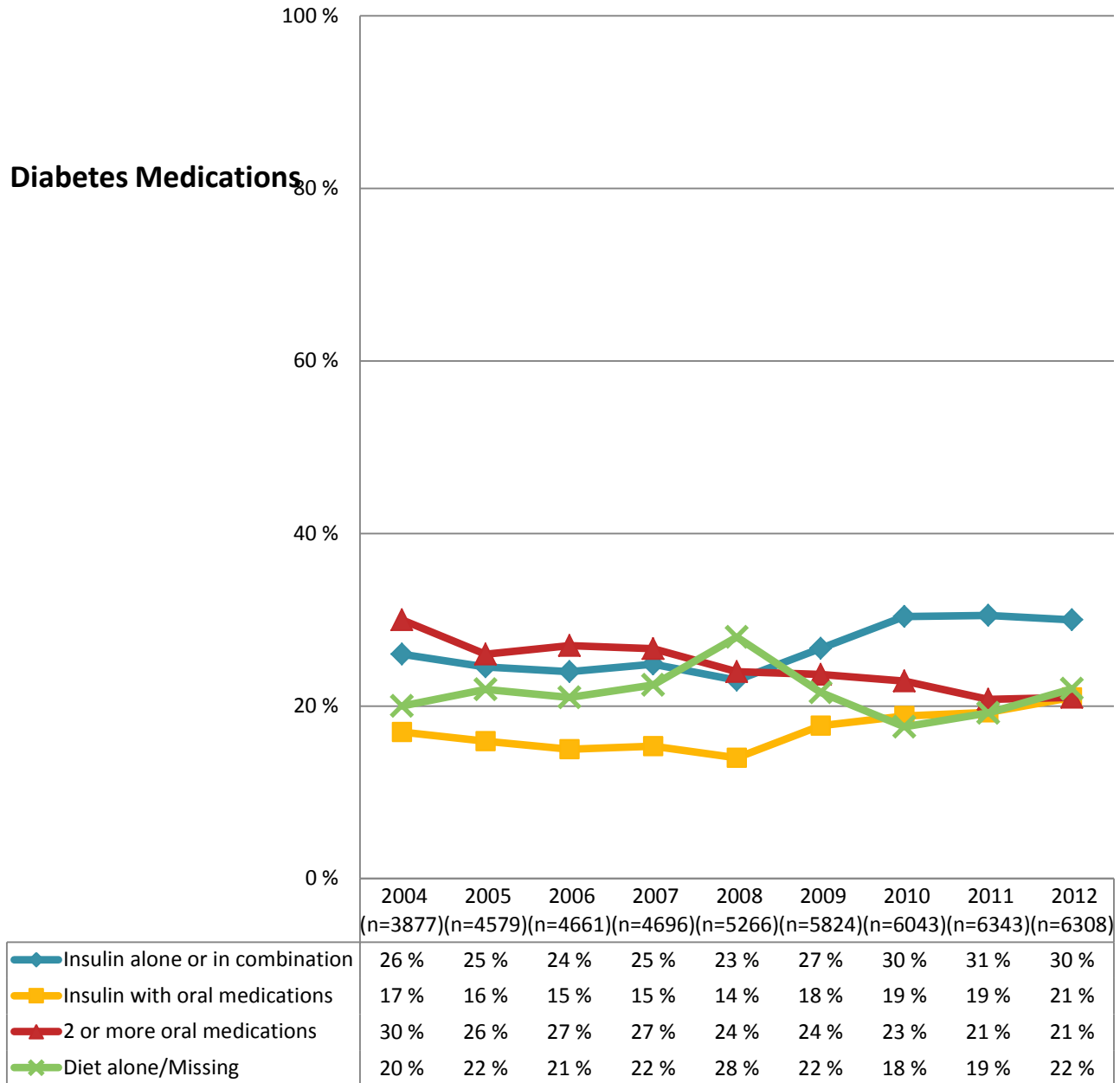


◆ Counsel rate/users	28 %	28 %	32 %	34 %	37 %	46 %	45 %	41 %	58 %
----------------------	------	------	------	------	------	------	------	------	------

Note: The 'n' in this graph refers to the total number of tobacco users included in the audit.

A blank indicates a category not reported on in a given year; FY = Fiscal Year, the year in which data were submitted.

Diabetes Audit Results, Portland Area, 2004-2012

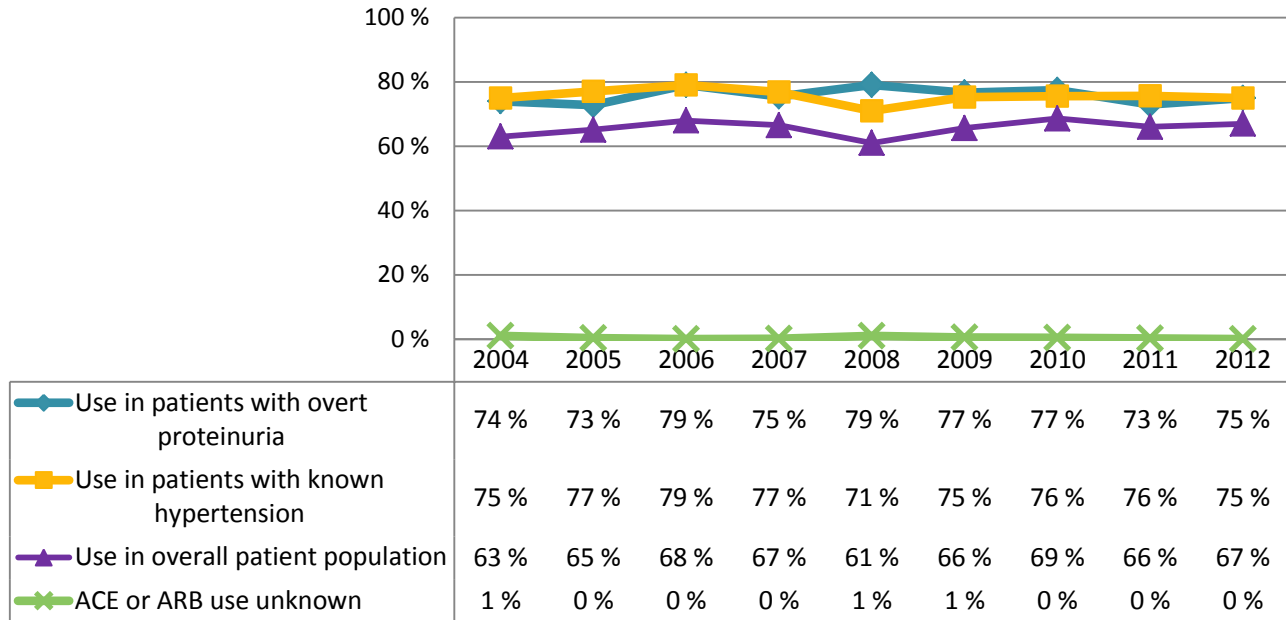


Notes

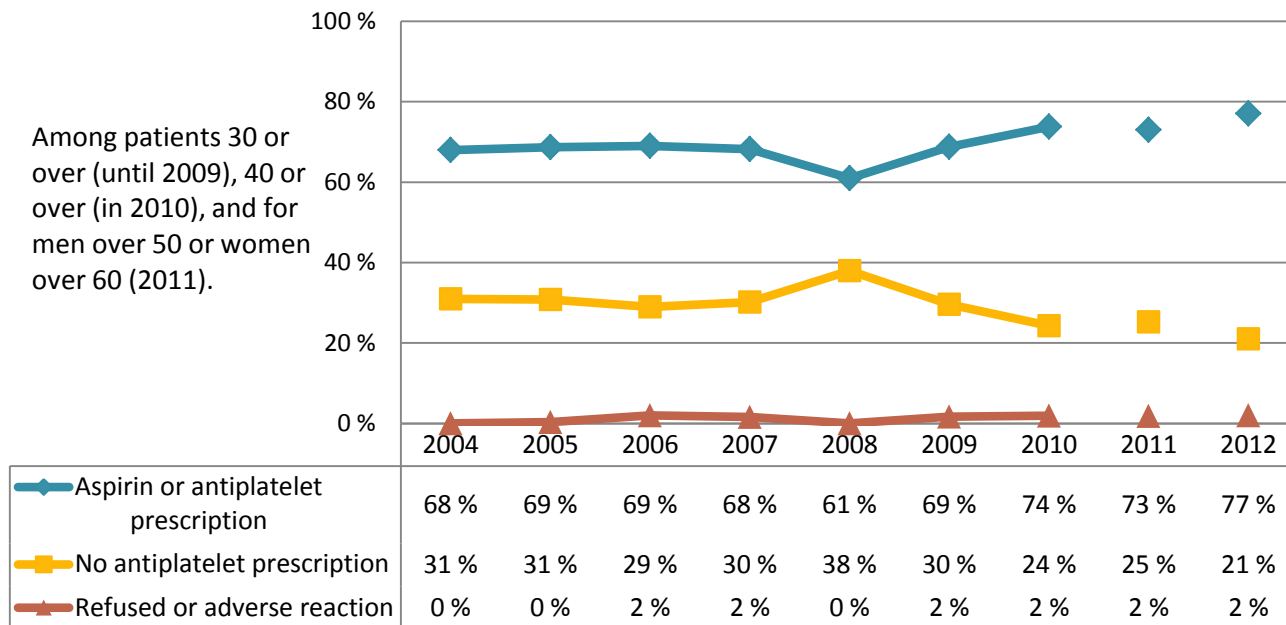
"Diet and exercise alone" is the default selection in RPMS. If no records are found in the patient's chart of medications prescribed or dispensed in the last six months of the audit year, the patient is classified as being treated with "diet and exercise alone." The percentages for this category may be inflated if patients did not refill their prescriptions at the clinic in the last six months of the audit year. You can enter medication reviews as historical RXs so that the audit report will reflect those prescriptions.

Diabetes Audit Results, Portland Area, 2004-2012

ACE Inhibitor or ARB Prescriptions



Antiplatelet Therapy

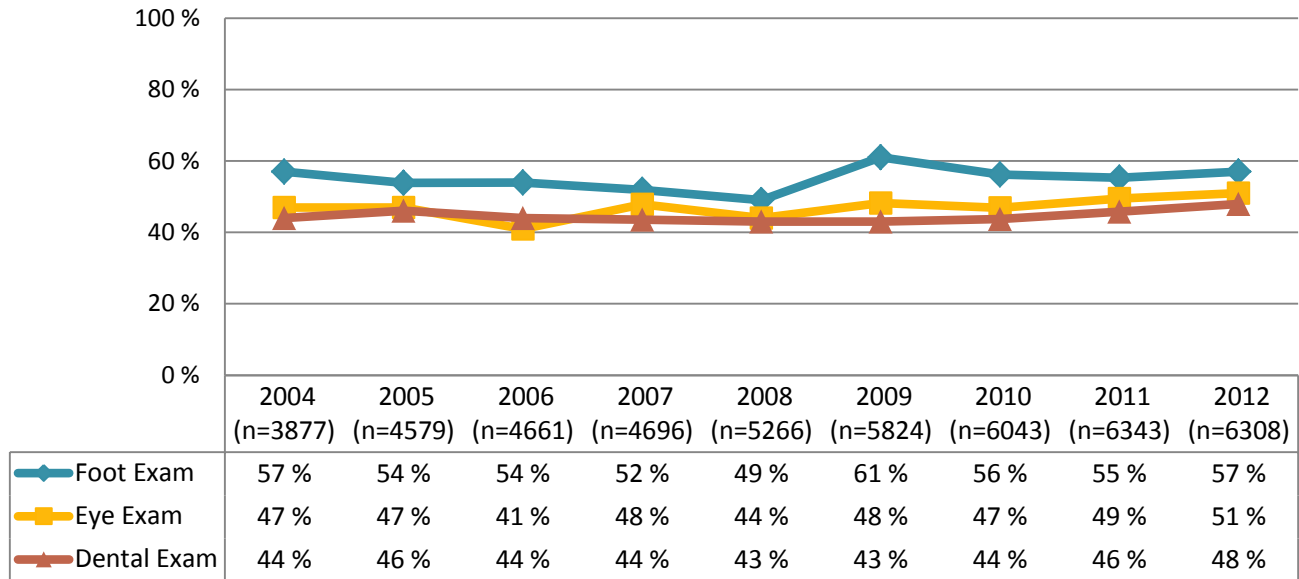


Denominators (n=) are not displayed on this page. These charts represent various subsets of patients, and not the entire population included in the audit.

A blank indicates a category not reported on in a given year; FY = Fiscal Year, the year in which data were submitted.

Diabetes Audit Results, Portland Area, 2004-2012

Annual Examinations

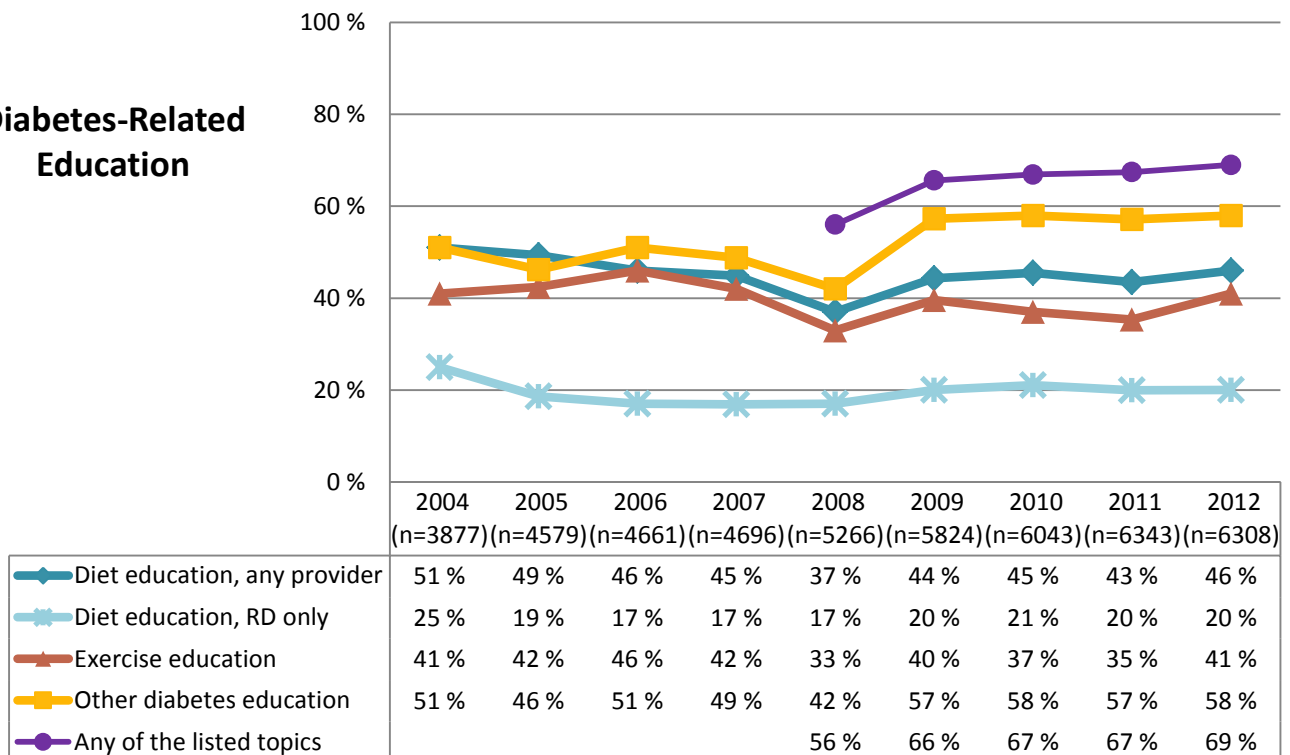


Eye Exam: A dilated fundoscopic exam conducted by a primary care provider, optometrist or ophthalmologist, or fundoscopic photographs reviewed by an ophthalmologist.

Foot Exam: An examination of the feet that includes neurologic and vascular evaluation as well as visual inspection for deformities or lesions.

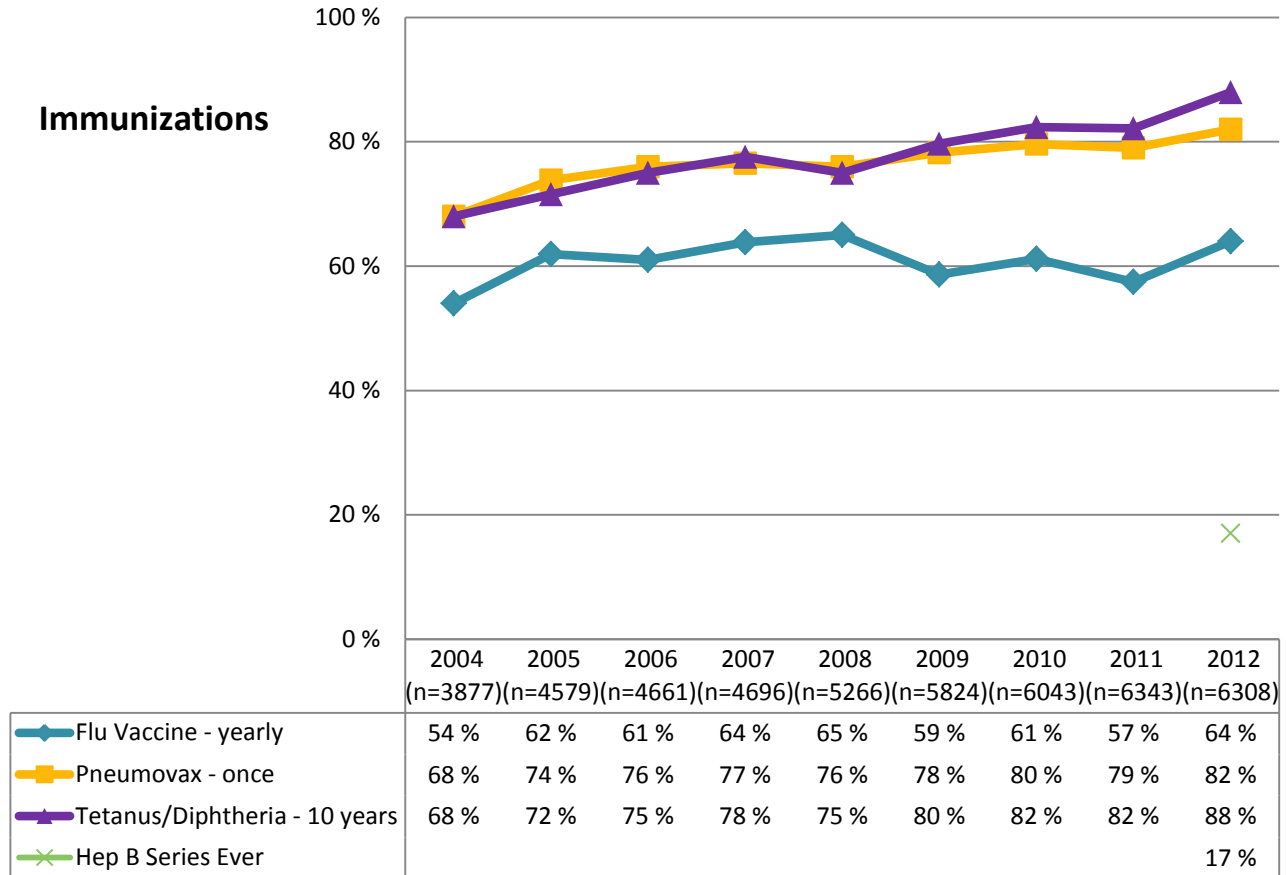
Dental Exam: The dental examination is one that includes evaluation of the teeth (if present), gingiva and mucosal surfaces.

Diabetes-Related Education

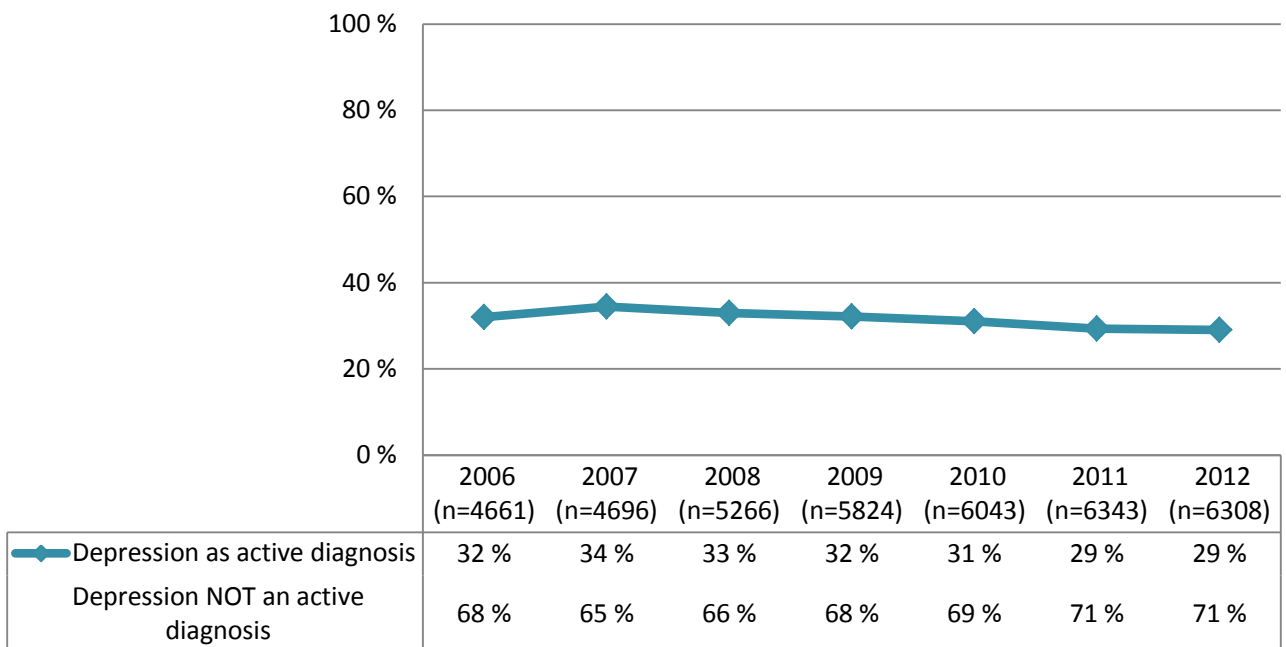


Diabetes Audit Results, Portland Area, 2004-2012

Immunizations



Diagnosed Depression

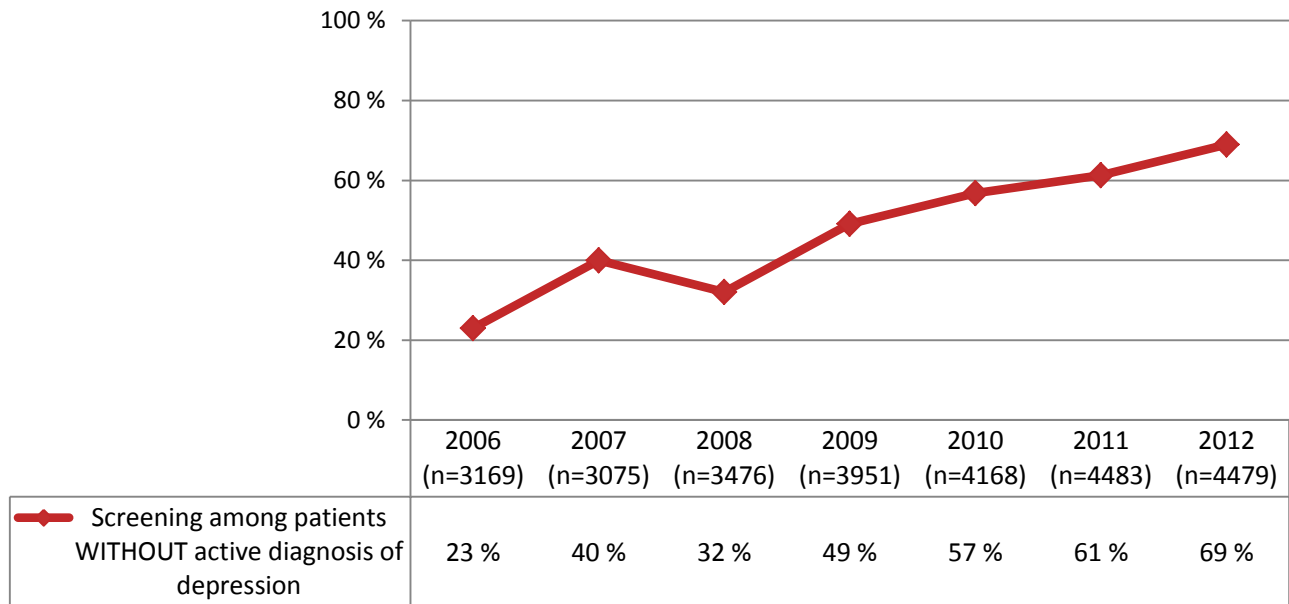


Note: Depression and depression screening were added to the audit in 2005.

A blank indicates a category not reported on in a given year; FY = Fiscal Year, the year in which data were submitted.

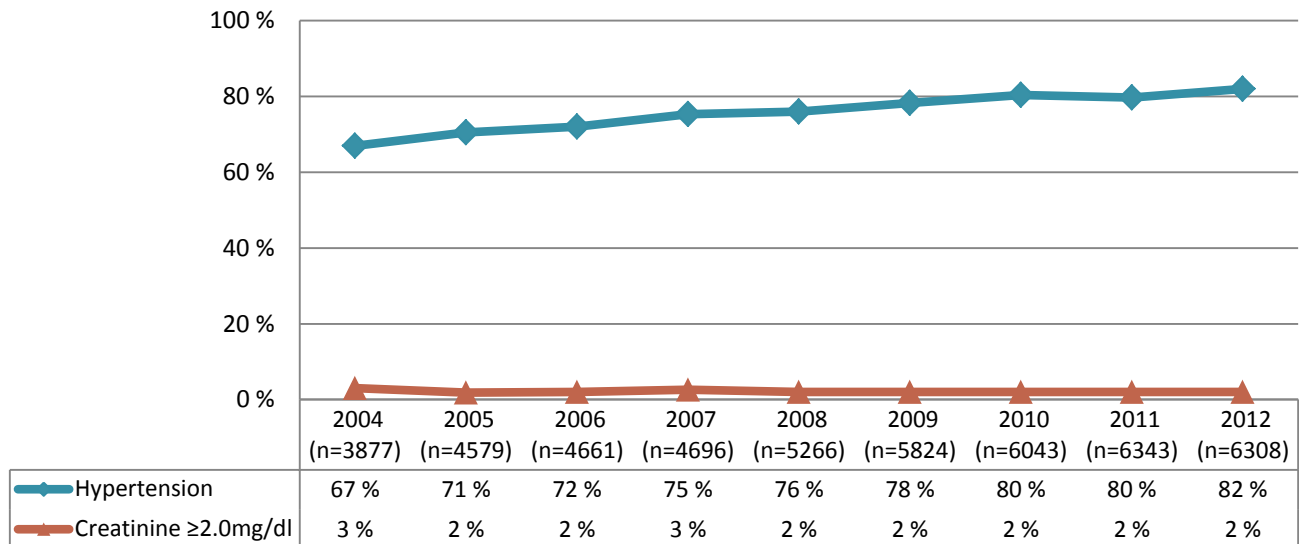
Diabetes Audit Results, Portland Area, 2004-2012

Depression Screening among Patients without Active Depression Diagnoses



Note: Depression and depression screening were added to the audit in FY2005.

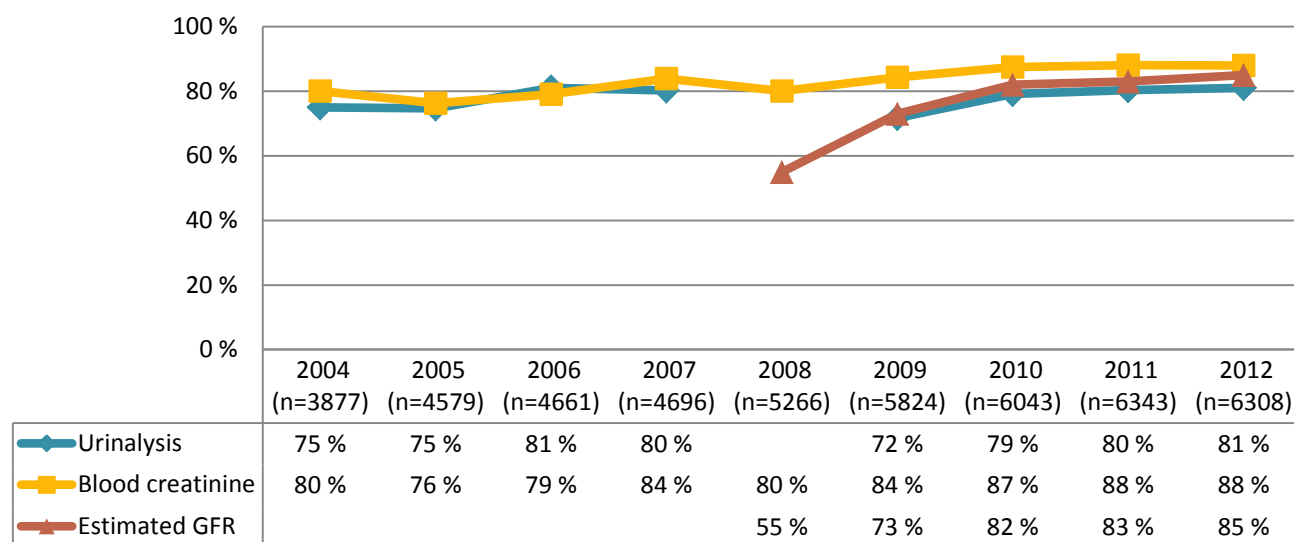
Patients with Hypertension or Elevated Blood Creatinine



Patient has "known hypertension" if hypertension is on the problem list or the patient has had at least 3 visits with a diagnosis of hypertension.

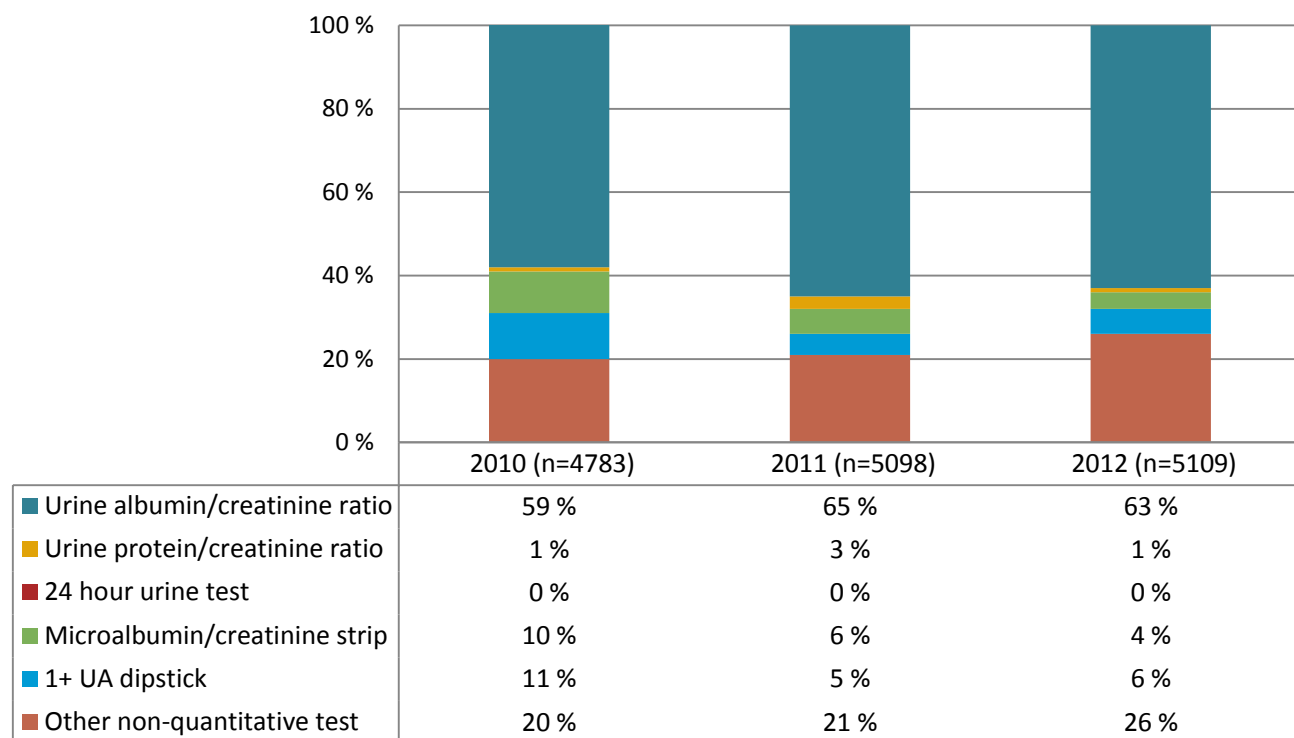
Diabetes Audit Results, Portland Area, 2004-2012

Renal Function Testing



Urinalysis results for 2008 exclude non-quantitative tests (e.g., dipstick) so cannot be compared to other years' data. 2009 data were also collected using different definitions than before. Estimated GFR was added in 2008.

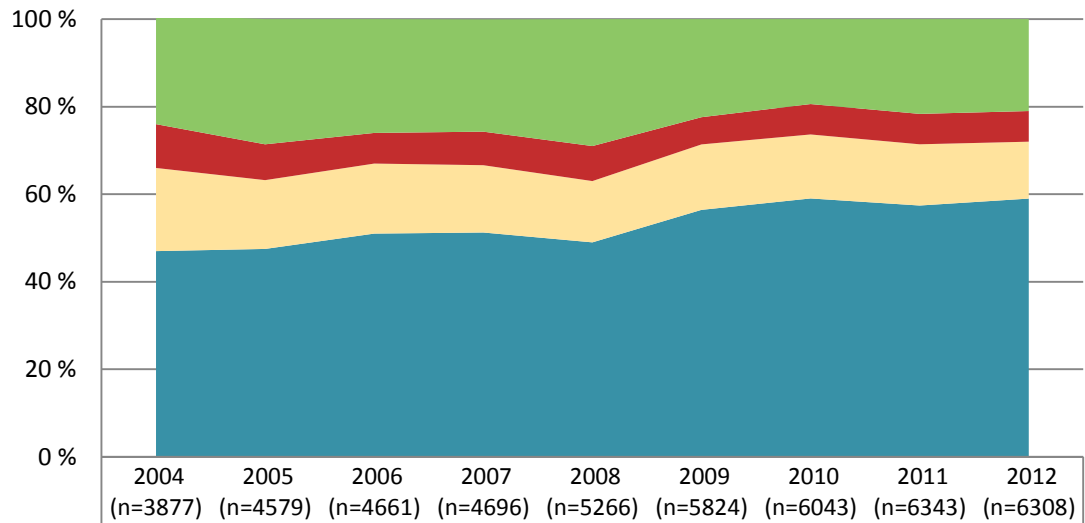
Type of Urine Protein Testing



A blank indicates a category not reported on in a given year; FY = Fiscal Year, the year in which data were submitted.

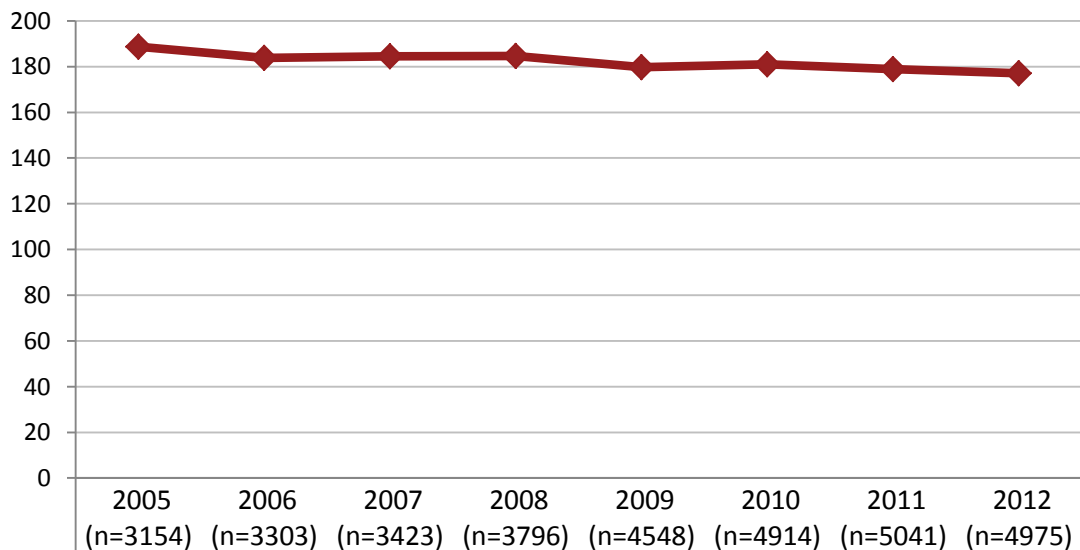
Diabetes Audit Results, Portland Area, 2004-2012

Cholesterol



■ Not tested	25 %	29 %	26 %	26 %	29 %	22 %	19 %	22 %	21 %
■ High (240 mg/dl or more)	10 %	8 %	7 %	8 %	8 %	6 %	7 %	7 %	7 %
■ Borderline (200-239 g/dl)	19 %	16 %	16 %	15 %	14 %	15 %	15 %	14 %	13 %
■ Desirable (<200 mg/dl)	47 %	48 %	51 %	51 %	49 %	56 %	59 %	57 %	59 %

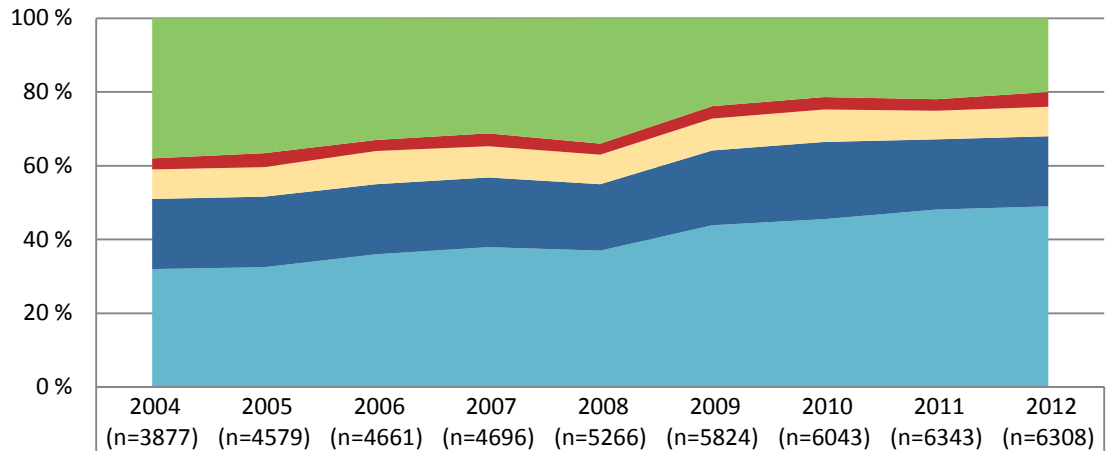
Average Cholesterol



◆ Mean cholesterol	188.713	183.800	184.459	184.670	179.828	180.993	178.92	177.07
Standard error	0.394	0.450	0.432	0.270	0.304	0.383	0.24	0.64
95% CI upper limit	189.484	184.682	185.305	185.199	180.423	181.745	179.381	178.328
95% CI lower limit	187.942	182.918	183.612	184.141	179.233	180.242	178.456	175.821

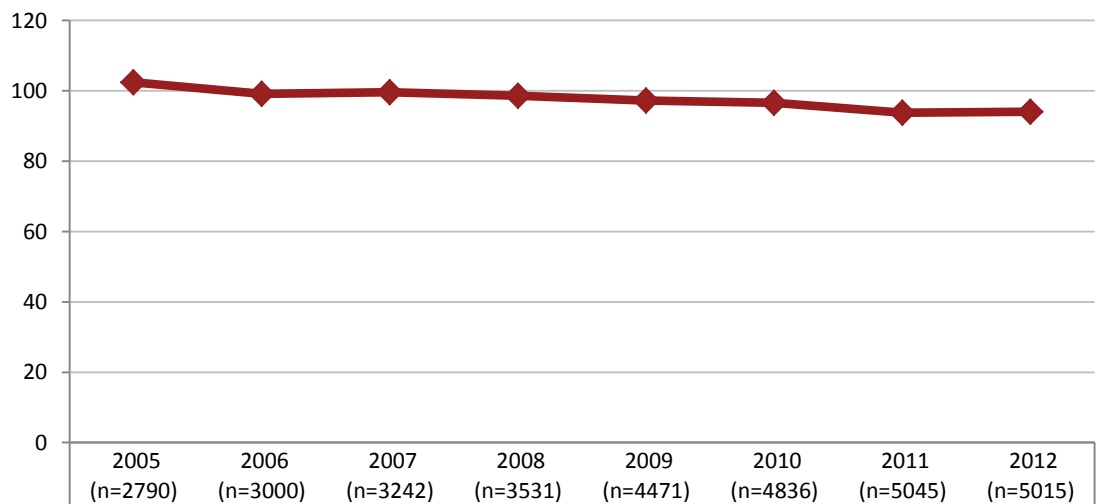
Diabetes Audit Results, Portland Area, 2004-2012

Low-Density Lipoprotein (LDL) Cholesterol



■	Not tested	38 %	37 %	33 %	31 %	34 %	24 %	21 %	22 %	20 %
■	LDL >160	3 %	4 %	3 %	3 %	3 %	3 %	3 %	3 %	4 %
■	LDL 130-160 mg/dl	8 %	8 %	9 %	8 %	8 %	9 %	9 %	8 %	8 %
■	LDL 100-129 mg/dl	19 %	19 %	19 %	19 %	18 %	20 %	21 %	19 %	19 %
■	Desirable (<100 mg/dl)	32 %	33 %	36 %	38 %	37 %	44 %	46 %	48 %	49 %

Average LDL Cholesterol

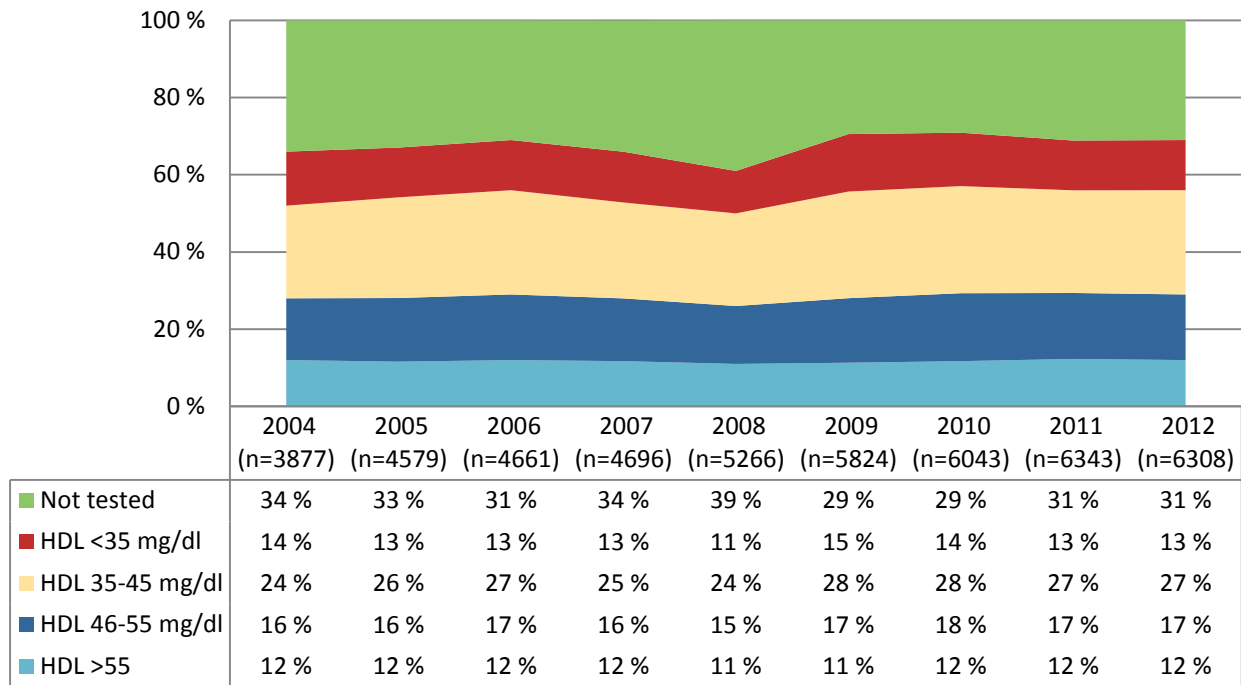


◆	Mean LDL	102.414	99.150	99.626	98.580	97.249	96.640	93.78	94.05
	Standard error	0.318	0.380	0.370	0.210	0.245	0.211	0.17	0.49
	95% CI upper limit	103.037	99.895	100.351	98.992	97.729	97.053	94.112	95.004
	95% CI lower limit	101.791	98.405	98.901	98.168	96.769	96.227	93.441	93.100

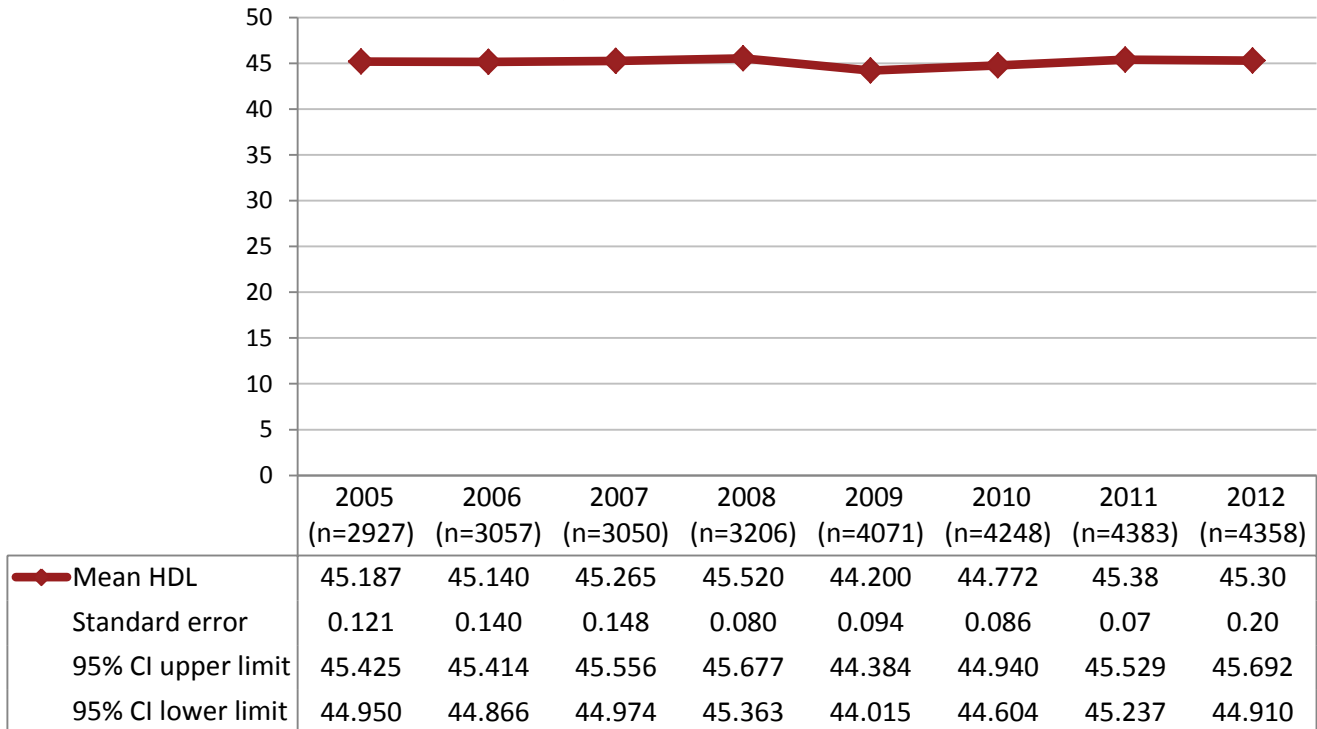
A blank indicates a category not reported on in a given year; FY = Fiscal Year, the year in which data were submitted.

Diabetes Audit Results, Portland Area, 2004-2012

High-Density Lipoprotein (HDL) Cholesterol

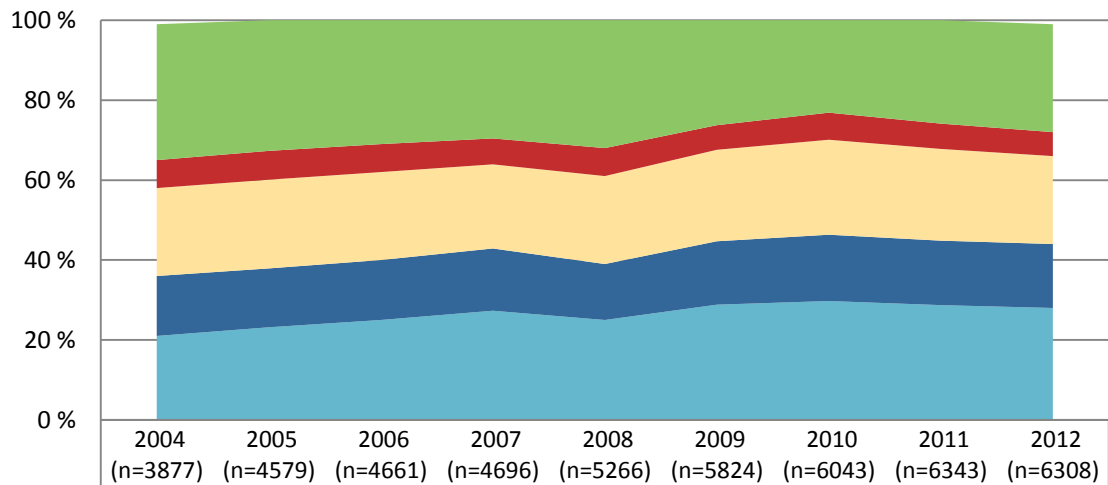


Average HDL Cholesterol



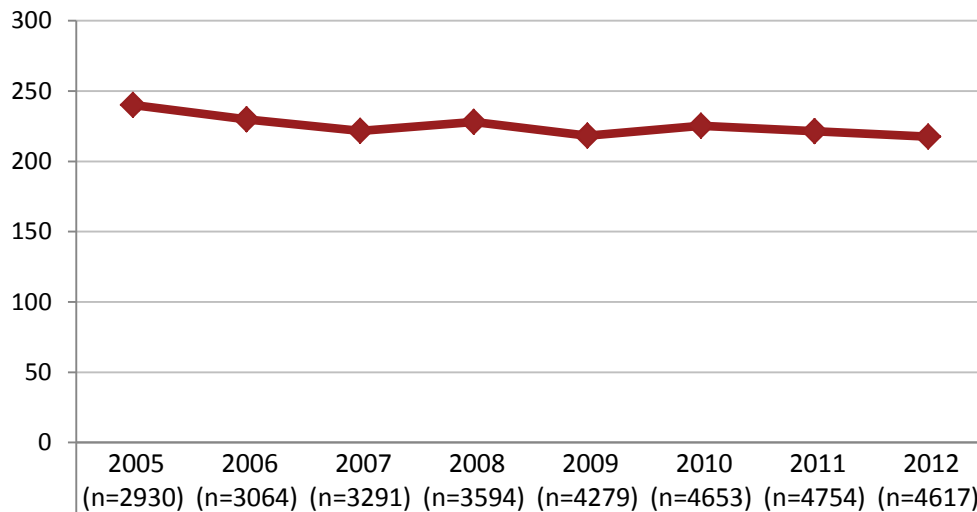
Diabetes Audit Results, Portland Area, 2004-2012

Triglycerides



■	Not tested	34 %	33 %	31 %	30 %	32 %	26 %	23 %	26 %	27 %
■	TG >400 mg/dl	7 %	7 %	7 %	6 %	7 %	6 %	7 %	6 %	6 %
■	TG 200-400 mg/dl	22 %	22 %	22 %	21 %	22 %	23 %	24 %	23 %	22 %
■	TG 150-199 mg/dl	15 %	15 %	15 %	16 %	14 %	16 %	17 %	16 %	16 %
■	Desirable (<150 mg/dl)	21 %	23 %	25 %	27 %	25 %	29 %	30 %	29 %	28 %

Average Triglyceride Levels

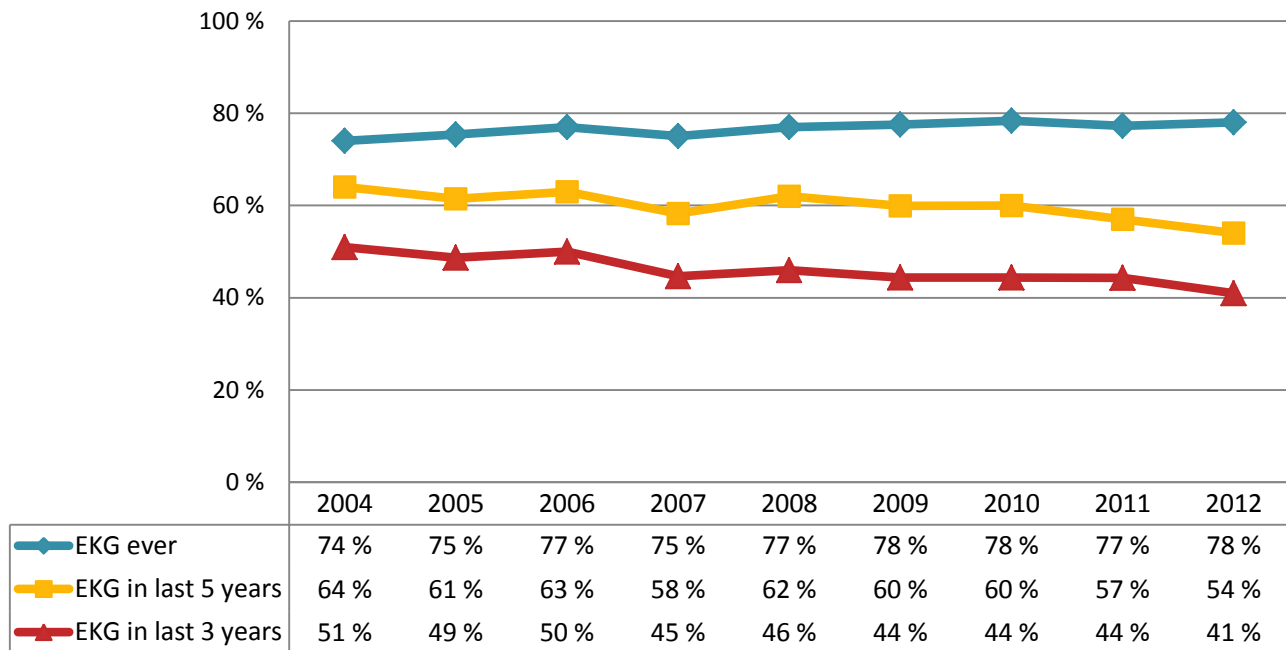


◆	Mean triglycerides	240.117	229.780	221.670	228.040	218.309	225.319	221.50	217.56
	Standard error	2.140	1.880	1.708	1.160	1.382	1.939	1.16	2.85
	95% CI upper limit	244.312	233.465	225.019	230.314	221.017	229.119	223.770	223.138
	95% CI lower limit	235.921	226.095	218.322	225.766	215.601	221.520	219.233	211.985

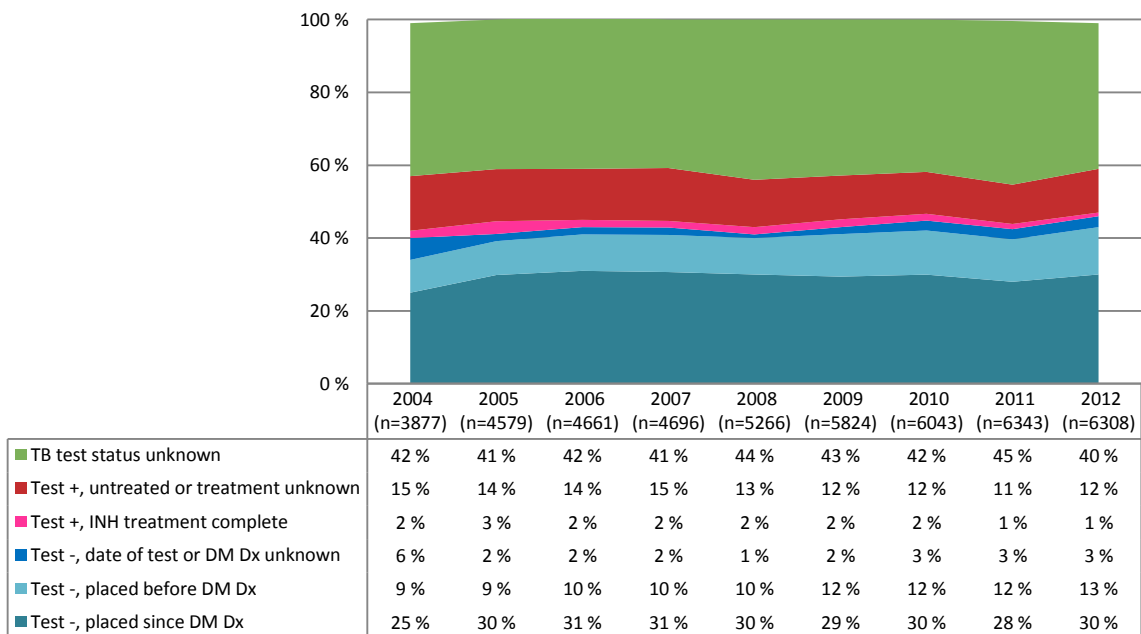
A blank indicates a category not reported on in a given year; FY = Fiscal Year, the year in which data were submitted.

Diabetes Audit Results, Portland Area, 2004-2012

EKG among Patients 30 and Older



Tuberculosis or PPD History



A negative PPD or blood test (added to the Audit in 2010) for tuberculosis is considered current if it was placed after the date of diabetes diagnosis. INH treatment is noted only if the treatment course was completed.

2011 Diabetes Audit: Dates of Service Jan 1 - Dec 31, 2011

This information is for the following groups:

Portland Area (n=6308 patients)

All Areas (n=99344 patients)

6308 sampled from 7731 active patients with diabetes (82%)

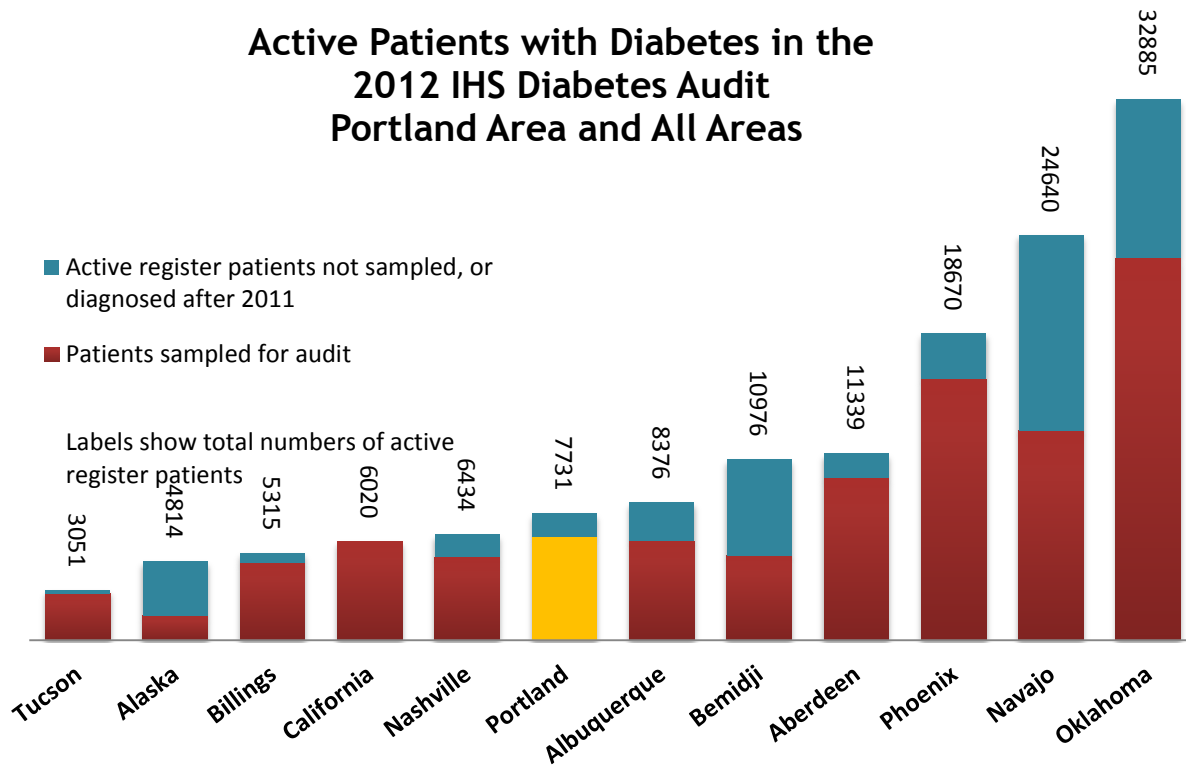
99344 sampled from 140251 active patients with diabetes (71%)

The following report contains information from your clinic’s Annual IHS Diabetes Audit submission. It also includes summary data from all reporting tribal, IHS and urban facilities in the Portland Area. The audit information is displayed side by side so that you can see how your site compares to the overall Portland Area. If you have any questions about the report, please contact the Western Tribal Diabetes Project at (800) 862-5497.

Who is this report about?

Patients identified by local Diabetes Program staff as having **type 1** or **type 2** diabetes and part of the active patient load, with **at least one primary care visit** in the calendar year. Only **American Indian and Alaska Native** patients are included in the audit.

Active Patients with Diabetes in the 2012 IHS Diabetes Audit Portland Area and All Areas



2011 Diabetes Audit: Dates of Service Jan 1 - Dec 31, 2011

This information is for the following groups:

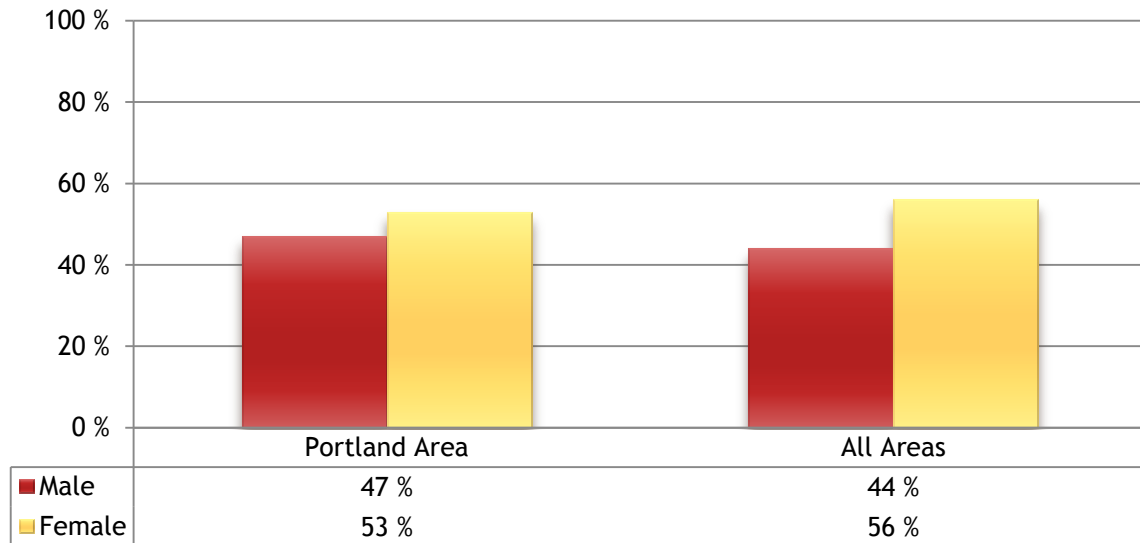
Portland Area (n=6308 patients)

All Areas (n=99344 patients)

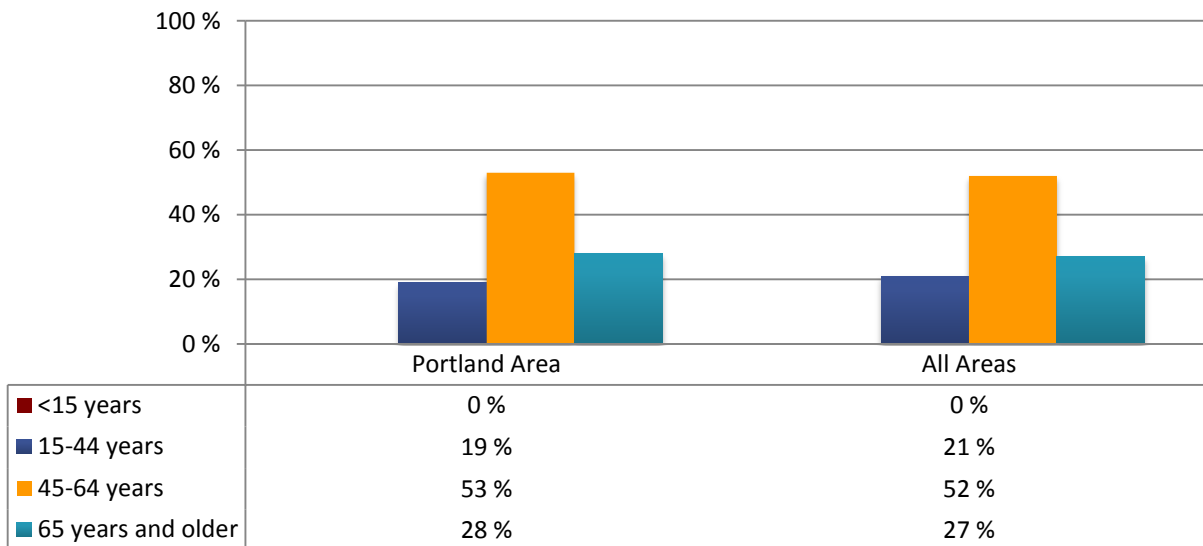
6308 sampled from 7731 active patients with diabetes (82%)

99344 sampled from 140251 active patients with diabetes (71%)

Gender of Patients with Diabetes



Age Distribution of Patients with Diabetes



2011 Diabetes Audit: Dates of Service Jan 1 - Dec 31, 2011

This information is for the following groups:

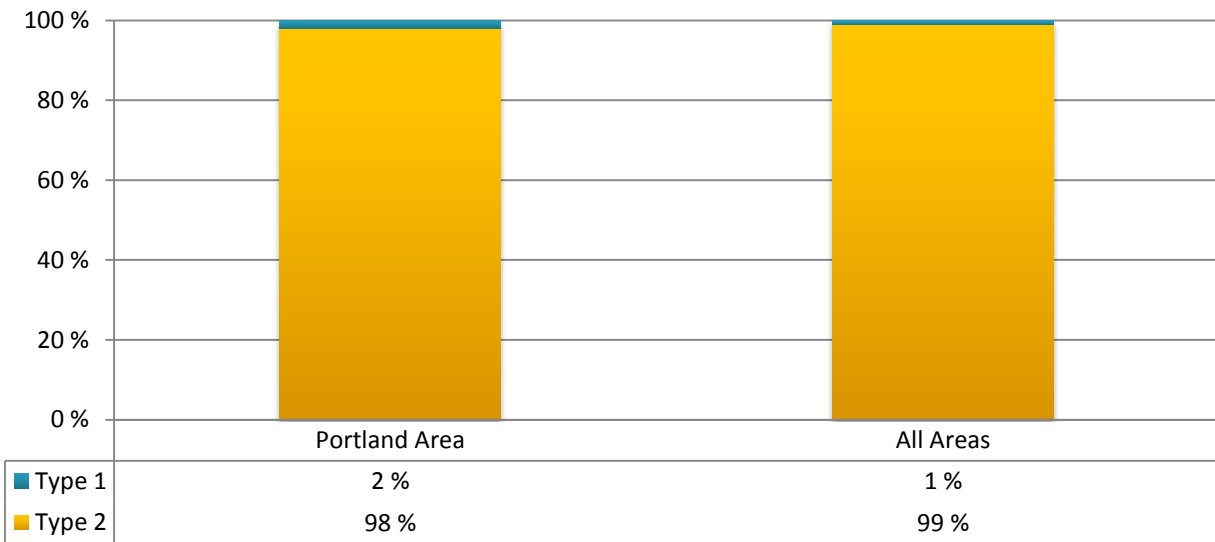
Portland Area (n=6308 patients)

All Areas (n=99344 patients)

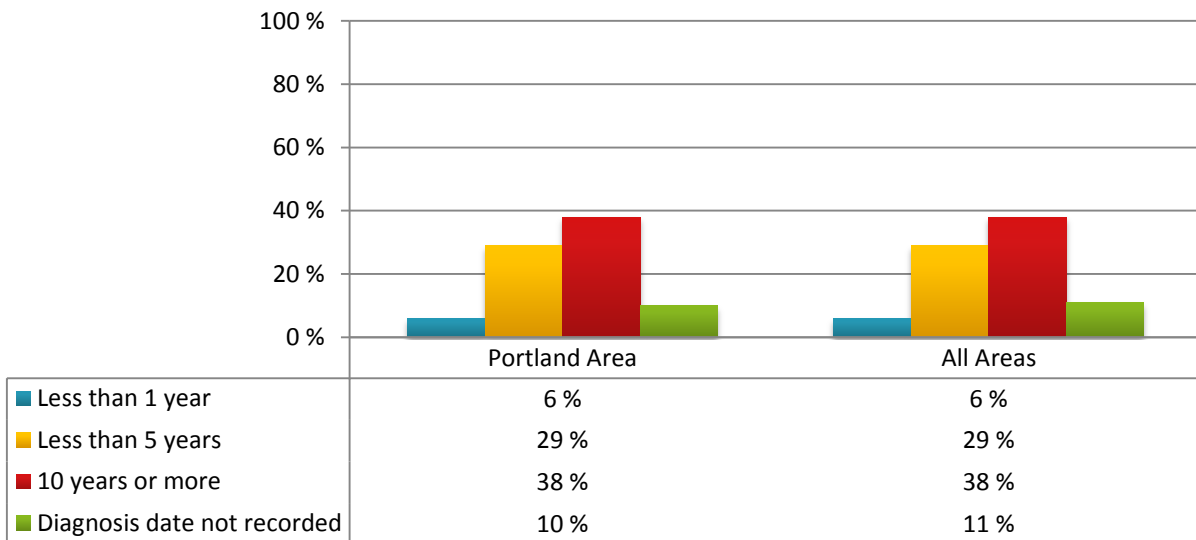
6308 sampled from 7731 active patients with diabetes (82%)

99344 sampled from 140251 active patients with diabetes (71%)

Type of Diabetes Diagnosed



Duration of Diabetes



2011 Diabetes Audit: Dates of Service Jan 1 - Dec 31, 2011

This information is for the following groups:

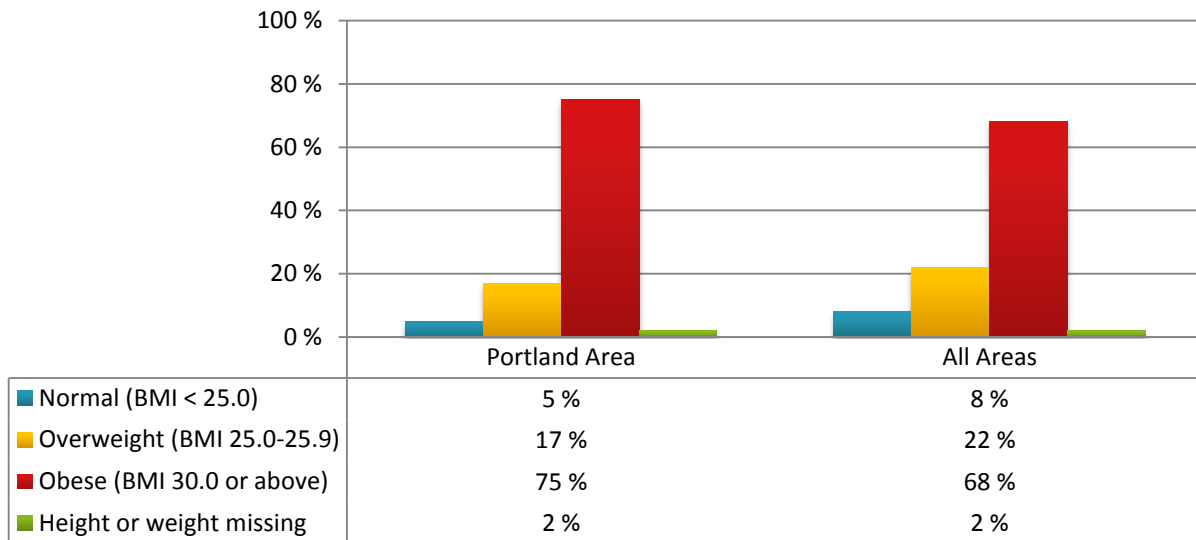
Portland Area (n=6308 patients)

All Areas (n=99344 patients)

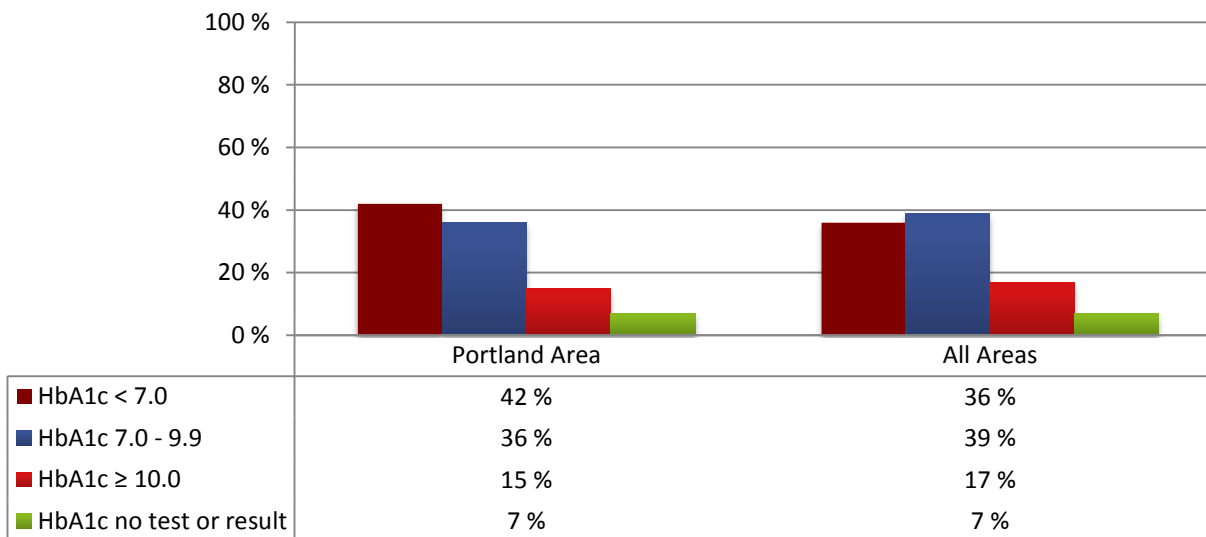
6308 sampled from 7731 active patients with diabetes (82%)

99344 sampled from 140251 active patients with diabetes (71%)

Weight (Body Mass Index)



Hemoglobin A1C



2011 Diabetes Audit: Dates of Service Jan 1 - Dec 31, 2011

This information is for the following groups:

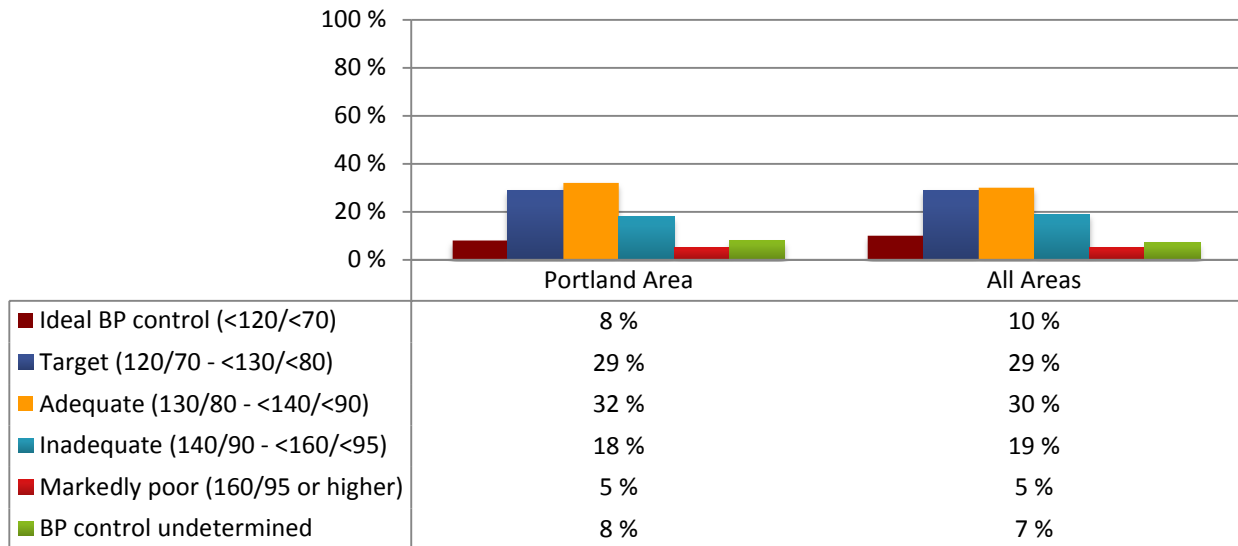
Portland Area (n=6308 patients)

All Areas (n=99344 patients)

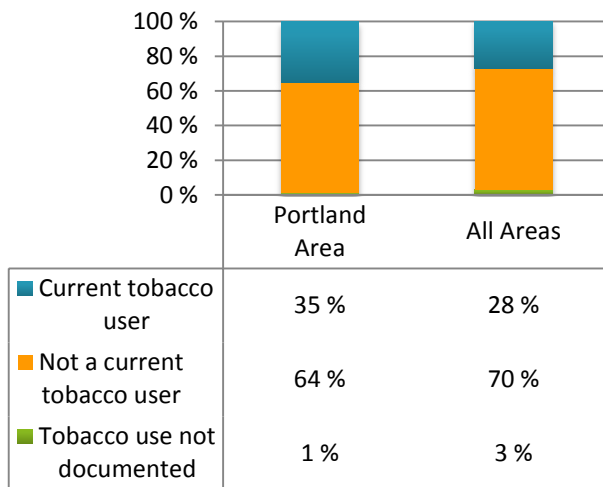
6308 sampled from 7731 active patients with diabetes (82%)

99344 sampled from 140251 active patients with diabetes (71%)

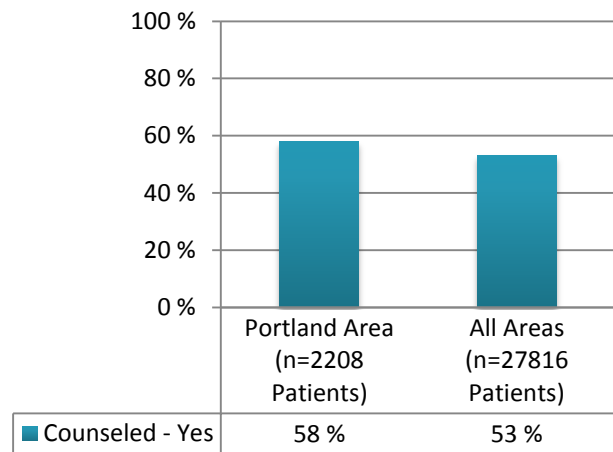
Blood Pressure



Tobacco Use



Tobacco Cessation Counseling for Current Tobacco Users



2011 Diabetes Audit: Dates of Service Jan 1 - Dec 31, 2011

This information is for the following groups:

Portland Area (n=6308 patients)

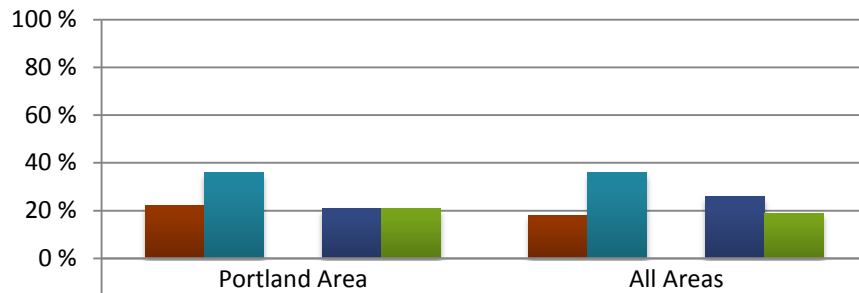
All Areas (n=99344 patients)

6308 sampled from 7731 active patients with diabetes (82%)

99344 sampled from 140251 active patients with diabetes (71%)

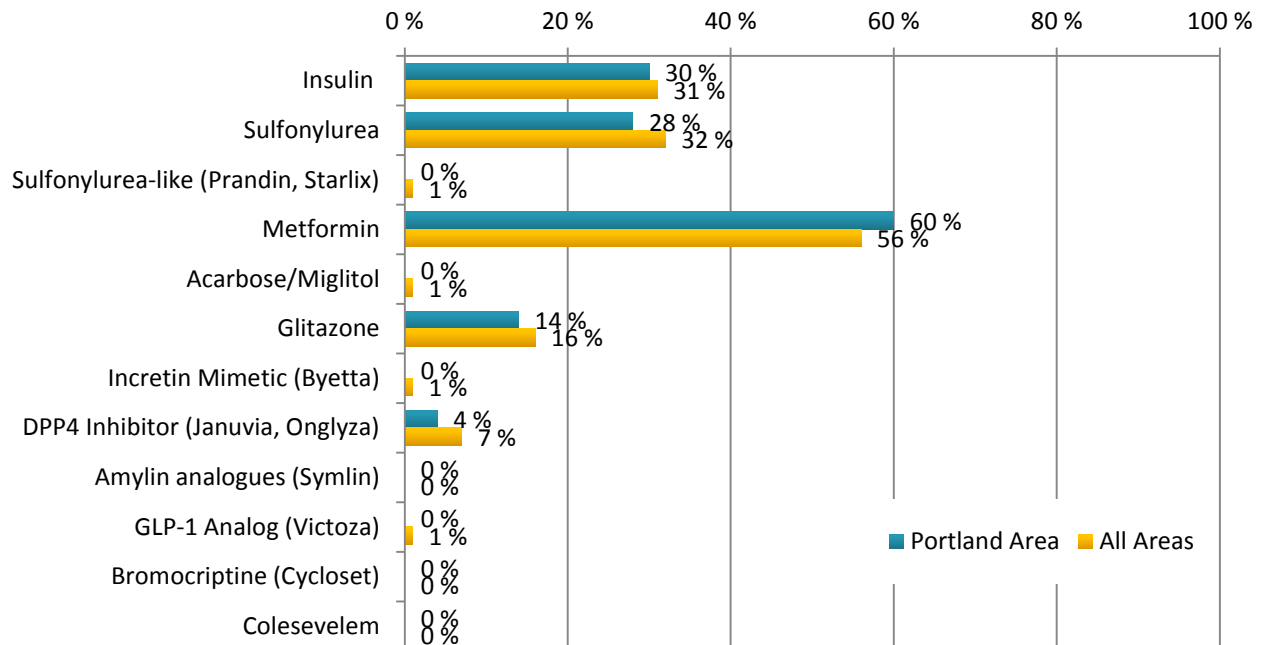
Patients with Diabetes-Related Prescriptions

Note that if no documentation of a prescription is found in the patient's chart, that individual falls under "Diet and Exercise Alone."



Diet and exercise alone	22 %	18 %
Any one oral medication	36 %	36 %
Combination of oral meds	0 %	0 %
Combination of oral meds + insulin	21 %	26 %
Refused or undetermined	21 %	19 %

Diabetes Medications, Alone or in Combination



2011 Diabetes Audit: Dates of Service Jan 1 - Dec 31, 2011

This information is for the following groups:

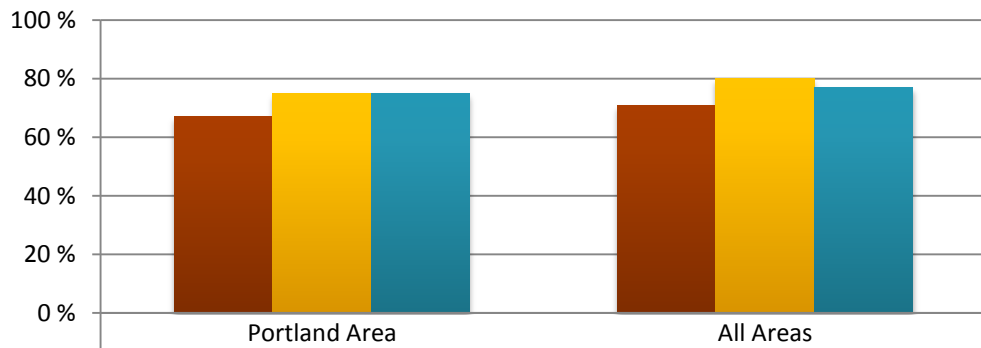
Portland Area (n=6308 patients)

All Areas (n=99344 patients)

6308 sampled from 7731 active patients with diabetes (82%)

99344 sampled from 140251 active patients with diabetes (71%)

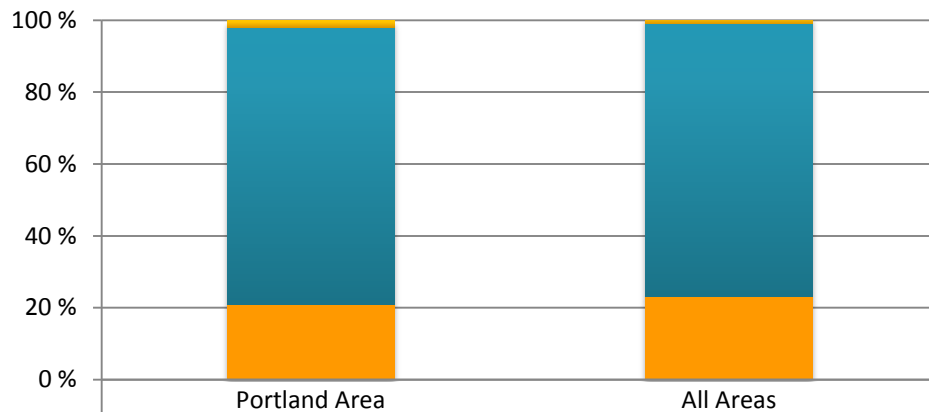
Ace Inhibitor (or ARB) Prescriptions



■ ACE or ARB Rx [overall]	67 %	71 %
■ As a % of pts with known hypertension	75 %	80 %
■ As a % of pts with elevated albuminuria	75 %	77 %

Anti-Platelet Therapy

Among Patients
>50 years of age
(males) or >60
years of age



■ Refused or Adverse Reaction	2 %	2 %
■ Aspirin/Antiplatelet Prescription	77 %	76 %
■ None	21 %	23 %

2011 Diabetes Audit: Dates of Service Jan 1 - Dec 31, 2011

This information is for the following groups:

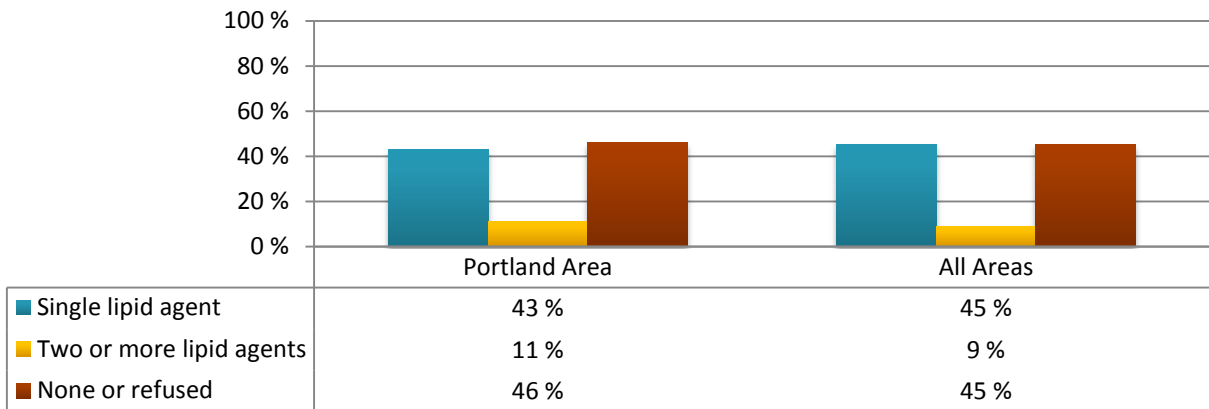
Portland Area (n=6308 patients)

All Areas (n=99344 patients)

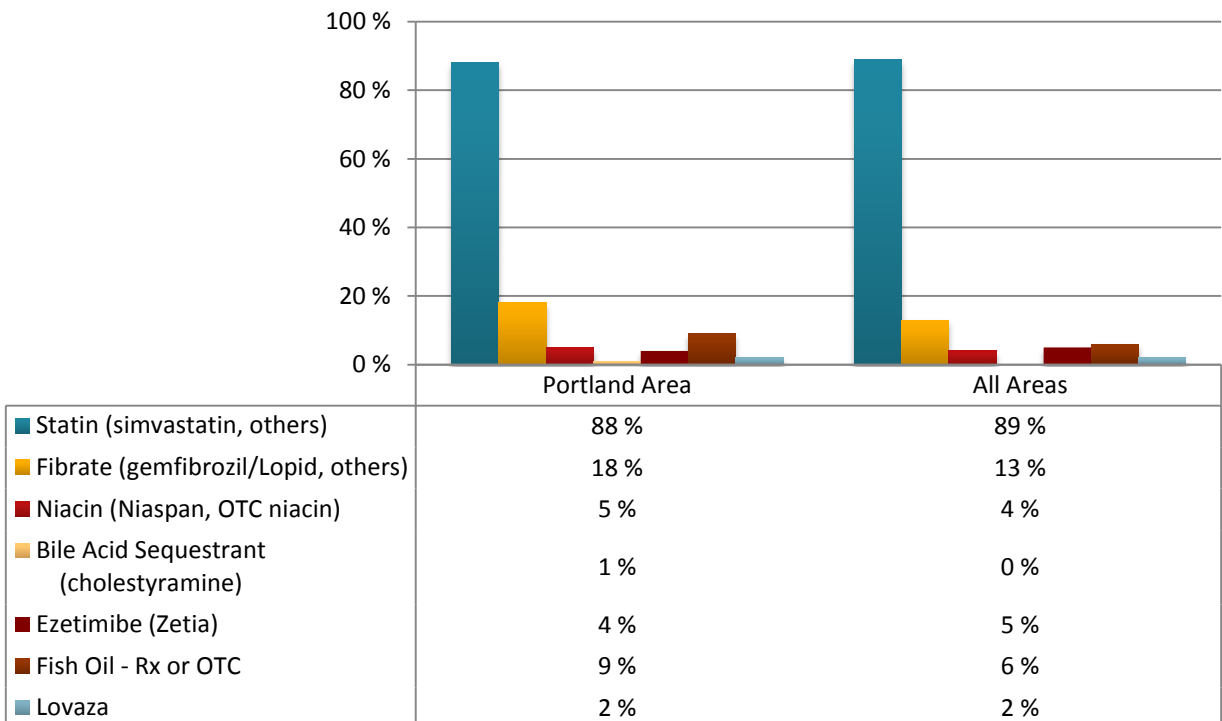
6308 sampled from 7731 active patients with diabetes (82%)

99344 sampled from 140251 active patients with diabetes (71%)

Lipid Lowering Agent Prescribed



Type of Lipid-Lowering Agent Prescribed



2011 Diabetes Audit: Dates of Service Jan 1 - Dec 31, 2011

This information is for the following groups:

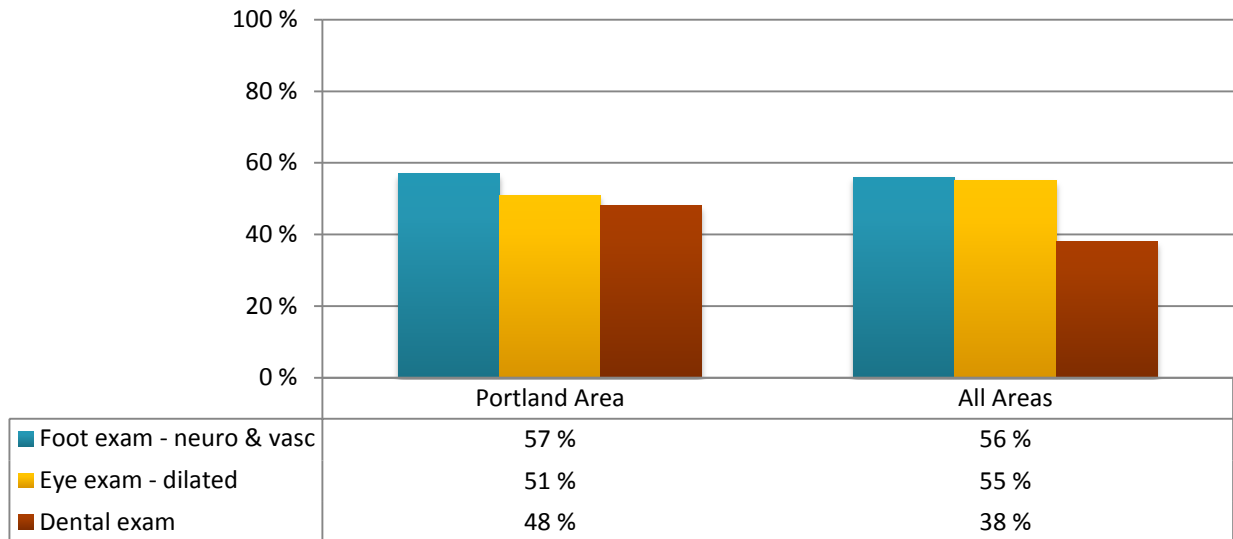
Portland Area (n=6308 patients)

All Areas (n=99344 patients)

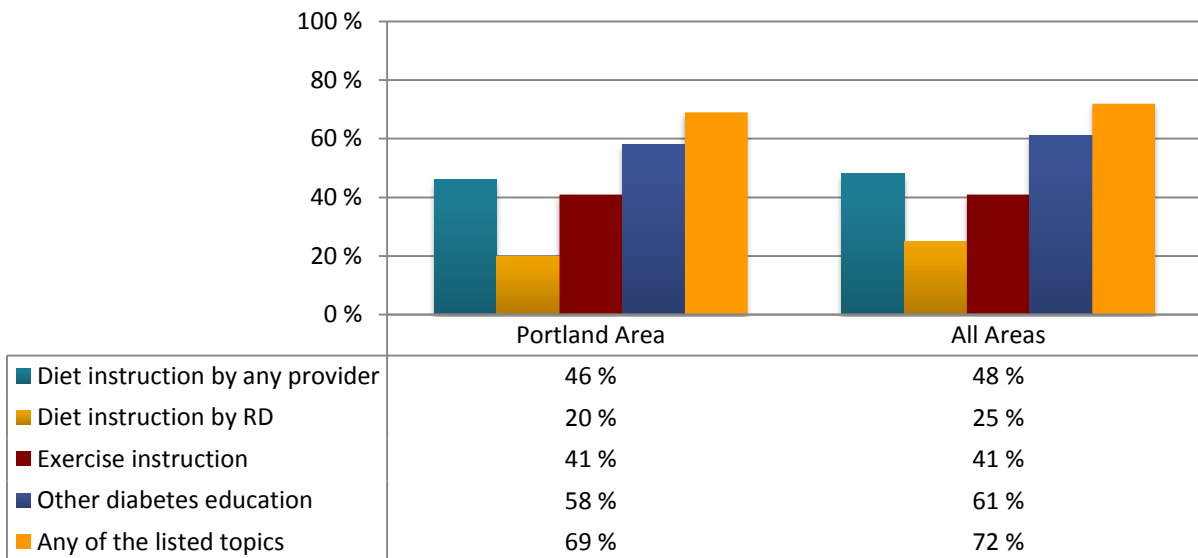
6308 sampled from 7731 active patients with diabetes (82%)

99344 sampled from 140251 active patients with diabetes (71%)

Yearly Exams



Yearly Diabetes Education



2011 Diabetes Audit: Dates of Service Jan 1 - Dec 31, 2011

This information is for the following groups:

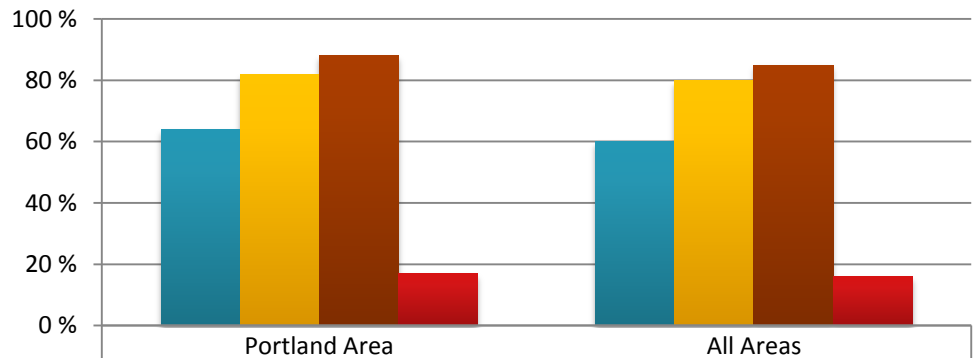
Portland Area (n=6308 patients)

All Areas (n=99344 patients)

6308 sampled from 7731 active patients with diabetes (82%)

99344 sampled from 140251 active patients with diabetes (71%)

Immunizations



■ Flu Vaccine - yearly	64 %	60 %
■ Pneumovax - once	82 %	80 %
■ Tetanus/Diphtheria (q 10 yrs)	88 %	85 %
■ Hepatitis B series ever	17 %	16 %

Portland Area

Flu Vaccine refused: 9%
 Pneumovax refused: 4%
 Tetanus/Diphtheria refused: 3%
 Hepatitis B series ever: 17%

All Areas

Flu Vaccine refused: 8%
 Pneumovax refused: 3%
 Tetanus/Diphtheria refused: 2%
 Hepatitis B series ever: 16%

Depression Identified as Active Diagnosis



■ No	71 %	79 %
■ Yes	29 %	21 %

2011 Diabetes Audit: Dates of Service Jan 1 - Dec 31, 2011

This information is for the following groups:

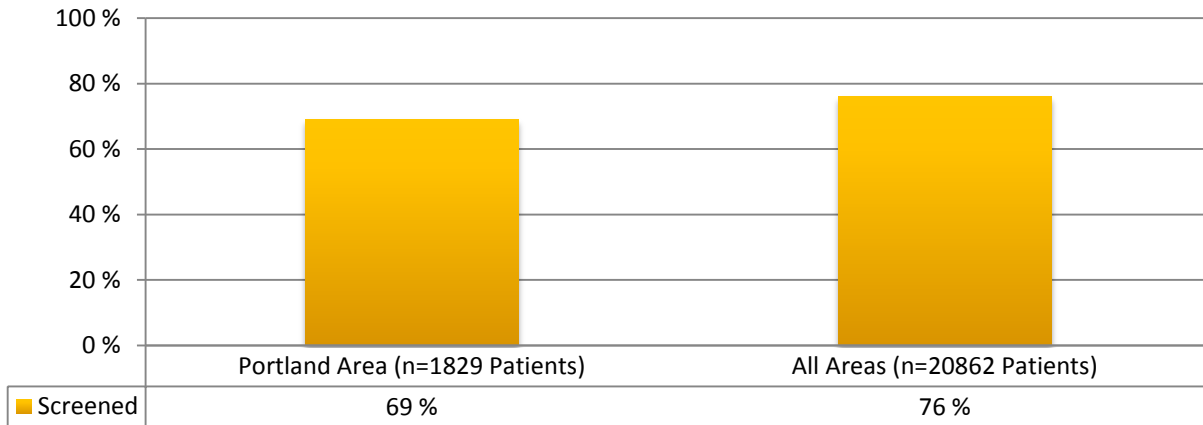
Portland Area (n=6308 patients)

All Areas (n=99344 patients)

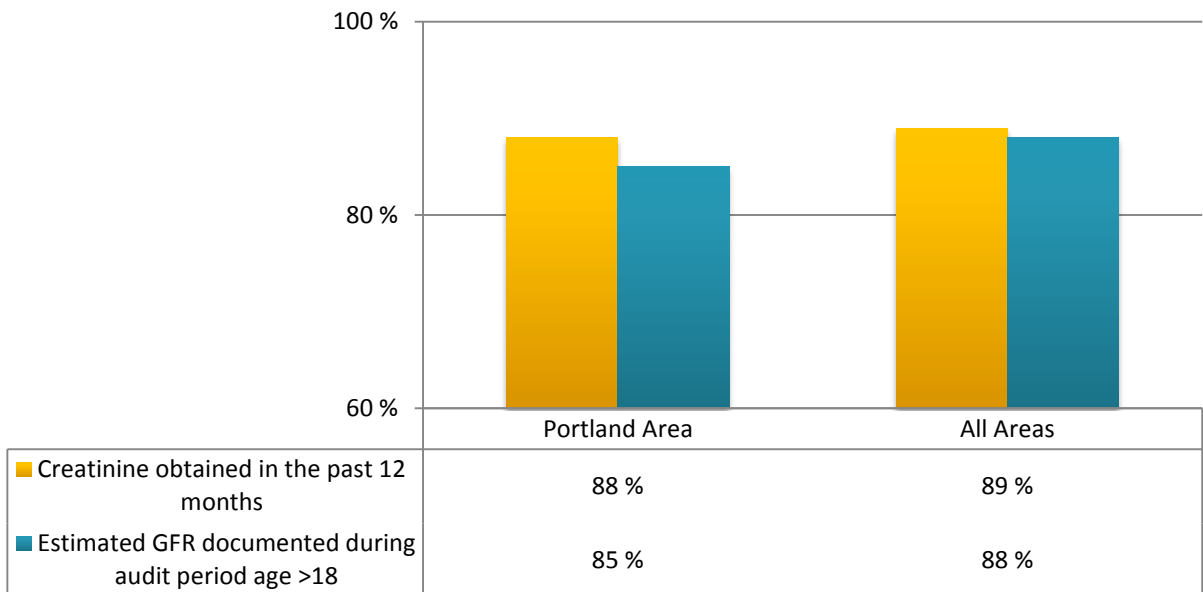
6308 sampled from 7731 active patients with diabetes (82%)

99344 sampled from 140251 active patients with diabetes (71%)

Of Patients Without Active Depression Diagnosis, Proportion Screened for Depression in Past Year



Creatinine and Estimated GFR Testing



2011 Diabetes Audit: Dates of Service Jan 1 - Dec 31, 2011

This information is for the following groups:

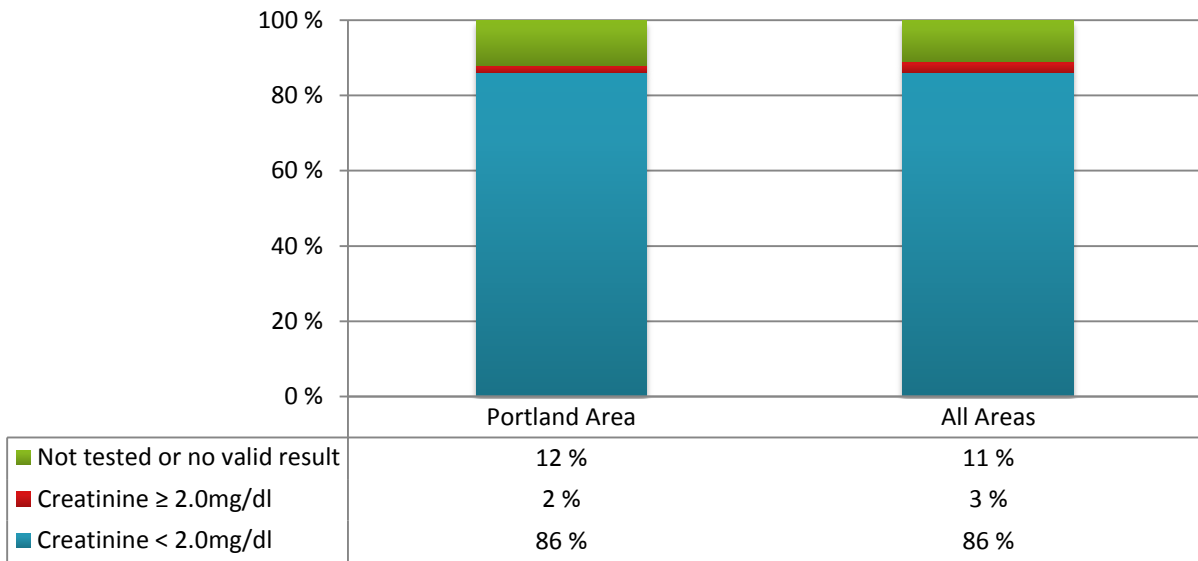
Portland Area (n=6308 patients)

All Areas (n=99344 patients)

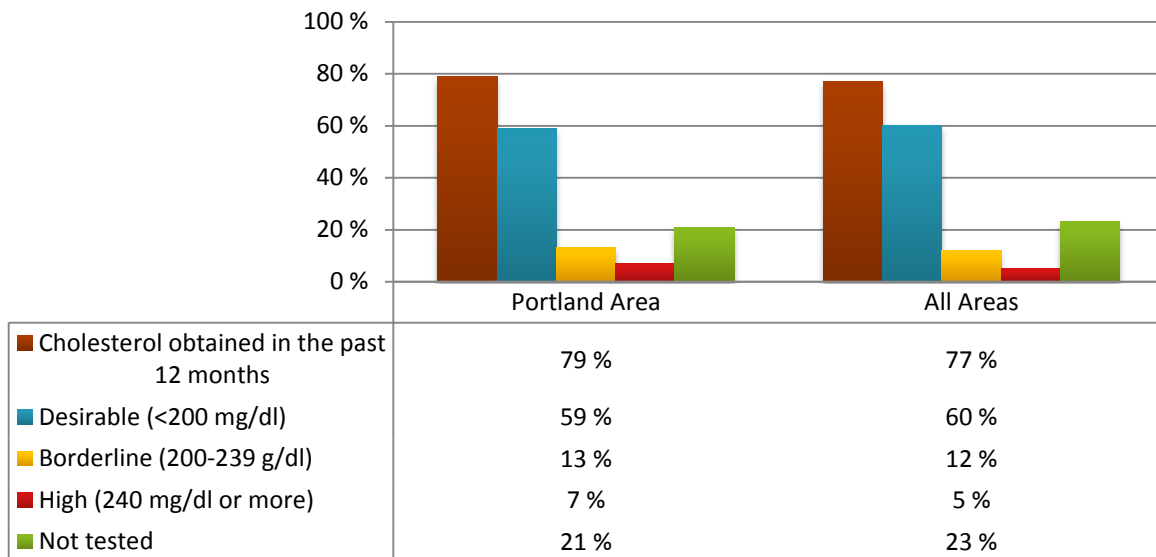
6308 sampled from 7731 active patients with diabetes (82%)

99344 sampled from 140251 active patients with diabetes (71%)

Creatinine Findings



Total Cholesterol



2011 Diabetes Audit: Dates of Service Jan 1 - Dec 31, 2011

This information is for the following groups:

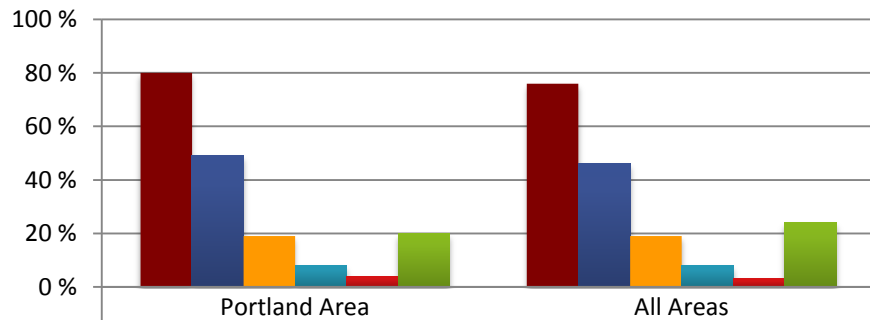
Portland Area (n=6308 patients)

All Areas (n=99344 patients)

6308 sampled from 7731 active patients with diabetes (82%)

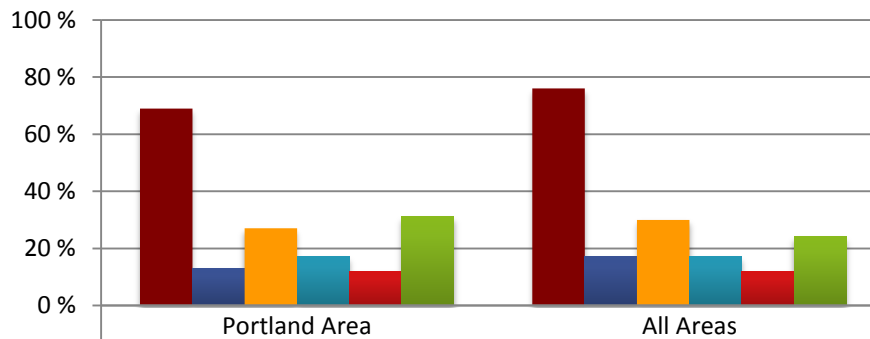
99344 sampled from 140251 active patients with diabetes (71%)

LDL Cholesterol



■ LDL obtained in the past 12 months	80 %	76 %
■ LDL <100 mg/dl	49 %	46 %
■ LDL 100-129 mg/dl	19 %	19 %
■ LDL 130-160 mg/dl	8 %	8 %
■ LDL >160	4 %	3 %
■ Not tested	20 %	24 %

HDL Cholesterol



■ HDL obtained in the past 12 months	69 %	76 %
■ HDL <35 mg/dl	13 %	17 %
■ HDL 35-45 mg/dl	27 %	30 %
■ HDL 46-55 mg/dl	17 %	17 %
■ HDL >55	12 %	12 %
■ Not tested	31 %	24 %

2011 Diabetes Audit: Dates of Service Jan 1 - Dec 31, 2011

This information is for the following groups:

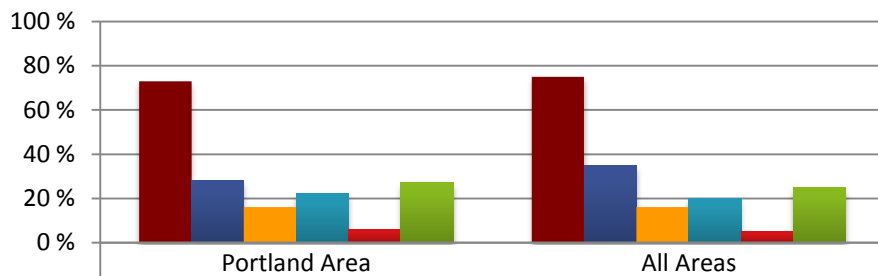
Portland Area (n=6308 patients)

All Areas (n=99344 patients)

6308 sampled from 7731 active patients with diabetes (82%)

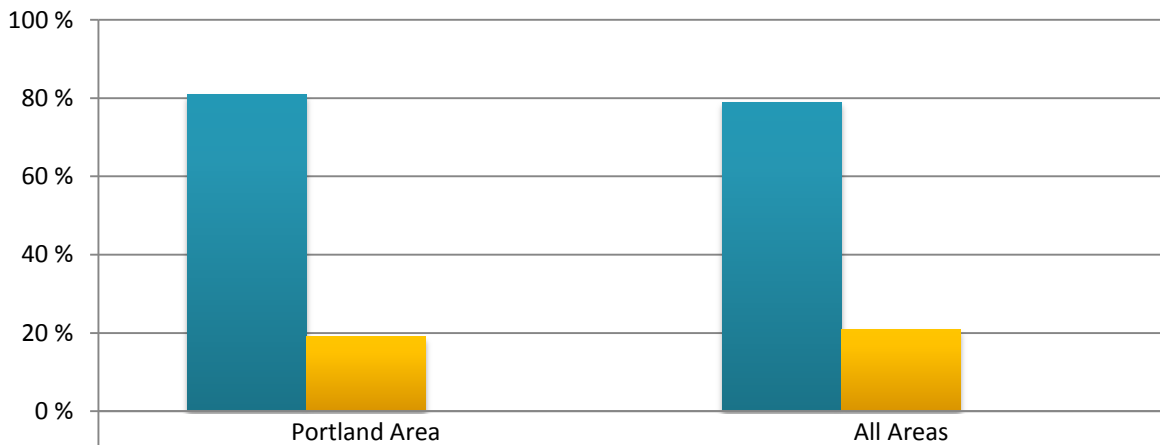
99344 sampled from 140251 active patients with diabetes (71%)

Triglyceride Distribution



■ Triglycerides obtained in the past 12 months	73 %	75 %
■ TG <150 mg/dl	28 %	35 %
■ TG 150-199 mg/dl	16 %	16 %
■ TG 200-400 mg/dl	22 %	20 %
■ TG >400 mg/dl	6 %	5 %
■ Not tested	27 %	25 %

Urinalysis Performed



■ Yes	81 %	79 %
■ No	19 %	21 %
■ Refused	0 %	0 %

2011 Diabetes Audit: Dates of Service Jan 1 - Dec 31, 2011

This information is for the following groups:

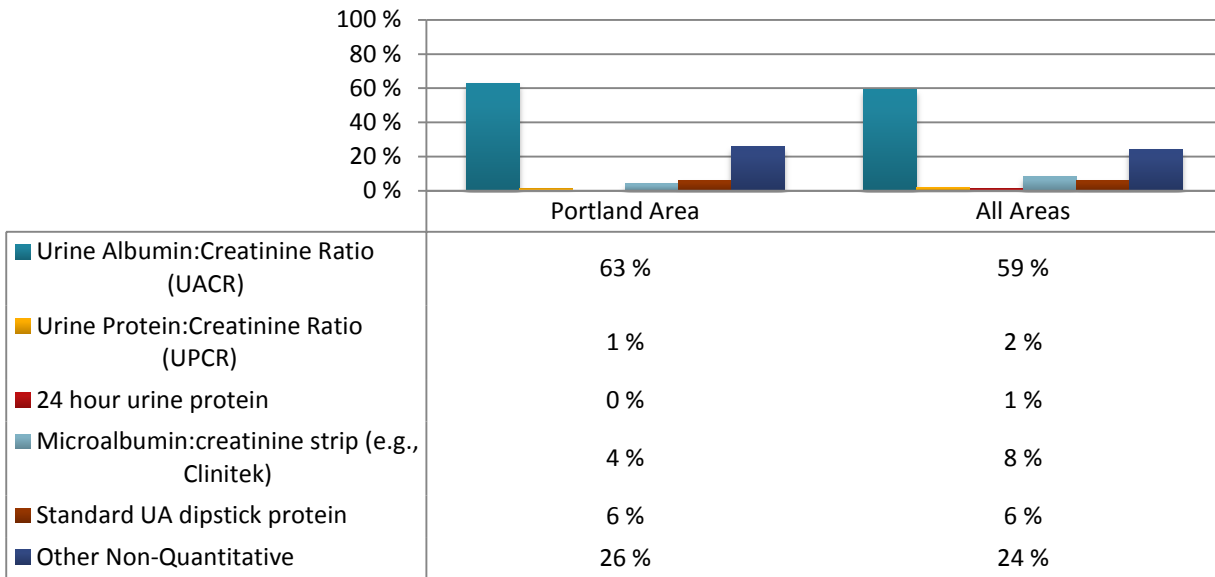
Portland Area (n=6308 patients)

All Areas (n=99344 patients)

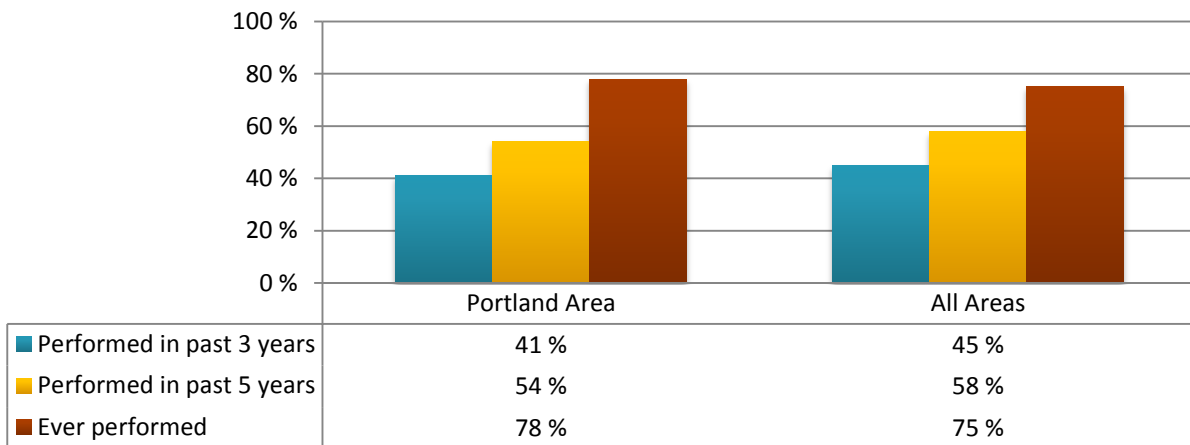
6308 sampled from 7731 active patients with diabetes (82%)

99344 sampled from 140251 active patients with diabetes (71%)

Type of Urine Protein Testing



EKG Status



2011 Diabetes Audit: Dates of Service Jan 1 - Dec 31, 2011

This information is for the following groups:

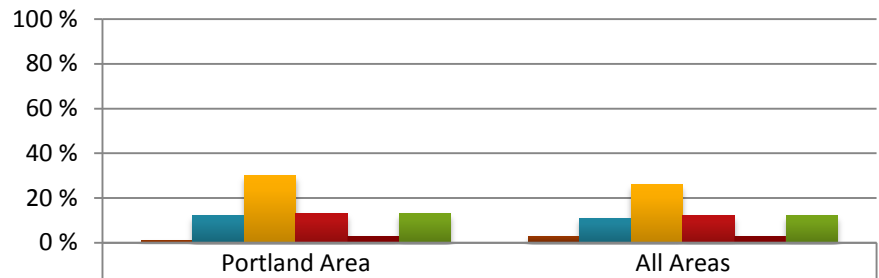
Portland Area (n=6308 patients)

All Areas (n=99344 patients)

6308 sampled from 7731 active patients with diabetes (82%)

99344 sampled from 140251 active patients with diabetes (71%)

Tuberculosis Status



	Portland Area	All Areas
■ TB test +, INH treatment complete	1 %	3 %
■ TB test +, untreated/ incomplete or tx unknown	12 %	11 %
■ TB test -, placed after DM diagnosis	30 %	26 %
■ TB test -, placed before DM diagnosis	13 %	12 %
■ TB test -, date of dx or test date unknown	3 %	3 %
■ TB test status unknown	13 %	12 %