

Section 1: Trends

- 1 Patients in the Diabetes Register
- 2 Gender of Patients with Diabetes
- 2 Age of Patients with Diabetes
- 3 Diabetes Type
- 3 Duration of Diabetes
- 4 Weight Control
- 5 Hemoglobin A1c
- 6 Blood Pressure
- 7 Tobacco Use & Tobacco Cessation
- 8 Diabetes Medications
- 9 ACE Inhibitor or ARB Prescriptions
- 9 Antiplatelet Therapy
- 10 Annual Examinations (Foot, Eye, Dental)
- 10 Diabetes-Related Education
- 11 Immunizations
- 11 Diagnosed Depression
- 12 Depression Screening
- 12 Hypertension, Elevated Creatinine
- 13 Renal Function Testing (Urinalysis, Creatinine, eGFR)
- 14 Cholesterol
- 15 LDL Cholesterol
- 16 HDL Cholesterol
- 17 Triglycerides
- 18 EKG among Patients 30 and Older
- 18 Tuberculosis or PPD History

Section 2: Comparisons to Overall Portland Area Results for 2011

- 19 Number of Patients in the 2011 Diabetes Audit
- 20 Gender, Age of Patients with Diabetes
- 21 Type, Duration of Diabetes
- 22 Weight (Body Mass Index)
- 22 Hemoglobin A1c
- 23 Blood Pressure
- 23 Tobacco Use & Tobacco Counseling
- 24 Diabetes-Related Prescriptions
- 25 ACE Inhibitor (or ARB) Use; Anti-Platelet Therapy
- 26 Lipid-Lowering Agents
- 27 Yearly Exams
- 27 Yearly Diabetes Education
- 28 Immunizations
- 28 Depression as Active Diagnosis
- 29 Screening for Depression
- 29 Creatinine and Estimated GFR Testing
- 30 Creatinine Findings; Total Cholesterol
- 31 LDL Cholesterol; HDL Cholesterol
- 32 Triglycerides; Urinalysis Performed
- 33 Type of Urine Protein Testing; EKG Status
- 34 Tuberculosis Status

Diabetes Audit Results, Portland Area, 2004-2011

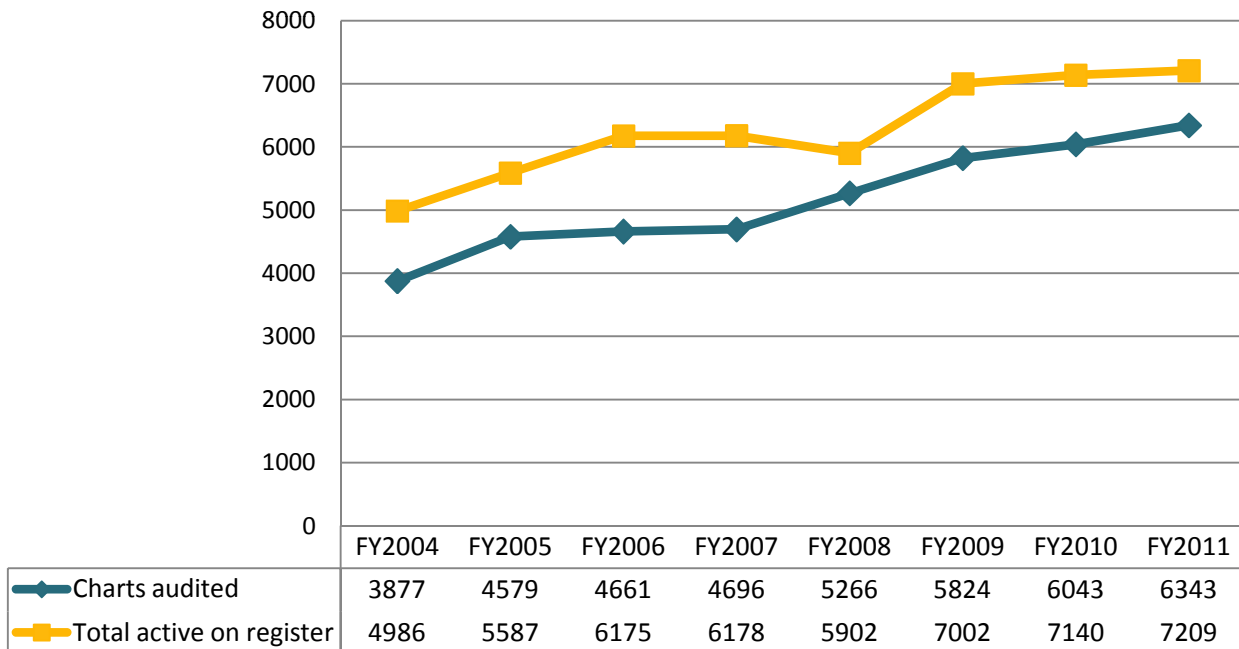
Site-Specific Trends

The following report contains information from your program's annual diabetes audit submission to the Indian Health Service over the past few years. The report was prepared for your site by the Western Tribal Diabetes Project at the Northwest Portland Area Indian Health Board, which receives Special Diabetes Program for Indians (SDPI) funding to assist Northwest tribes in managing their diabetes information. If you have any questions about the report, or if you would like this report in Excel format, please contact the Western Tribal Diabetes Project at wtdp@npaihb.org or (800) 862-5497.

Notes:

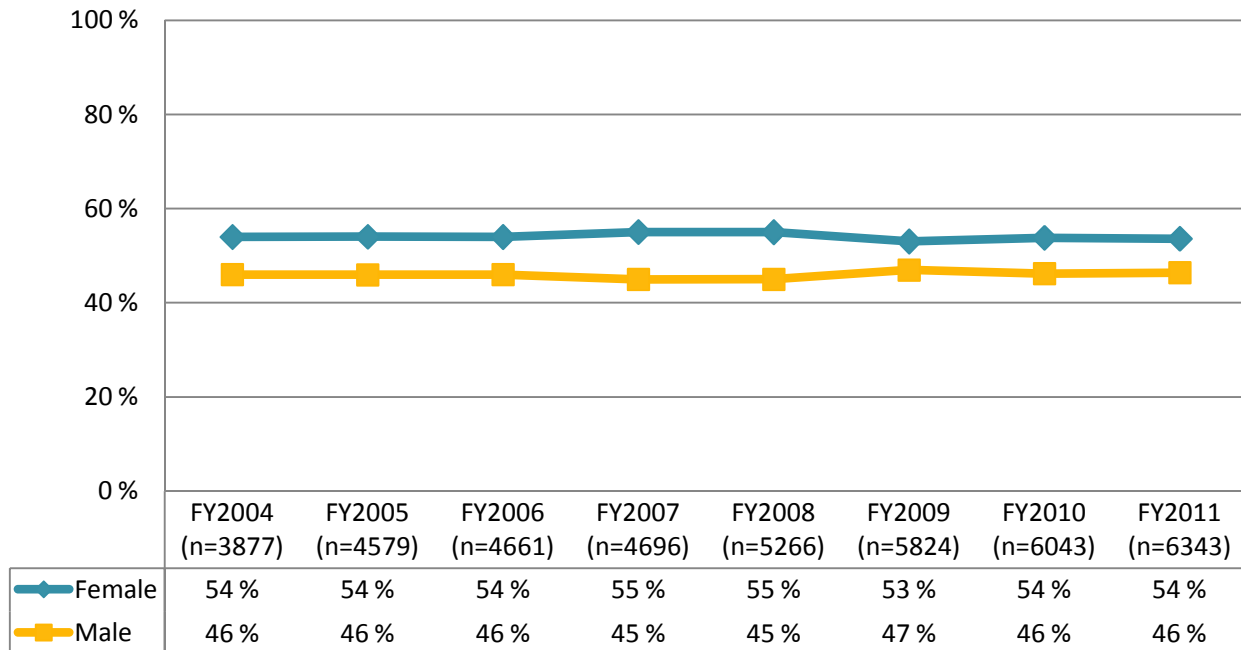
- Due to rounding, charts will occasionally not add up to 100%.
- Data are presented by the year in which the data were submitted. Most likely, the patient care reflected in the audit was delivered in the previous year. For example, the columns for Fiscal Year (FY) 2008 in these charts reflect care that was delivered in 2007.
- Blank spaces have been left for some indicators in years when information was not reported.

Patients in the Diabetes Register

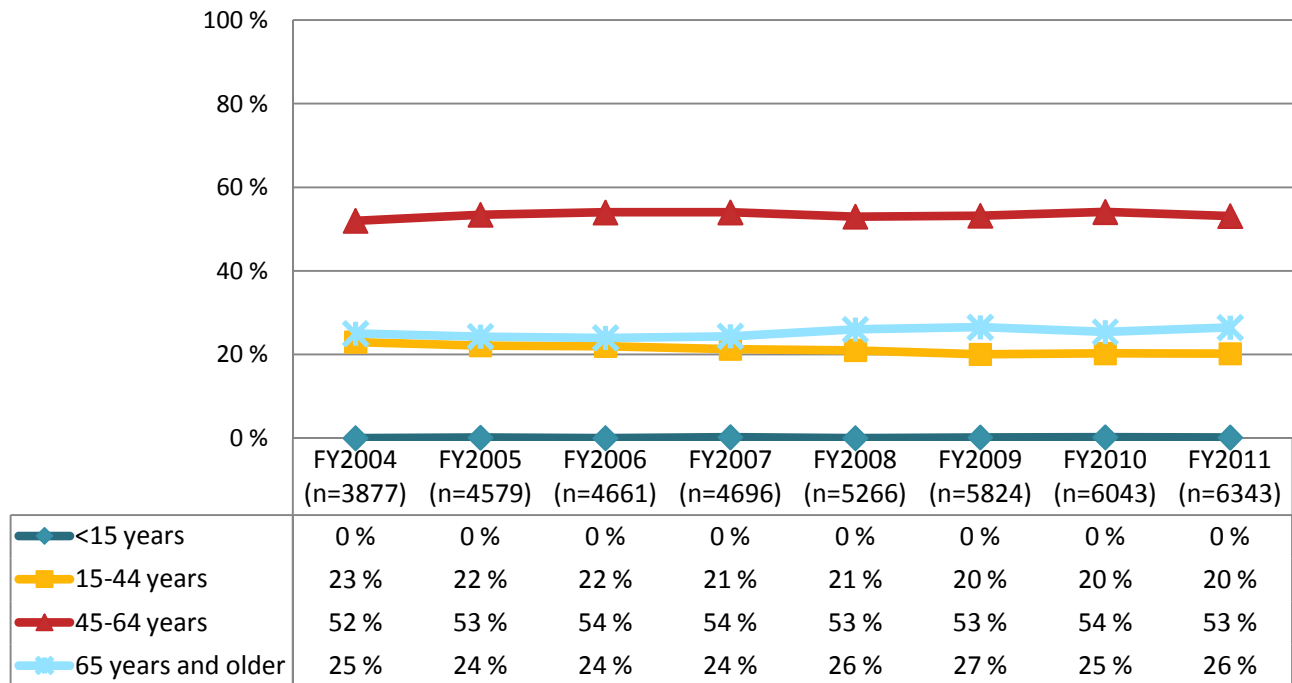


Diabetes Audit Results, Portland Area, 2004-2011

Gender of Patients with Diabetes

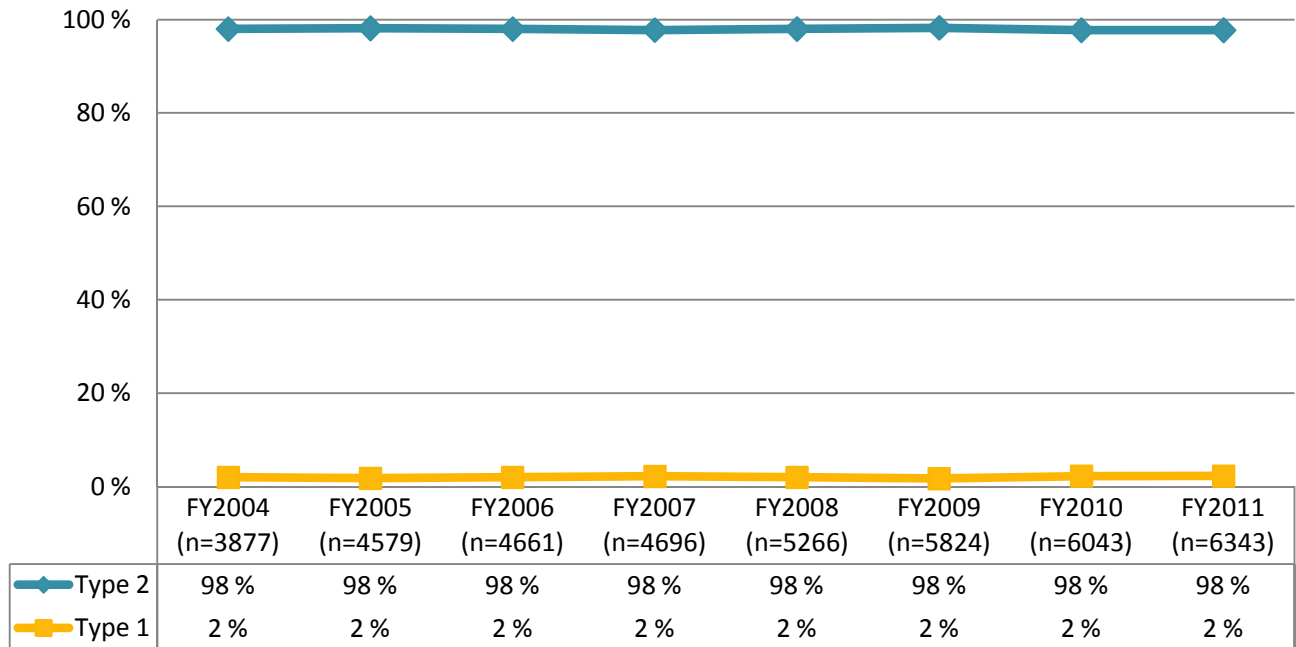


Age of Patients with Diabetes

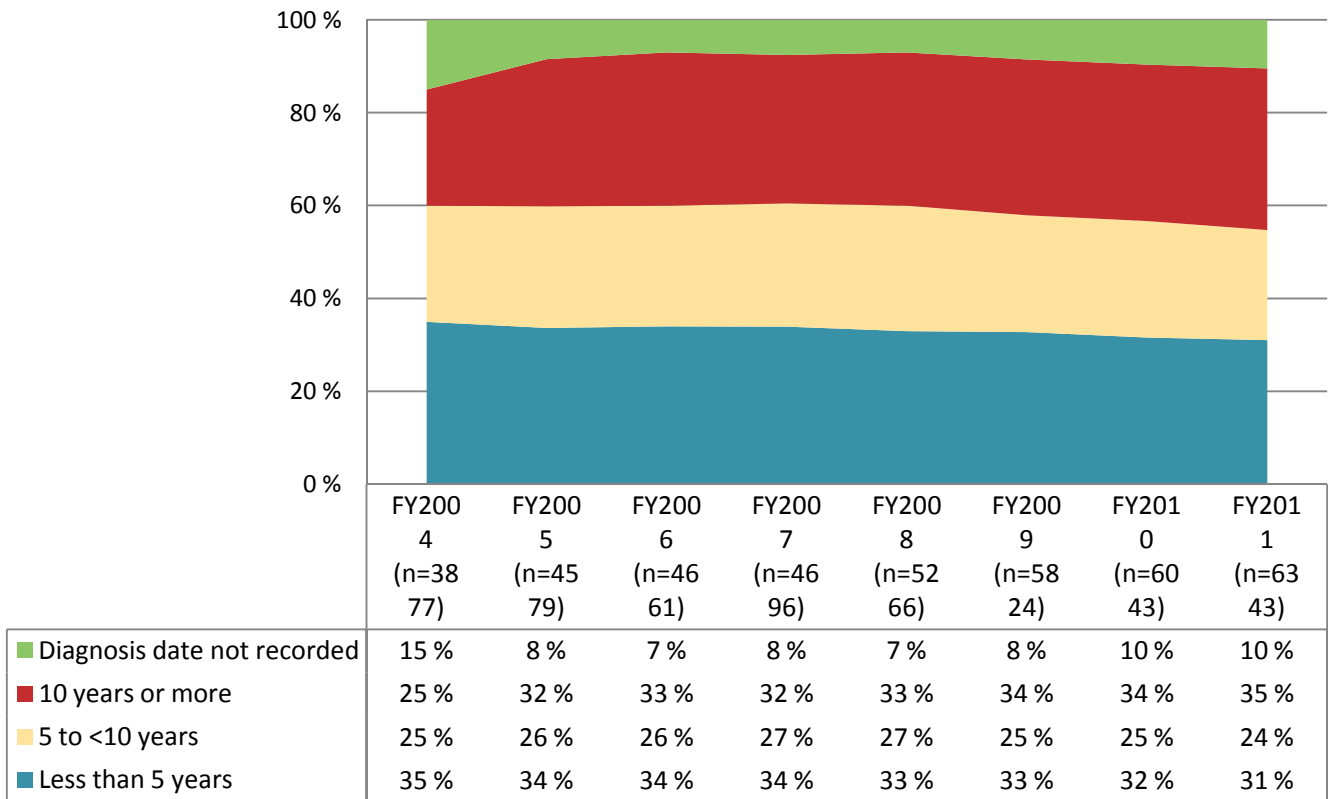


Diabetes Audit Results, Portland Area, 2004-2011

Diabetes Type



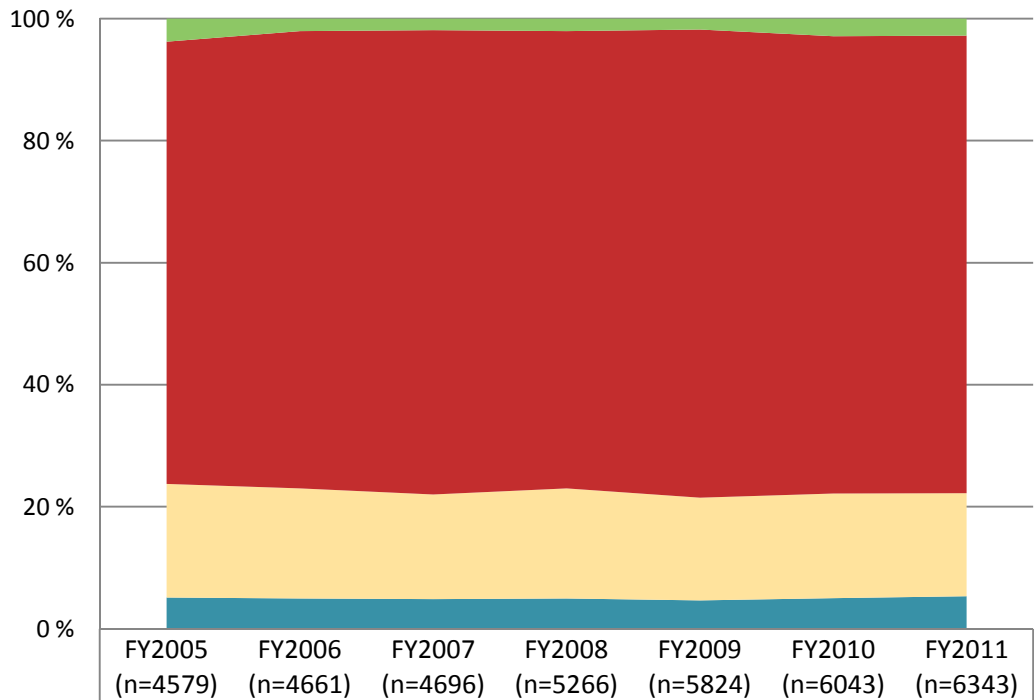
Duration of Diabetes



A blank indicates a category not reported on in a given year; FY = Fiscal Year, the year in which data were submitted.

Diabetes Audit Results, Portland Area, 2004-2011

Weight Control



| | | | | | | | |
|---------------------------------------|------|------|------|------|------|------|------|
| Height or weight missing | 4 % | 2 % | 2 % | 2 % | 2 % | 3 % | 3 % |
| Obese (BMI 30.0 or above) | 72 % | 75 % | 76 % | 75 % | 77 % | 75 % | 75 % |
| Overweight (BMI 25.0-25.9) | 19 % | 18 % | 17 % | 18 % | 17 % | 17 % | 17 % |
| Normal (BMI < 25.0) | 5 % | 5 % | 5 % | 5 % | 5 % | 5 % | 5 % |
| Overweight or obese (BMI 25 or above) | 91 % | 93 % | 93 % | 93 % | 94 % | 92 % | 92 % |

Notes

Body Mass Index (BMI) is calculated using the last weight in the audit year recorded on a non-prenatal visit, along with the most recent height measured since the patient's 19th birthday. The formula is

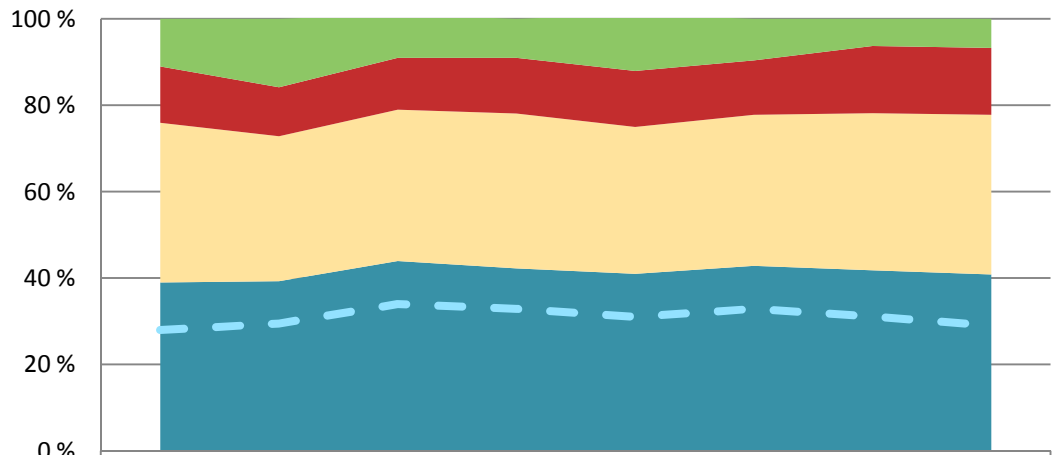
$$\text{BMI} = \text{weight (lbs)} \div \text{height (inches)} \div \text{height (inches)} \times 703$$

Before 2005, overweight and obesity were reported from the audit using cutoffs from the National Health and Nutrition Examination Survey (NHANES). Women were considered overweight with a BMI of 27.3 or higher and obese with BMI 32.3 or higher. Men were overweight at a BMI of 27.8 and obese at 31.1 or higher. These results are still calculated from audit data but are not presented here for the sake of clarity in the chart.

The bars in the graph reflect current cutoffs, which are the same for men and women. Overweight is defined as a BMI of 25 or higher and obesity is 30 or higher. Using these standards, more patients are considered overweight than with the older standards.

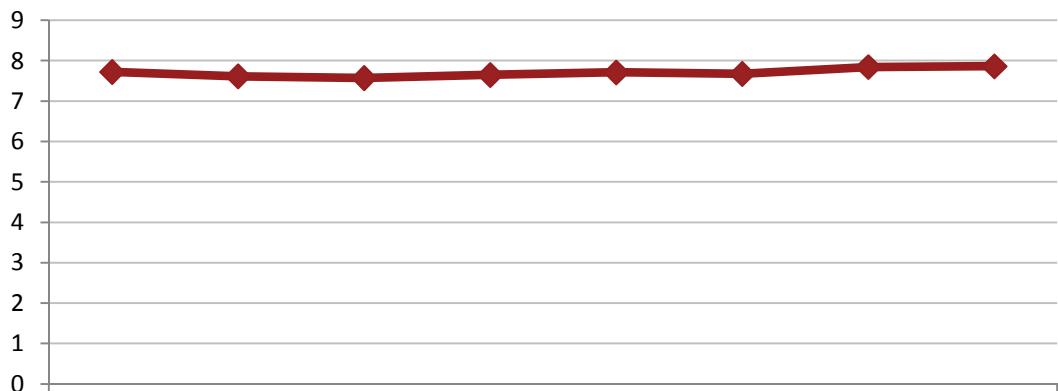
Diabetes Audit Results, Portland Area, 2004-2011

Hemoglobin A1c



| | FY2004 (n=3877) | FY2005 (n=4579) | FY2006 (n=4661) | FY2007 (n=4696) | FY2008 (n=5266) | FY2009 (n=5824) | FY2010 (n=6043) | FY2011 (n=6343) |
|----------------------|--------------------|--------------------|--------------------|--------------------|--------------------|--------------------|--------------------|--------------------|
| HbA1c missing | 11 % | 16 % | 10 % | 9 % | 13 % | 10 % | 6 % | 7 % |
| HbA1c 10.0 or higher | 13 % | 11 % | 12 % | 13 % | 13 % | 13 % | 16 % | 15 % |
| HbA1c 7.0-9.9 | 37 % | 34 % | 35 % | 36 % | 34 % | 35 % | 36 % | 37 % |
| HbA1c <7 | 39 % | 39 % | 44 % | 42 % | 41 % | 43 % | 42 % | 41 % |
| HbA1c ≤6.5 | 28 % | 29 % | 34 % | 33 % | 31 % | 33 % | 31 % | 29 % |

Average Hemoglobin A1C



| | FY2004 (n=3358) | FY2005 (n=3758) | FY2006 (n=4159) | FY2007 (n=4262) | FY2008 (n=4601) | FY2009 (n=5259) | FY2010 (n=5660) | FY2011 (n=5934) |
|--------------------|--------------------|--------------------|--------------------|--------------------|--------------------|--------------------|--------------------|--------------------|
| Mean HbA1c | 7.720 | 7.614 | 7.570 | 7.647 | 7.710 | 7.673 | 7.843 | 7.86 |
| Standard error | 0.020 | 0.015 | 0.020 | 0.017 | 0.010 | 0.013 | 0.012 | 0.01 |
| 95% CI upper limit | 7.759 | 7.642 | 7.609 | 7.681 | 7.730 | 7.699 | 7.867 | 7.881 |
| 95% CI lower limit | 7.681 | 7.585 | 7.531 | 7.614 | 7.690 | 7.647 | 7.818 | 7.842 |

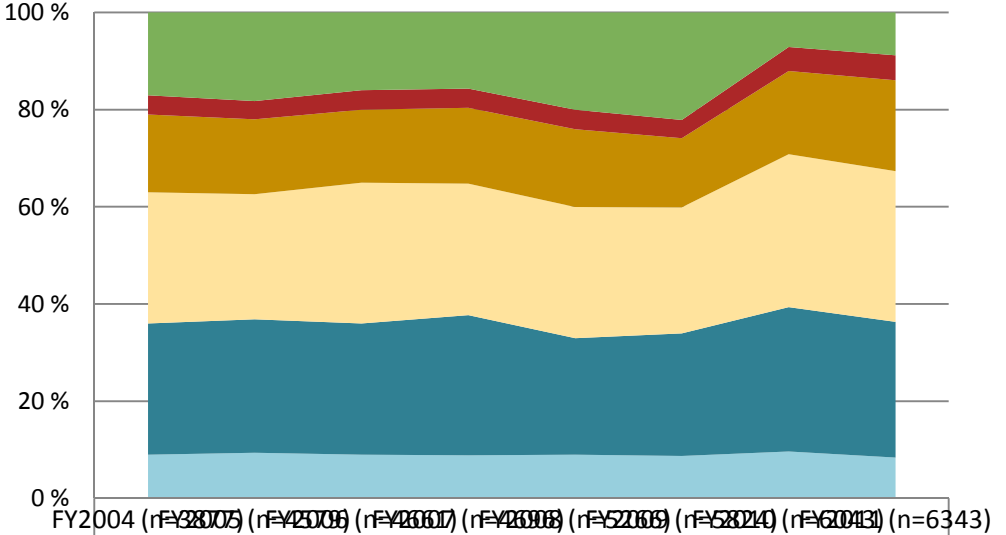
A blank indicates a category not reported on in a given year; FY = Fiscal Year, the year in which data were submitted.

Diabetes Audit Results, Portland Area, 2004-2011

Before 2010: Based on the average of the last 3 blood pressure measurements taken within the audit year. If <3 measurements were taken, blood pressure control is undetermined.

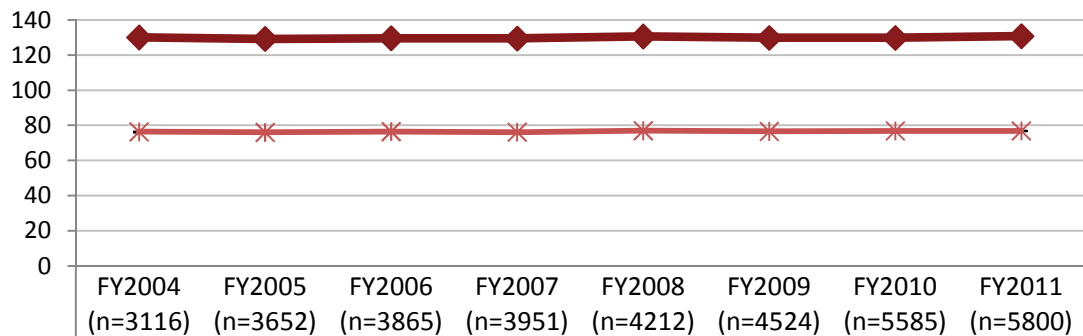
In 2010: Based on the average of the last 2 or 3 blood pressure measurements taken within the audit year. If <2 measurements were taken, blood pressure control is undetermined.

Blood Pressure



| | FY2004 (n=3116) | FY2005 (n=3652) | FY2006 (n=3865) | FY2007 (n=3951) | FY2008 (n=4212) | FY2009 (n=4524) | FY2010 (n=5585) | FY2011 (n=5800) |
|----------------------------------|-----------------|-----------------|-----------------|-----------------|-----------------|-----------------|-----------------|-----------------|
| BP control undetermined | 17 % | 18 % | 16 % | 16 % | 20 % | 22 % | 7 % | 9 % |
| Markedly poor (160/95 or higher) | 4 % | 4 % | 4 % | 4 % | 4 % | 4 % | 5 % | 5 % |
| Inadequate (140/90 - <160/<95) | 16 % | 15 % | 15 % | 16 % | 16 % | 14 % | 17 % | 19 % |
| Adequate (130/80 - <140/<90) | 27 % | 26 % | 29 % | 27 % | 27 % | 26 % | 32 % | 31 % |
| Target (120/70 - <130/<80) | 27 % | 27 % | 27 % | 29 % | 24 % | 25 % | 30 % | 28 % |
| Ideal control (<120/<70) | 9 % | 9 % | 9 % | 9 % | 9 % | 9 % | 10 % | 8 % |

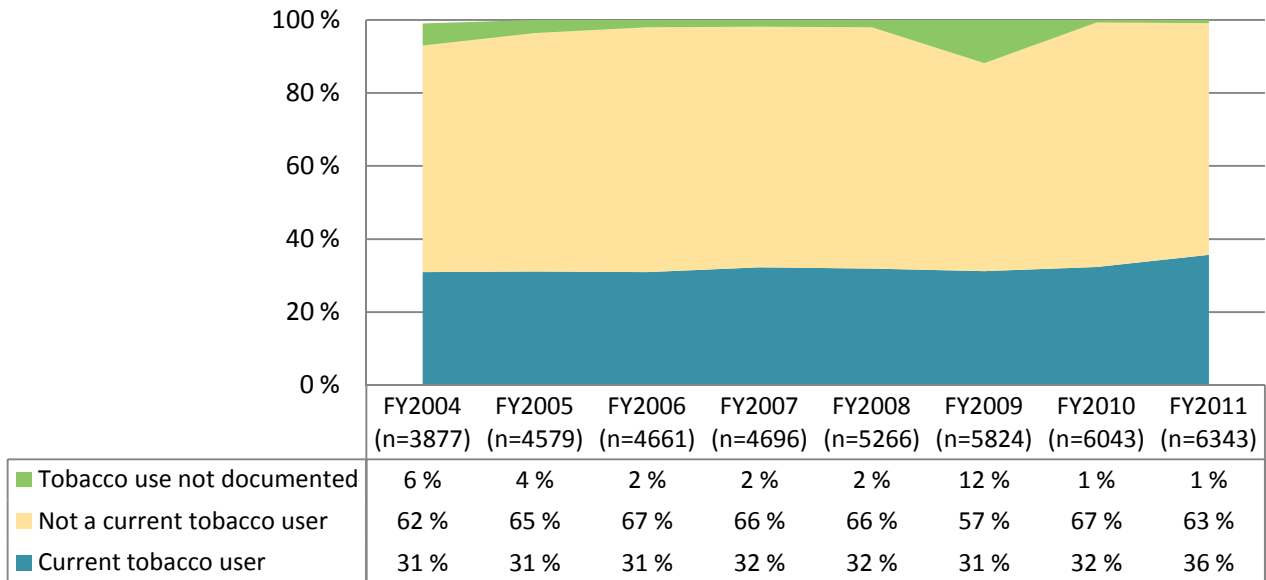
Average Blood Pressure



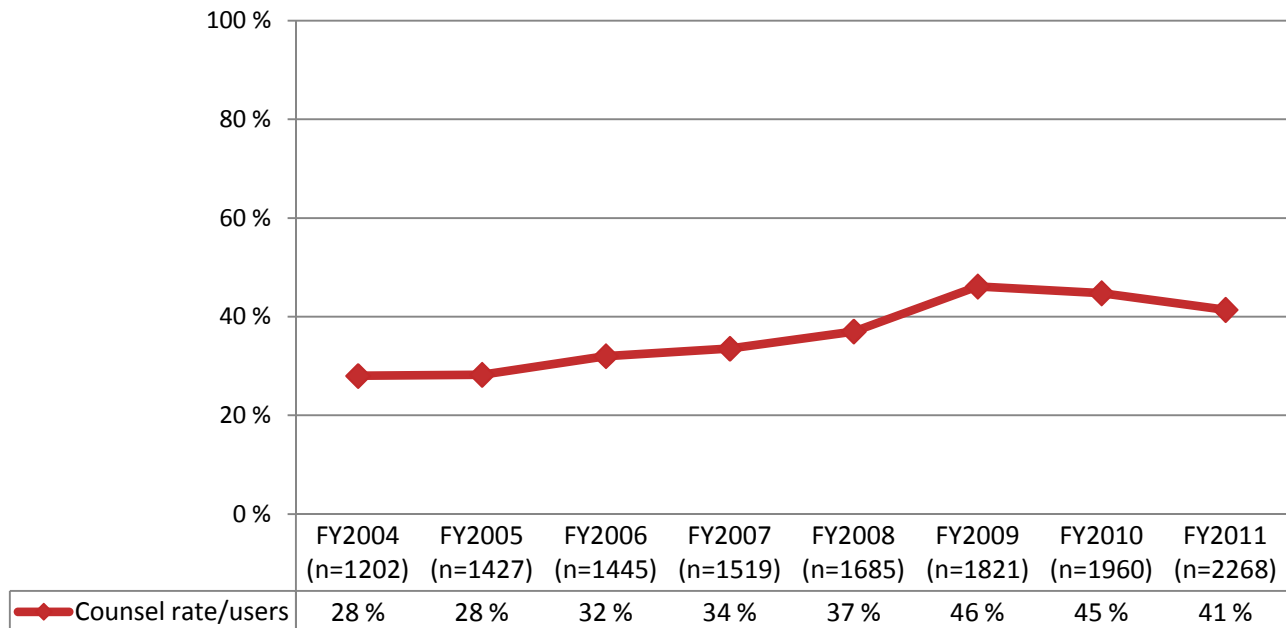
| | FY2004 (n=3116) | FY2005 (n=3652) | FY2006 (n=3865) | FY2007 (n=3951) | FY2008 (n=4212) | FY2009 (n=4524) | FY2010 (n=5585) | FY2011 (n=5800) |
|---------------------|-----------------|-----------------|-----------------|-----------------|-----------------|-----------------|-----------------|-----------------|
| ◆ Mean systolic BP | 130.040 | 129.213 | 129.570 | 129.419 | 130.590 | 129.778 | 129.798 | 130.78 |
| Standard error | 0.140 | 0.112 | 0.140 | 0.124 | 0.080 | 0.095 | 0.079 | 0.07 |
| 95% CI upper limit | 130.314 | 129.433 | 129.844 | 129.662 | 130.747 | 129.964 | 129.952 | 130.922 |
| 95% CI lower limit | 129.766 | 128.993 | 129.296 | 129.176 | 130.433 | 129.592 | 129.644 | 130.646 |
| * Mean diastolic BP | 76.330 | 76.001 | 76.460 | 76.130 | 76.980 | 76.564 | 76.868 | 76.87 |
| Standard error | 0.080 | 0.073 | 0.090 | 0.079 | 0.050 | 0.065 | 0.055 | 0.05 |
| 95% CI upper limit | 76.487 | 76.144 | 76.636 | 76.284 | 77.078 | 76.691 | 76.975 | 76.960 |
| 95% CI lower limit | 76.173 | 75.859 | 76.284 | 75.976 | 76.882 | 76.437 | 76.761 | 76.782 |

Diabetes Audit Results, Portland Area, 2004-2011

Tobacco Use



Tobacco Cessation Referrals

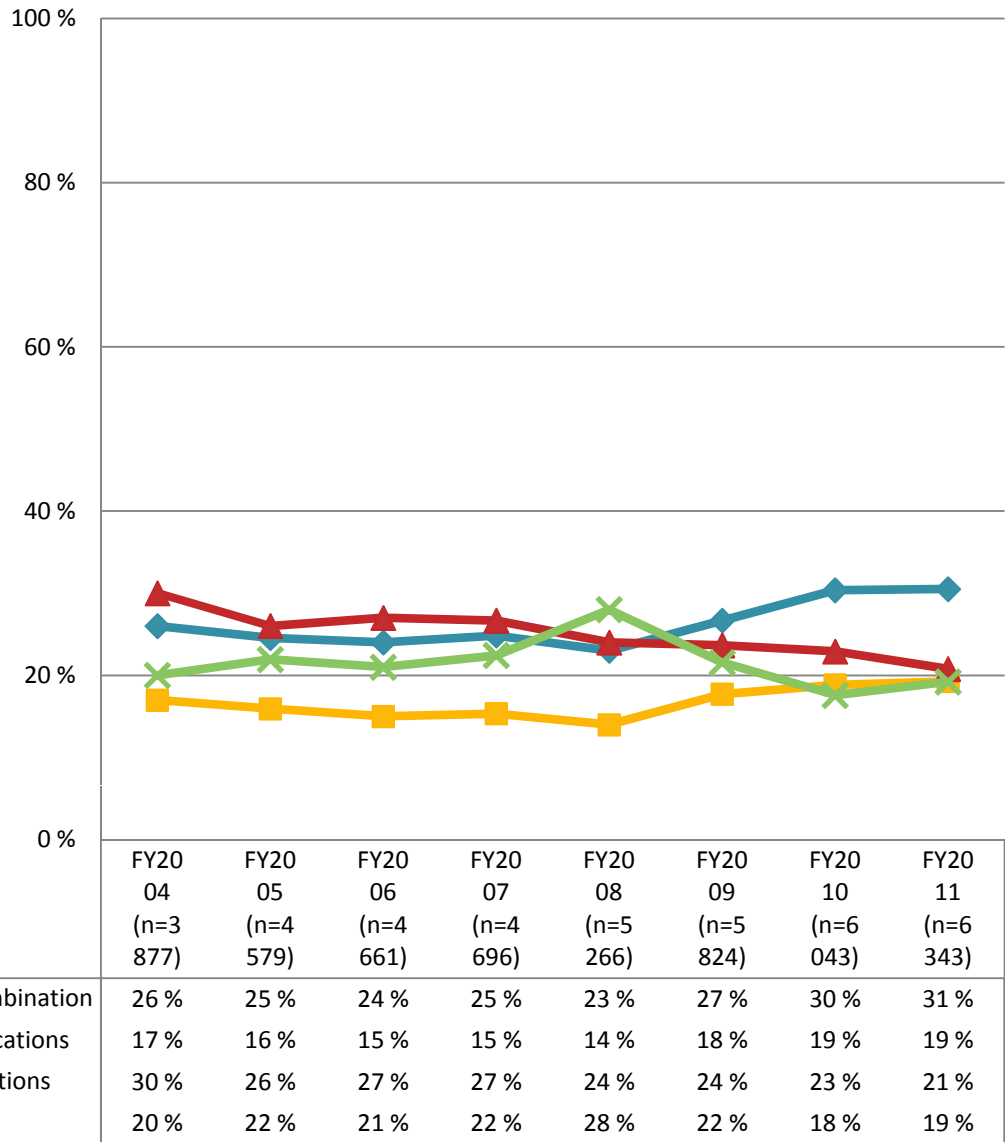


Note: The 'n' in this graph refers to the total number of tobacco users included in the audit.

A blank indicates a category not reported on in a given year; FY = Fiscal Year, the year in which data were submitted.

Diabetes Audit Results, Portland Area, 2004-2011

Diabetes Medications

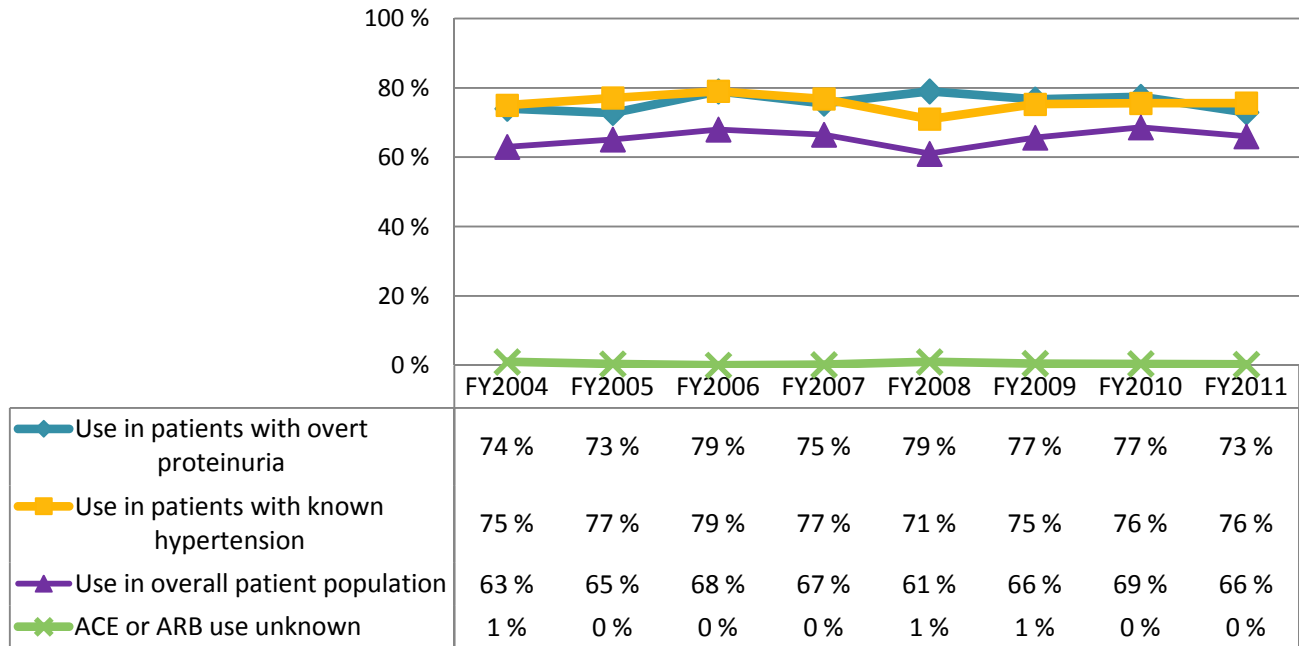


Notes

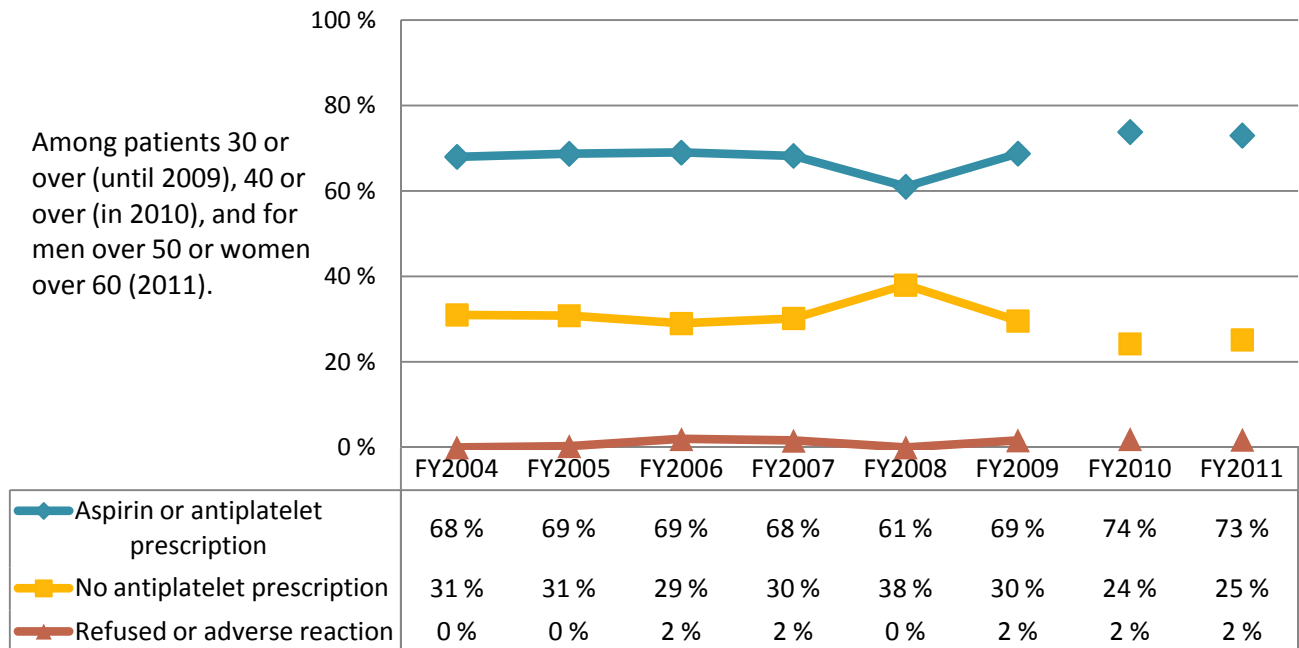
"Diet and exercise alone" is the default selection in RPMS. If no records are found in the patient's chart of medications prescribed or dispensed in the last six months of the audit year, the patient is classified as being treated with "diet and exercise alone." The percentages for this category may be inflated if patients did not refill their prescriptions at the clinic in the last six months of the audit year. You can enter medication reviews as historical RXs so that the audit report will reflect those prescriptions.

Diabetes Audit Results, Portland Area, 2004-2011

ACE Inhibitor or ARB Prescriptions



Antiplatelet Therapy

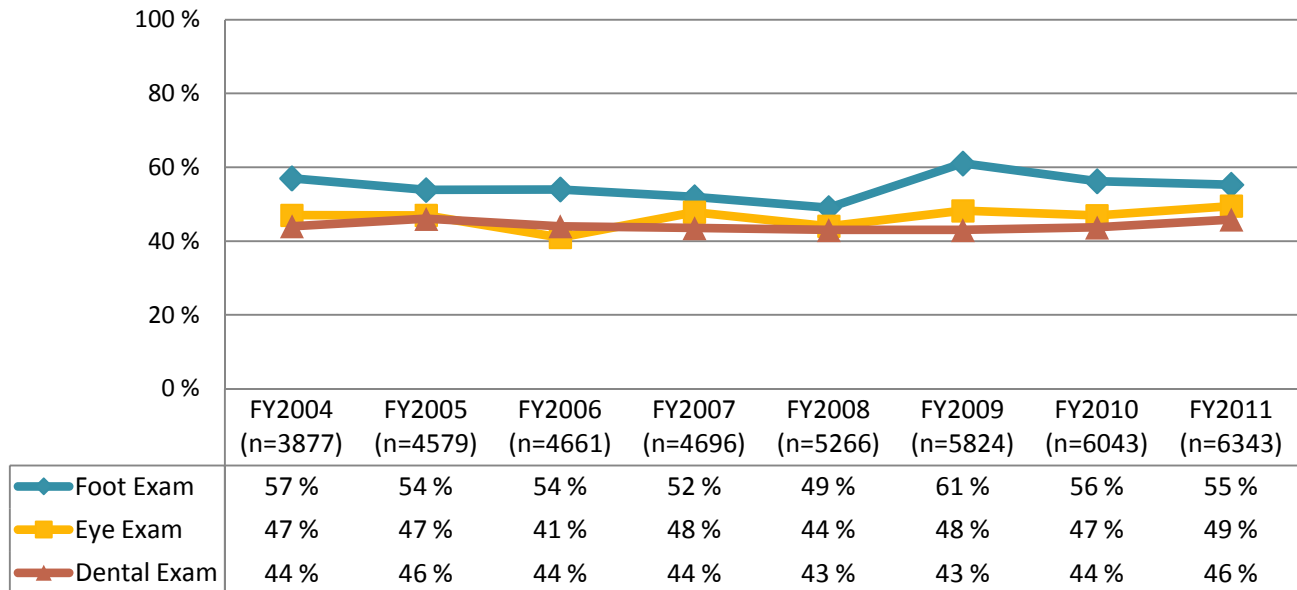


Denominators (n=) are not displayed on this page. These charts represent various subsets of patients, and not the entire population included in the audit.

A blank indicates a category not reported on in a given year; FY = Fiscal Year, the year in which data were submitted.

Diabetes Audit Results, Portland Area, 2004-2011

Annual Examinations

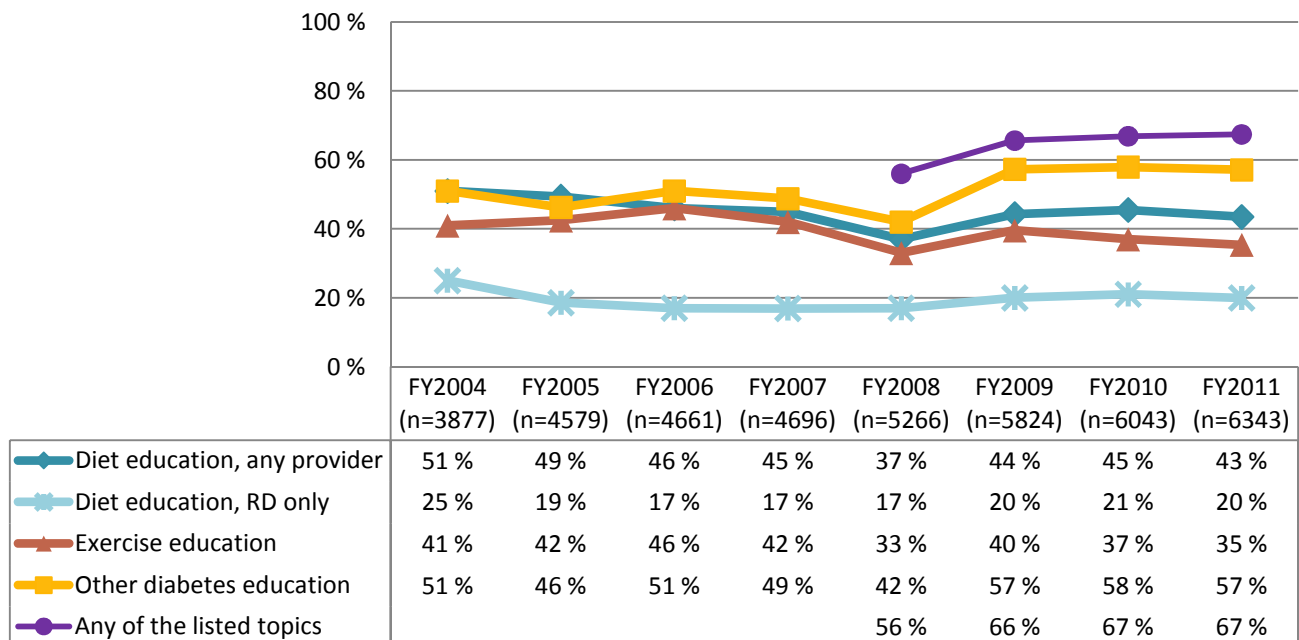


Eye Exam: A dilated fundoscopic exam conducted by a primary care provider, optometrist or ophthalmologist, or fundoscopic photographs reviewed by an ophthalmologist.

Foot Exam: An examination of the feet that includes neurologic and vascular evaluation as well as visual inspection for deformities or lesions.

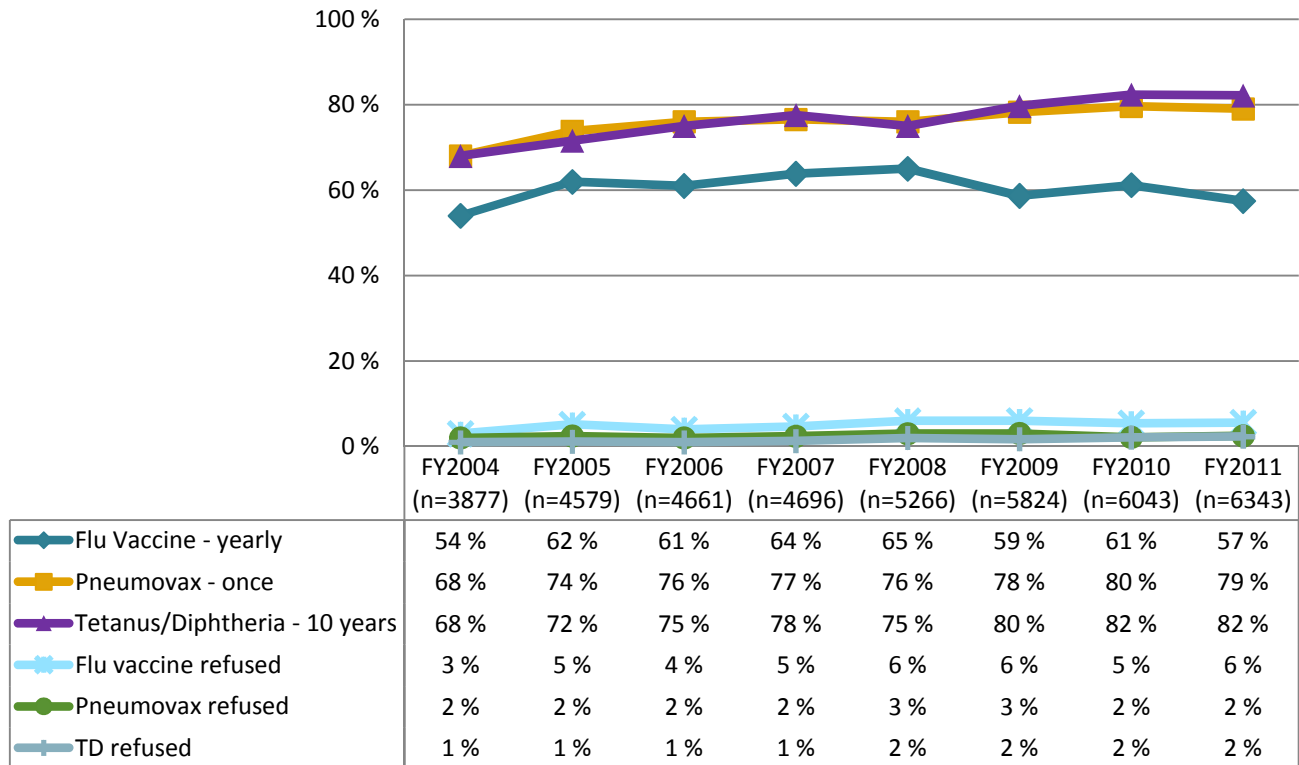
Dental Exam: The dental examination is one that includes evaluation of the teeth (if present), gingiva and mucosal surfaces.

Diabetes-Related Education

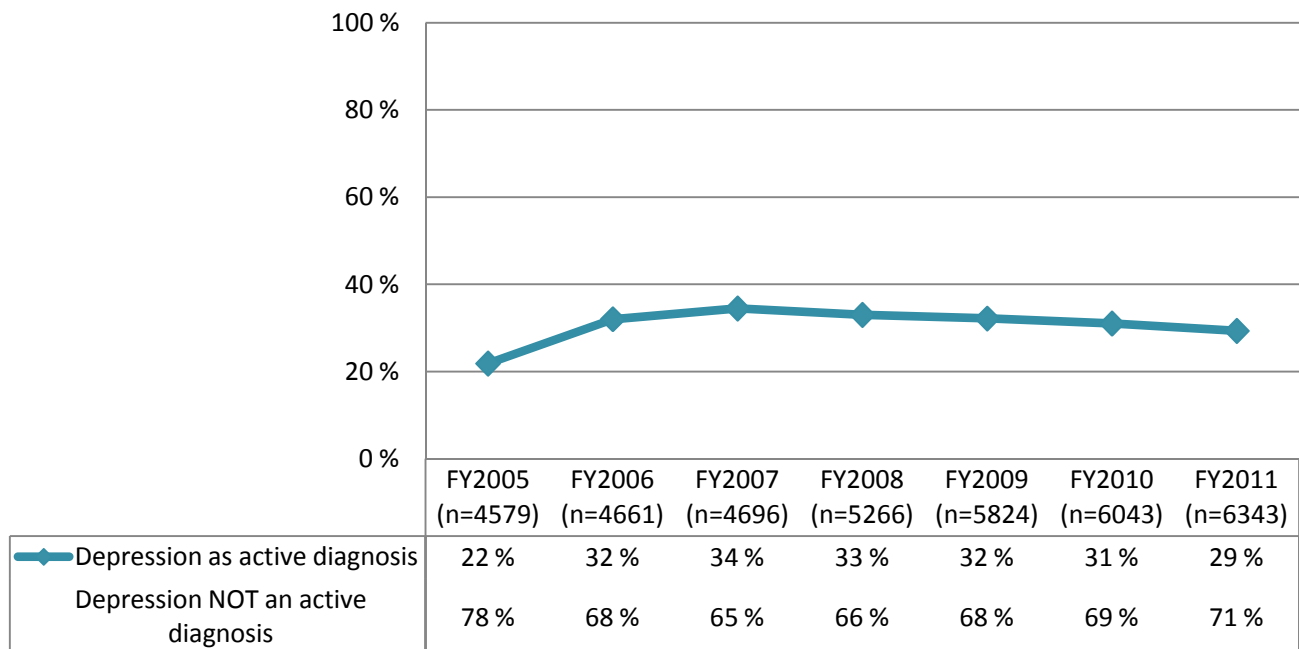


Diabetes Audit Results, Portland Area, 2004-2011

Immunizations



Diagnosed Depression

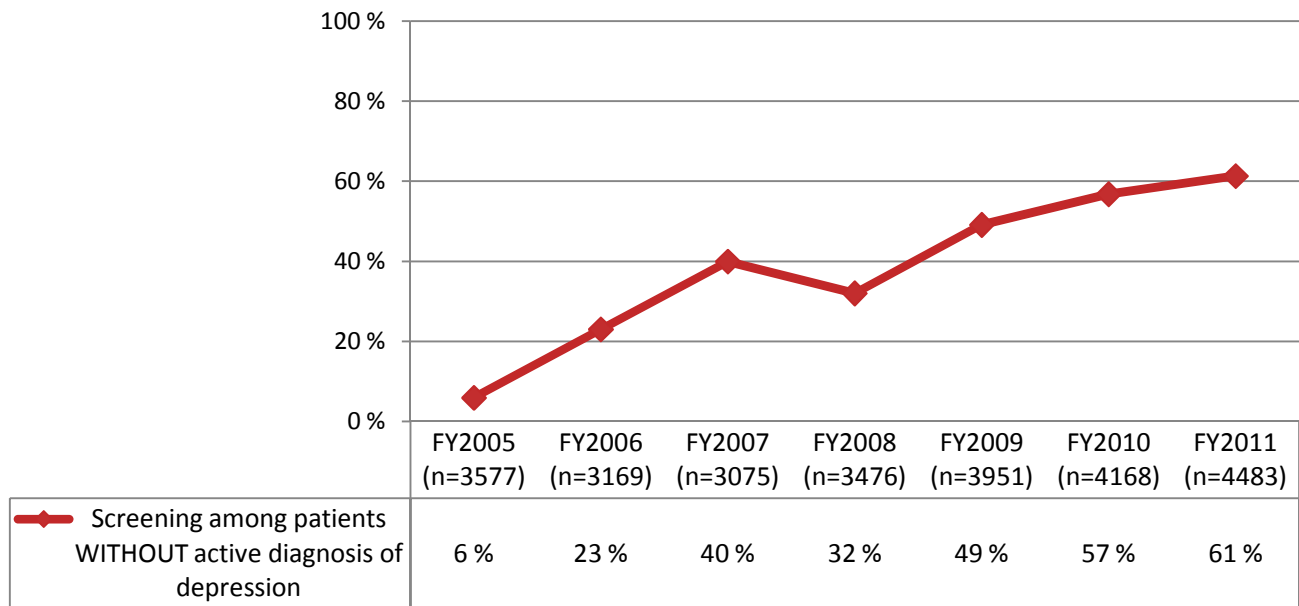


Note: Depression and depression screening were added to the audit in FY2005.

A blank indicates a category not reported on in a given year; FY = Fiscal Year, the year in which data were submitted.

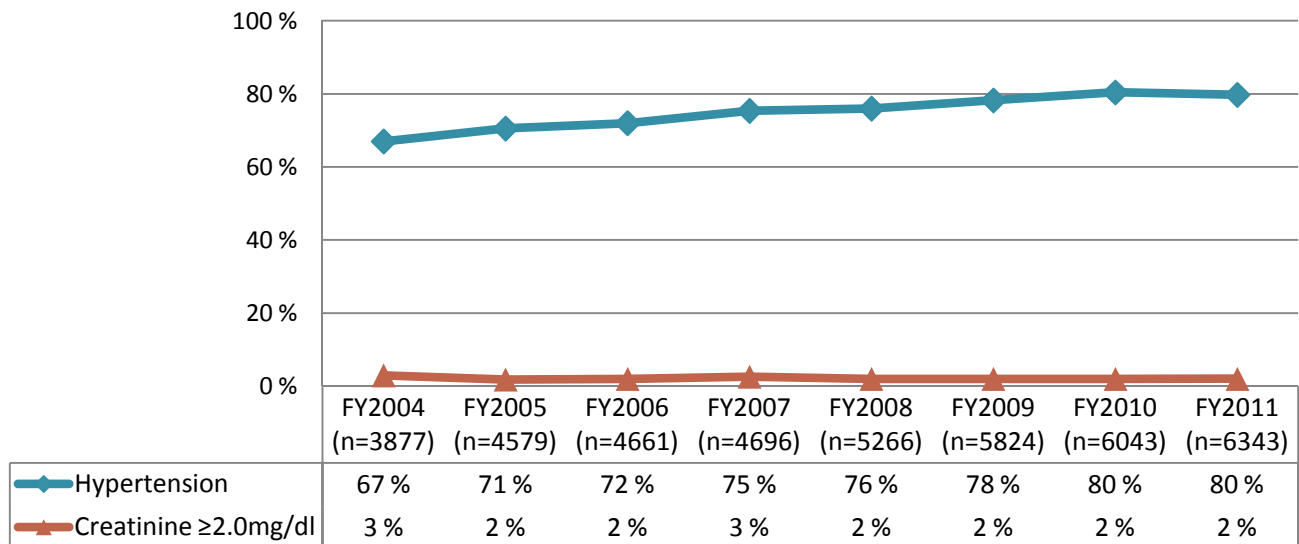
Diabetes Audit Results, Portland Area, 2004-2011

Depression Screening among Patients without Active Depression Diagnoses



Note: Depression and depression screening were added to the audit in FY2005.

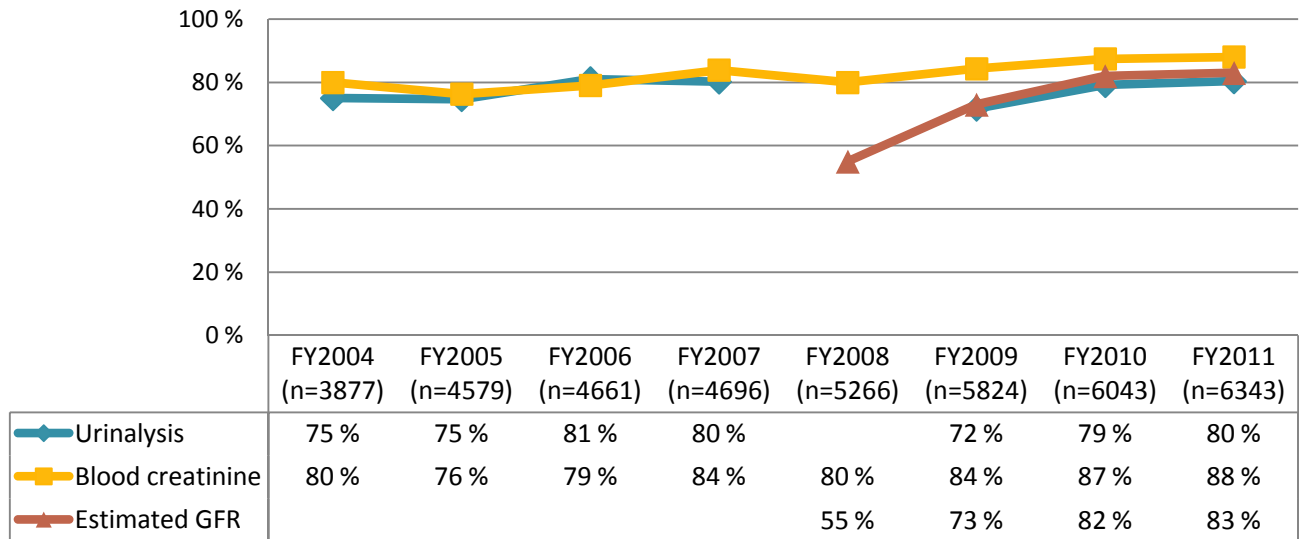
Patients with Hypertension or Elevated Blood Creatinine



Patient has "known hypertension" if hypertension is on the problem list or the patient has had at least 3 visits with a diagnosis of hypertension.

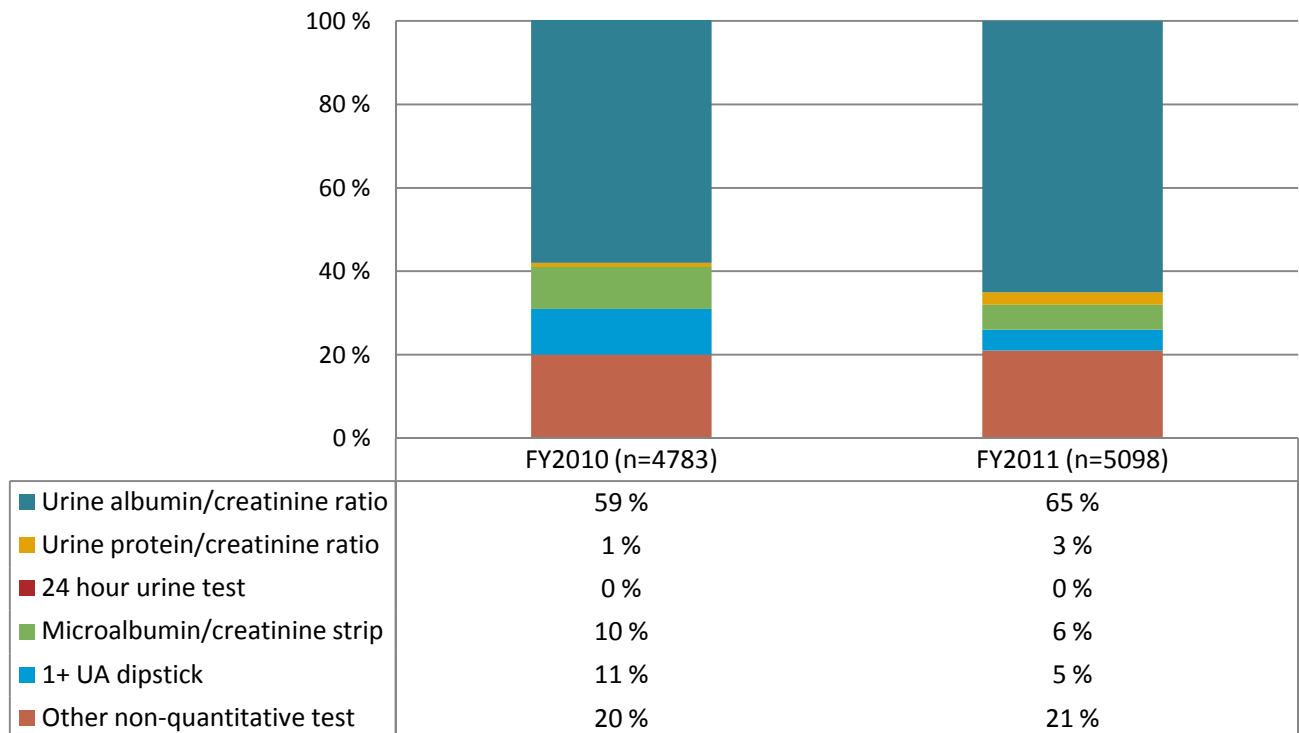
Diabetes Audit Results, Portland Area, 2004-2011

Renal Function Testing



Urinalysis results for FY2008 exclude non-quantitative tests (e.g., dipstick) so cannot be compared to other years' data. FY2009 data were also collected using different definitions than before. Estimated GFR was added in FY2008.

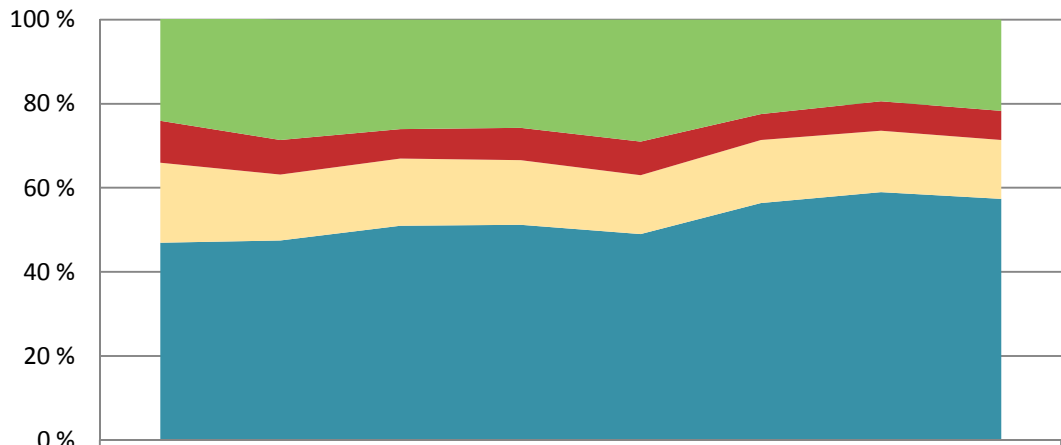
Type of Urine Protein Testing



A blank indicates a category not reported on in a given year; FY = Fiscal Year, the year in which data were submitted.

Diabetes Audit Results, Portland Area, 2004-2011

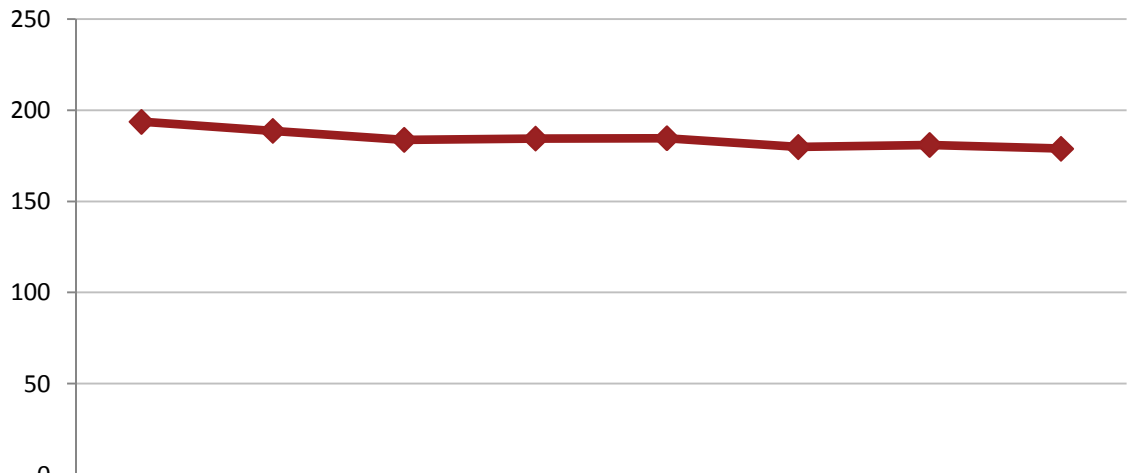
Cholesterol



| | FY2004 (n=3877) | FY2005 (n=4579) | FY2006 (n=4661) | FY2007 (n=4696) | FY2008 (n=5266) | FY2009 (n=5824) | FY2010 (n=6043) | FY2011 (n=6343) |
|--|--------------------|--------------------|--------------------|--------------------|--------------------|--------------------|--------------------|--------------------|
|--|--------------------|--------------------|--------------------|--------------------|--------------------|--------------------|--------------------|--------------------|

| | | | | | | | | |
|---------------------------|------|------|------|------|------|------|------|------|
| Not tested | 25 % | 29 % | 26 % | 26 % | 29 % | 22 % | 19 % | 22 % |
| High (240 mg/dl or more) | 10 % | 8 % | 7 % | 8 % | 8 % | 6 % | 7 % | 7 % |
| Borderline (200-239 g/dl) | 19 % | 16 % | 16 % | 15 % | 14 % | 15 % | 15 % | 14 % |
| Desirable (<200 mg/dl) | 47 % | 48 % | 51 % | 51 % | 49 % | 56 % | 59 % | 57 % |

Average Cholesterol

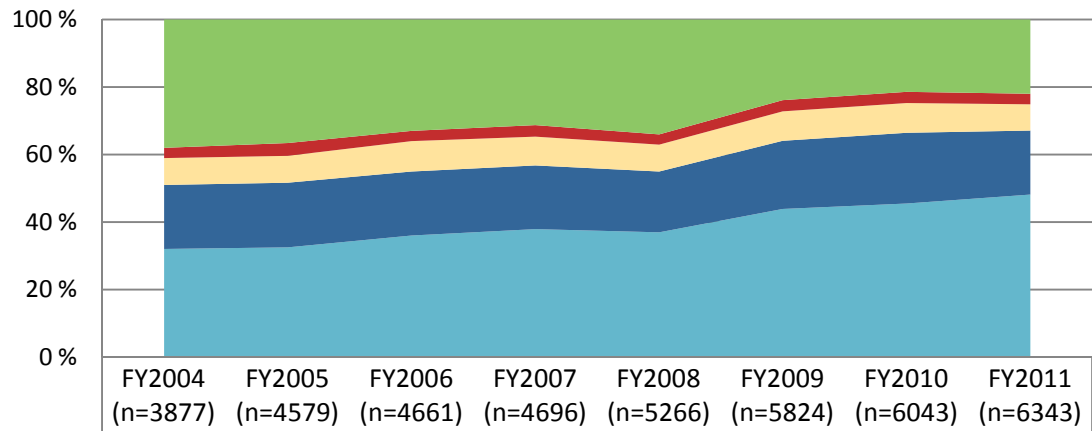


| | FY2004 (n=2750) | FY2005 (n=3154) | FY2006 (n=3303) | FY2007 (n=3423) | FY2008 (n=3796) | FY2009 (n=4548) | FY2010 (n=4914) | FY2011 (n=5041) |
|--|--------------------|--------------------|--------------------|--------------------|--------------------|--------------------|--------------------|--------------------|
|--|--------------------|--------------------|--------------------|--------------------|--------------------|--------------------|--------------------|--------------------|

| | | | | | | | | |
|--------------------|---------|---------|---------|---------|---------|---------|---------|---------|
| Mean cholesterol | 193.670 | 188.713 | 183.800 | 184.459 | 184.670 | 179.828 | 180.993 | 178.92 |
| Standard error | 0.460 | 0.394 | 0.450 | 0.432 | 0.270 | 0.304 | 0.383 | 0.24 |
| 95% CI upper limit | 194.572 | 189.484 | 184.682 | 185.305 | 185.199 | 180.423 | 181.745 | 179.381 |
| 95% CI lower limit | 192.768 | 187.942 | 182.918 | 183.612 | 184.141 | 179.233 | 180.242 | 178.456 |

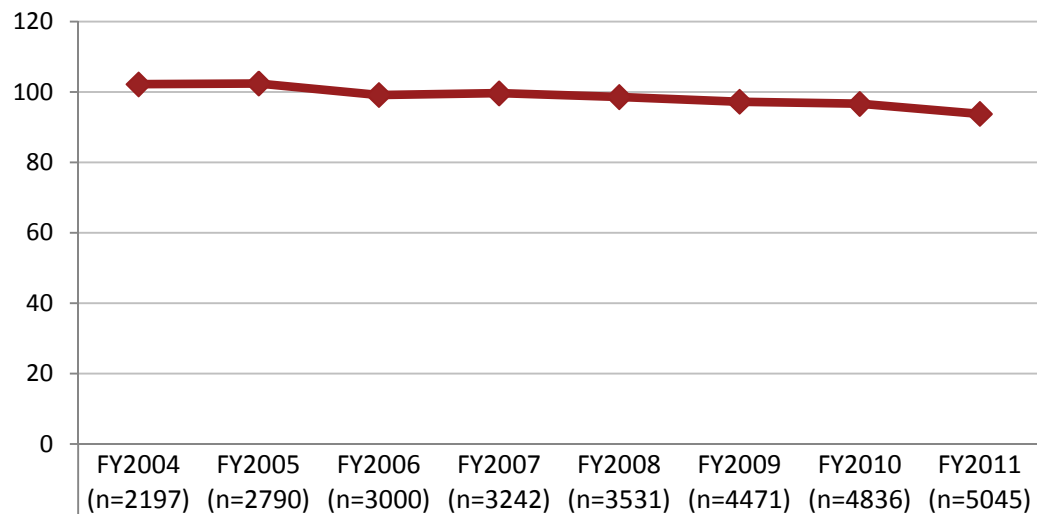
Diabetes Audit Results, Portland Area, 2004-2011

Low-Density Lipoprotein (LDL) Cholesterol



| | | | | | | | | |
|------------------------|------|------|------|------|------|------|------|------|
| Not tested | 38 % | 37 % | 33 % | 31 % | 34 % | 24 % | 21 % | 22 % |
| LDL >160 | 3 % | 4 % | 3 % | 3 % | 3 % | 3 % | 3 % | 3 % |
| LDL 130-160 mg/dl | 8 % | 8 % | 9 % | 8 % | 8 % | 9 % | 9 % | 8 % |
| LDL 100-129 mg/dl | 19 % | 19 % | 19 % | 19 % | 18 % | 20 % | 21 % | 19 % |
| Desirable (<100 mg/dl) | 32 % | 33 % | 36 % | 38 % | 37 % | 44 % | 46 % | 48 % |

Average LDL Cholesterol

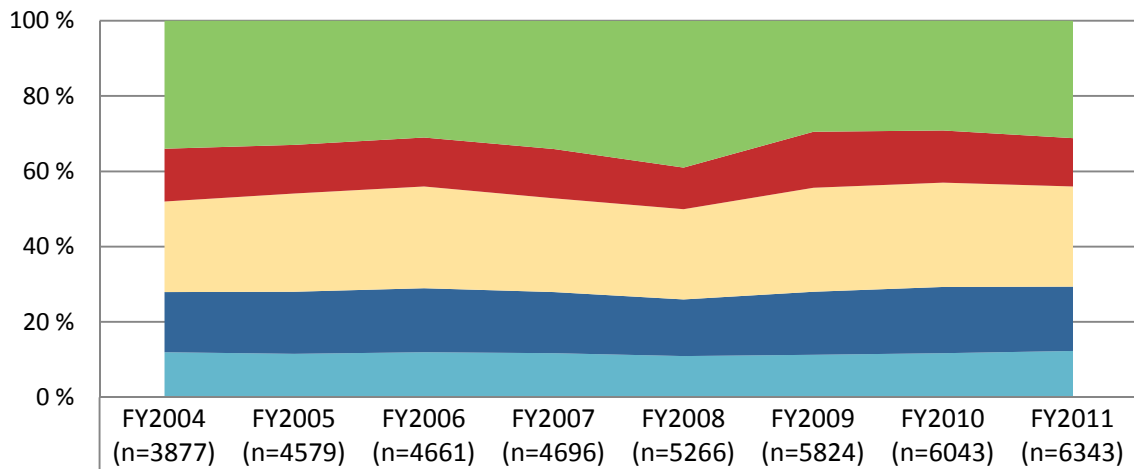


| | | | | | | | | |
|--------------------|---------|---------|--------|---------|--------|--------|--------|--------|
| Mean LDL | 102.180 | 102.414 | 99.150 | 99.626 | 98.580 | 97.249 | 96.640 | 93.78 |
| Standard error | 0.380 | 0.318 | 0.380 | 0.370 | 0.210 | 0.245 | 0.211 | 0.17 |
| 95% CI upper limit | 102.925 | 103.037 | 99.895 | 100.351 | 98.992 | 97.729 | 97.053 | 94.112 |
| 95% CI lower limit | 101.435 | 101.791 | 98.405 | 98.901 | 98.168 | 96.769 | 96.227 | 93.441 |

A blank indicates a category not reported on in a given year; FY = Fiscal Year, the year in which data were submitted.

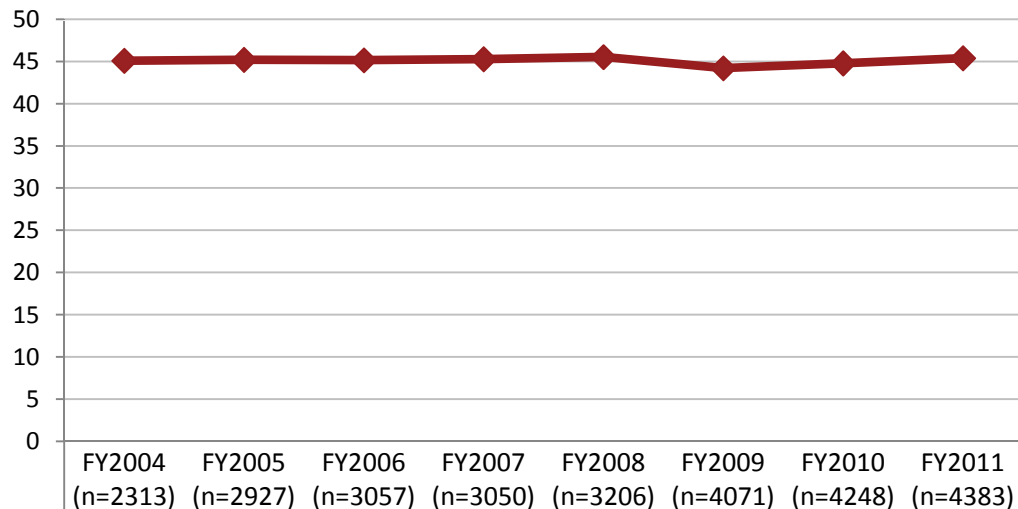
Diabetes Audit Results, Portland Area, 2004-2011

High-Density Lipoprotein (HDL) Cholesterol



| | | | | | | | | |
|-----------------|------|------|------|------|------|------|------|------|
| Not tested | 34 % | 33 % | 31 % | 34 % | 39 % | 29 % | 29 % | 31 % |
| HDL <35 mg/dl | 14 % | 13 % | 13 % | 13 % | 11 % | 15 % | 14 % | 13 % |
| HDL 35-45 mg/dl | 24 % | 26 % | 27 % | 25 % | 24 % | 28 % | 28 % | 27 % |
| HDL 46-55 mg/dl | 16 % | 16 % | 17 % | 16 % | 15 % | 17 % | 18 % | 17 % |
| HDL >55 | 12 % | 12 % | 12 % | 12 % | 11 % | 11 % | 12 % | 12 % |

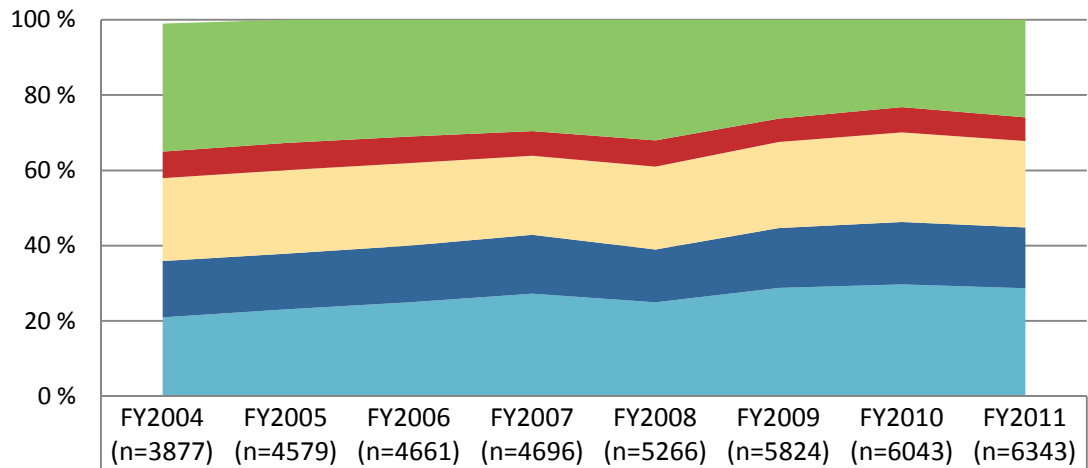
Average HDL Cholesterol



| | | | | | | | | |
|--------------------|--------|--------|--------|--------|--------|--------|--------|--------|
| Mean HDL | 45.080 | 45.187 | 45.140 | 45.265 | 45.520 | 44.200 | 44.772 | 45.38 |
| Standard error | 0.160 | 0.121 | 0.140 | 0.148 | 0.080 | 0.094 | 0.086 | 0.07 |
| 95% CI upper limit | 45.394 | 45.425 | 45.414 | 45.556 | 45.677 | 44.384 | 44.940 | 45.529 |
| 95% CI lower limit | 44.766 | 44.950 | 44.866 | 44.974 | 45.363 | 44.015 | 44.604 | 45.237 |

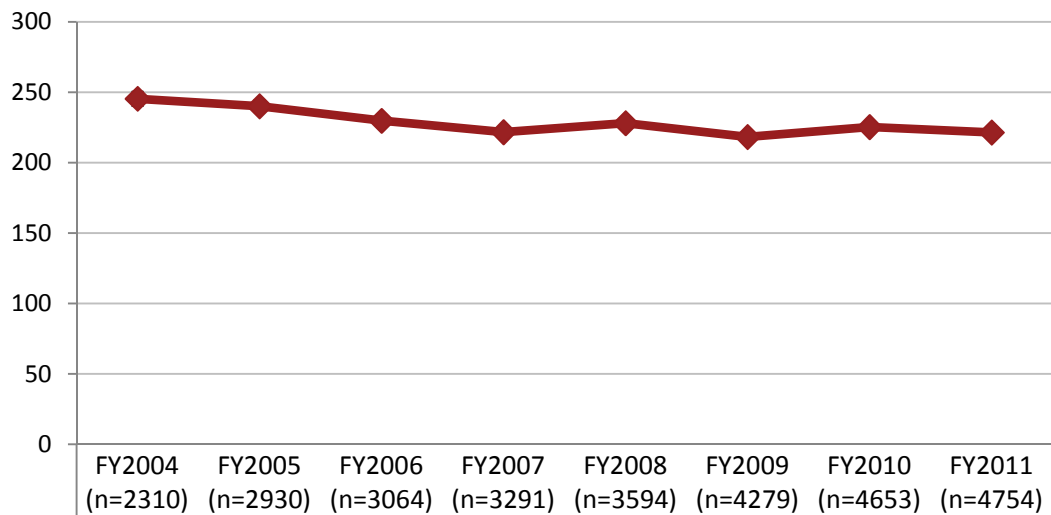
Diabetes Audit Results, Portland Area, 2004-2011

Triglycerides



| | | | | | | | | |
|------------------------|------|------|------|------|------|------|------|------|
| Not tested | 34 % | 33 % | 31 % | 30 % | 32 % | 26 % | 23 % | 26 % |
| TG >400 mg/dl | 7 % | 7 % | 7 % | 6 % | 7 % | 6 % | 7 % | 6 % |
| TG 200-400 mg/dl | 22 % | 22 % | 22 % | 21 % | 22 % | 23 % | 24 % | 23 % |
| TG 150-199 mg/dl | 15 % | 15 % | 15 % | 16 % | 14 % | 16 % | 17 % | 16 % |
| Desirable (<150 mg/dl) | 21 % | 23 % | 25 % | 27 % | 25 % | 29 % | 30 % | 29 % |

Average Triglyceride Levels

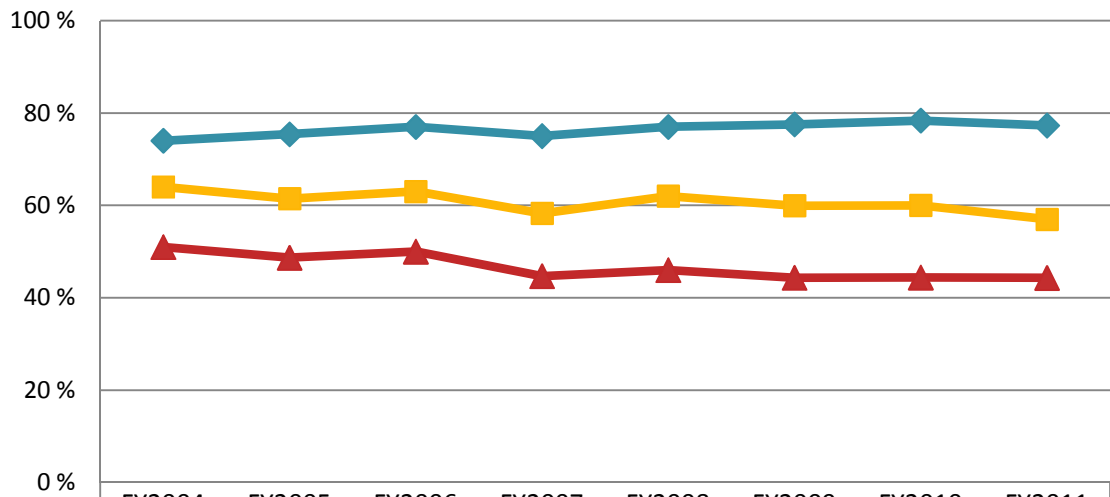


| | | | | | | | | |
|----------------------|---------|---------|---------|---------|---------|---------|---------|---------|
| ◆ Mean triglycerides | 245.400 | 240.117 | 229.780 | 221.670 | 228.040 | 218.309 | 225.319 | 221.50 |
| Standard error | 2.570 | 2.140 | 1.880 | 1.708 | 1.160 | 1.382 | 1.939 | 1.16 |
| 95% CI upper limit | 250.437 | 244.312 | 233.465 | 225.019 | 230.314 | 221.017 | 229.119 | 223.770 |
| 95% CI lower limit | 240.363 | 235.921 | 226.095 | 218.322 | 225.766 | 215.601 | 221.520 | 219.233 |

A blank indicates a category not reported on in a given year; FY = Fiscal Year, the year in which data were submitted.

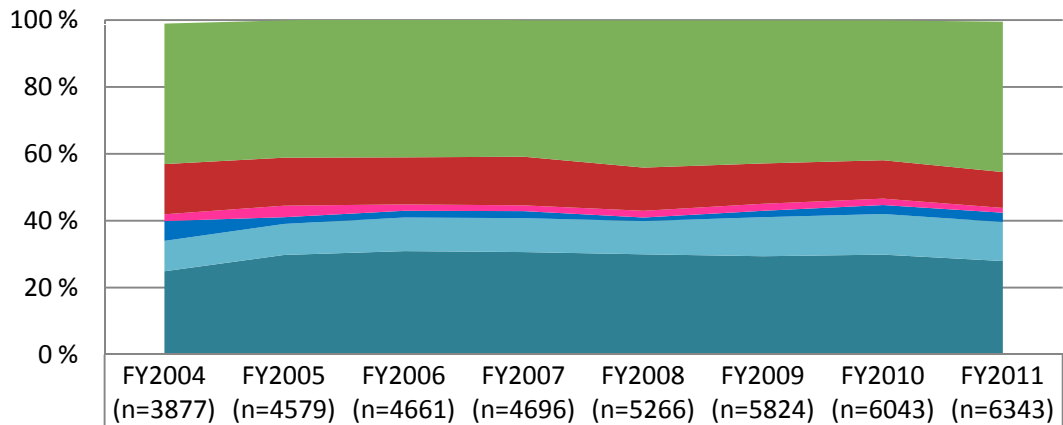
Diabetes Audit Results, Portland Area, 2004-2011

EKG among Patients 30 and Older



| | FY2004 | FY2005 | FY2006 | FY2007 | FY2008 | FY2009 | FY2010 | FY2011 |
|---------------------|--------|--------|--------|--------|--------|--------|--------|--------|
| EKG ever | 74 % | 75 % | 77 % | 75 % | 77 % | 78 % | 78 % | 77 % |
| EKG in last 5 years | 64 % | 61 % | 63 % | 58 % | 62 % | 60 % | 60 % | 57 % |
| EKG in last 3 years | 51 % | 49 % | 50 % | 45 % | 46 % | 44 % | 44 % | 44 % |

Tuberculosis or PPD History



| | FY2004 (n=3877) | FY2005 (n=4579) | FY2006 (n=4661) | FY2007 (n=4696) | FY2008 (n=5266) | FY2009 (n=5824) | FY2010 (n=6043) | FY2011 (n=6343) |
|----------------------------------------|--------------------|--------------------|--------------------|--------------------|--------------------|--------------------|--------------------|--------------------|
| TB test status unknown | 42 % | 41 % | 42 % | 41 % | 44 % | 43 % | 42 % | 45 % |
| Test +, untreated or treatment unknown | 15 % | 14 % | 14 % | 15 % | 13 % | 12 % | 12 % | 11 % |
| Test +, INH treatment complete | 2 % | 3 % | 2 % | 2 % | 2 % | 2 % | 2 % | 1 % |
| Test -, date of test or DM Dx unknown | 6 % | 2 % | 2 % | 2 % | 1 % | 2 % | 3 % | 3 % |
| Test -, placed before DM Dx | 9 % | 9 % | 10 % | 10 % | 10 % | 12 % | 12 % | 12 % |
| Test -, placed since DM Dx | 25 % | 30 % | 31 % | 31 % | 30 % | 29 % | 30 % | 28 % |

A negative PPD or blood test (added to the Audit in 2010) for tuberculosis is considered current if it was placed after the date of diabetes diagnosis. INH treatment is noted only if the treatment course was completed.

2011 Diabetes Audit: Dates of Service Jan 1 - Dec 31, 2010

This information is for the following groups:

Portland Area (n=6343 patients)

6343 sampled from 7209 active patients with diabetes (88%)

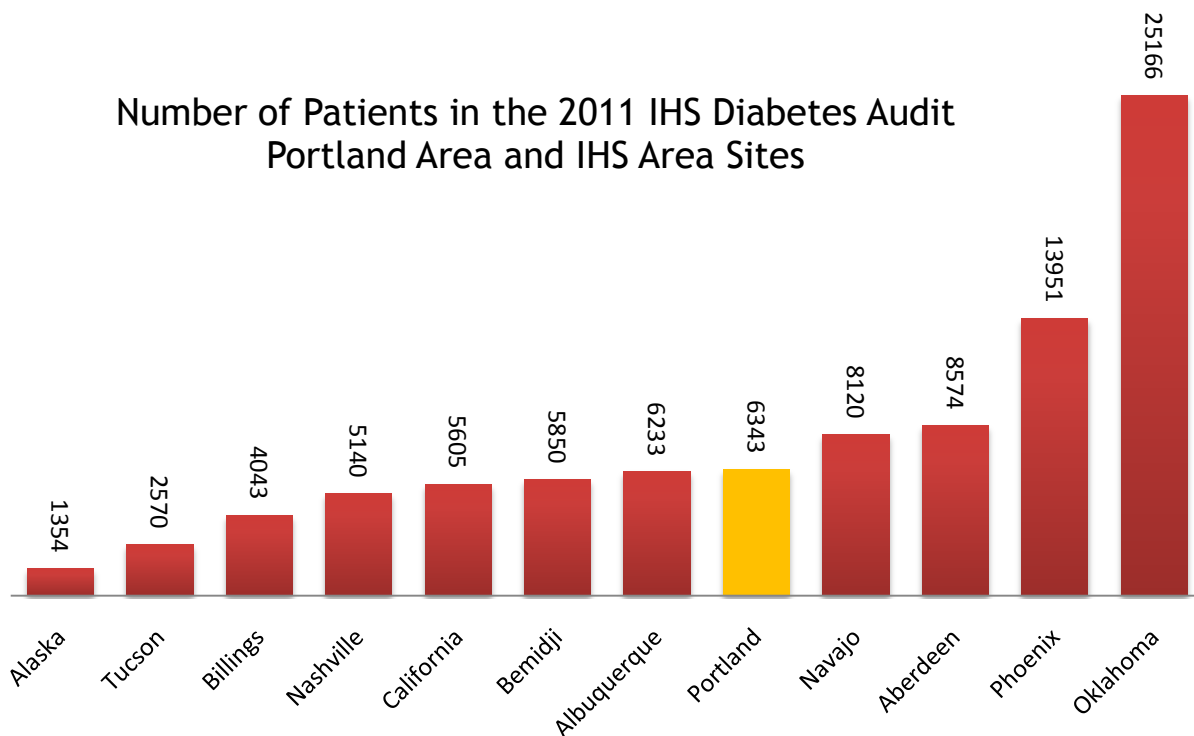
All Areas (n=92949 patients)

92949 sampled from 141884 active patients with diabetes (66%)

The following report contains information from your clinic’s Annual IHS Diabetes Audit submission. It also includes summary data from all reporting tribal, IHS and urban facilities in the Portland Area. The audit information is displayed side by side so that you can see how your site compares to the overall Portland Area. If you have any questions about the report, please contact the Western Tribal Diabetes Project at (800) 862-5497.

Who is this report about?

Patients identified by local Diabetes Program staff as having **type 1** or **type 2** diabetes and part of the active patient load, with **at least one primary care visit** in the calendar year. Only **American Indian and Alaska Native** patients are included in the audit.



2011 Diabetes Audit: Dates of Service Jan 1 - Dec 31, 2010

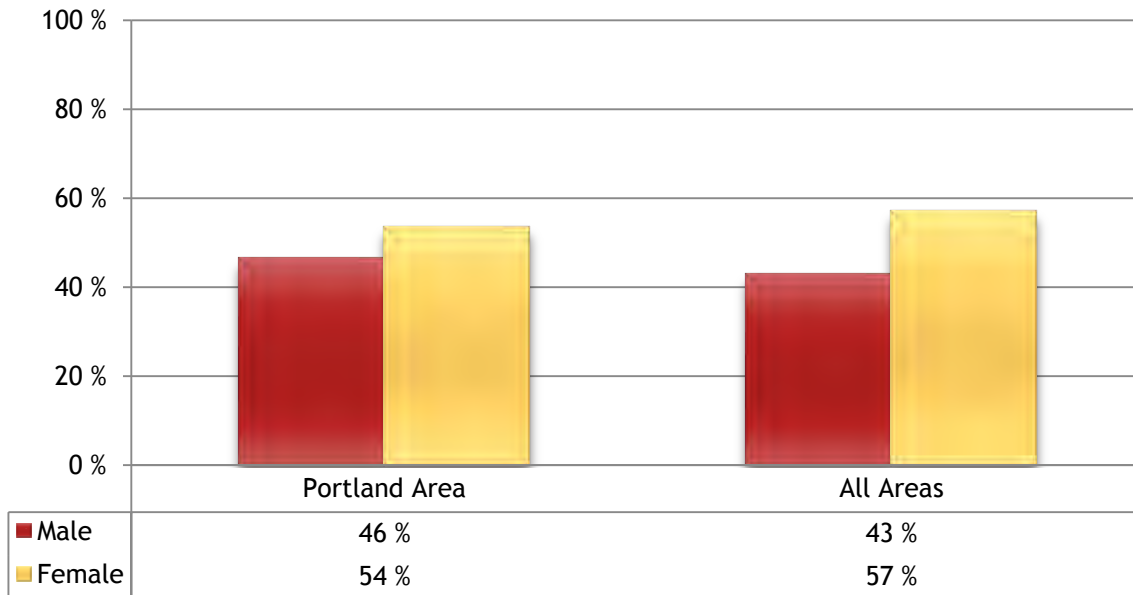
This information is for the following groups:

Portland Area (n=6343 patients)

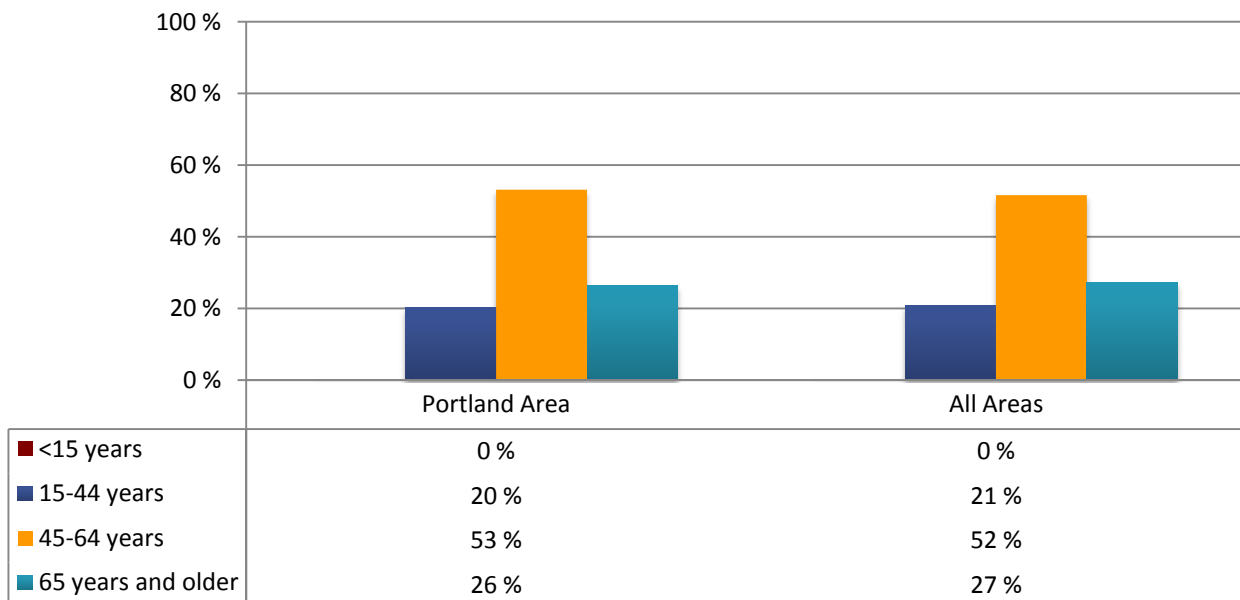
6343 sampled from 7209 active patients with diabetes (88%)

All Areas (n=92949 patients)

92949 sampled from 141884 active patients with diabetes (66%)



Age Distribution of Patients with Diabetes



2011 Diabetes Audit: Dates of Service Jan 1 - Dec 31, 2010

This information is for the following groups:

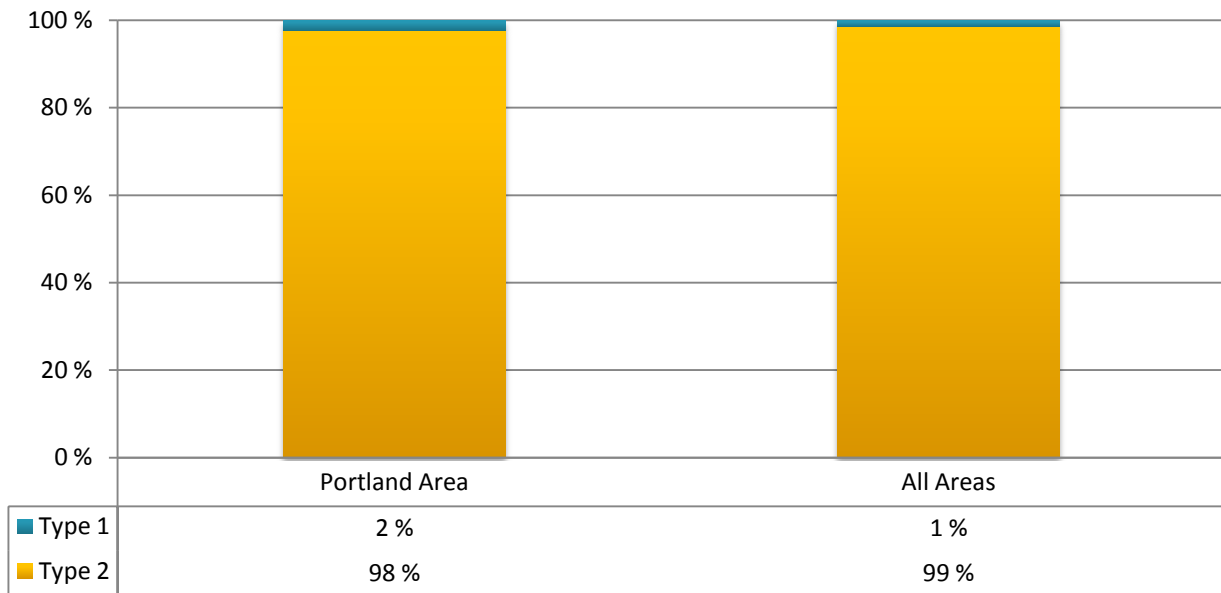
Portland Area (n=6343 patients)

All Areas (n=92949 patients)

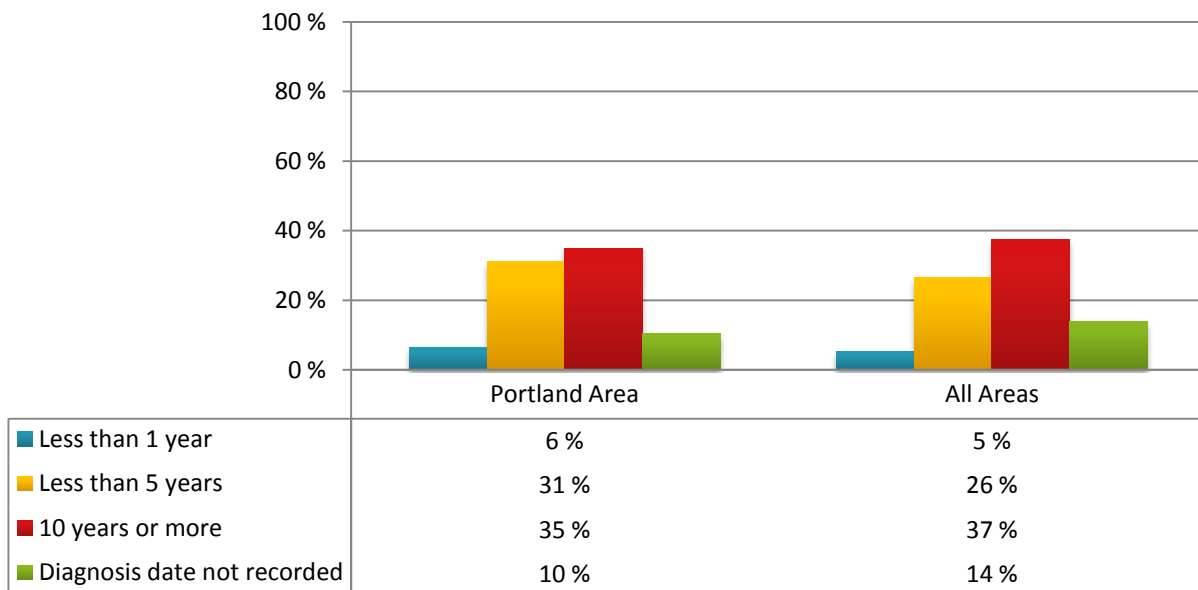
6343 sampled from 7209 active patients with diabetes (88%)

92949 sampled from 141884 active patients with diabetes (66%)

Type of Diabetes Diagnosed



Duration of Diabetes



2011 Diabetes Audit: Dates of Service Jan 1 - Dec 31, 2010

This information is for the following groups:

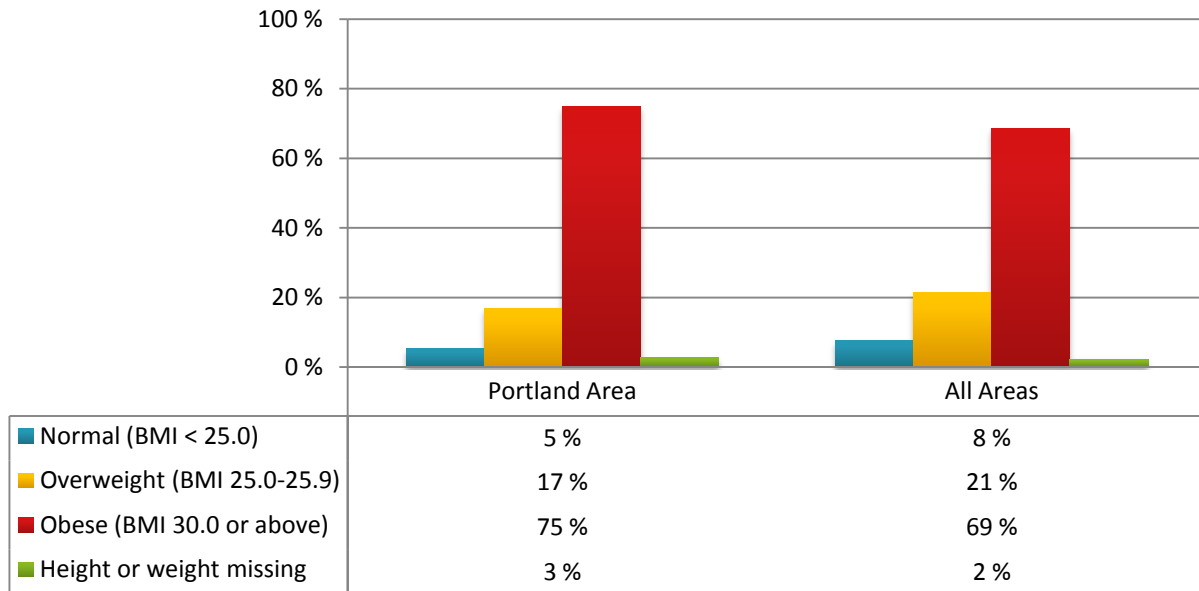
Portland Area (n=6343 patients)

All Areas (n=92949 patients)

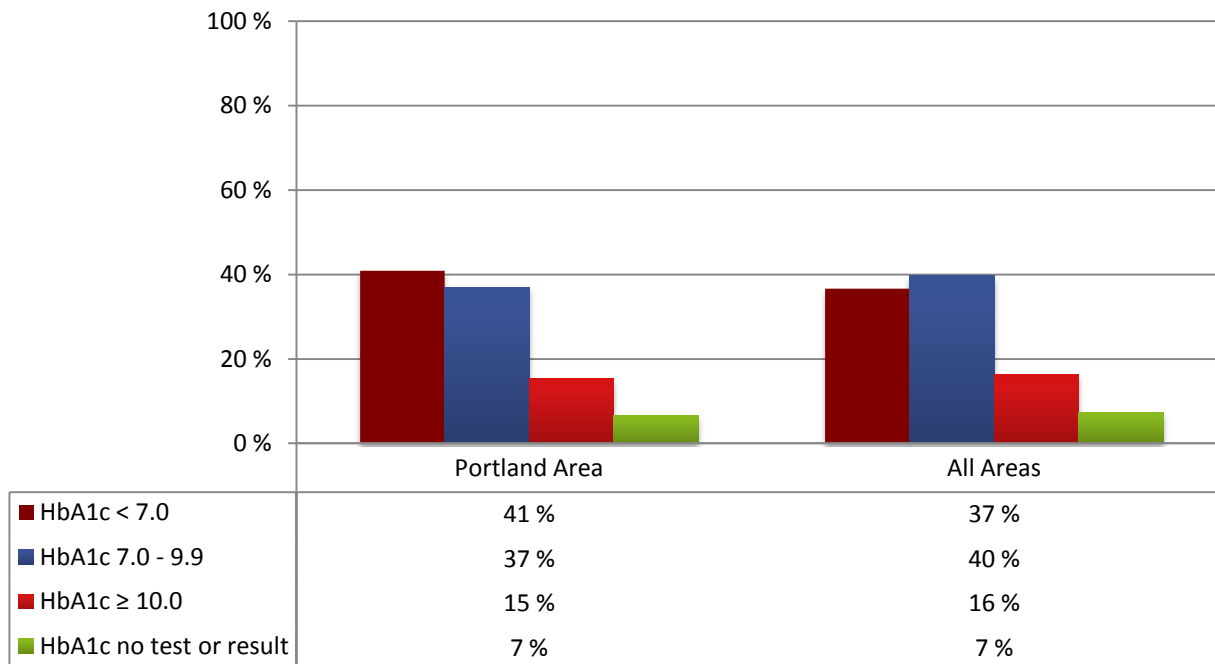
6343 sampled from 7209 active patients with diabetes (88%)

92949 sampled from 141884 active patients with diabetes (66%)

Weight (Body Mass Index)



Hemoglobin A1C



2011 Diabetes Audit: Dates of Service Jan 1 - Dec 31, 2010

This information is for the following groups:

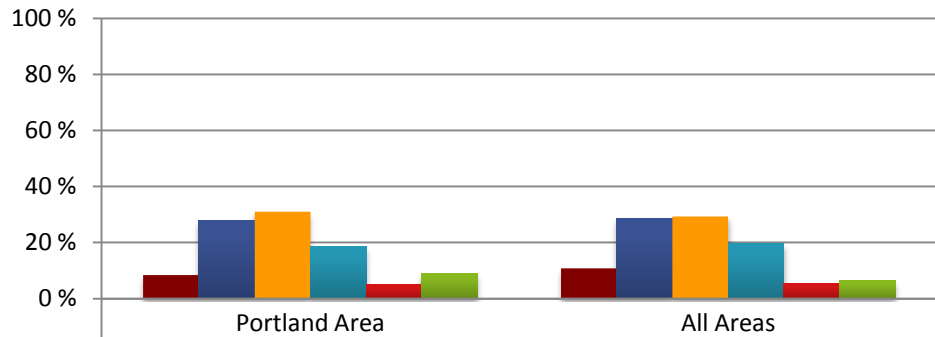
Portland Area (n=6343 patients)

All Areas (n=92949 patients)

6343 sampled from 7209 active patients with diabetes (88%)

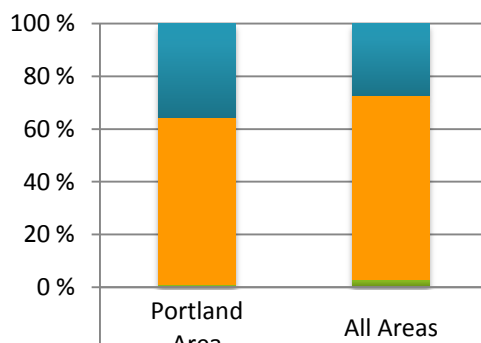
92949 sampled from 141884 active patients with diabetes (66%)

Blood Pressure



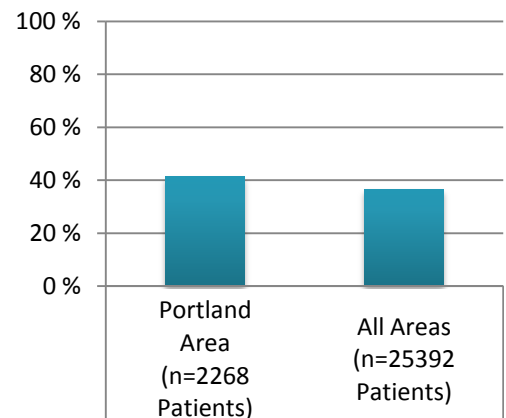
| | | |
|------------------------------------|------|------|
| ■ Ideal BP control (<120/<70) | 8 % | 11 % |
| ■ Target (120/70 - <130/<80) | 28 % | 29 % |
| ■ Adequate (130/80 - <140/<90) | 31 % | 29 % |
| ■ Inadequate (140/90 - <160/<95) | 19 % | 20 % |
| ■ Markedly poor (160/95 or higher) | 5 % | 5 % |
| ■ BP control undetermined | 9 % | 6 % |

Tobacco Use



| | | |
|------------------------------|------|------|
| ■ Current tobacco user | 36 % | 27 % |
| ■ Not a current tobacco user | 63 % | 70 % |
| ■ Tobacco use not documented | 1 % | 3 % |

Tobacco Cessation Counseling for Current Tobacco Users



| | | |
|-------------------|------|------|
| ■ Counseled - Yes | 41 % | 37 % |
|-------------------|------|------|

2011 Diabetes Audit: Dates of Service Jan 1 - Dec 31, 2010

This information is for the following groups:

Portland Area (n=6343 patients)

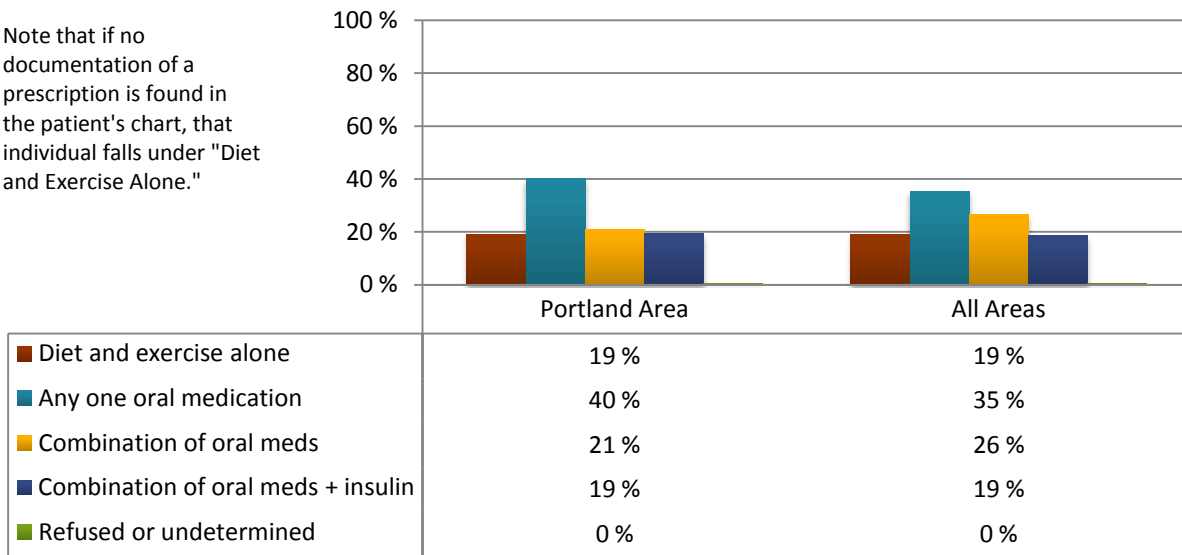
All Areas (n=92949 patients)

6343 sampled from 7209 active patients with diabetes (88%)

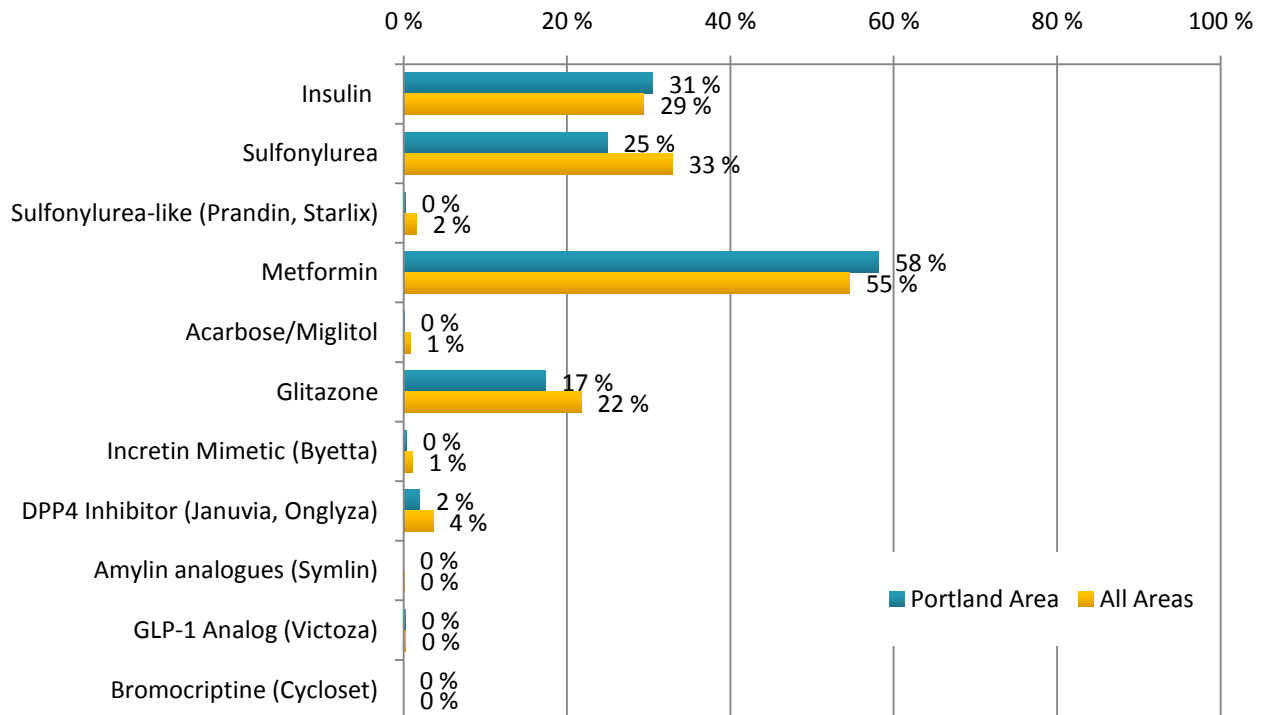
92949 sampled from 141884 active patients with diabetes (66%)

Patients with Diabetes-Related Prescriptions

Note that if no documentation of a prescription is found in the patient's chart, that individual falls under "Diet and Exercise Alone."



Diabetes Medications, Alone or in Combination



2011 Diabetes Audit: Dates of Service Jan 1 - Dec 31, 2010

This information is for the following groups:

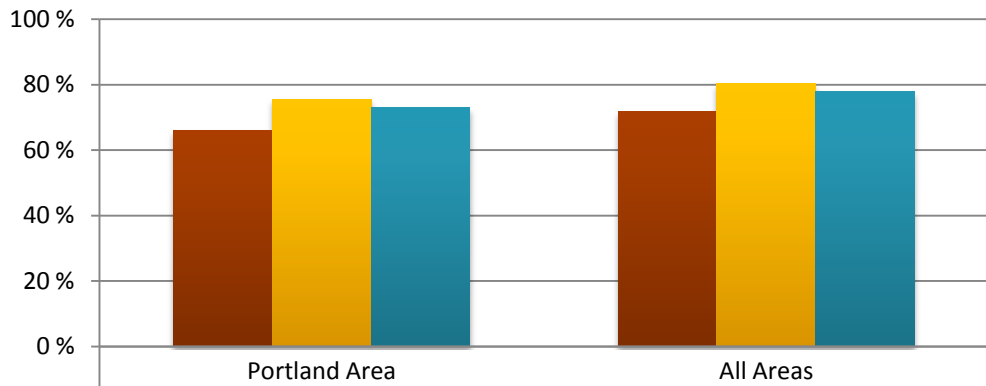
Portland Area (n=6343 patients)

All Areas (n=92949 patients)

6343 sampled from 7209 active patients with diabetes (88%)

92949 sampled from 141884 active patients with diabetes (66%)

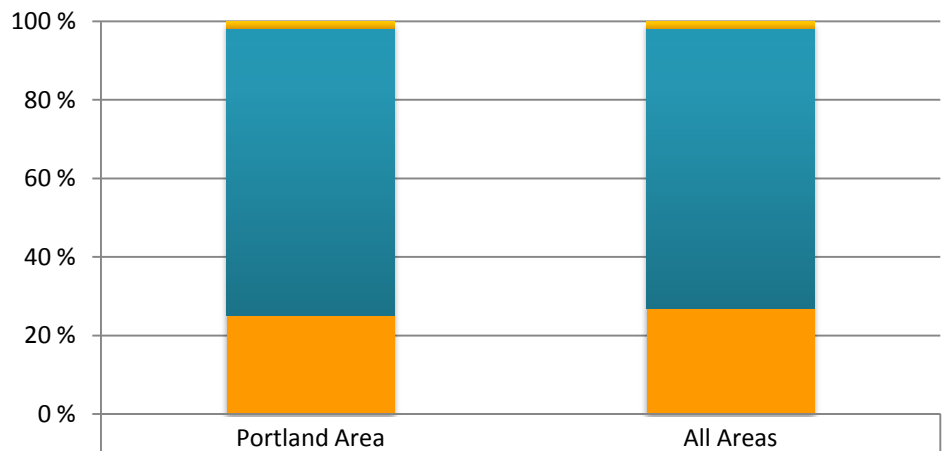
Ace Inhibitor (or ARB) Prescriptions



| | | |
|-----------------------------------------------------------------------------|------|------|
| ■ ACE or ARB Rx [overall] | 66 % | 72 % |
| ■ As a % of pts with known hypertension | 76 % | 80 % |
| ■ As a % of pts with elevated albuminuria | 73 % | 78 % |

Anti-Platelet Therapy

Among Patients
>50 years of age
(males) or >60
years of age
(females)



| | | |
|-----------------------------------------------------------------------|------|------|
| ■ Refused or Adverse Reaction | 2 % | 2 % |
| ■ Aspirin/Antiplatelet Prescription | 73 % | 71 % |
| ■ None | 25 % | 27 % |

2011 Diabetes Audit: Dates of Service Jan 1 - Dec 31, 2010

This information is for the following groups:

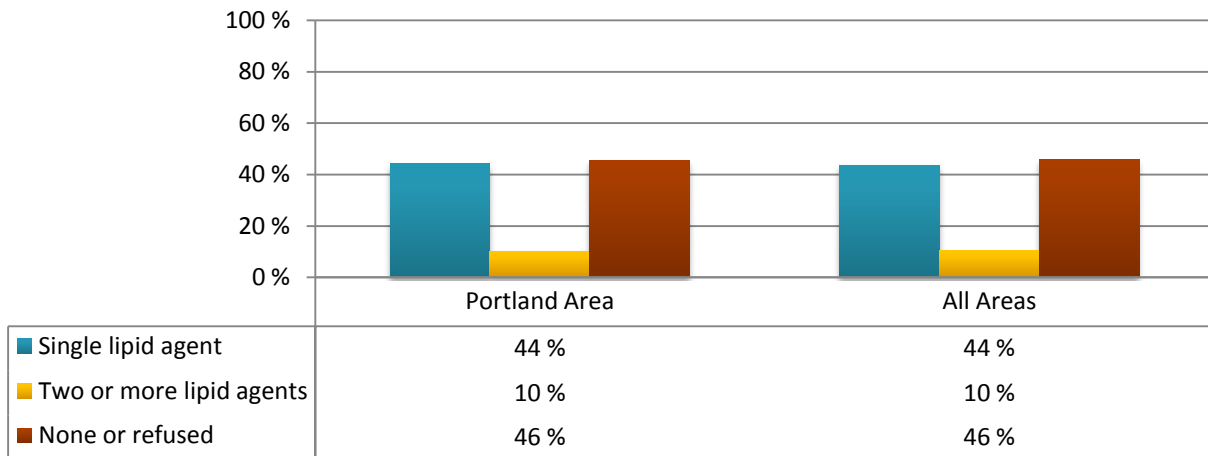
Portland Area (n=6343 patients)

All Areas (n=92949 patients)

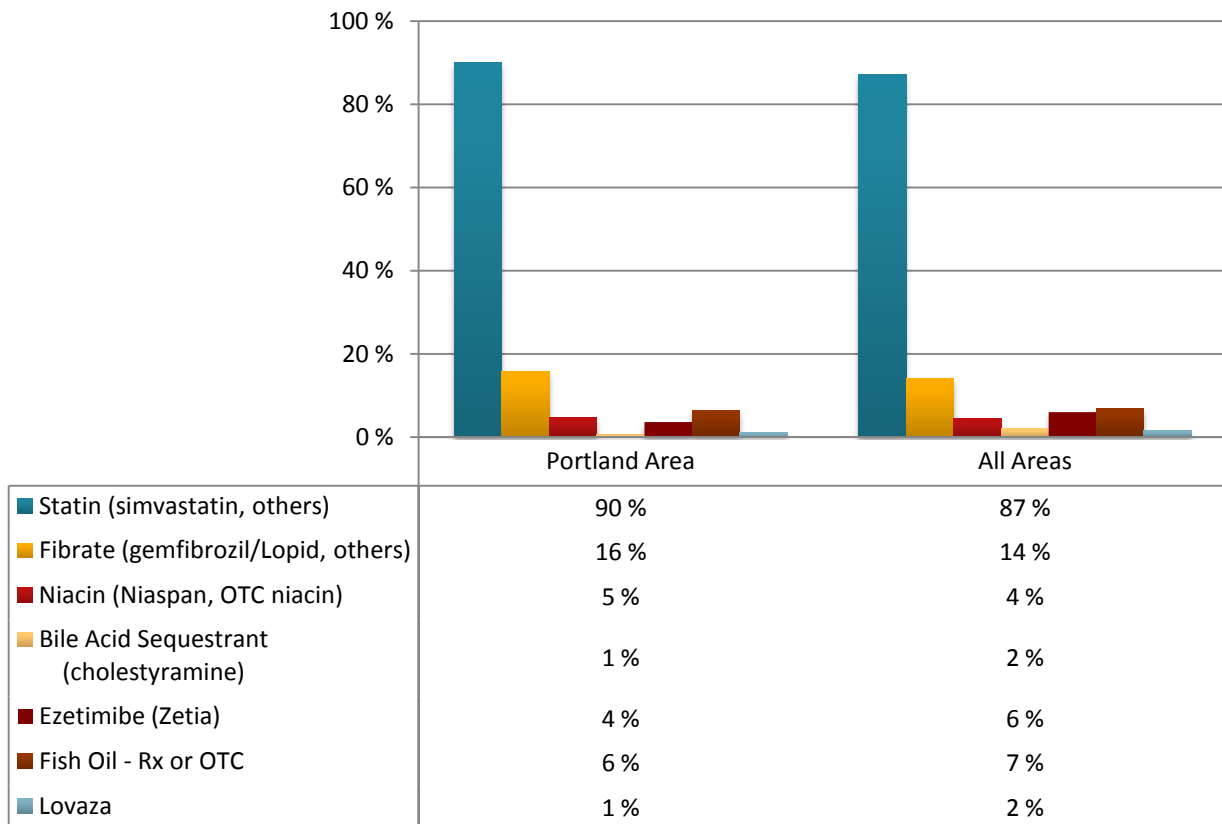
6343 sampled from 7209 active patients with diabetes (88%)

92949 sampled from 141884 active patients with diabetes (66%)

Lipid Lowering Agent Prescribed



Type of Lipid-Lowering Agent Prescribed



2011 Diabetes Audit: Dates of Service Jan 1 - Dec 31, 2010

This information is for the following groups:

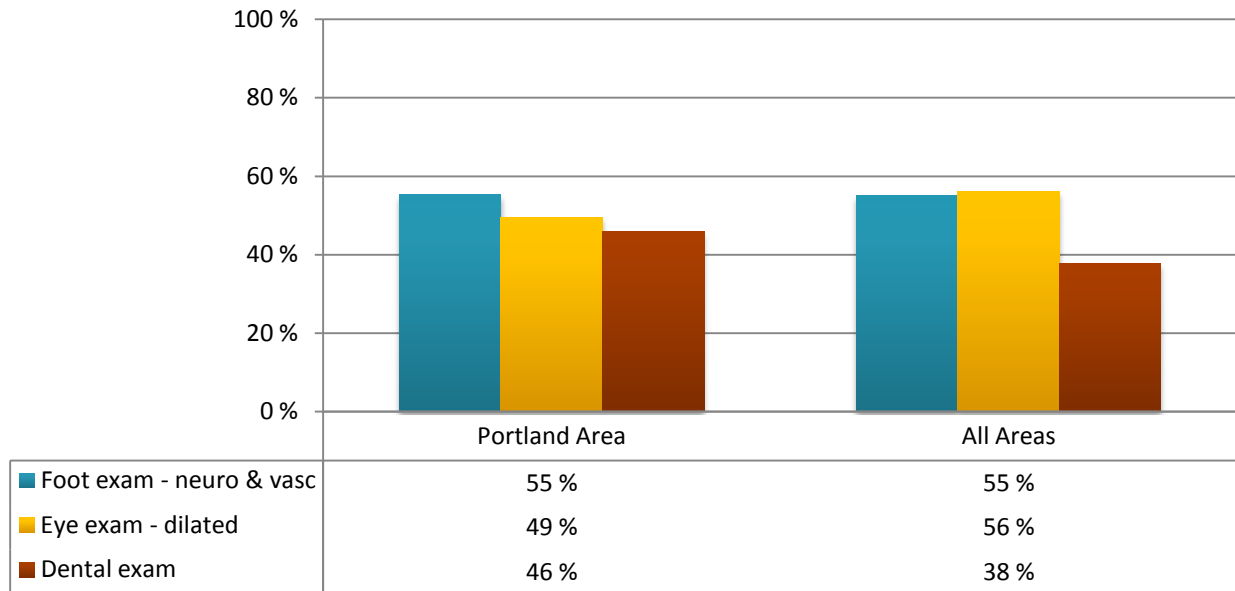
Portland Area (n=6343 patients)

All Areas (n=92949 patients)

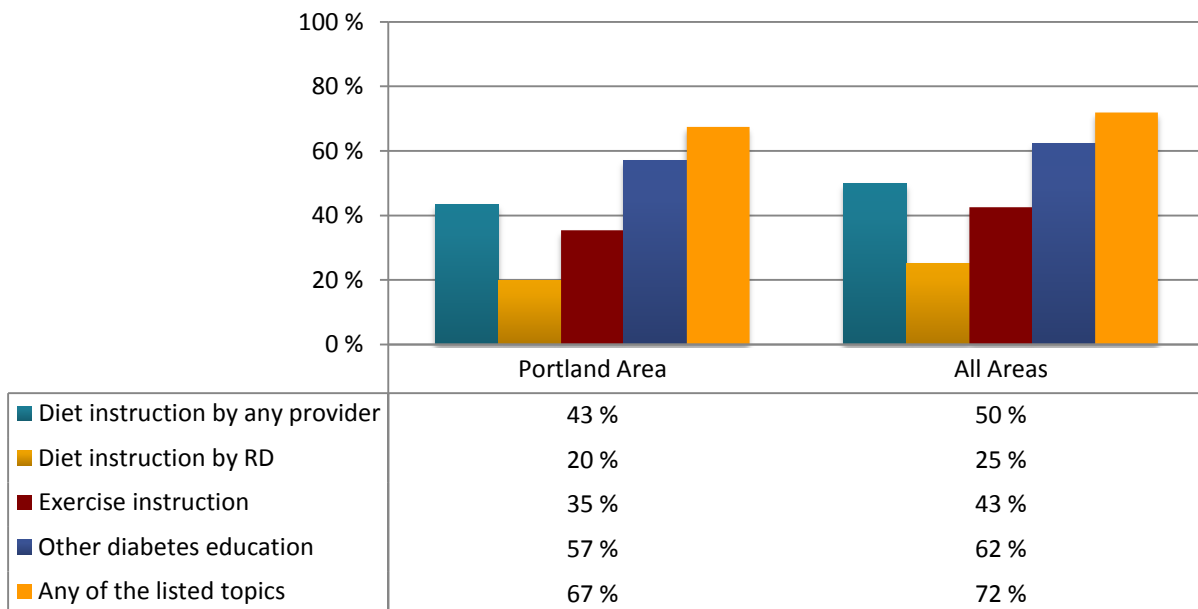
6343 sampled from 7209 active patients with diabetes (88%)

92949 sampled from 141884 active patients with diabetes (66%)

Yearly Exams



Yearly Diabetes Education



2011 Diabetes Audit: Dates of Service Jan 1 - Dec 31, 2010

This information is for the following groups:

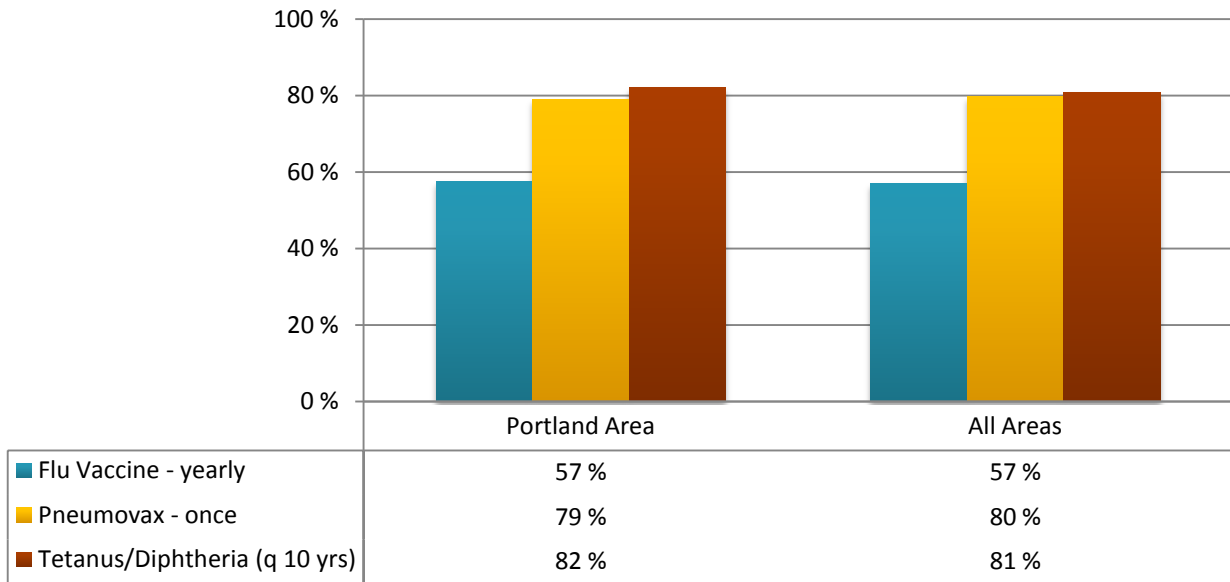
Portland Area (n=6343 patients)

6343 sampled from 7209 active patients with diabetes (88%)

All Areas (n=92949 patients)

92949 sampled from 141884 active patients with diabetes (66%)

Immunizations



Portland Area

Flu Vaccine refused: 6%

Pneumovax refused: 2%

Tetanus/Diphtheria refused: 2%

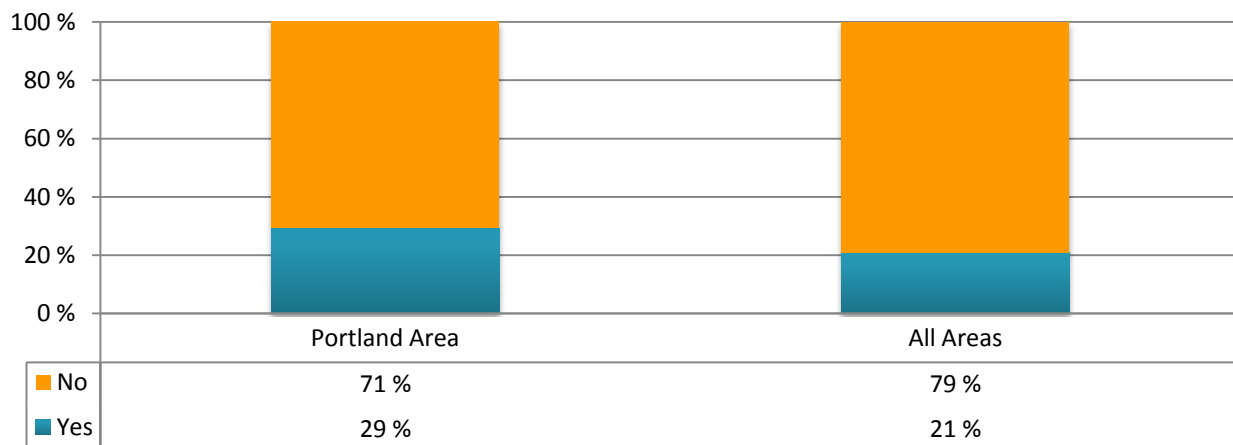
All Areas

Flu Vaccine refused: 5%

Pneumovax refused: 3%

Tetanus/Diphtheria refused: 2%

Depression Identified as Active Diagnosis



2011 Diabetes Audit: Dates of Service Jan 1 - Dec 31, 2010

This information is for the following groups:

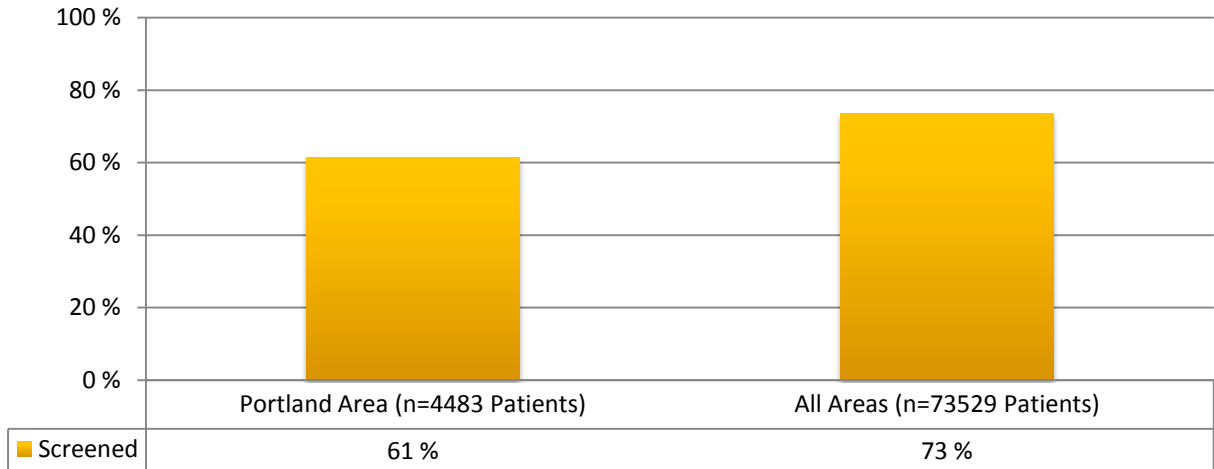
Portland Area (n=6343 patients)

All Areas (n=92949 patients)

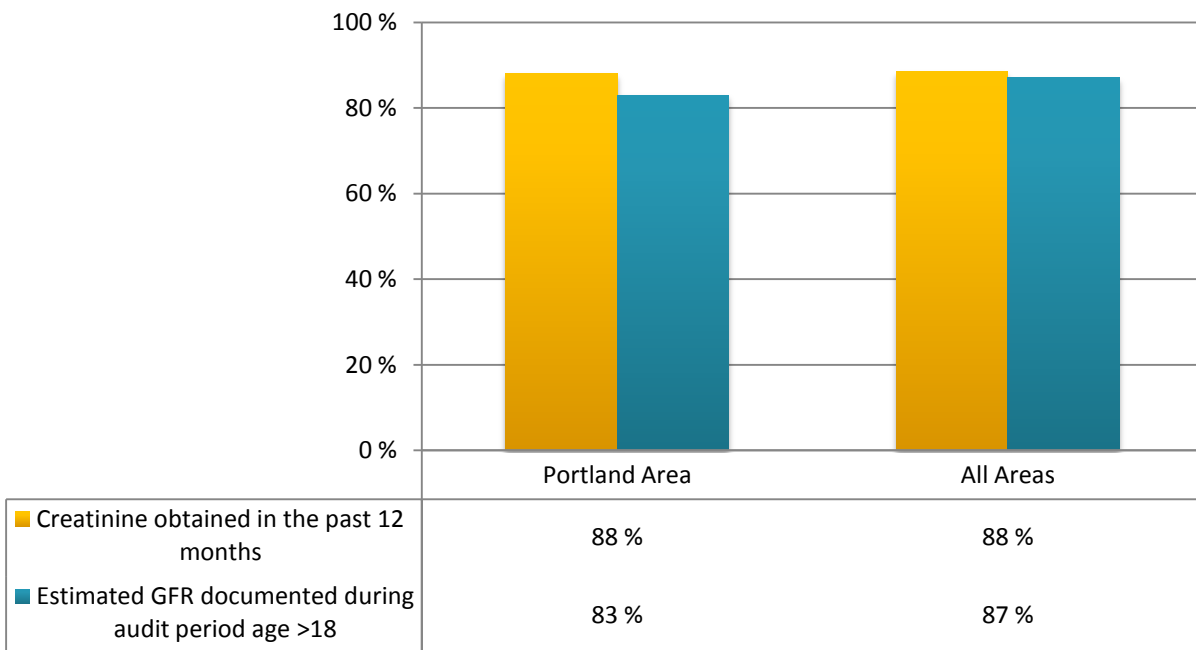
6343 sampled from 7209 active patients with diabetes (88%)

92949 sampled from 141884 active patients with diabetes (66%)

Of Patients Without Active Depression Diagnosis, Proportion Screened for Depression in Past Year



Creatinine and Estimated GFR Testing



2011 Diabetes Audit: Dates of Service Jan 1 - Dec 31, 2010

This information is for the following groups:

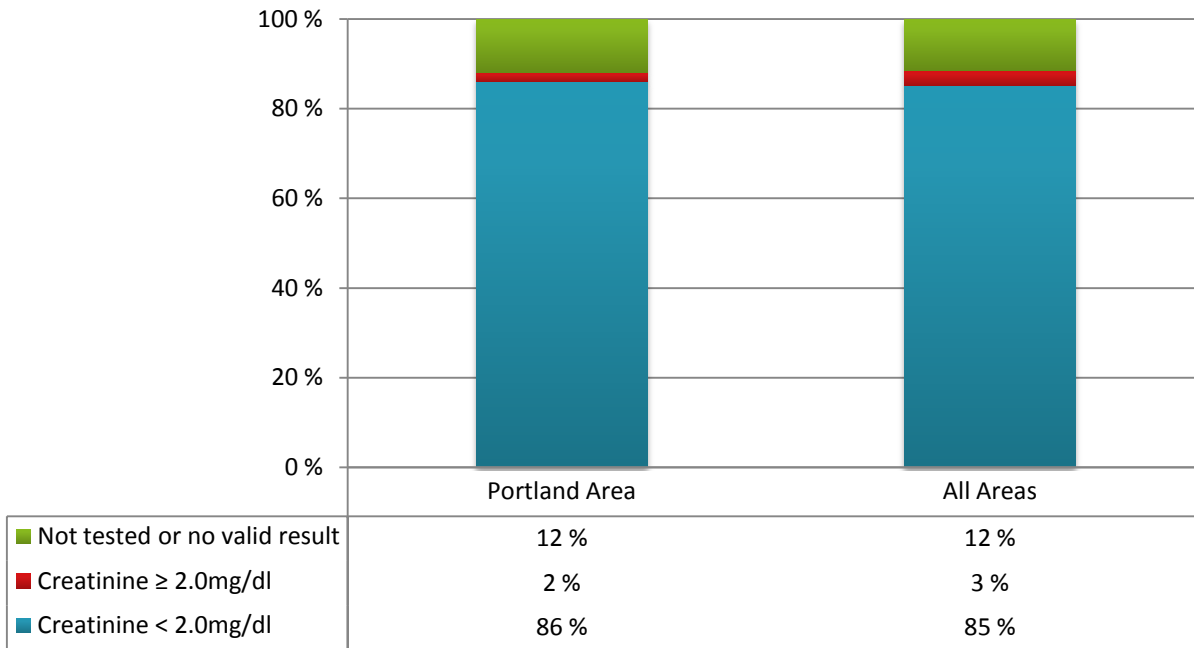
Portland Area (n=6343 patients)

All Areas (n=92949 patients)

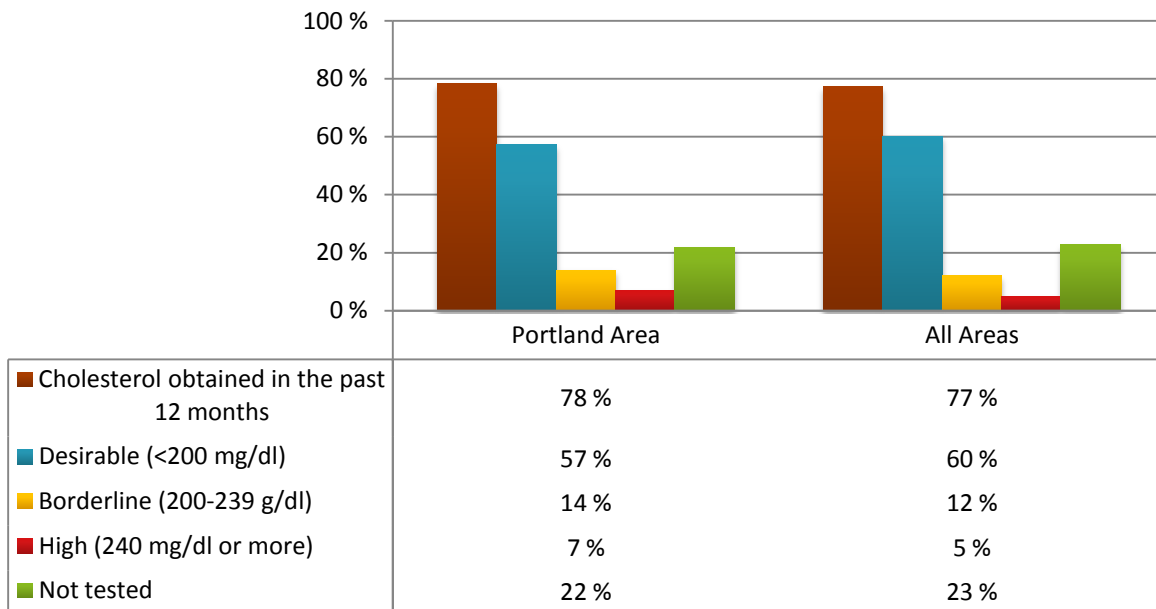
6343 sampled from 7209 active patients with diabetes (88%)

92949 sampled from 141884 active patients with diabetes (66%)

Creatinine Findings



Total Cholesterol



2011 Diabetes Audit: Dates of Service Jan 1 - Dec 31, 2010

This information is for the following groups:

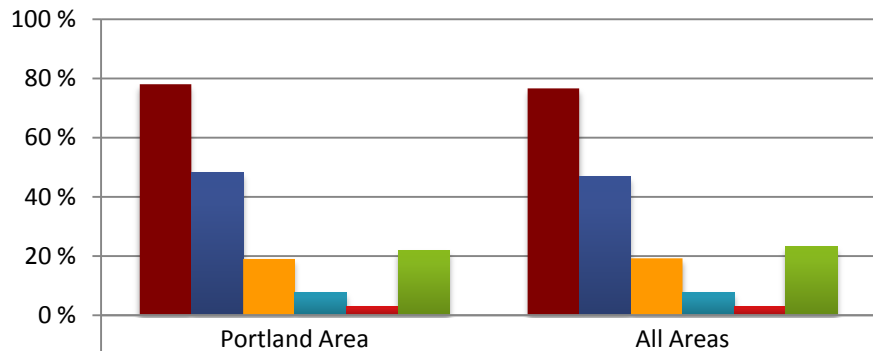
Portland Area (n=6343 patients)

All Areas (n=92949 patients)

6343 sampled from 7209 active patients with diabetes (88%)

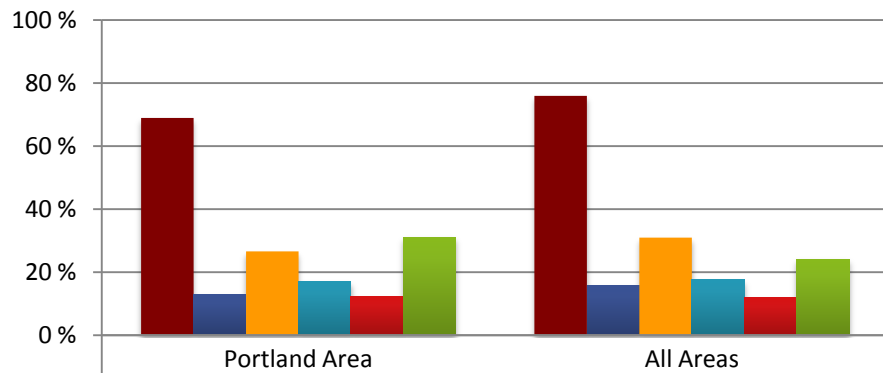
92949 sampled from 141884 active patients with diabetes (66%)

LDL Cholesterol



| | | |
|--------------------------------------|------|------|
| ■ LDL obtained in the past 12 months | 78 % | 77 % |
| ■ LDL <100 mg/dl | 48 % | 47 % |
| ■ LDL 100-129 mg/dl | 19 % | 19 % |
| ■ LDL 130-160 mg/dl | 8 % | 8 % |
| ■ LDL >160 | 3 % | 3 % |
| ■ Not tested | 22 % | 23 % |

HDL Cholesterol



| | | |
|--------------------------------------|------|------|
| ■ HDL obtained in the past 12 months | 69 % | 76 % |
| ■ HDL <35 mg/dl | 13 % | 16 % |
| ■ HDL 35-45 mg/dl | 27 % | 31 % |
| ■ HDL 46-55 mg/dl | 17 % | 18 % |
| ■ HDL >55 | 12 % | 12 % |
| ■ Not tested | 31 % | 24 % |

2011 Diabetes Audit: Dates of Service Jan 1 - Dec 31, 2010

This information is for the following groups:

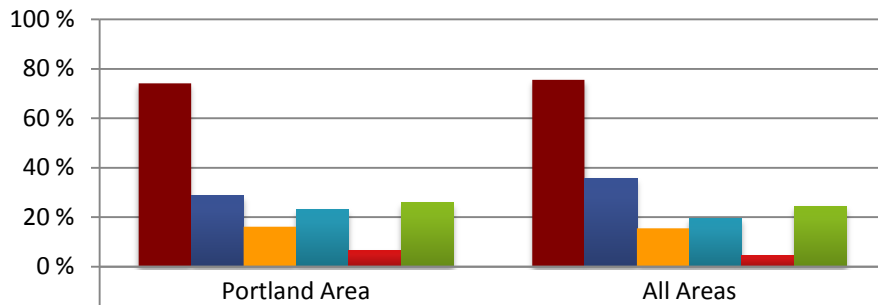
Portland Area (n=6343 patients)

All Areas (n=92949 patients)

6343 sampled from 7209 active patients with diabetes (88%)

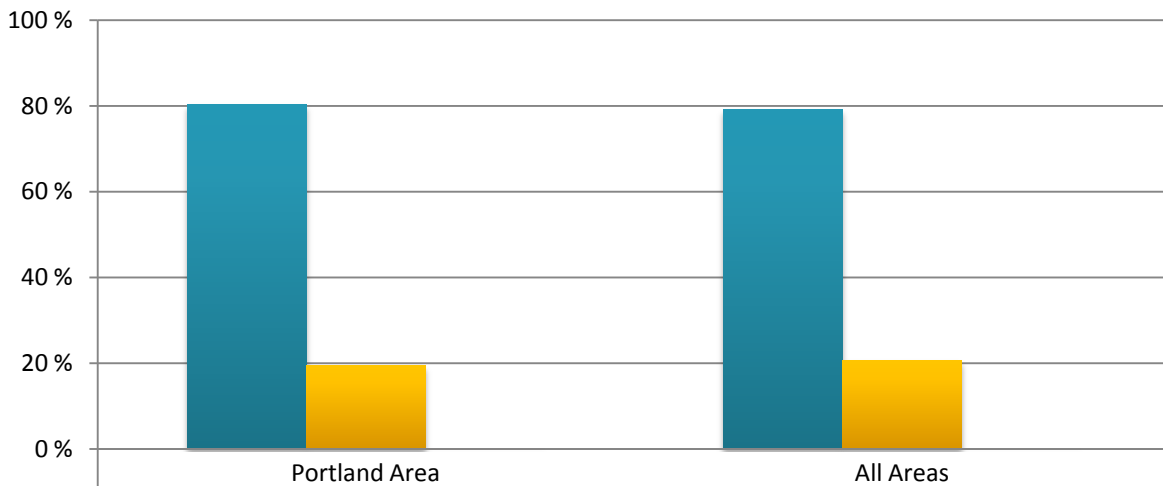
92949 sampled from 141884 active patients with diabetes (66%)

Triglyceride Distribution



| | | |
|------------------------------------------------|------|------|
| ■ Triglycerides obtained in the past 12 months | 74 % | 75 % |
| ■ TG <150 mg/dl | 29 % | 36 % |
| ■ TG 150-199 mg/dl | 16 % | 15 % |
| ■ TG 200-400 mg/dl | 23 % | 20 % |
| ■ TG >400 mg/dl | 6 % | 5 % |
| ■ Not tested | 26 % | 25 % |

Urinalysis Performed



| | | |
|-----------|------|------|
| ■ Yes | 80 % | 79 % |
| ■ No | 20 % | 21 % |
| ■ Refused | 0 % | 0 % |

2011 Diabetes Audit: Dates of Service Jan 1 - Dec 31, 2010

This information is for the following groups:

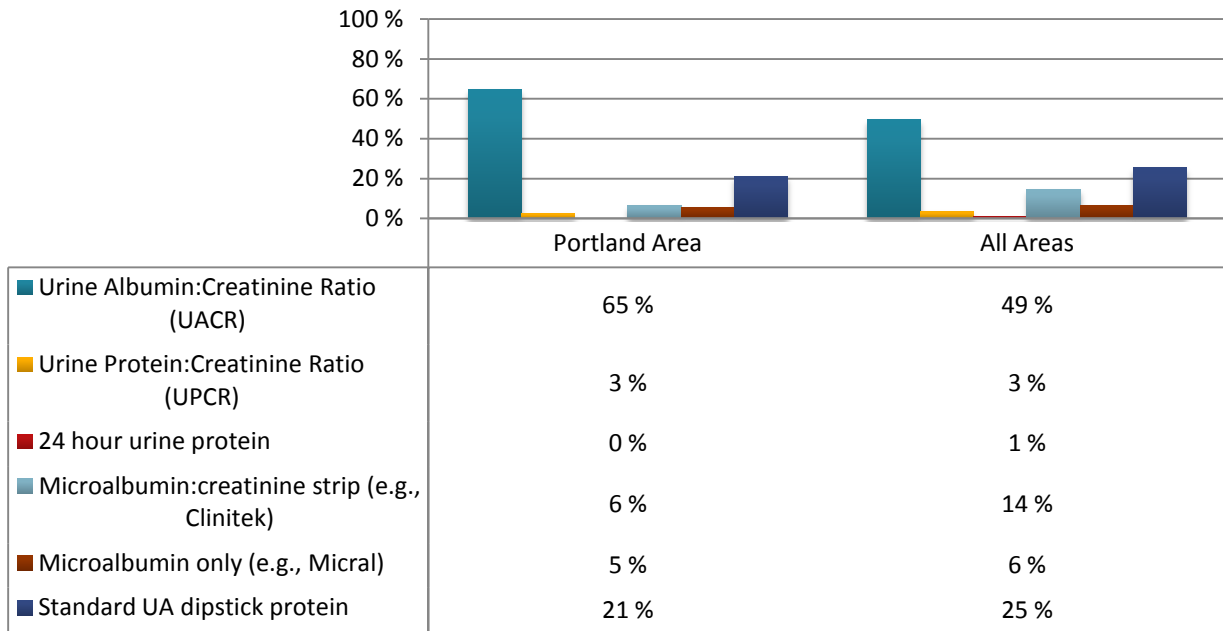
Portland Area (n=6343 patients)

All Areas (n=92949 patients)

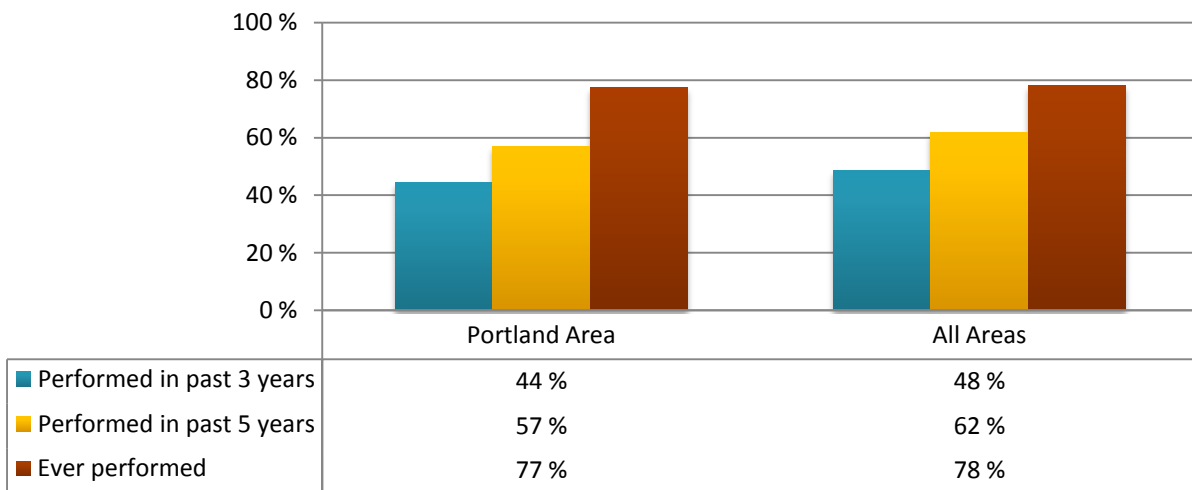
6343 sampled from 7209 active patients with diabetes (88%)

92949 sampled from 141884 active patients with diabetes (66%)

Type of Urine Protein Testing



EKG Status



2011 Diabetes Audit: Dates of Service Jan 1 - Dec 31, 2010

This information is for the following groups:

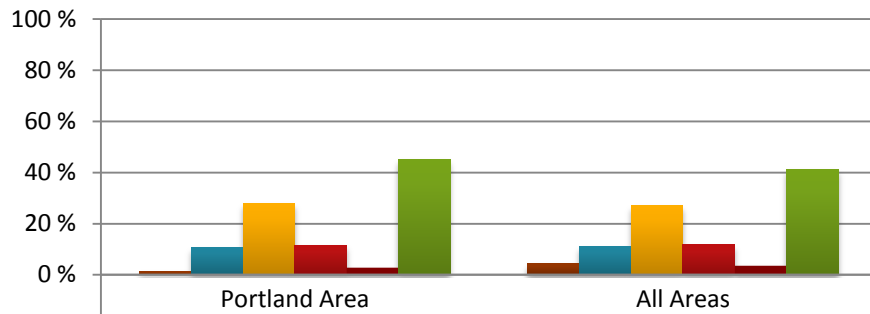
Portland Area (n=6343 patients)

All Areas (n=92949 patients)

6343 sampled from 7209 active patients with diabetes (88%)

92949 sampled from 141884 active patients with diabetes (66%)

Tuberculosis Status



| | | |
|--------------------------------------------------|------|------|
| ■ TB test +, INH treatment complete | 1 % | 4 % |
| ■ TB test +, untreated/ incomplete or tx unknown | 11 % | 11 % |
| ■ TB test -, placed after DM diagnosis | 28 % | 27 % |
| ■ TB test -, placed before DM diagnosis | 12 % | 12 % |
| ■ TB test -, date of dx or test date unknown | 3 % | 4 % |
| ■ TB test status unknown | 45 % | 41 % |