




NWTEC 2016 Survey Results




PRESENTED BY:
 NANETTE STAR YANDELL, MPH
 PROJECT DIRECTOR & EPIDEMIOLOGIST
 NYANDELL@NPAIHB.ORG


Introduction

- Survey conducted in Fall 2015
- Completed by 26 Tribes
- Purpose:
 - Feedback for EpiCenter
 - Health Priorities
 - Public Health Policies

Northwest Portland Area Indian Health Board


What is the EpiCenter doing well?

- ✓ Data reports
 - ✓ <http://www.npaihb.org/resource-lib/>
- ✓ Public health information – general
- ✓ Grants, financial assistance
- ✓ Responsive and friendly staff

Northwest Portland Area Indian Health Board


What can we improve?

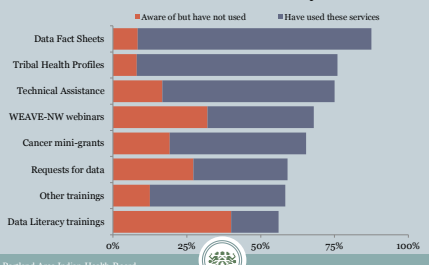
- More outreach to programs outside of administrative
- Tribal government public health policy
- Provide best practices, esp. tribally adapted & culturally appropriate
- Tribal data warehouse
- Technical Assistance for NextGen
- Better communication of what the EpiCenter does

Northwest Portland Area Indian Health Board



Epicenter Services

Data products such as fact sheets and health profiles were the most commonly used



Northwest Portland Area Indian Health Board



Top Three Health Priorities

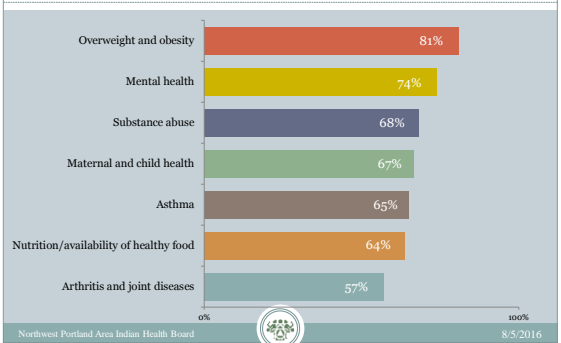
1. Overweight and obesity (10)
2. Substance Abuse (7)
3. Mental health (6)



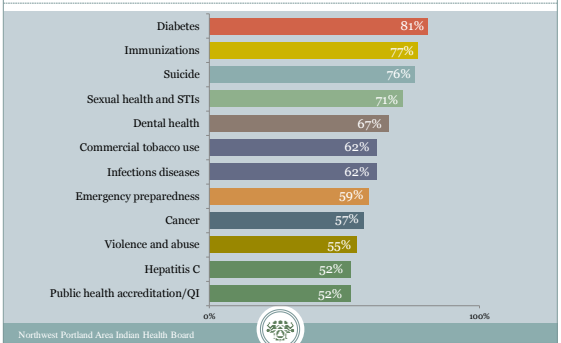
Northwest Portland Area Indian Health Board



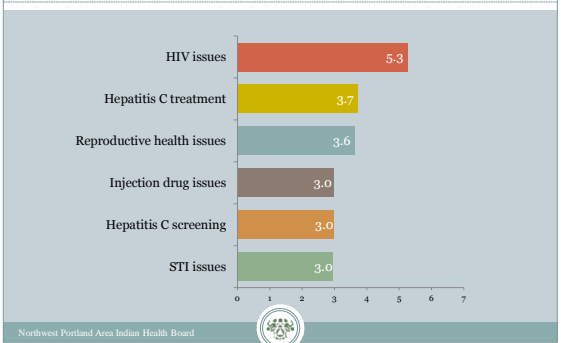
EpiCenter could do more about...



EpiCenter is doing well to address...



Top Sexual Health Priorities



Policy, Systems & Environment

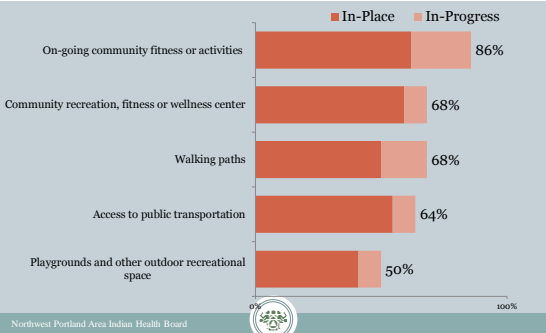
Policy passing of or change to a law, ordinance, resolution, regulation or rule designed to guide or influence behavior

System involves change made to organizational procedures

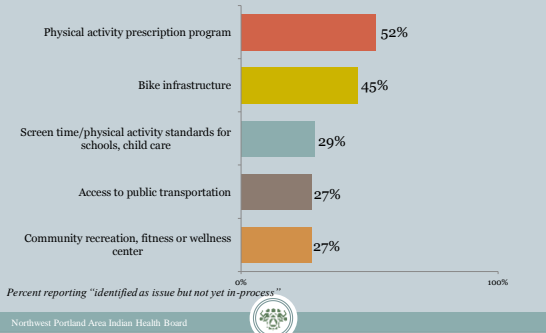
Environment change made to the physical surroundings



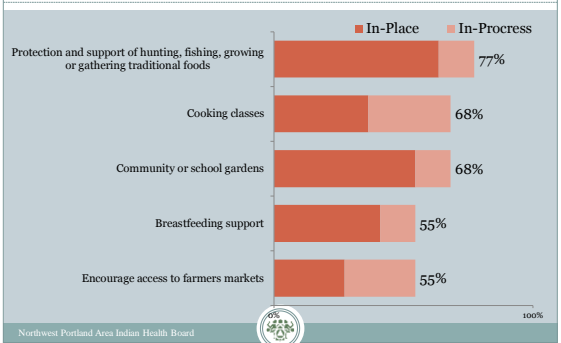
Top 5 Physical Activity PSEs



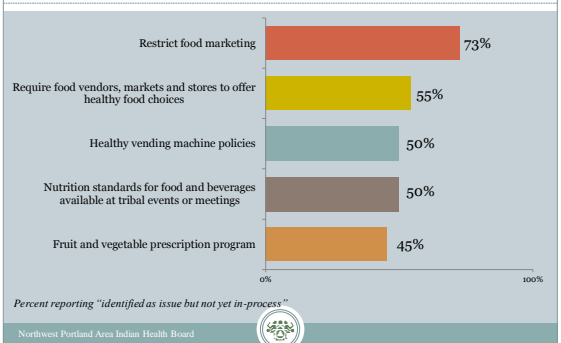
Identified Opportunities



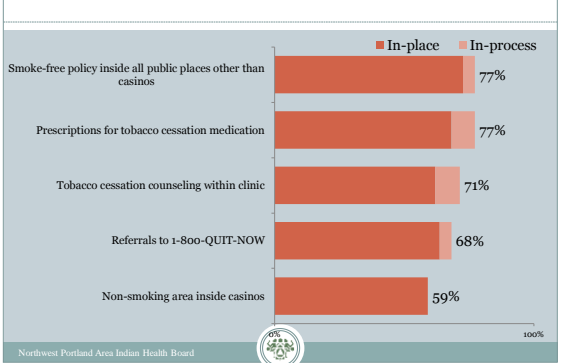
Top 5 Food & Nutrition PSEs

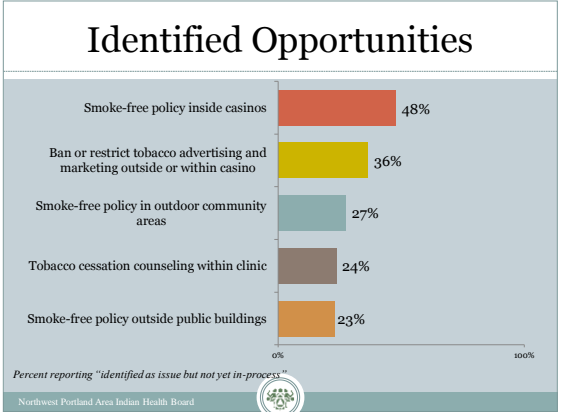


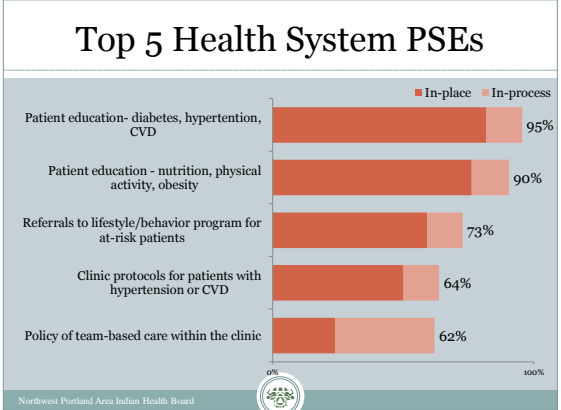
Identified Opportunities

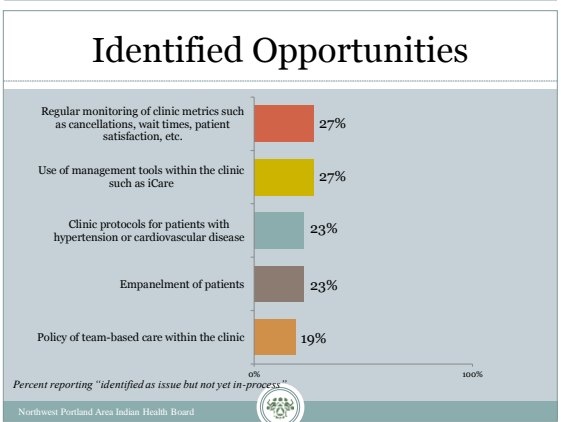



Top 5 Commercial Tobacco PSEs












**Northwest
Portland Area
Indian Health
Board**
*Indian Leadership for
Indian Health*



2121 SW Broadway, Suite 300
Portland, Oregon 97201
Phone: (503) 228-4285
Fax: (503) 228-8282

Northwest Portland Area Indian Health Board

Thank you!

Northwest Tribal Epidemiology Center
